

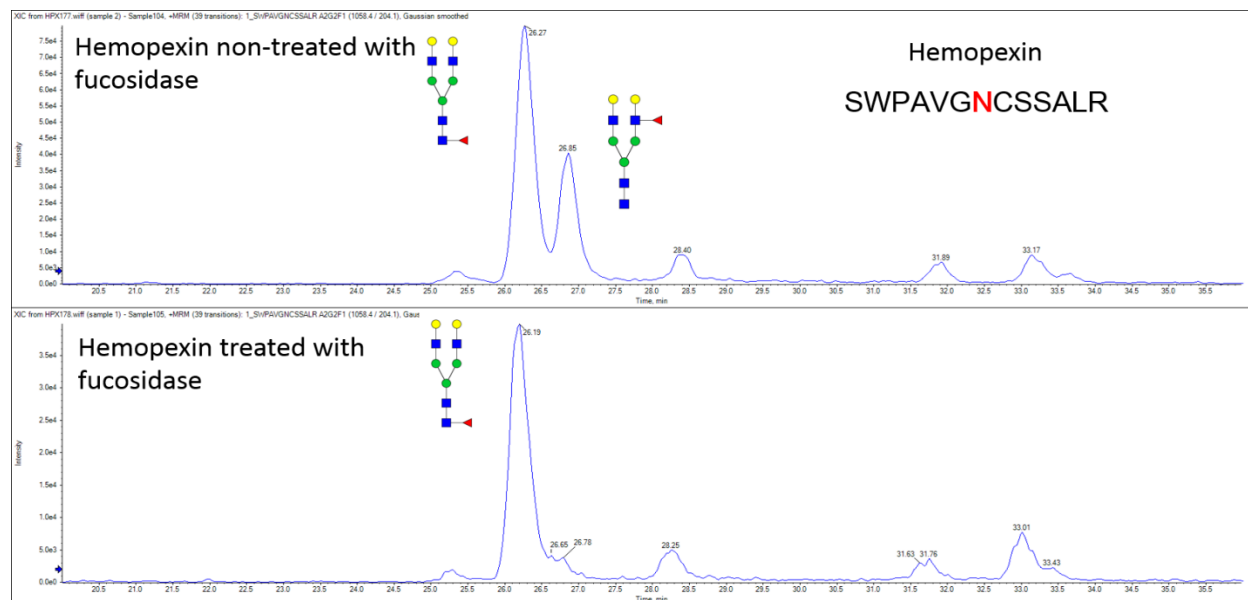
# **Analysis of site and structure specific core fucosylation in liver disease progression using exoglycosidase-assisted data-independent LC-MS/MS**

Miloslav Sanda<sup>a,d,f</sup>, Jaeil Ahn<sup>c</sup>, Petr Kozlik<sup>e</sup>, Radoslav Goldman<sup>a,b,d</sup>

a Department of Oncology, Lombardi Comprehensive Cancer Center, Georgetown University, Washington, D.C. 20057; b Department of Biochemistry and Molecular & Cellular Biology, Georgetown University, Washington, D.C., 20057; c Department of Biostatistics, Bioinformatics & Biomathematics, Georgetown University Medical Center, Washington, D.C., 20057; d Clinical and Translational Glycoscience Research Center, Georgetown University, Washington, D.C., 20057; e Department of Analytical Chemistry, Faculty of Science, Charles University, Prague, Czech Republic; f Corresponding author email: ms2465@georgetown.edu; tel: +1 202-6876279

**Supplemental Figure 1:** HILIC chromatography of the glycopeptide of hemopexin treated with fucosidase confirms cleavage of the outer-arm fucose with > 98% efficiency

**Supplemental Table 1:** Summary of DIA results of selected fucosylated glycopeptides in liver disease



**Supplemental Figure 1:** HILIC chromatography of the glycopeptide of hemopexin treated with fucosidase confirms cleavage of the outer-arm fucose with > 98% efficiency