

**Supplementary Data 1. Alignment of full-length L protein sequences of Old World and
New World arenaviruses**

**Conformational changes in Lassa virus L protein associated with promoter binding
and RNA synthesis activity**

**Tomas Kouba¹, Dominik Vogel², Sigurdur R. Thorkelsson³, Emmanuelle R. J. Quemin³,
Harry M. Williams², Morlin Milewski², Carola Busch², Stephan Günther², Kay
Grünewald³, Maria Rosenthal^{2,*} and Stephen Cusack^{1,*}**

1- European Molecular Biology Laboratory, Grenoble, France

2- Bernhard Nocht Institute for Tropical Medicine, Hamburg, Germany

3- Centre for Structural Systems Biology, Leibniz Institute for Experimental Virology,
University of Hamburg, Hamburg, Germany

These authors contributed equally: Tomas Kouba, Dominik Vogel, Sigurdur R. Thorkelsson

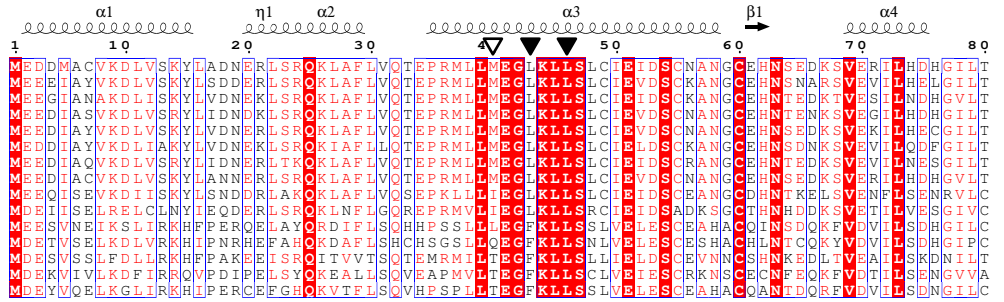
These authors jointly supervised this work: Maria Rosenthal and Stephen Cusack

* To whom correspondence should be addressed: rosenthal@bnitm.de and cusack@embl.fr

Endonuclease

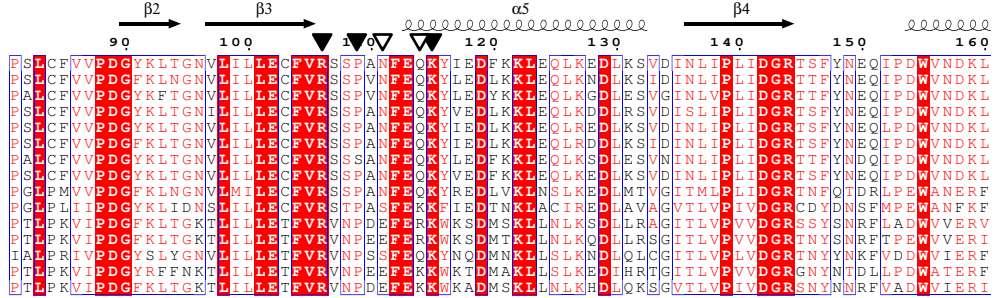
LASV_Bantou-289(lin4)_AZI95808

LASV_Bantou-289(lin4)_AZI95808
 LASV_Pinneo-NIG-1969(lin1)_AIT17835
 LASV_Nig08-04(lin2)_ADU56613
 LASV_Nig08-A18(lin3)_ADU56617
 LASV_AV(lin5)_AO59509
 LASV_KAK-428(lin6)_ANH09760
 LASV_BEN/2016/3488(lin7)_QNC69562
 LASV_G3278-SLE-2013_AIT17397
 MOVV_Acar_YP_516229
 LCMV_Armstrongr_ASD49942
 JUNV_XJ13_ACO52427
 TACV_NP_694848
 OLVV_3229_YP_001649214
 GTOV_S-26764_ALE15099
 MACV_Carvalho_AIG51560



LASV_Bantou-289(lin4)_AZI95808

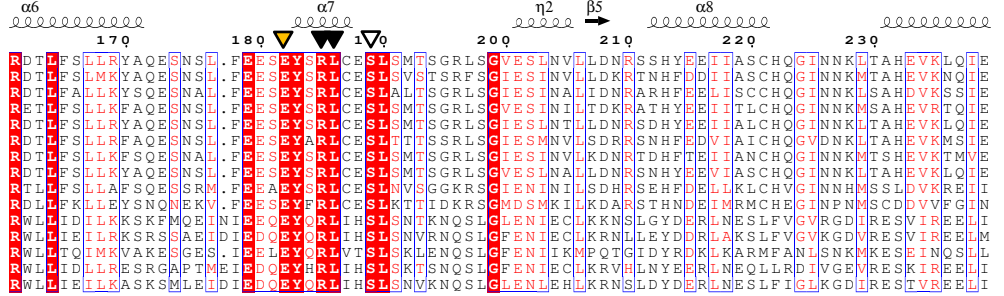
LASV_Bantou-289(lin4)_AZI95808
 LASV_Pinneo-NIG-1969(lin1)_AIT17835
 LASV_Nig08-04(lin2)_ADU56613
 LASV_Nig08-A18(lin3)_ADU56617
 LASV_AV(lin5)_AO59509
 LASV_KAK-428(lin6)_ANH09760
 LASV_BEN/2016/3488(lin7)_QNC69562
 LASV_G3278-SLE-2013_AIT17397
 MOVV_Acar_YP_516229
 LCMV_Armstrongr_ASD49942
 JUNV_XJ13_ACO52427
 TACV_NP_694848
 OLVV_3229_YP_001649214
 GTOV_S-26764_ALE15099
 MACV_Carvalho_AIG51560



Linker

LASV_Bantou-289(lin4)_AZI95808

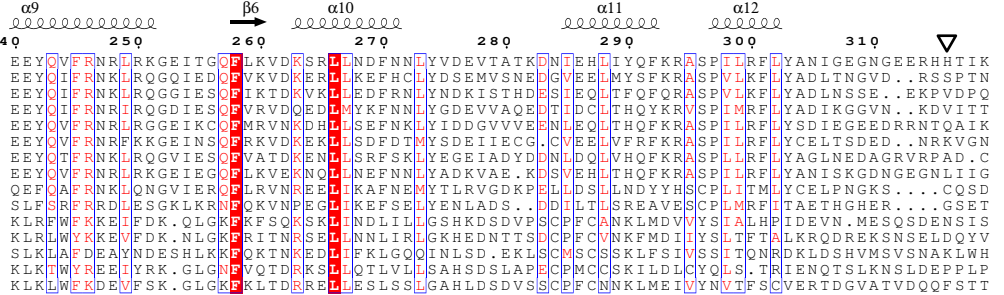
LASV_Bantou-289(lin4)_AZI95808
 LASV_Pinneo-NIG-1969(lin1)_AIT17835
 LASV_Nig08-04(lin2)_ADU56613
 LASV_Nig08-A18(lin3)_ADU56617
 LASV_AV(lin5)_AO59509
 LASV_KAK-428(lin6)_ANH09760
 LASV_BEN/2016/3488(lin7)_QNC69562
 LASV_G3278-SLE-2013_AIT17397
 MOVV_Acar_YP_516229
 LCMV_Armstrongr_ASD49942
 JUNV_XJ13_ACO52427
 TACV_NP_694848
 OLVV_3229_YP_001649214
 GTOV_S-26764_ALE15099
 MACV_Carvalho_AIG51560



Pyramid base

LASV_Bantou-289(lin4)_AZI95808

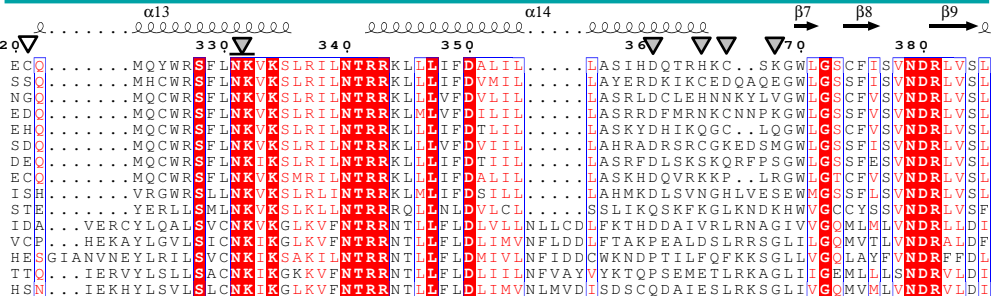
LASV_Bantou-289(lin4)_AZI95808
 LASV_Pinneo-NIG-1969(lin1)_AIT17835
 LASV_Nig08-04(lin2)_ADU56613
 LASV_Nig08-A18(lin3)_ADU56617
 LASV_AV(lin5)_AO59509
 LASV_KAK-428(lin6)_ANH09760
 LASV_BEN/2016/3488(lin7)_QNC69562
 LASV_G3278-SLE-2013_AIT17397
 MOVV_Acar_YP_516229
 LCMV_Armstrongr_ASD49942
 JUNV_XJ13_ACO52427
 TACV_NP_694848
 OLVV_3229_YP_001649214
 GTOV_S-26764_ALE15099
 MACV_Carvalho_AIG51560



Pyramid

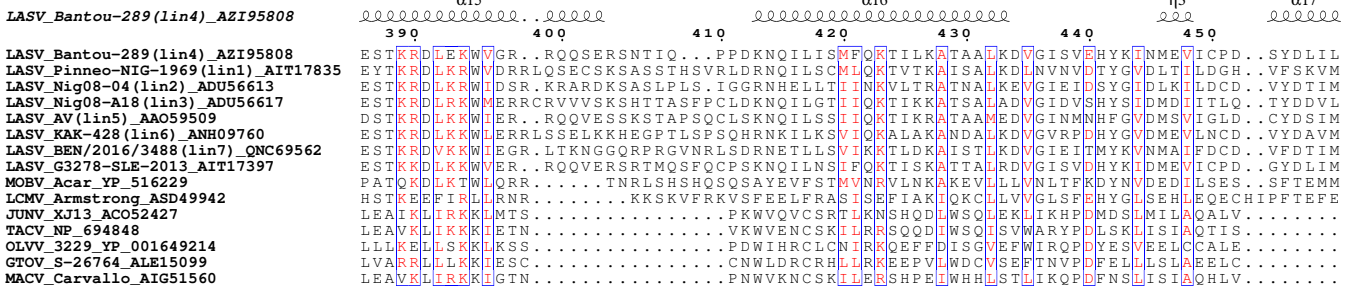
LASV_Bantou-289(lin4)_AZI95808

LASV_Bantou-289(lin4)_AZI95808
 LASV_Pinneo-NIG-1969(lin1)_AIT17835
 LASV_Nig08-04(lin2)_ADU56613
 LASV_Nig08-A18(lin3)_ADU56617
 LASV_AV(lin5)_AO59509
 LASV_KAK-428(lin6)_ANH09760
 LASV_BEN/2016/3488(lin7)_QNC69562
 LASV_G3278-SLE-2013_AIT17397
 MOVV_Acar_YP_516229
 LCMV_Armstrongr_ASD49942
 JUNV_XJ13_ACO52427
 TACV_NP_694848
 OLVV_3229_YP_001649214
 GTOV_S-26764_ALE15099
 MACV_Carvalho_AIG51560

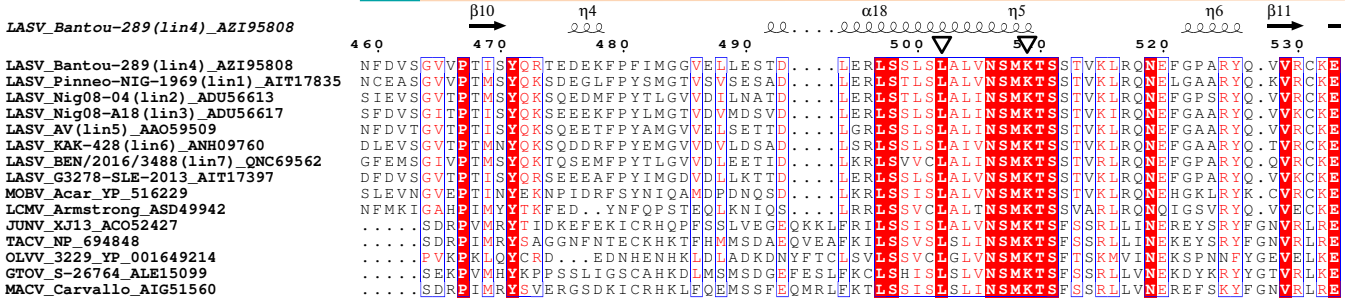


- ▼ – general defect in L protein activity upon mutation observed in Lassa virus mini-replicon system
- ▽ – selective transcriptional defect of L protein upon mutation observed in Lassa virus mini-replicon system
- ▽ – no or weak effect on L protein activity upon mutation observed in Lassa virus mini-replicon system
- ▽ – intermediate effect on L protein activity upon mutation observed in Lassa virus mini-replicon system

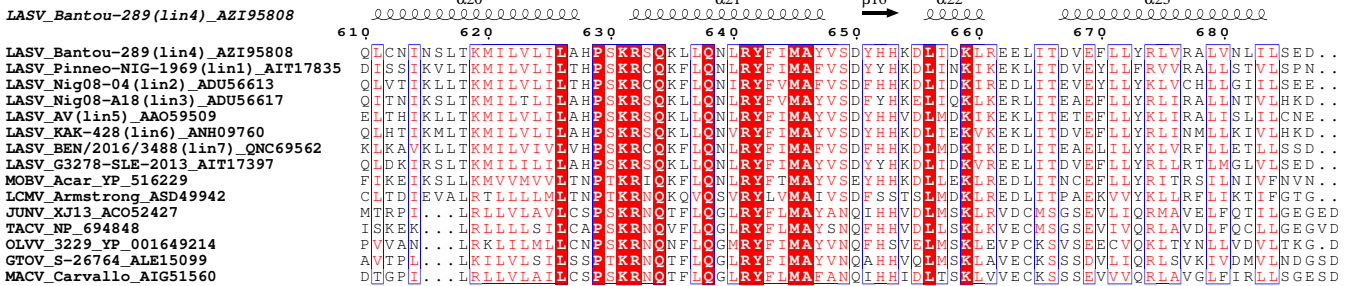
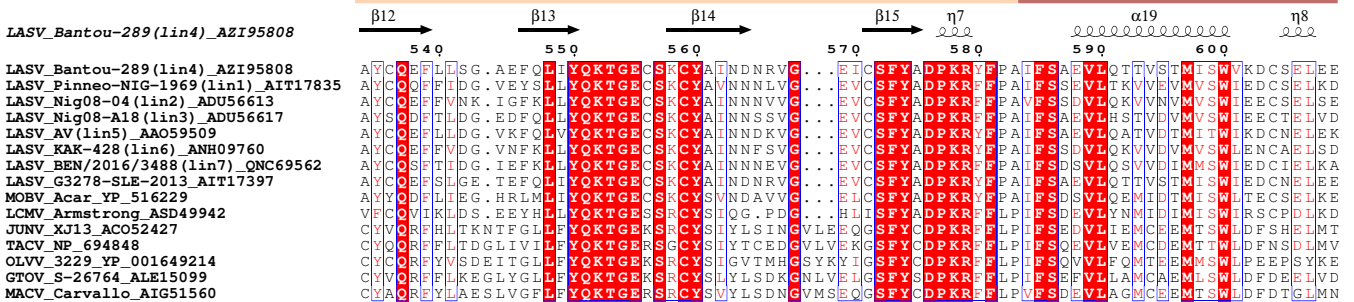
Pyramid



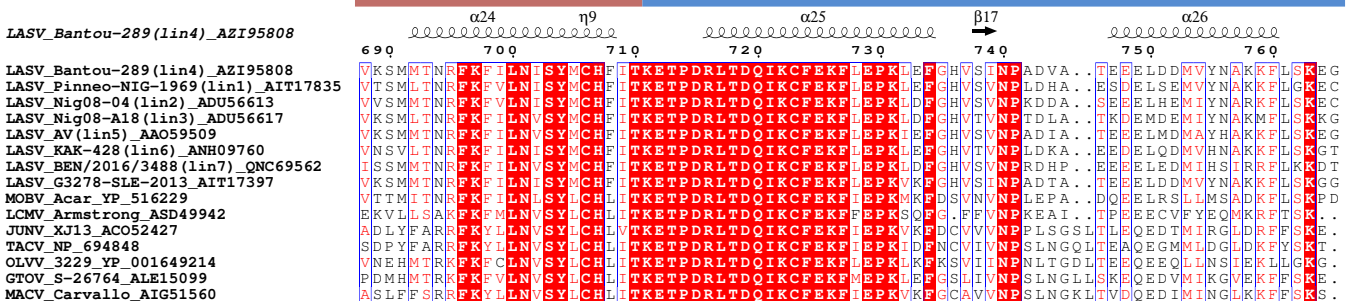
Pyramid base



Helical region



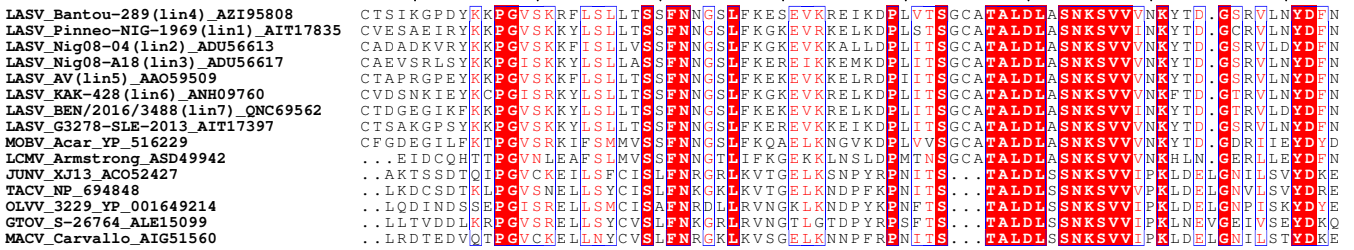
Fingers (G)



- ▼ – general defect in L protein activity upon mutation observed in Lassa virus mini-replicon system
- ▽ – selective transcriptional defect of L protein upon mutation observed in Lassa virus mini-replicon system
- ▽ – no or weak effect on L protein activity upon mutation observed in Lassa virus mini-replicon system

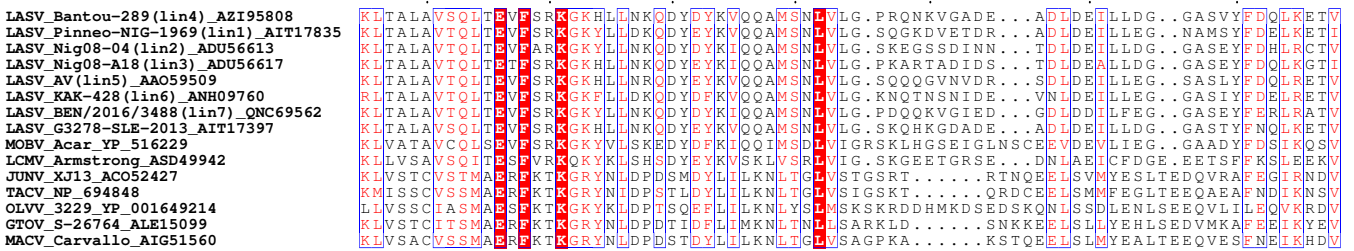
Fingers

LASV_Bantou-289 (lin4) AZI95808



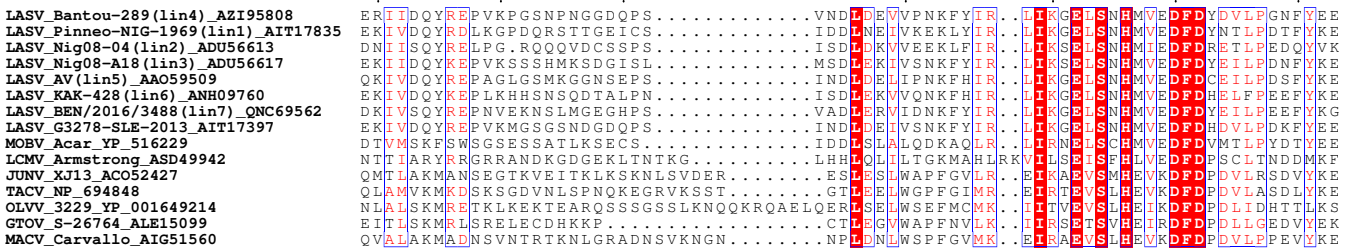
α -bundle

LASV_Bantou-289 (lin4) AZI95808



Pendant

LASV_Bantou-289 (lin4) AZI95808



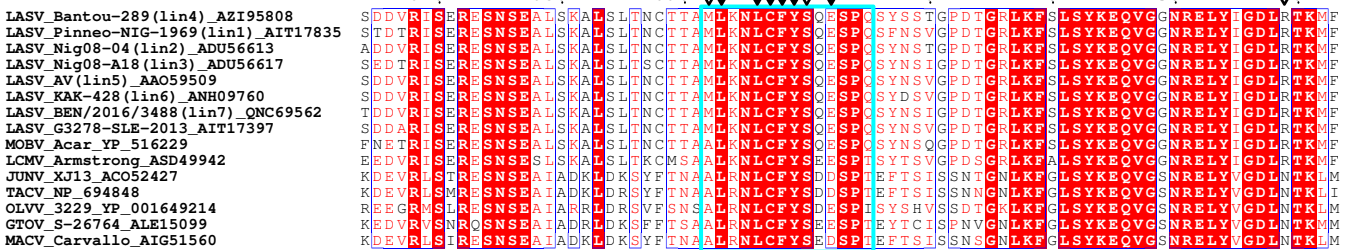
Pendant

LASV_Bantou-289 (lin4) AZI95808



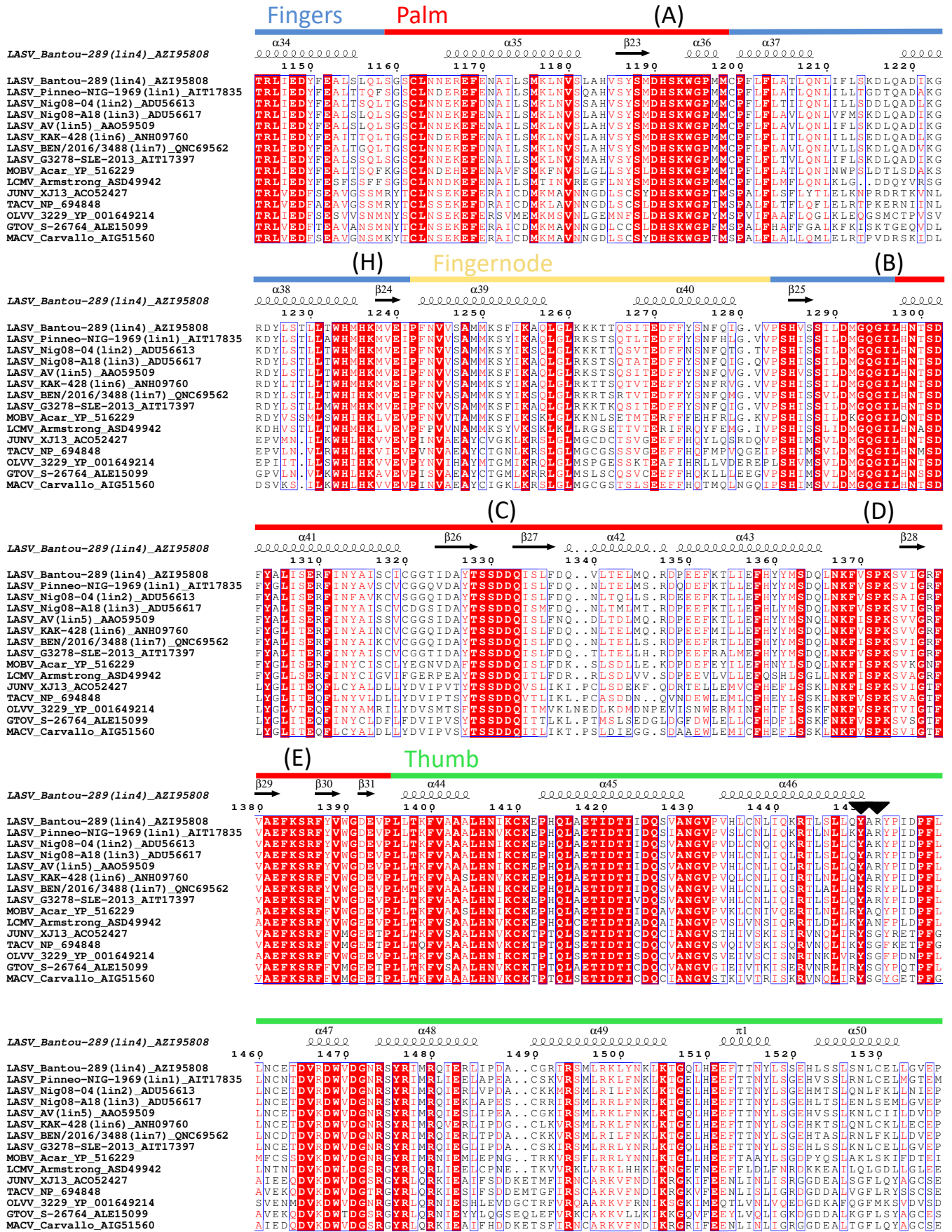
Fingertips (F)

LASV_Bantou-289 (lin4) AZI95808



'Inhibitory peptide'
1092-1105

- ▼ – general defect in L protein activity upon mutation observed in Lassa virus mini-replicon system
- ▽ – selective transcriptional defect of L protein upon mutation observed in Lassa virus mini-replicon system
- ∇ – no or weak effect on L protein activity upon mutation observed in Lassa virus mini-replicon system



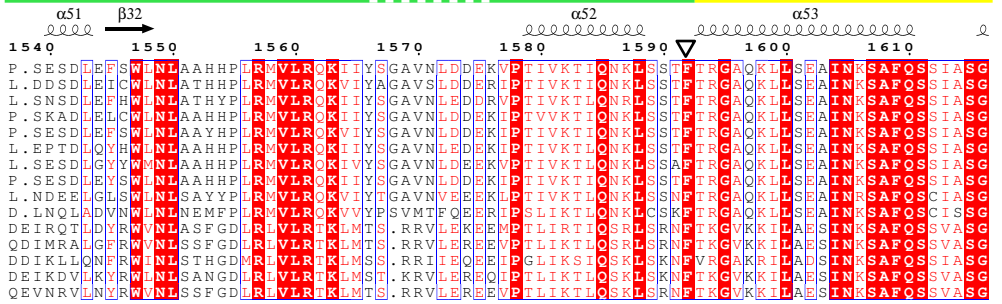
- ▼ – general defect in L protein activity upon mutation observed in Lassa virus mini-replicon system
- ▽ – selective transcriptional defect of L protein upon mutation observed in Lassa virus mini-replicon system
- ∇ – no or weak effect on L protein activity upon mutation observed in Lassa virus mini-replicon system

Thumb

Thumb-ring

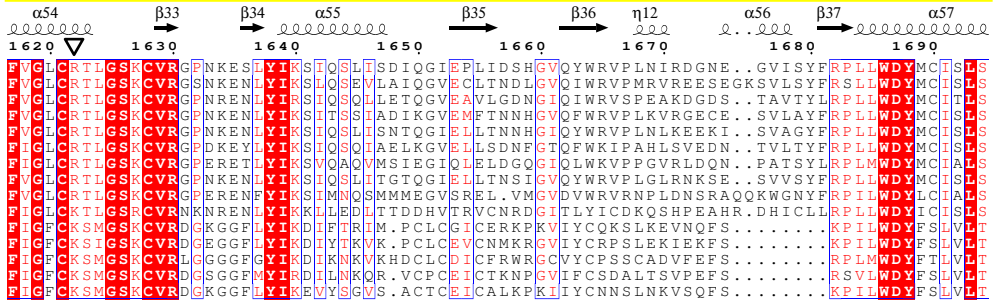
LASV_Bantou-289(lin4)_AZI95808

LASV_Bantou-289(lin4)_AZI95808
 LASV_Pinneo-NIG-1969(lin1)_AIT17835
 LASV_Nig08-04(lin2)_ADU56613
 LASV_Nig08-A18(lin3)_ADU56617
 LASV_AV(lin5)_AO59509
 LASV_KAK-428(lin6)_ANH09760
 LASV_BEN/2016/3488(lin7)_QNC69562
 LASV_G3278-SLE-2013_AIT17397
 MOVV_Acar_YP_516229
 LCMV_Armstrong_ASD49942
 JUNV_XJ13_ACO52427
 TACV_NP_694848
 OLVV_3229_YP_001649214
 GTOV_S-26764_ALE15099
 MACV_Carvalho_AIG51560



LASV_Bantou-289(lin4)_AZI95808

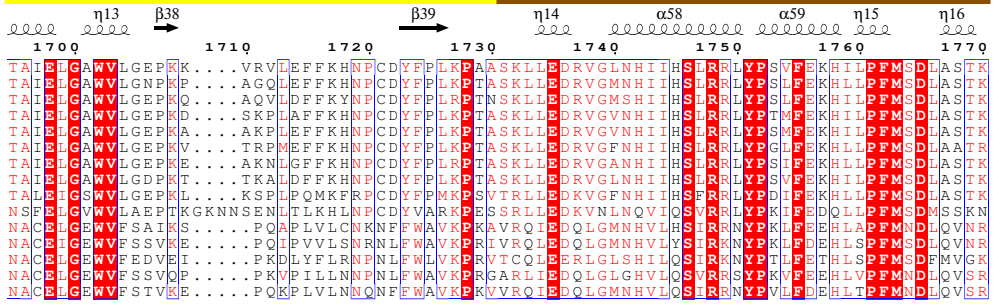
LASV_Bantou-289(lin4)_AZI95808
 LASV_Pinneo-NIG-1969(lin1)_AIT17835
 LASV_Nig08-04(lin2)_ADU56613
 LASV_Nig08-A18(lin3)_ADU56617
 LASV_AV(lin5)_AO59509
 LASV_KAK-428(lin6)_ANH09760
 LASV_BEN/2016/3488(lin7)_QNC69562
 LASV_G3278-SLE-2013_AIT17397
 MOVV_Acar_YP_516229
 LCMV_Armstrong_ASD49942
 JUNV_XJ13_ACO52427
 TACV_NP_694848
 OLVV_3229_YP_001649214
 GTOV_S-26764_ALE15099
 MACV_Carvalho_AIG51560



Lid

LASV_Bantou-289(lin4)_AZI95808

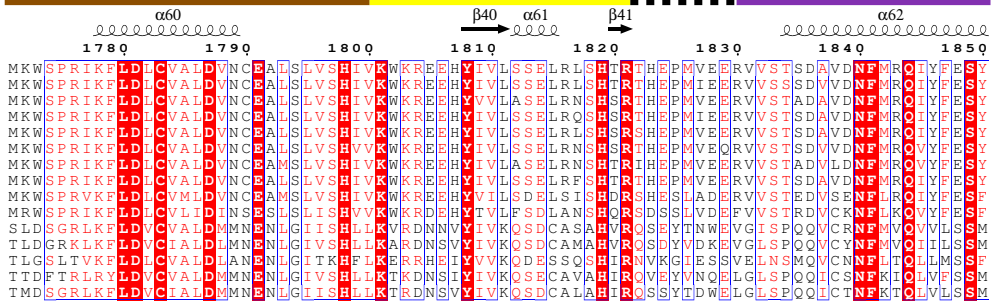
LASV_Bantou-289(lin4)_AZI95808
 LASV_Pinneo-NIG-1969(lin1)_AIT17835
 LASV_Nig08-04(lin2)_ADU56613
 LASV_Nig08-A18(lin3)_ADU56617
 LASV_AV(lin5)_AO59509
 LASV_KAK-428(lin6)_ANH09760
 LASV_BEN/2016/3488(lin7)_QNC69562
 LASV_G3278-SLE-2013_AIT17397
 MOVV_Acar_YP_516229
 LCMV_Armstrong_ASD49942
 JUNV_XJ13_ACO52427
 TACV_NP_694848
 OLVV_3229_YP_001649214
 GTOV_S-26764_ALE15099
 MACV_Carvalho_AIG51560



Mid

LASV_Bantou-289(lin4)_AZI95808

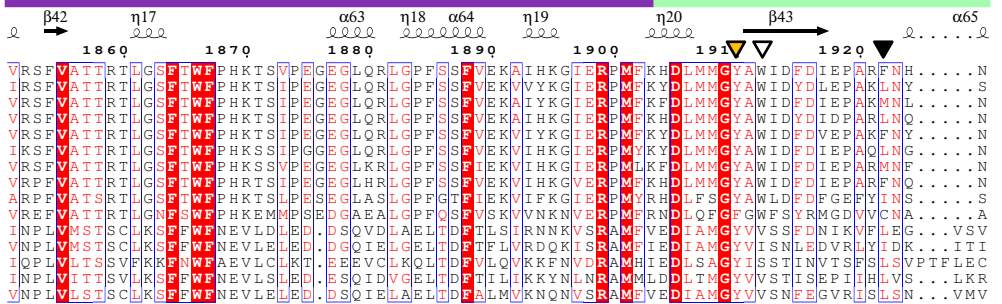
LASV_Bantou-289(lin4)_AZI95808
 LASV_Pinneo-NIG-1969(lin1)_AIT17835
 LASV_Nig08-04(lin2)_ADU56613
 LASV_Nig08-A18(lin3)_ADU56617
 LASV_AV(lin5)_AO59509
 LASV_KAK-428(lin6)_ANH09760
 LASV_BEN/2016/3488(lin7)_QNC69562
 LASV_G3278-SLE-2013_AIT17397
 MOVV_Acar_YP_516229
 LCMV_Armstrong_ASD49942
 JUNV_XJ13_ACO52427
 TACV_NP_694848
 OLVV_3229_YP_001649214
 GTOV_S-26764_ALE15099
 MACV_Carvalho_AIG51560



CBD-like

LASV_Bantou-289(lin4)_AZI95808

LASV_Bantou-289(lin4)_AZI95808
 LASV_Pinneo-NIG-1969(lin1)_AIT17835
 LASV_Nig08-04(lin2)_ADU56613
 LASV_Nig08-A18(lin3)_ADU56617
 LASV_AV(lin5)_AO59509
 LASV_KAK-428(lin6)_ANH09760
 LASV_BEN/2016/3488(lin7)_QNC69562
 LASV_G3278-SLE-2013_AIT17397
 MOVV_Acar_YP_516229
 LCMV_Armstrong_ASD49942
 JUNV_XJ13_ACO52427
 TACV_NP_694848
 OLVV_3229_YP_001649214
 GTOV_S-26764_ALE15099
 MACV_Carvalho_AIG51560

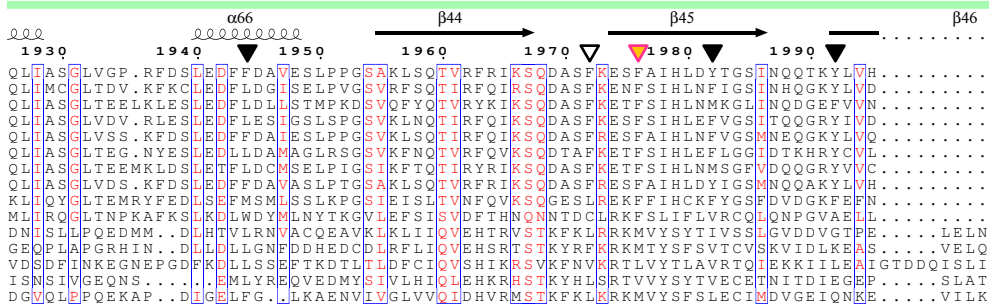


- ▼ – general defect in L protein activity upon mutation observed in Lassa virus mini-replicon system
- ▽ – selective transcriptional defect of L protein upon mutation observed in Lassa virus mini-replicon system
- ▽ – no or weak effect on L protein activity upon mutation observed in Lassa virus mini-replicon system

CBD-like

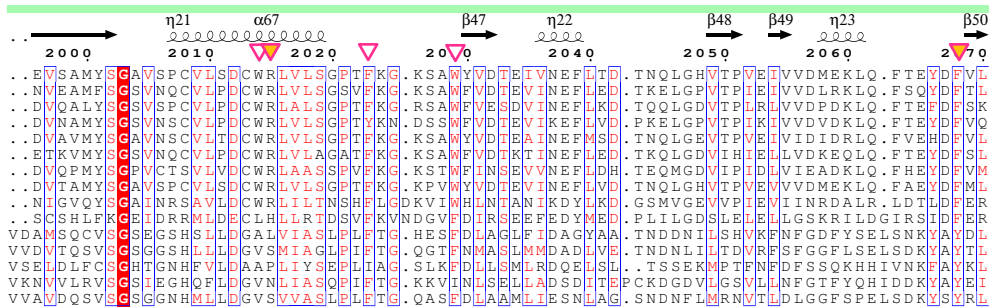
LASV_Bantou-289 (lin4) AZI95808

LASV_Bantou-289 (lin4) AZI95808
 LASV_Pinneo-NIG-1969 (lin1) AIT17835
 LASV_Nig08-04 (lin2) ADU56613
 LASV_Nig08-A18 (lin3) ADU56617
 LASV_AV (lin5) AAO59509
 LASV_KAK-428 (lin6) ANH09760
 LASV_BEN/2016/3488 (lin7) QNC69562
 LASV_G3278-SLE-2013 AIT17397
 MOBV_Acar_YP_516229
 LCMV_Armstrong_ASD49942
 JUNV_XJ13_ACO52427
 TACV_NP_694848
 OLVV_3229_YP_001649214
 GTOV_S-26764_ALE15099
 MACV_Carvalho_AIG51560



LASV_Bantou-289 (lin4) AZI95808

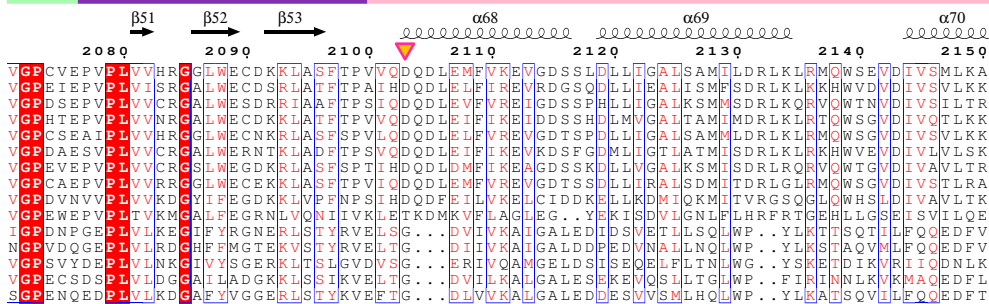
LASV_Bantou-289 (lin4) AZI95808
 LASV_Pinneo-NIG-1969 (lin1) AIT17835
 LASV_Nig08-04 (lin2) ADU56613
 LASV_Nig08-A18 (lin3) ADU56617
 LASV_AV (lin5) AAO59509
 LASV_KAK-428 (lin6) ANH09760
 LASV_BEN/2016/3488 (lin7) QNC69562
 LASV_G3278-SLE-2013 AIT17397
 MOBV_Acar_YP_516229
 LCMV_Armstrong_ASD49942
 JUNV_XJ13_ACO52427
 TACV_NP_694848
 OLVV_3229_YP_001649214
 GTOV_S-26764_ALE15099
 MACV_Carvalho_AIG51560



Link 627-like

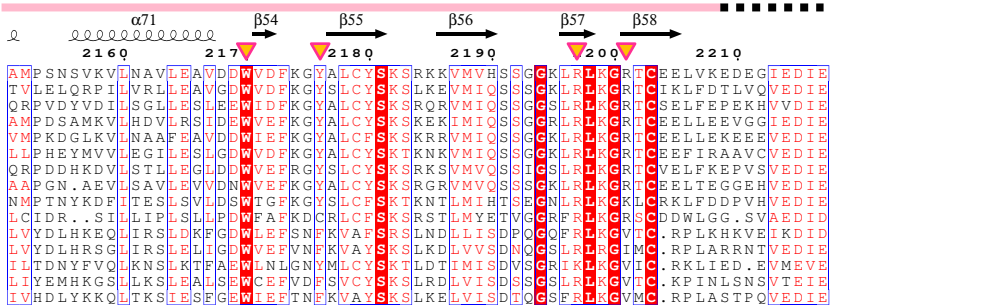
LASV_Bantou-289 (lin4) AZI95808

LASV_Bantou-289 (lin4) AZI95808
 LASV_Pinneo-NIG-1969 (lin1) AIT17835
 LASV_Nig08-04 (lin2) ADU56613
 LASV_Nig08-A18 (lin3) ADU56617
 LASV_AV (lin5) AAO59509
 LASV_KAK-428 (lin6) ANH09760
 LASV_BEN/2016/3488 (lin7) QNC69562
 LASV_G3278-SLE-2013 AIT17397
 MOBV_Acar_YP_516229
 LCMV_Armstrong_ASD49942
 JUNV_XJ13_ACO52427
 TACV_NP_694848
 OLVV_3229_YP_001649214
 GTOV_S-26764_ALE15099
 MACV_Carvalho_AIG51560



LASV_Bantou-289 (lin4) AZI95808

LASV_Bantou-289 (lin4) AZI95808
 LASV_Pinneo-NIG-1969 (lin1) AIT17835
 LASV_Nig08-04 (lin2) ADU56613
 LASV_Nig08-A18 (lin3) ADU56617
 LASV_AV (lin5) AAO59509
 LASV_KAK-428 (lin6) ANH09760
 LASV_BEN/2016/3488 (lin7) QNC69562
 LASV_G3278-SLE-2013 AIT17397
 MOBV_Acar_YP_516229
 LCMV_Armstrong_ASD49942
 JUNV_XJ13_ACO52427
 TACV_NP_694848
 OLVV_3229_YP_001649214
 GTOV_S-26764_ALE15099
 MACV_Carvalho_AIG51560



- ▼ – selective transcriptional defect of L protein upon mutation observed in Lassa virus mini-replicon system (Lehmann et al. 2014)
- ▽ – no or weak effect on L protein activity upon mutation observed in Lassa virus mini-replicon system (Lehmann et al. 2014)
- ▼ – general defect in L protein activity upon mutation observed in Lassa virus mini-replicon system
- ▼ – selective transcriptional defect of L protein upon mutation observed in Lassa virus mini-replicon system
- ▽ – no or weak effect on L protein activity upon mutation observed in Lassa virus mini-replicon system
- ▼ – intermediate effect on L protein activity upon mutation observed in Lassa virus mini-replicon system