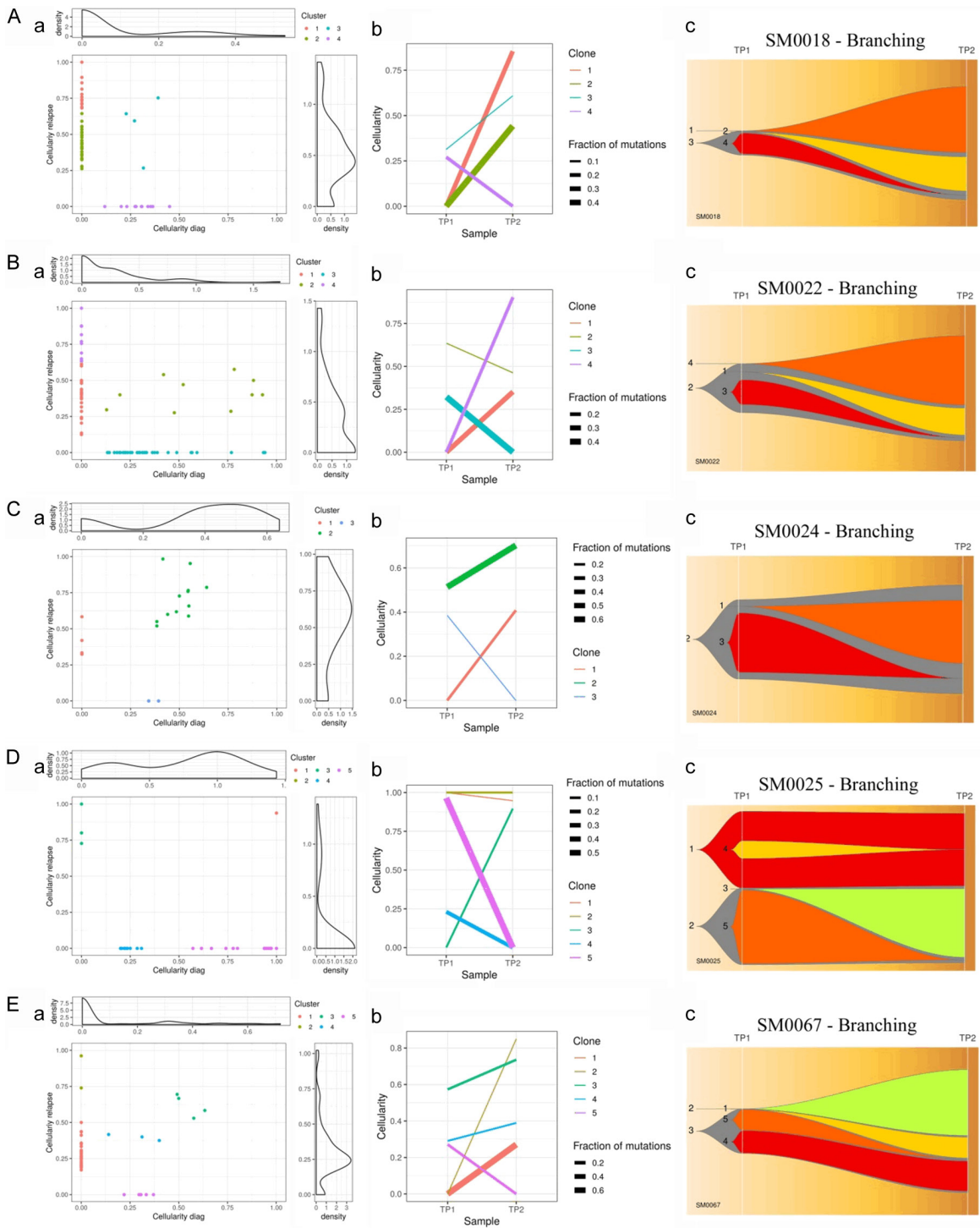
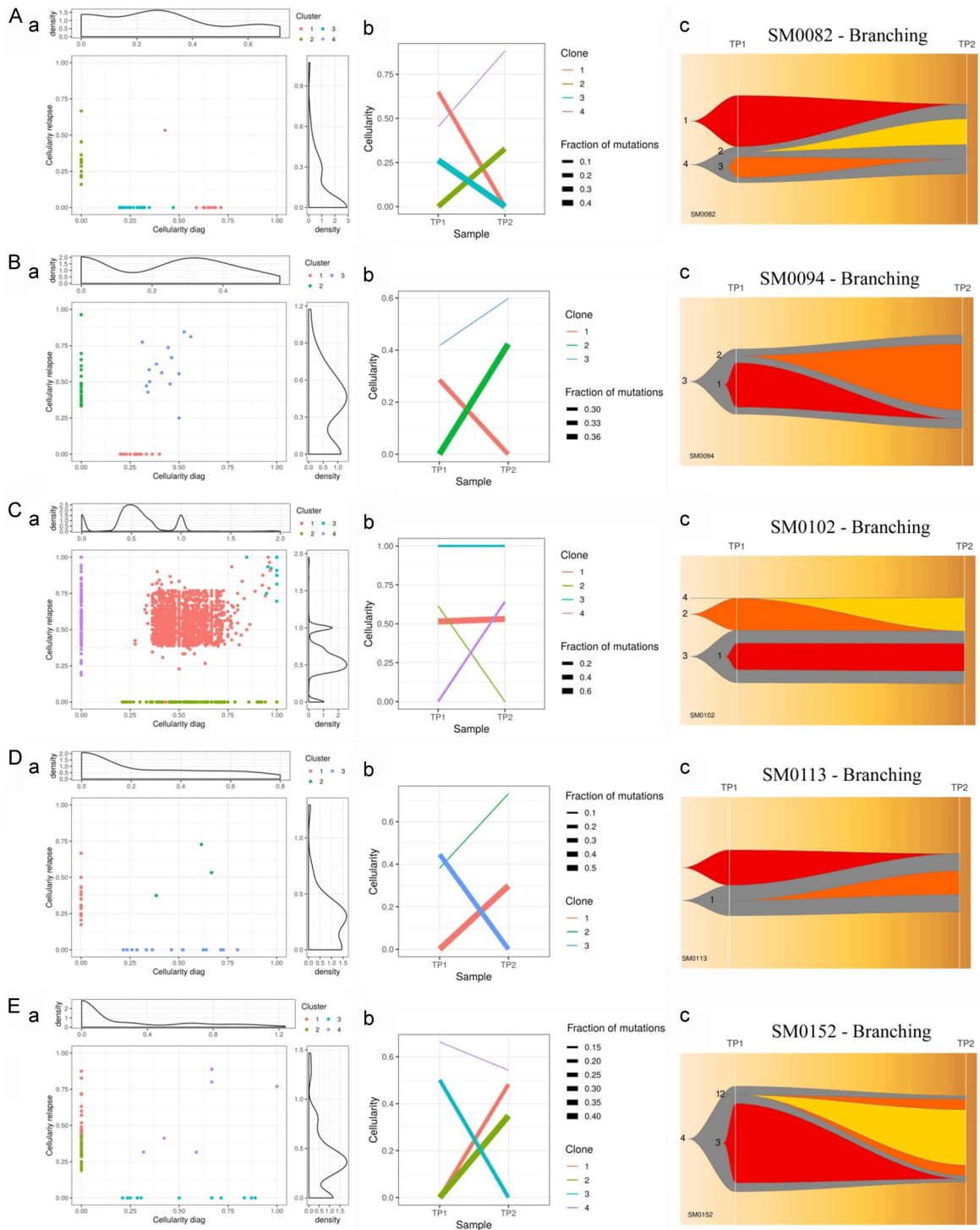


Clonal evolution in multiple myeloma



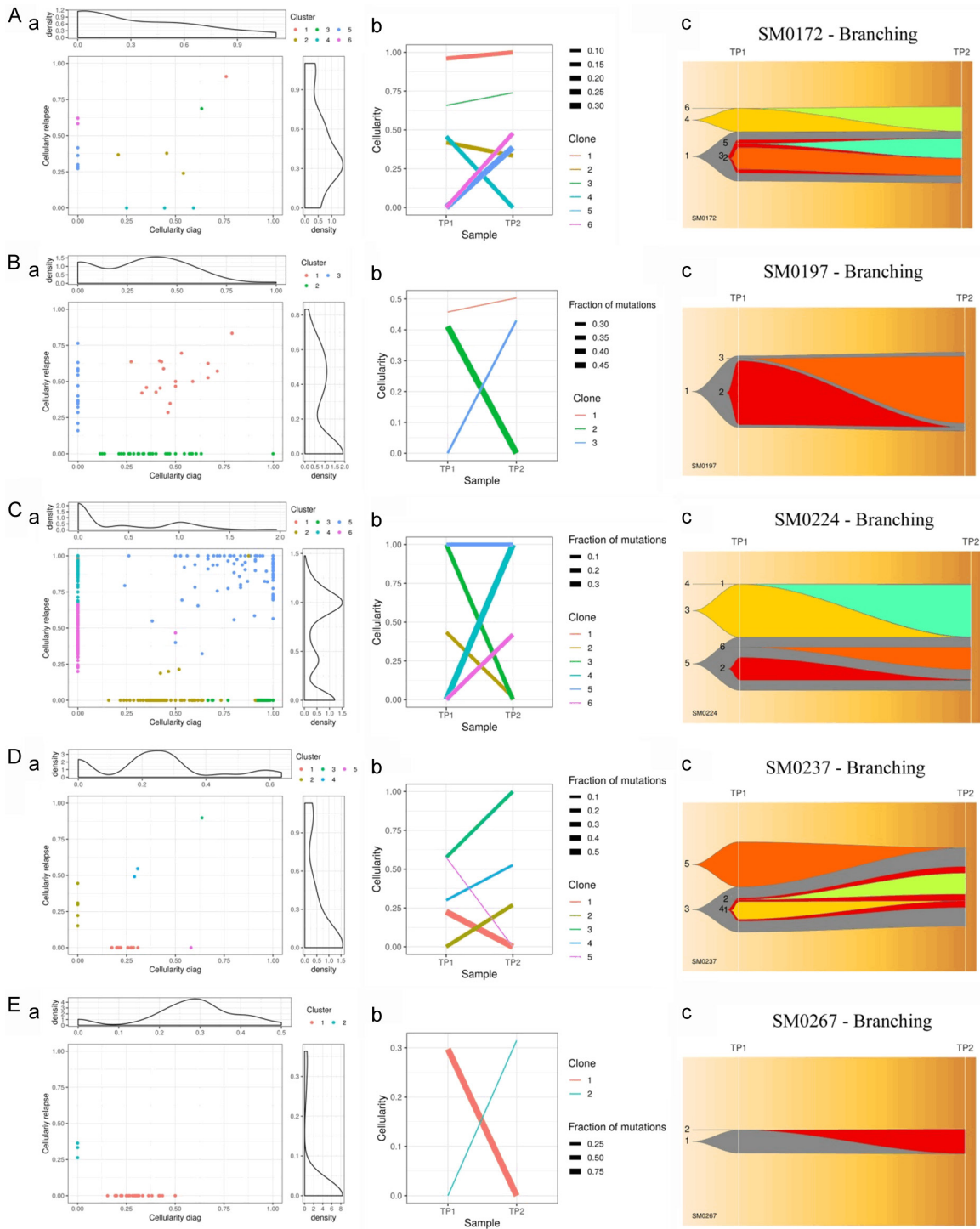
Supplementary Figure 1. (A-E) Clonal evolution in each case of MM. Representation of clonal evolution through (a) Density, (b) Evolution and (c) Fish plots across individual MM patients with branching, linear and stable with loss of clone patterns of clonal evolution. [Supplementary Note 1](#) (Casewise clonal evolution).

Clonal evolution in multiple myeloma



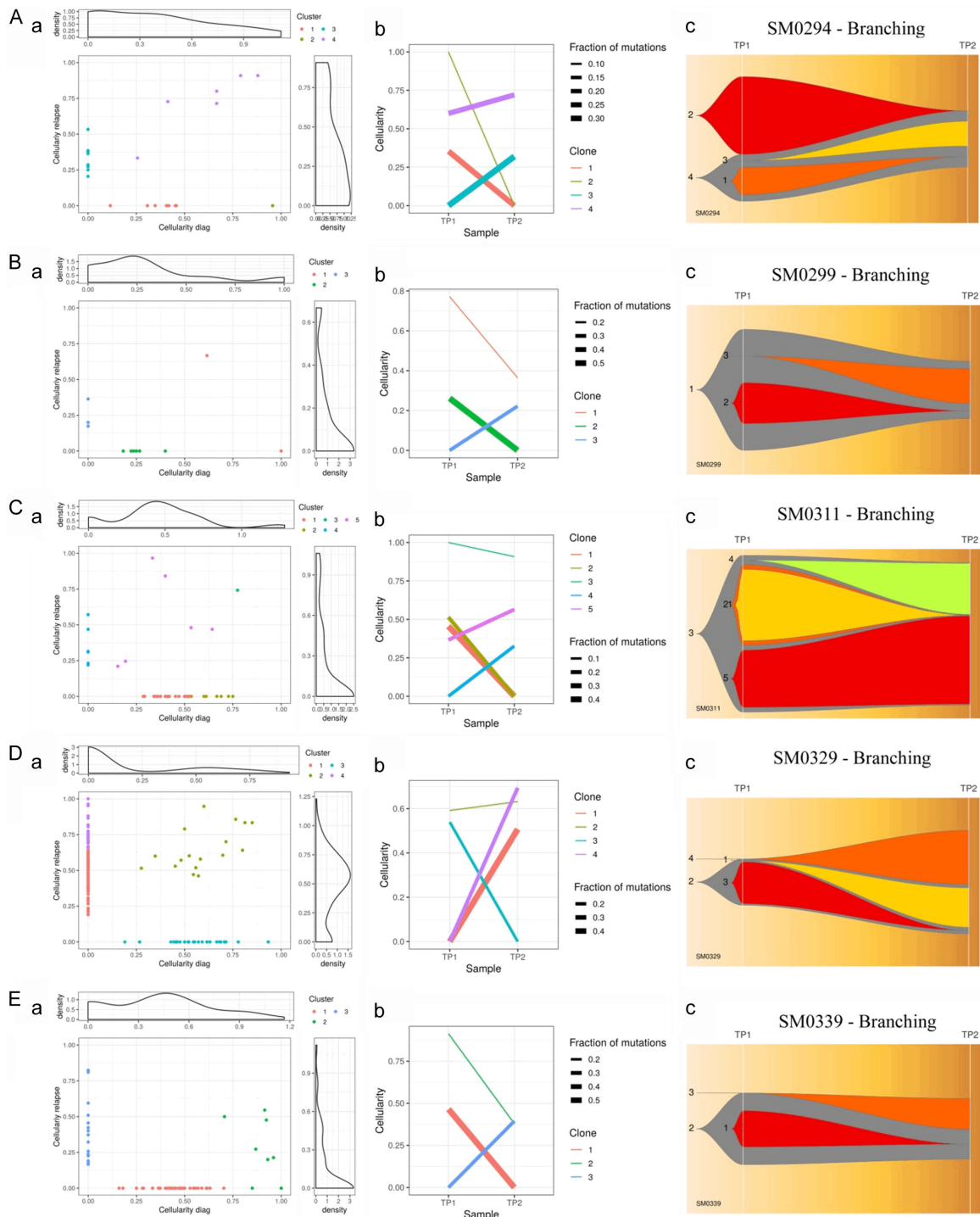
Supplementary Figure 2. (A-E) Clonal evolution in each case of MM. Representation of clonal evolution through (a) Density, (b) Evolution and (c) Fish plots across individual MM patients with branching, linear and stable with loss of clone patterns of clonal evolution. [Supplementary Note 1](#) (Casewise clonal evolution).

Clonal evolution in multiple myeloma



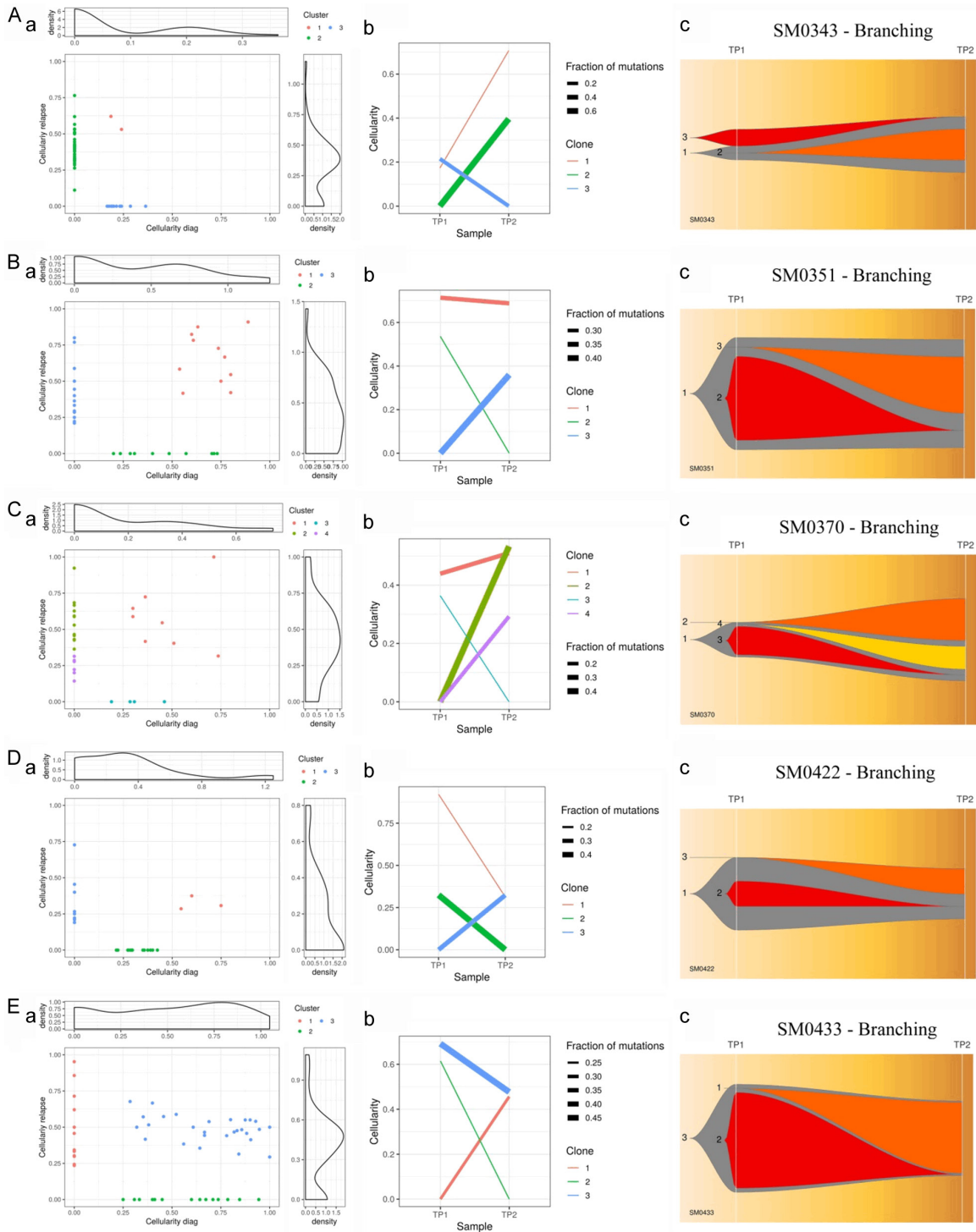
Supplementary Figure 3. (A-E) Clonal evolution in each case of MM. Representation of clonal evolution through (a) Density, (b) Evolution and (c) Fish plots across individual MM patients with branching, linear and stable with loss of clone patterns of clonal evolution. [Supplementary Note 1](#) (Casewise clonal evolution).

Clonal evolution in multiple myeloma



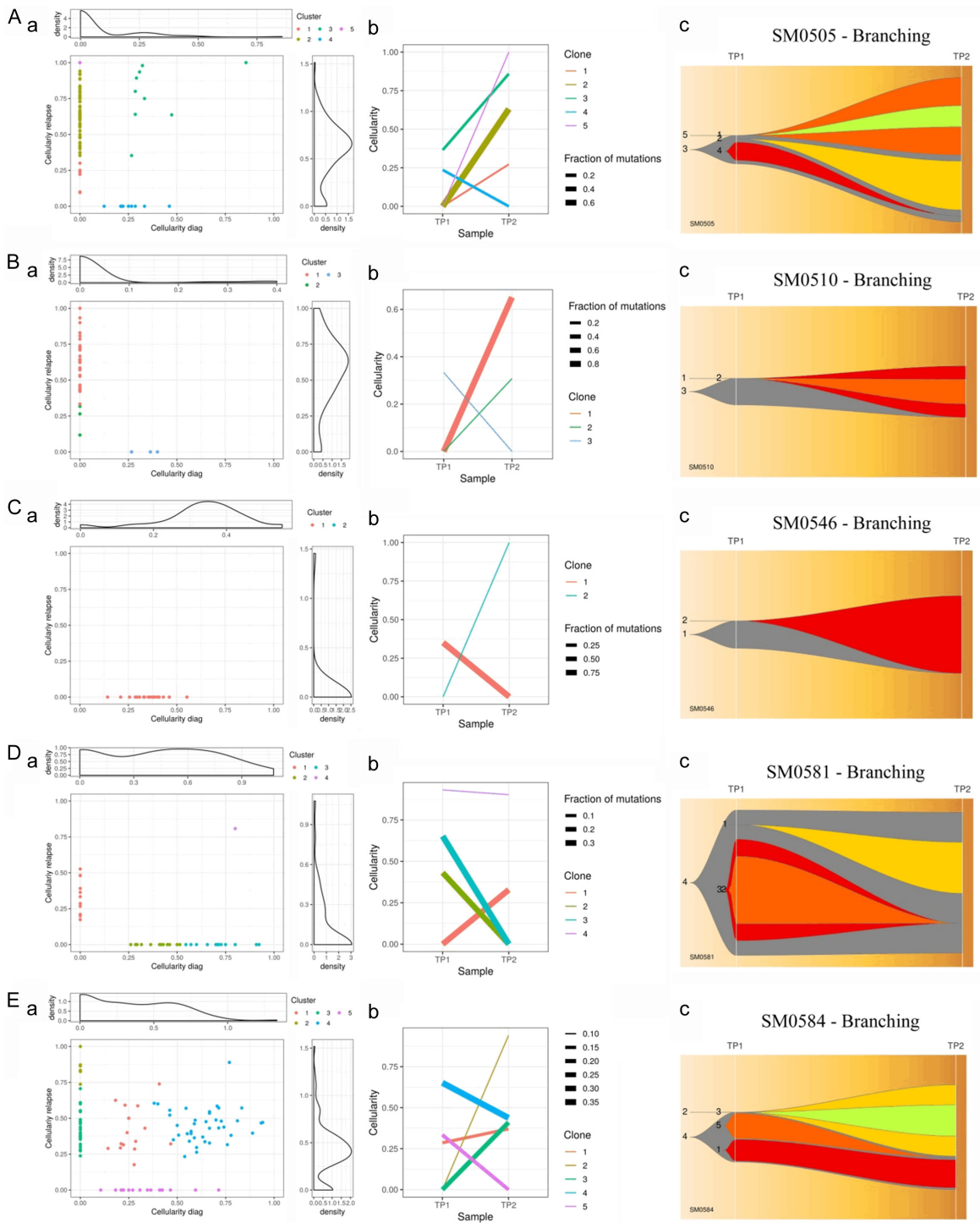
Supplementary Figure 4. (A-E) Clonal evolution in each case of MM. Representation of clonal evolution through (a) Density, (b) Evolution and (c) Fish plots across individual MM patients with branching, linear and stable with loss of clone patterns of clonal evolution. [Supplementary Note 1](#) (Casewise clonal evolution).

Clonal evolution in multiple myeloma



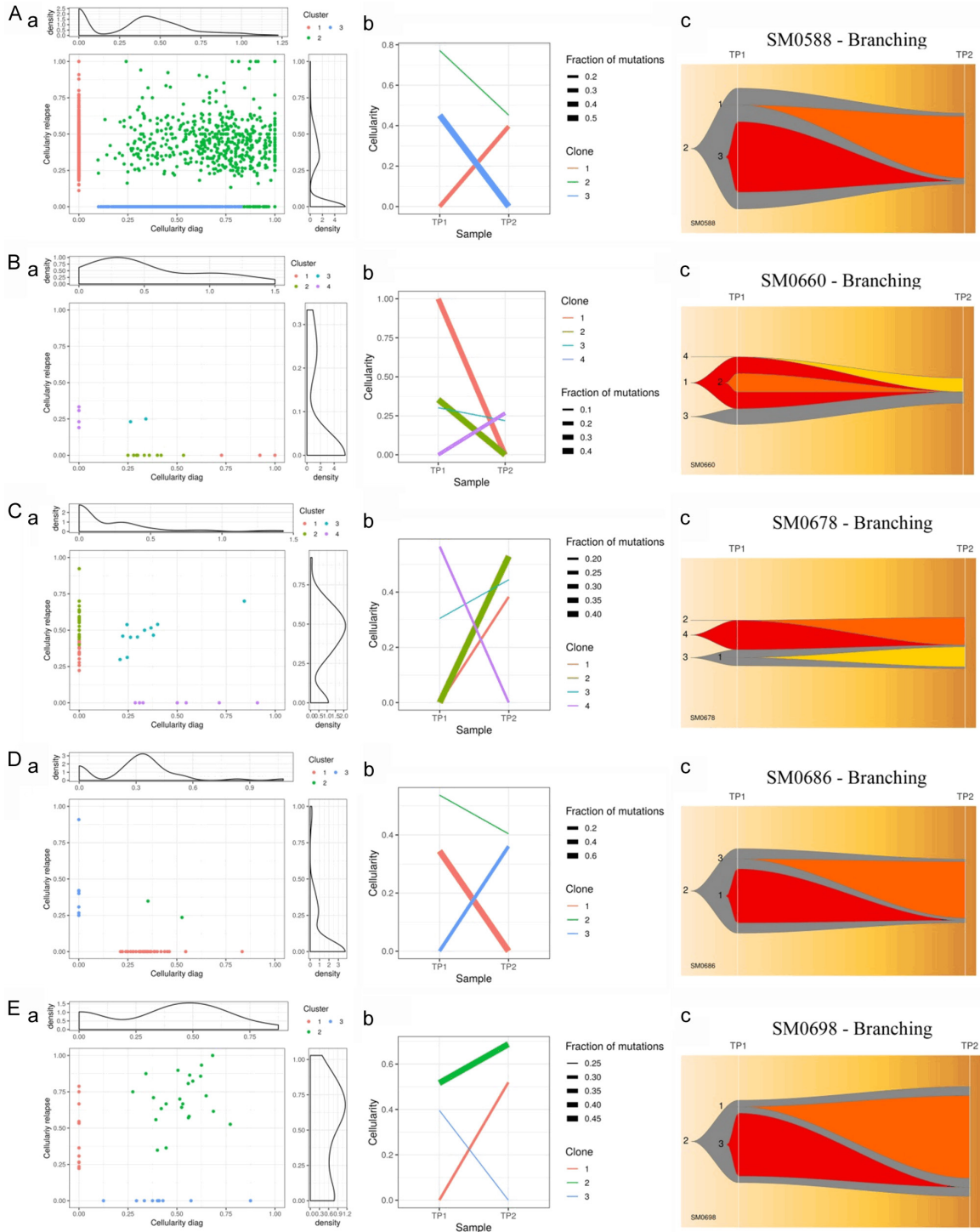
Supplementary Figure 5. (A-E) Clonal evolution in each case of MM. Representation of clonal evolution through (a) Density, (b) Evolution and (c) Fish plots across individual MM patients with branching, linear and stable with loss of clone patterns of clonal evolution. [Supplementary Note 1](#) (Casewise clonal evolution).

Clonal evolution in multiple myeloma



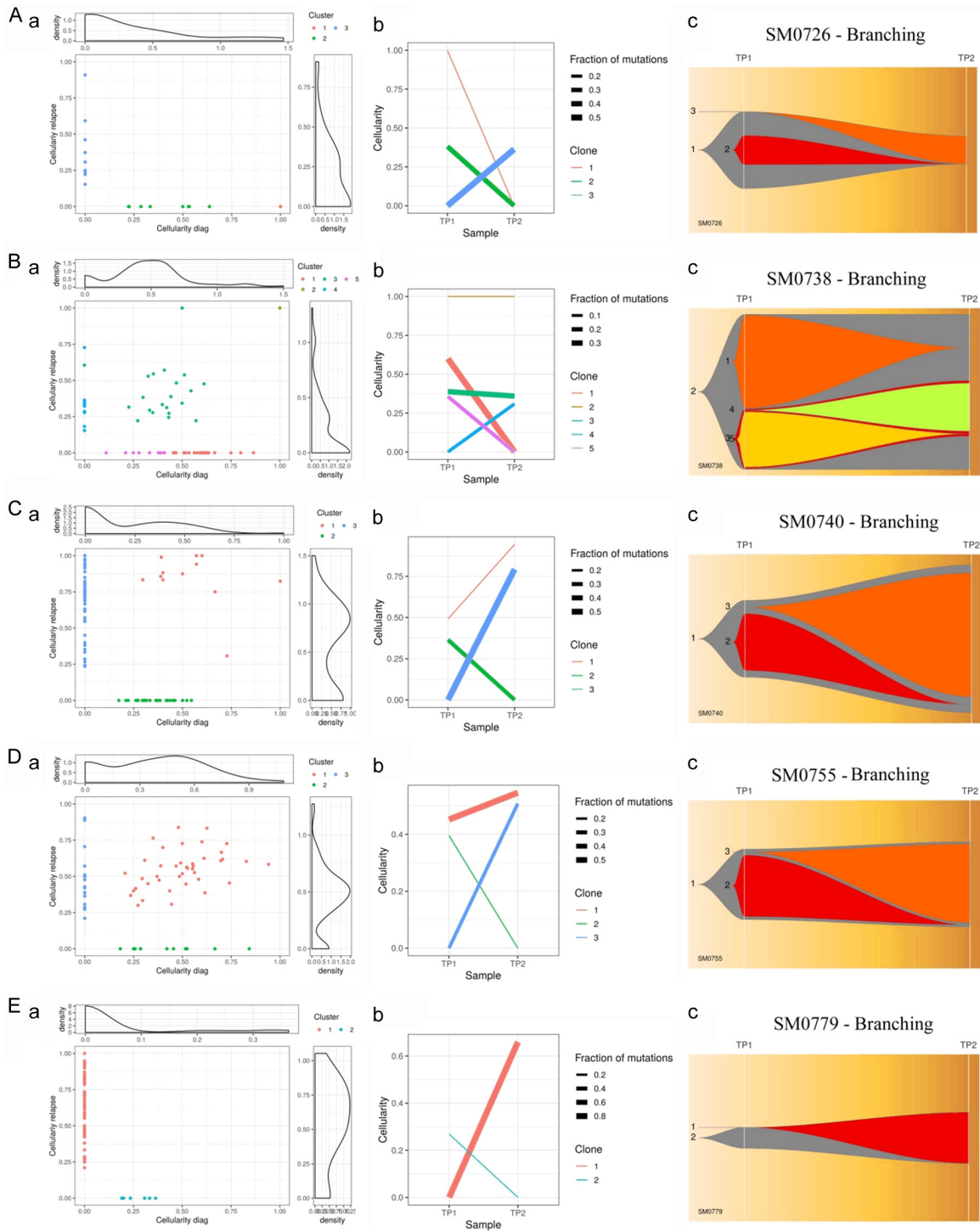
Supplementary Figure 6. (A-E) Clonal evolution in each case of MM. Representation of clonal evolution through (a) Density, (b) Evolution and (c) Fish plots across individual MM patients with branching, linear and stable with loss of clone patterns of clonal evolution. [Supplementary Note 1](#) (Casewise clonal evolution).

Clonal evolution in multiple myeloma



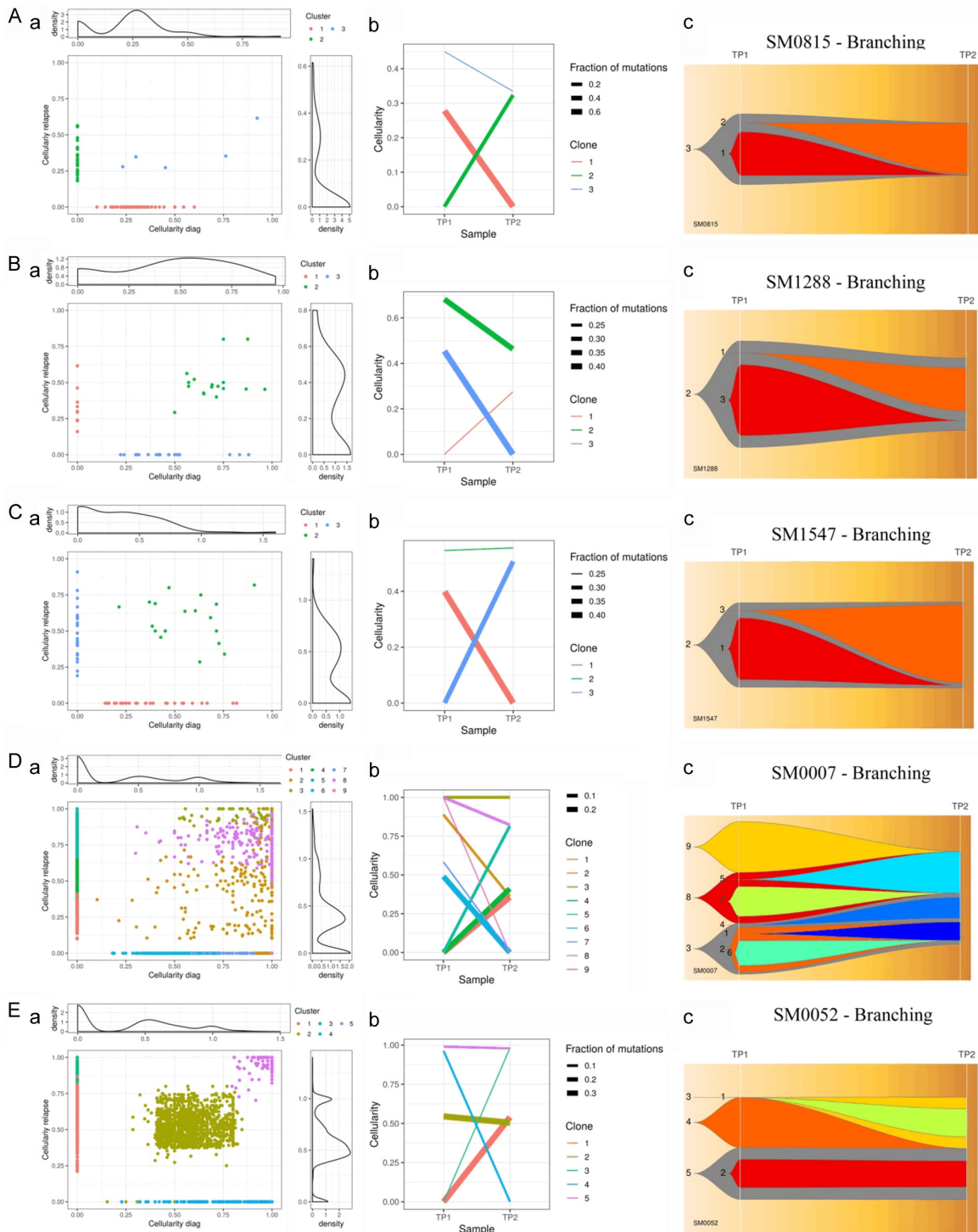
Supplementary Figure 7. (A-E) Clonal evolution in each case of MM. Representation of clonal evolution through (a) Density, (b) Evolution and (c) Fish plots across individual MM patients with branching, linear and stable with loss of clone patterns of clonal evolution. [Supplementary Note 1](#) (Casewise clonal evolution).

Clonal evolution in multiple myeloma



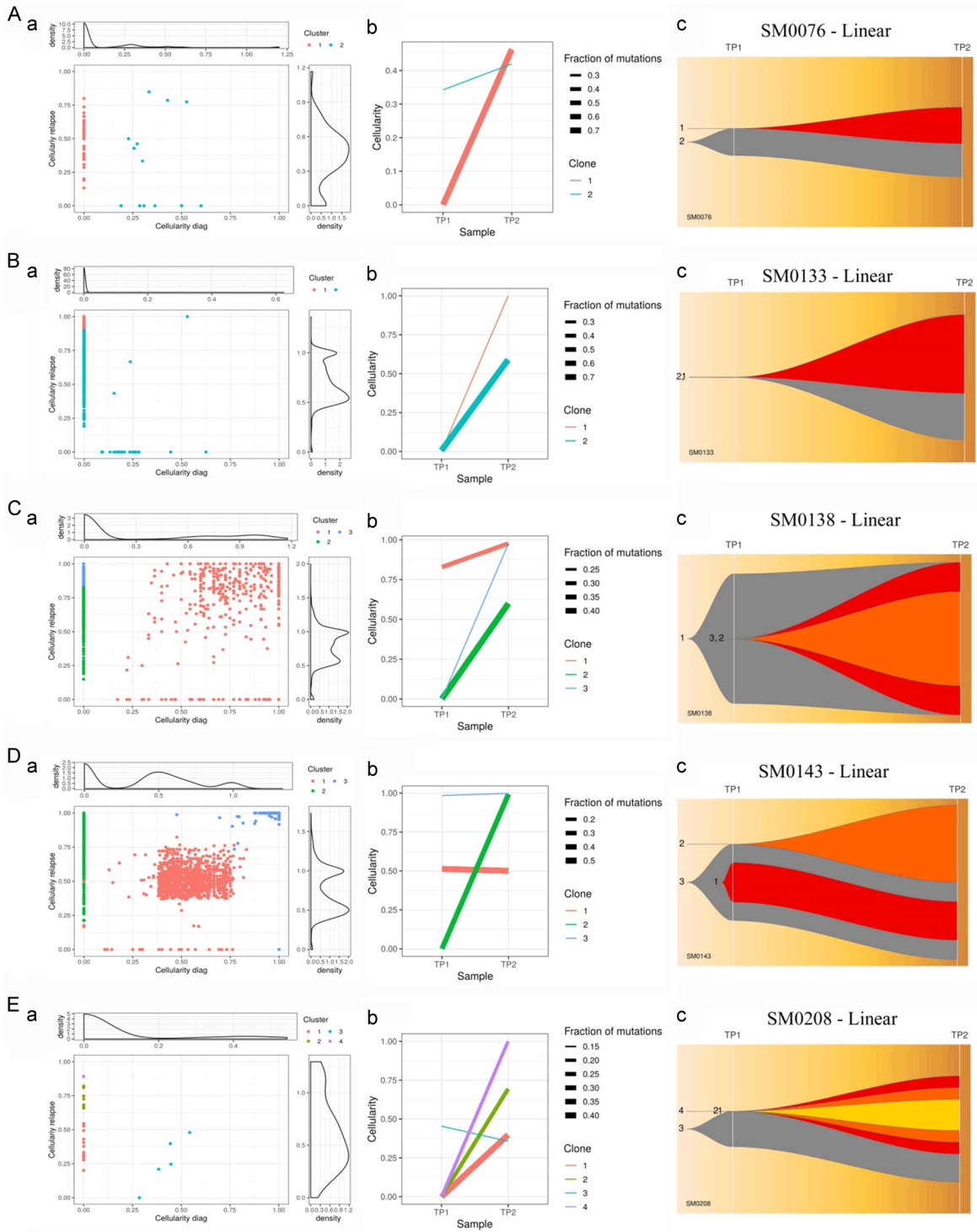
Supplementary Figure 8. (A-E) Clonal evolution in each case of MM. Representation of clonal evolution through (a) Density, (b) Evolution and (c) Fish plots across individual MM patients with branching, linear and stable with loss of clone patterns of clonal evolution. [Supplementary Note 1](#) (Casewise clonal evolution).

Clonal evolution in multiple myeloma



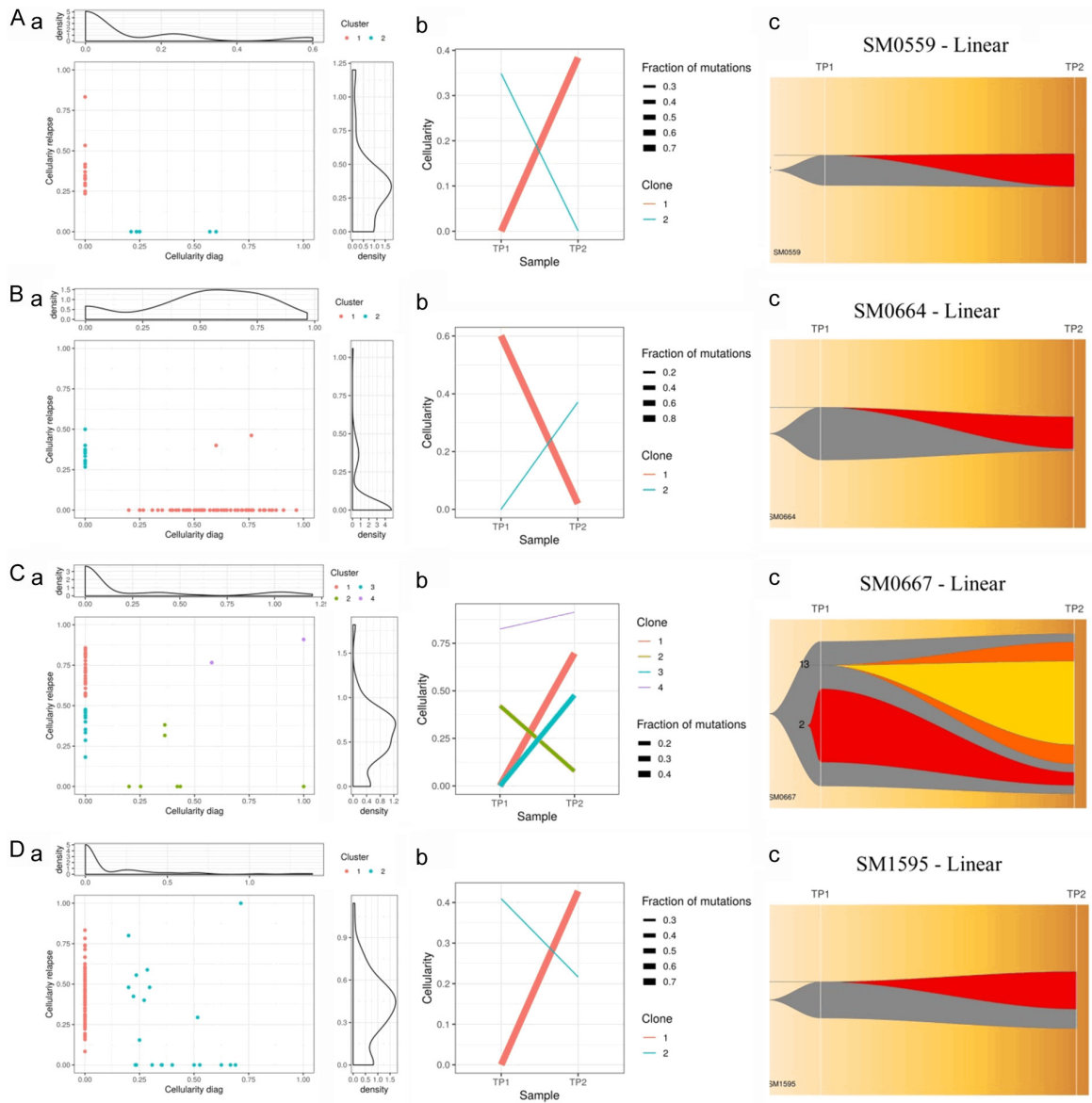
Supplementary Figure 9. (A-E) Clonal evolution in each case of MM. Representation of clonal evolution through (a) Density, (b) Evolution and (c) Fish plots across individual MM patients with branching, linear and stable with loss of clone patterns of clonal evolution. [Supplementary Note 1](#) (Casewise clonal evolution).

Clonal evolution in multiple myeloma



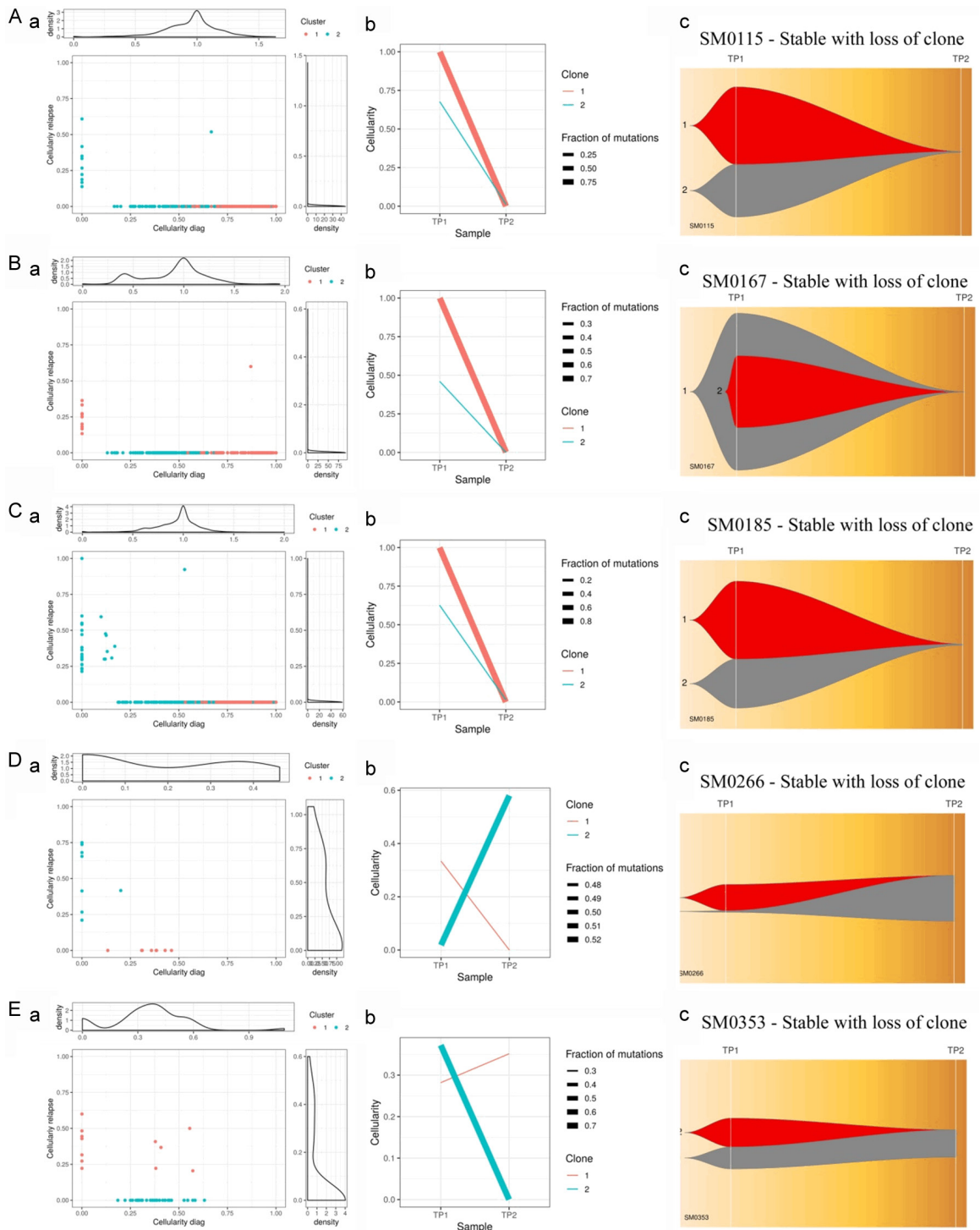
Supplementary Figure 10. (A-E) Clonal evolution in each case of MM. Representation of clonal evolution through (a) Density, (b) Evolution and (c) Fish plots across individual MM patients with branching, linear and stable with loss of clone patterns of clonal evolution. [Supplementary Note 1](#) (Casewise clonal evolution).

Clonal evolution in multiple myeloma



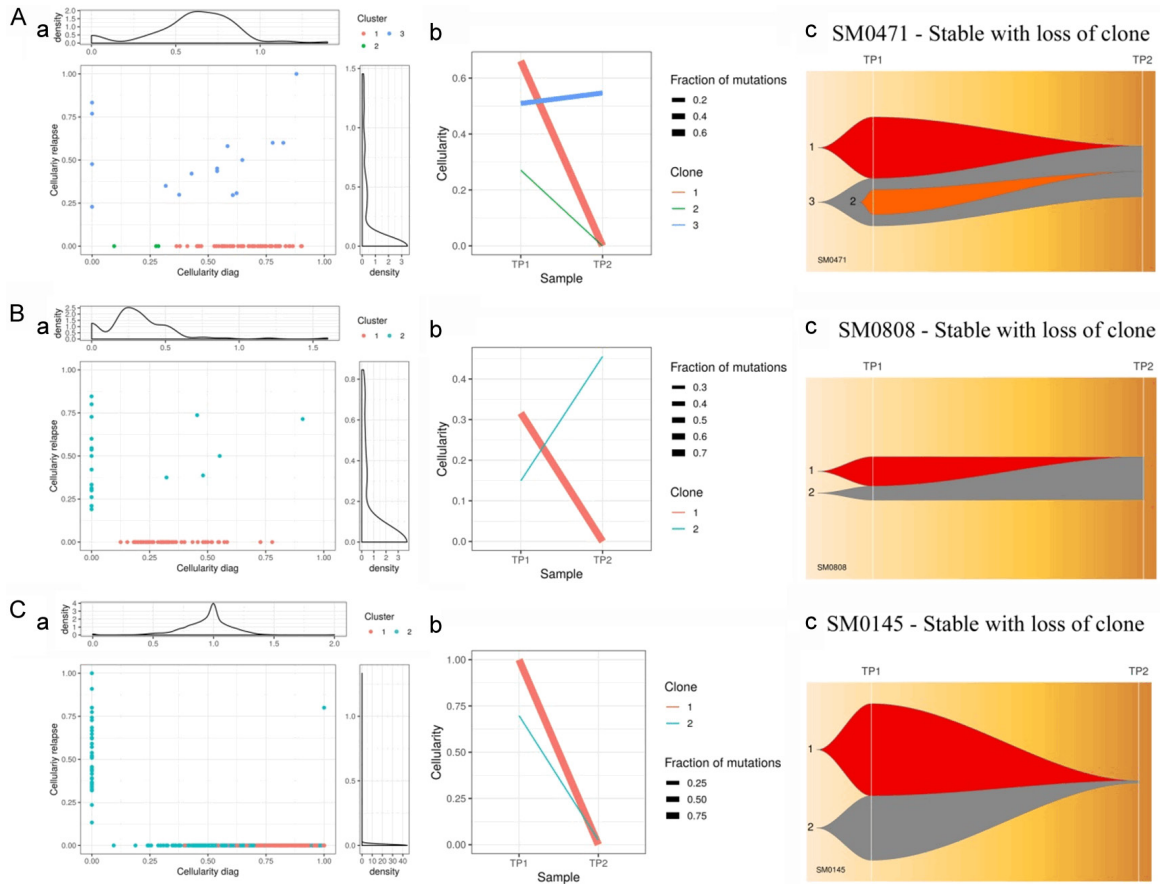
Supplementary Figure 11. (A-D) Clonal evolution in each case of MM. Representation of clonal evolution through (a) Density, (b) Evolution and (c) Fish plots across individual MM patients with branching, linear and stable with loss of clone patterns of clonal evolution. [Supplementary Note 1](#) (Casewise clonal evolution).

Clonal evolution in multiple myeloma



Supplementary Figure 12. (A-E) Clonal evolution in each case of MM. Representation of clonal evolution through (a) Density, (b) Evolution and (c) Fish plots across individual MM patients with branching, linear and stable with loss of clone patterns of clonal evolution. [Supplementary Note 1](#) (Casewise clonal evolution).

Clonal evolution in multiple myeloma



Supplementary Figure 13. (A-C) Clonal evolution in each case of MM. Representation of clonal evolution through (a) Density, (b) Evolution and (c) Fish plots across individual MM patients with branching, linear and stable with loss of clone patterns of clonal evolution. [Supplementary Note 1](#) (Casewise clonal evolution).