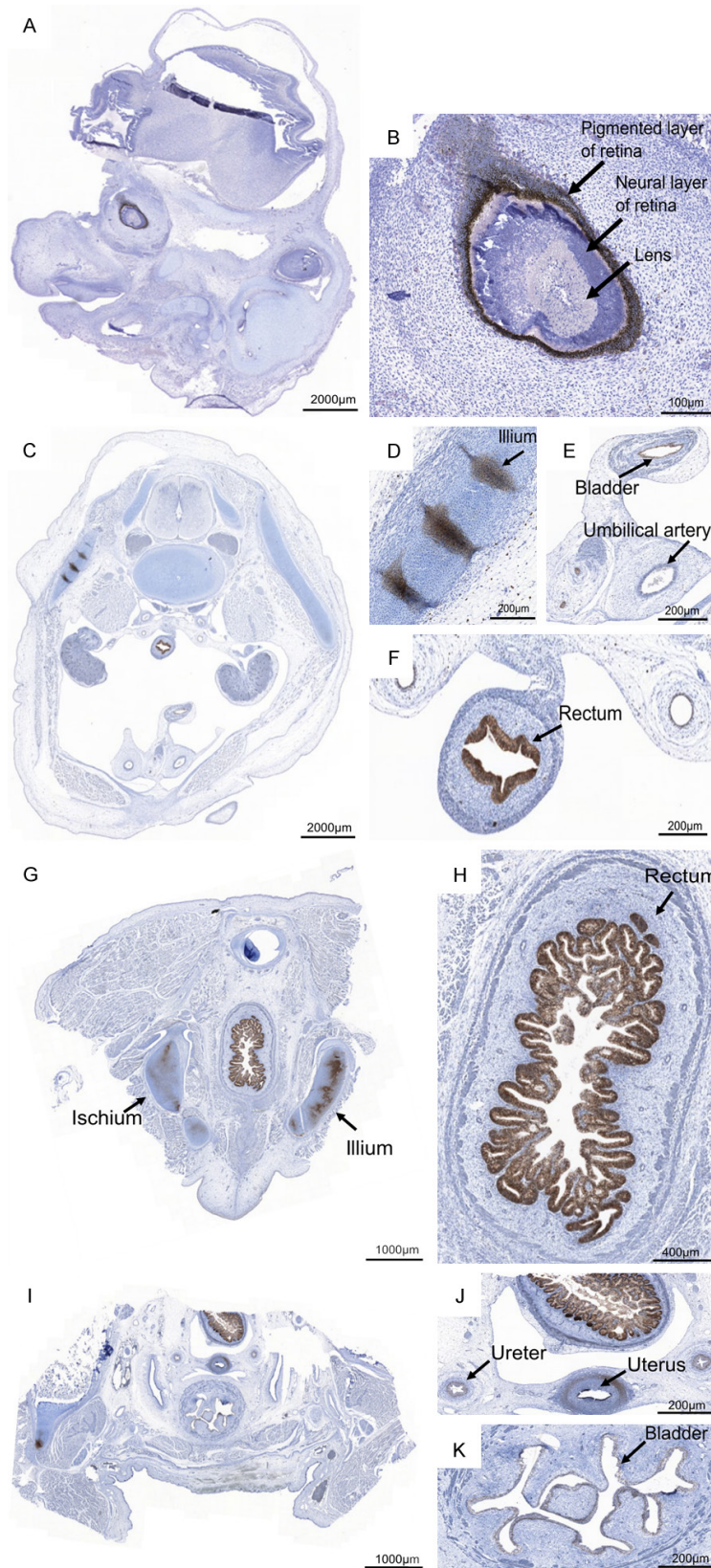


AGR2 in development and cancer



Supplementary Figure 1. AGR2 expression across several tissues. Apart from the gastrointestinal tract (shown in **Figure 1**), AGR2 was also found to be expressed across several other human embryonic tissues including: the pigmented layer of the retina in CS22 (A, B); the ilium, common iliac artery, umbilical arteries, rectum, testis, ureters, and bladder in PCW9 (C-F), ischium, ilium, and rectum in PCW12 (G, H); and uterus, ureter and bladder in PCW14 (I-K).