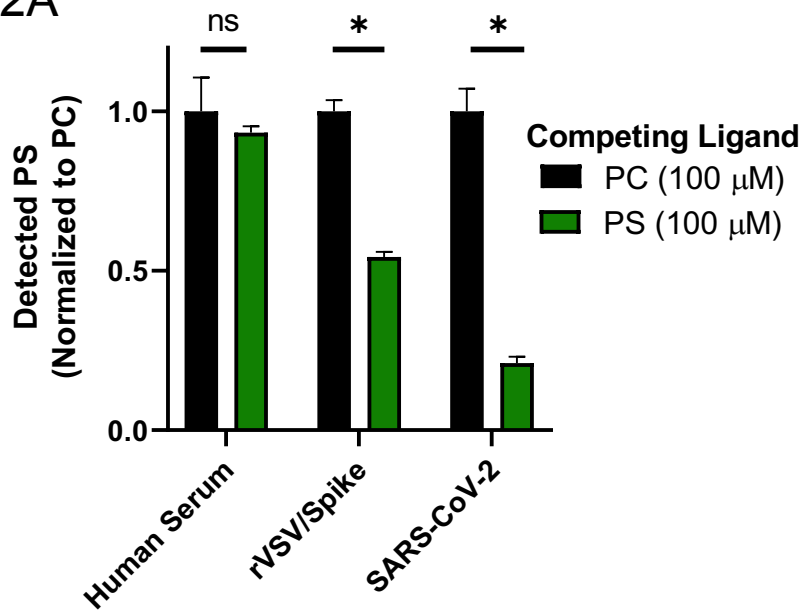
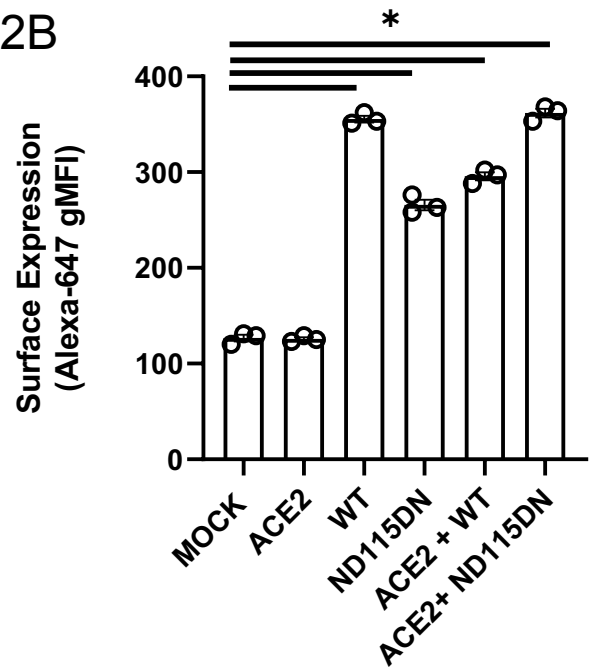


S2 Fig

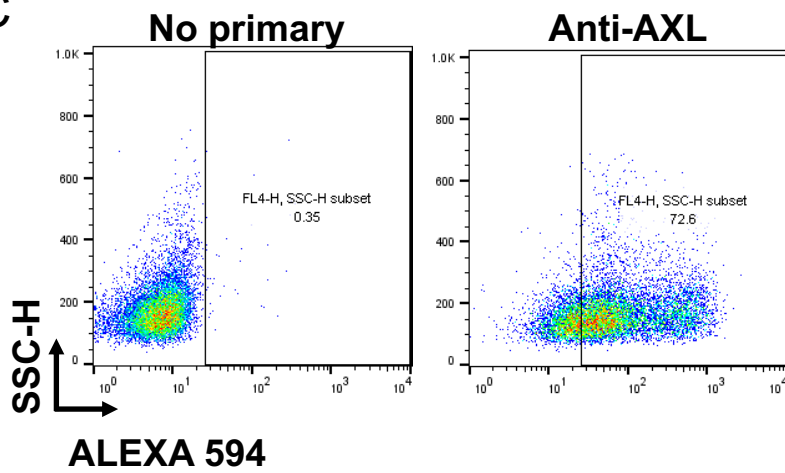
S2A



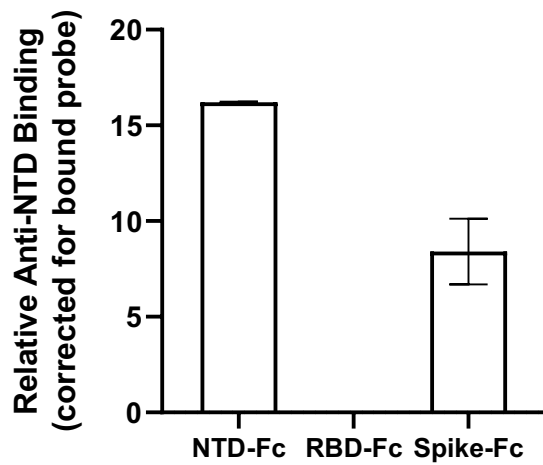
S2B



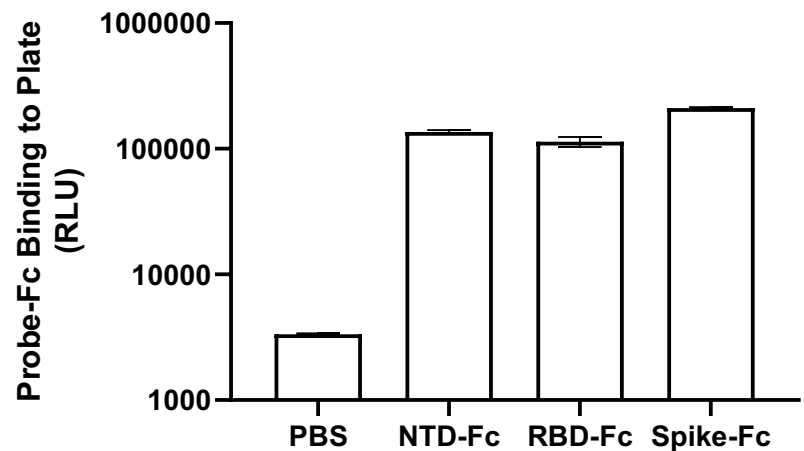
S2C



S2D



S2E



S2 Fig: PS receptors interact with SARS-CoV-2 by binding to PS.
S2A) PS liposomes compete with PS on purified virions for binding to bavituximab. **S2B)** TIM-1 mutant ND115DN is highly expressed after plasmid transfection in HEK 293T cells. **S2C)** AXL surface expression in transfected HEK 293T cells. **S2D)** Purified Spike ectodomain-Fc and NTD-Fc are detected by an NTD monoclonal antibody by ELISA. **S2E)** All Spike-Fc proteins bind and are detected at equivalent levels of ELISA plates.

Data represented as means \pm SEM. Two-Way ANOVA with multiple comparisons (**S2A**), One-Way ANOVA with multiple comparisons (**S2B**); asterisks represent $p < 0.05$.