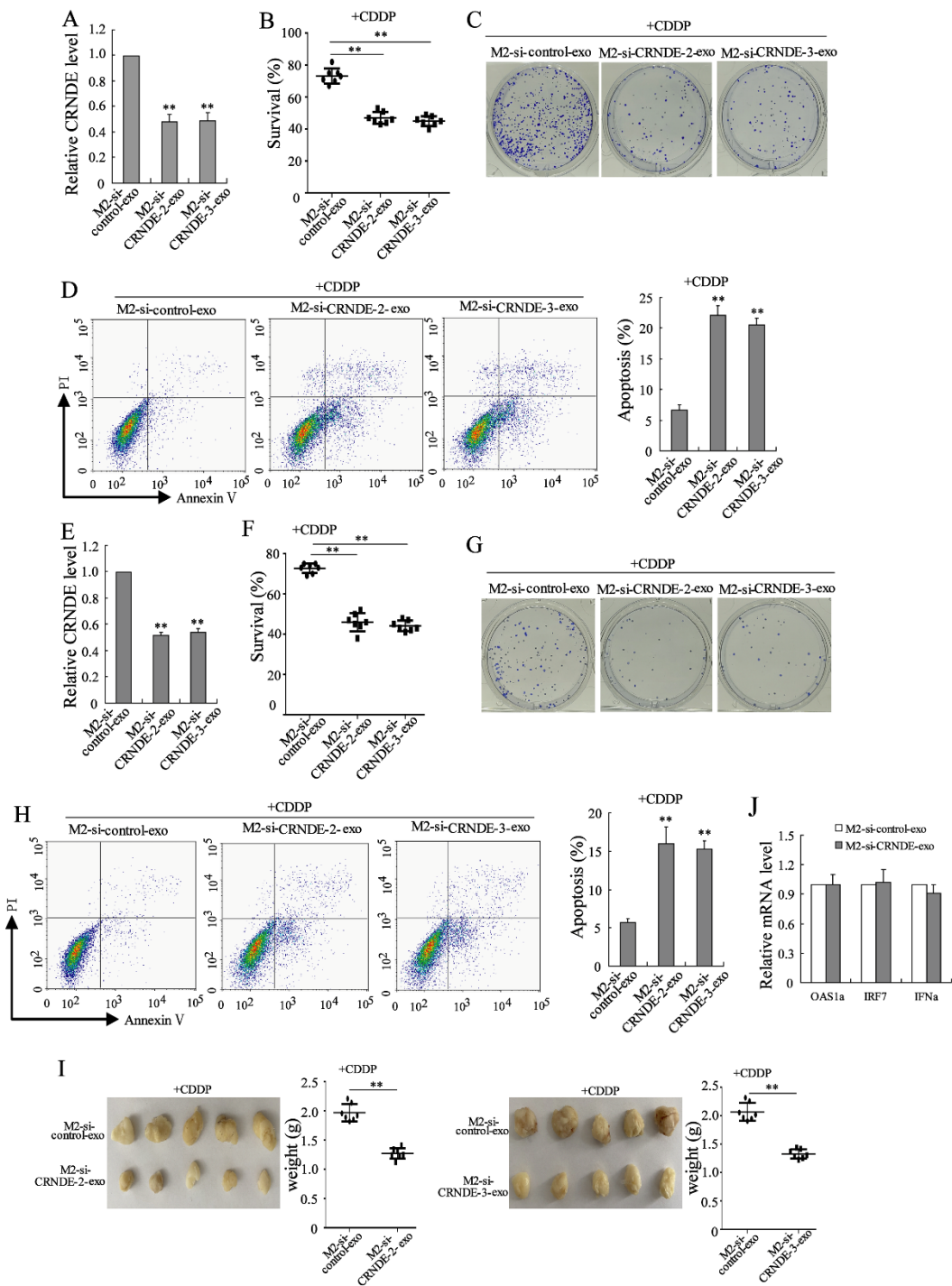

Appendix

Table of Content

Appendix Figure S1.....	2-3
Appendix Figure S2.....	4-5



Appendix Figure S2 The exosomal transfer of LncRNA CRNDE induced cisplatin resistance

(A-D) Exosomes were isolated from the media of BMDMs transfected with si-control (M2-si-control-exo), si-CRNDE-2 (M2-si-CRNDE-2-exo), or si-CRNDE 3 (M2-si-CRNDE-3-exo). Then, MFC cells were treated with indicated exosomes and cisplatin

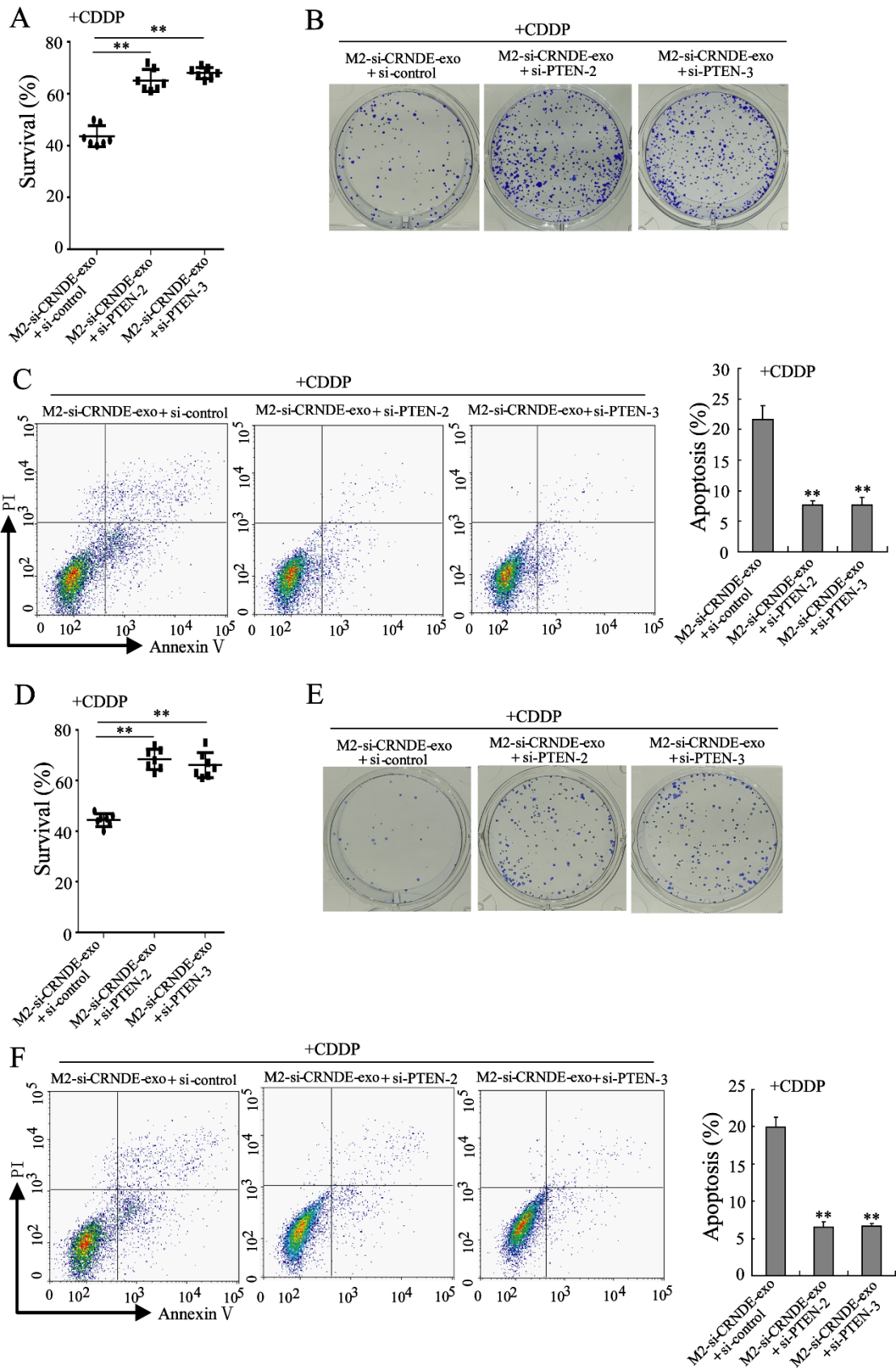
(CDDP; 1 $\mu\text{g/ml}$) for 48 h. (A) LncRNA CRNDE expression in indicated exosomes. $**P<0.01$ vs. M2-si-control-exo. (B) The survival rate of MFC cells. $**P<0.01$. (C) Representative images of colony formation assay. (D) Cell apoptosis. $**P<0.01$ vs. M2-si-control-exo.

(E-H) Exosomes were isolated from the medium of monocytes transfected with si-control (M2-si-control-exo), si-CRNDE-2 (M2-si-CRNDE-2-exo), or si-CRNDE 3 (M2-si-CRNDE-3-exo). Then, SGC7901 cells were treated with indicated exosomes and CDDP (1 $\mu\text{g/ml}$). (E) LncRNA CRNDE expression ($**P<0.01$ vs. M2-si-control-exo), (F) cell survival rate ($**P<0.01$), (G) cell proliferation, and (H) cell apoptosis ($**P<0.01$ vs. M2-si-control-exo) were measured.

(I) The tumor photos and weight of homograft tumors treated with CDDP+ M2-si-control-exo, CDDP+ M2-si-CRNDE-2-exo, or CDDP+ M2-si-CRNDE-3-exo. $**P<0.01$.

(J) The mRNA levels of 2',5'-oligoadenylate synthetase (OAS1a), interferon regulatory factor 7 (IRF7), and interferon-alpha (IFN α) in SGC7901 cells treated with M2-si-control-exo or M2-si-CRNDE-exo.

Data information: (A, D, E, H and J): The results are from three biological replications. (B, F, and I): The results are from seven biological replications. Data are expressed as mean \pm SD. (A-I): One-way ANOVA; (J): Student's t-test.



Appendix Figure S3 PTEN mediated the modulatory effect of exosomal LncRNA CRNDE on the sensitivity of GC cells to CDDP

(A-C) (A) Cell survival rate (** $P < 0.01$), (B) cell proliferation, and (C) cell apoptosis (** $P < 0.01$ vs. M2-si-CRNDE-exo+si-control) in MFC cells treated with M2-si-CRNDE-exo+si-control, M2-si-CRNDE-exo+si-PTEN-2, or M2-si-CRNDE-exo+si-PTEN-3 (exos were derived from BMDMs).

(D-F) (D) Cell survival rate (** $P < 0.01$), (E) cell proliferation, and (F) cell apoptosis (** $P < 0.01$ vs. M2-si-CRNDE-exo+si-control) in SGC7901 cells treated with M2-si-CRNDE-exo+si-control, M2-si-CRNDE-exo+si-PTEN-2, or M2-si-CRNDE-exo+si-PTEN-3 (exos were derived from monocytes).

Data information: (A and D): The results are from seven biological replications. (C and F): The results are from three biological replications. Data are expressed as mean \pm SD. One-way ANOVA.