

Figure S1. Histopathological examination of the needle biopsy specimen obtained from the patient's previous medical records. The pathological findings were described as tongue mucosal tissue with thick collagen bundles interspersed with numerous capillaries and dotted chronic inflammatory cells under the surface squamous epithelium, suggesting a diagnosis of irritation fibroma. H&E staining; scale bar, 250 μm .

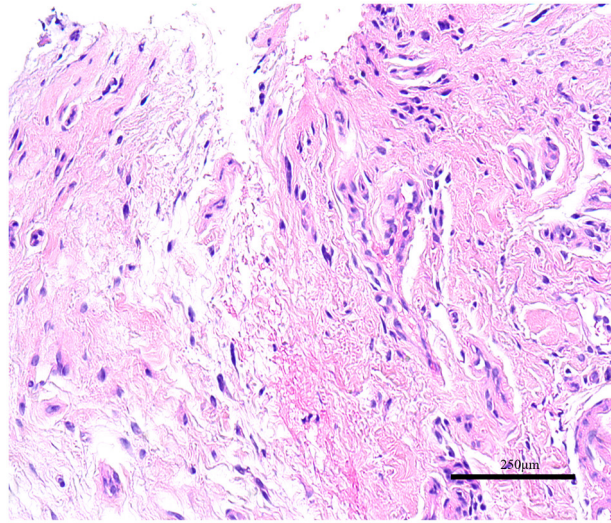


Figure S2. Macroscopic appearance of the tongue after 1 year of postoperative follow-up. The surgical site at the right anterior tongue (arrowhead) appears to have healed uneventfully.



Figure S3. Postoperative axial CT scan of the oral cavity. A CT examination at 1 year postoperatively revealed no pathological findings.

