

The effect of paclitaxel on apoptosis, autophagy and mitotic catastrophe in AGS cells

Tin Myo KHING, Won Seok CHOI, Dong Min KIM, Wah Wah PO, Wynn THEIN, Chang Yell SHIN and Uy Dong SOHN*

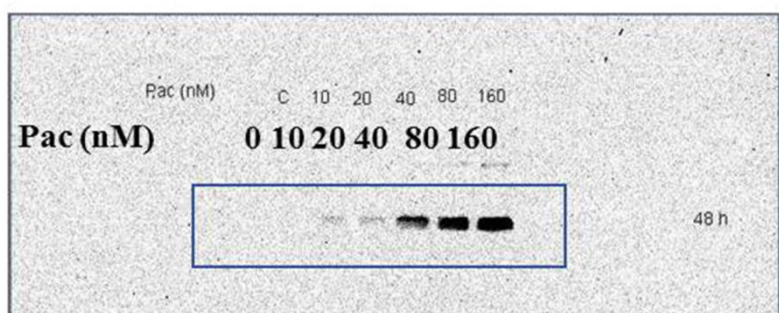
Laboratory of Signaling and Pharmacological Activity, Department of Pharmacology, College of Pharmacy, Chung-Ang University, Seoul, Republic of Korea

***Corresponding author:** Uy Dong Sohn, Professor, Ph.D., Department of Pharmacology, College of Pharmacy, Chung-Ang University, Seoul, 06974, Republic of Korea. Tel.: +82 28205614, Fax: 011 +8228268752, e-mail: udsohn@cau.ac.kr

Fig.2d

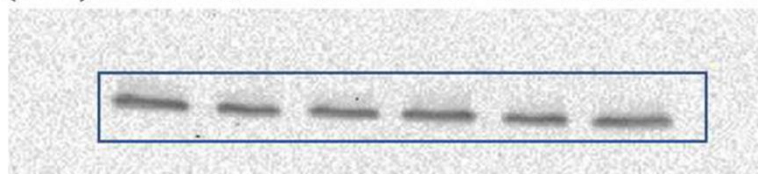
Caspase -3

Cleaved Caspase 3

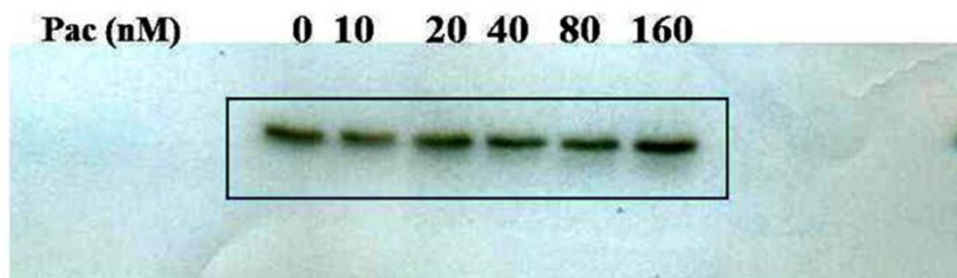


Procaspase 3

Pac (nM) 0 10 20 40 80 160

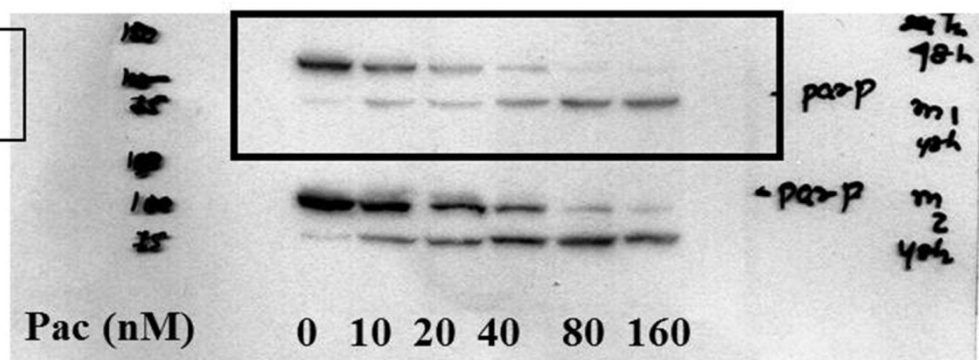


β -Actin



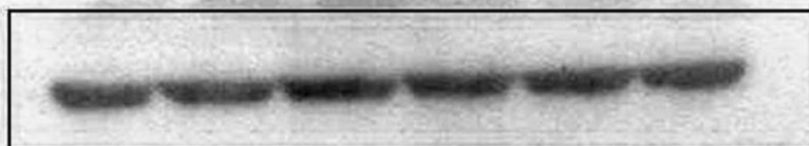
PARP

PARP
Cleaved PARP



β -Actin

Pac (nM) 0 10 20 40 80 160



Supplementary Fig. B

Fig. B Photographs of the full-length blots described in Figure 3

Fig. 3b

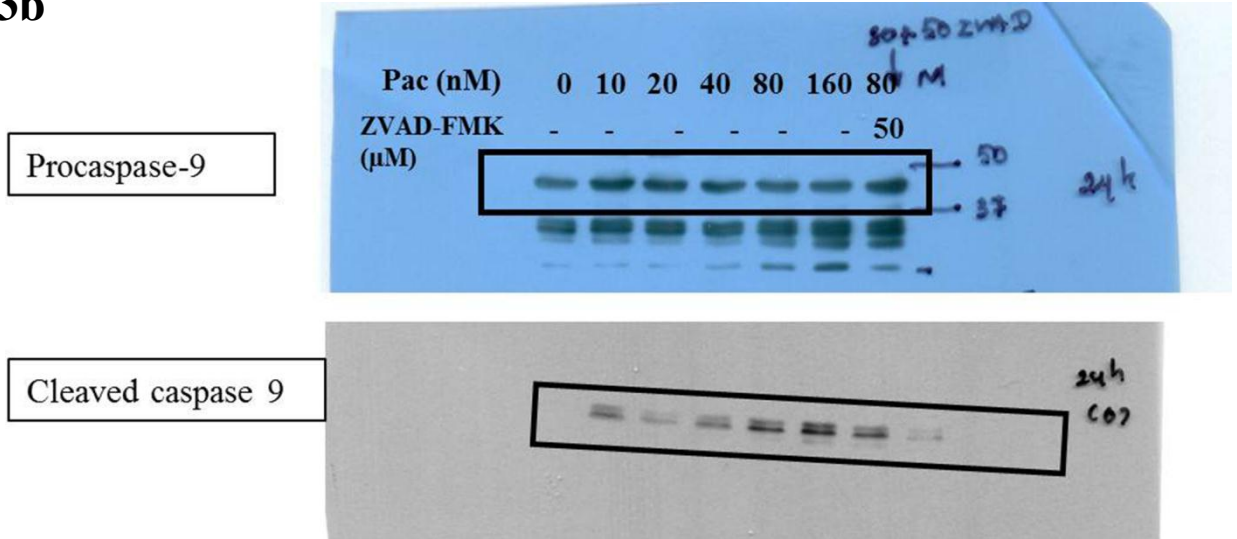


Fig. 3c

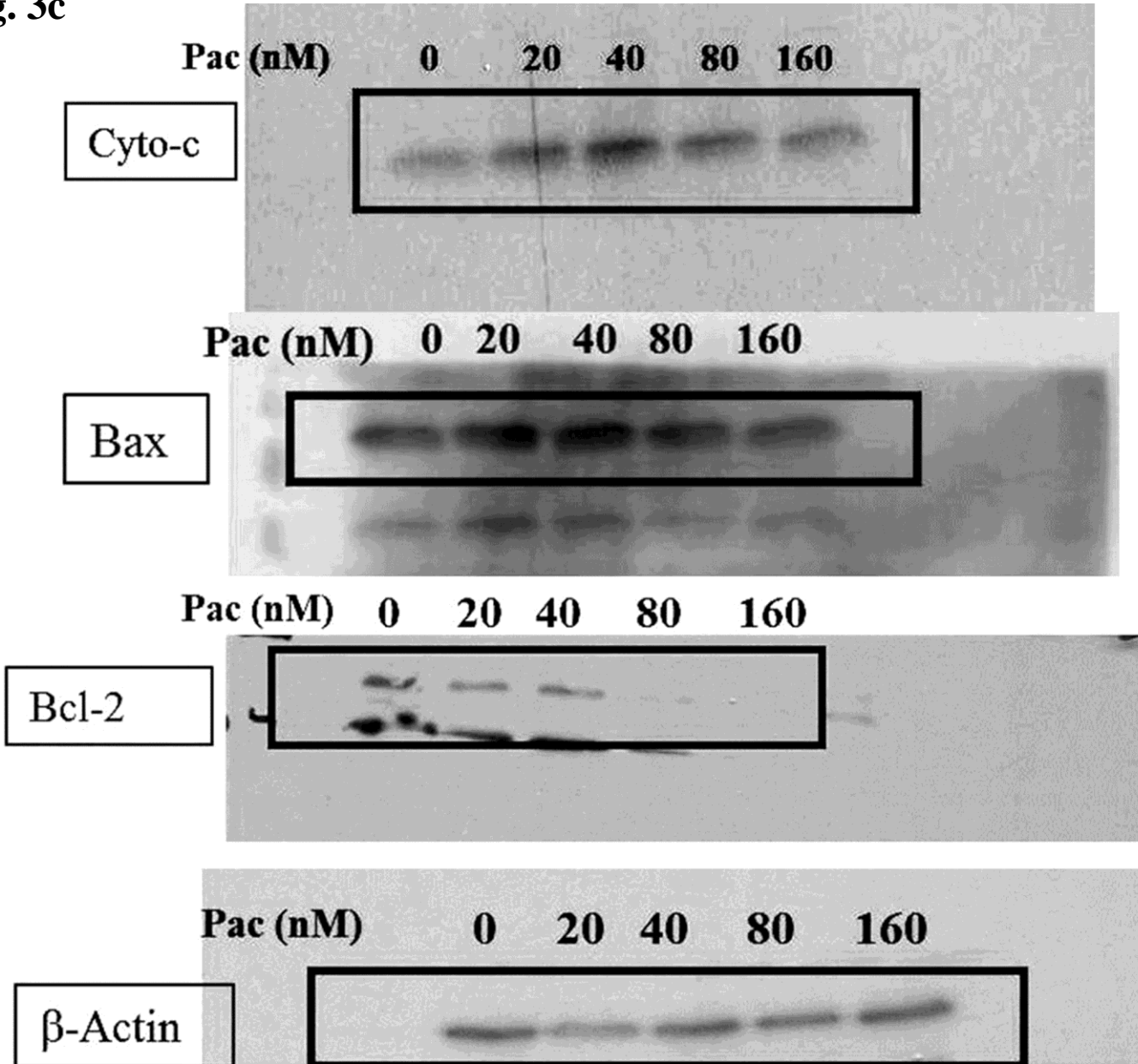


Fig.3d

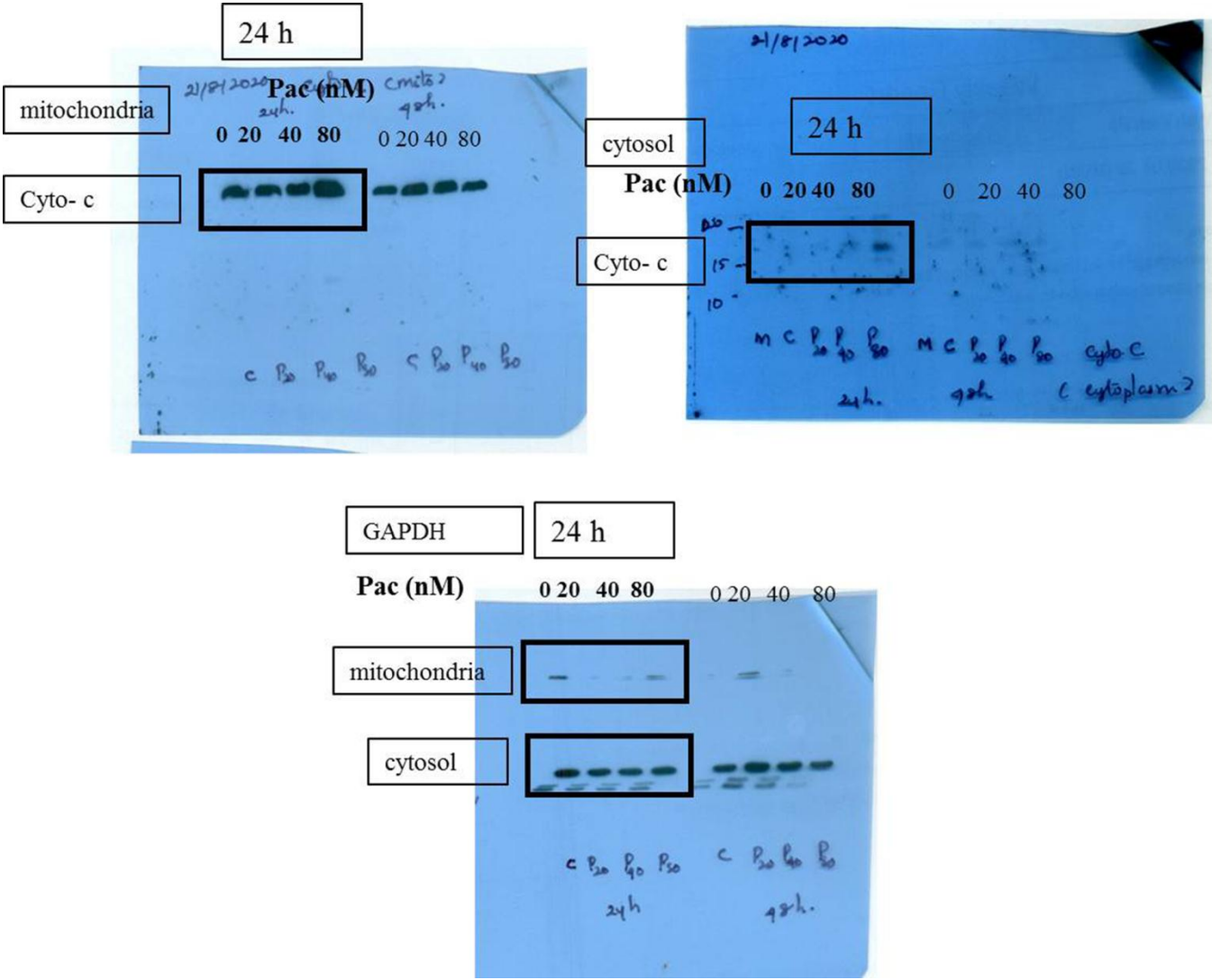


Fig. 3f

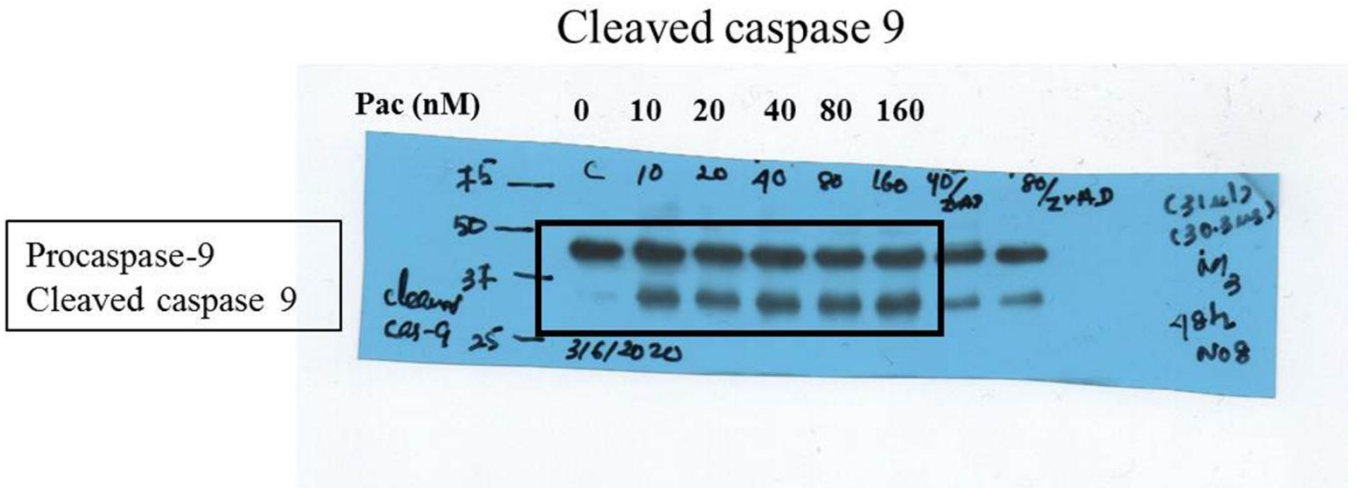


Fig. 3g

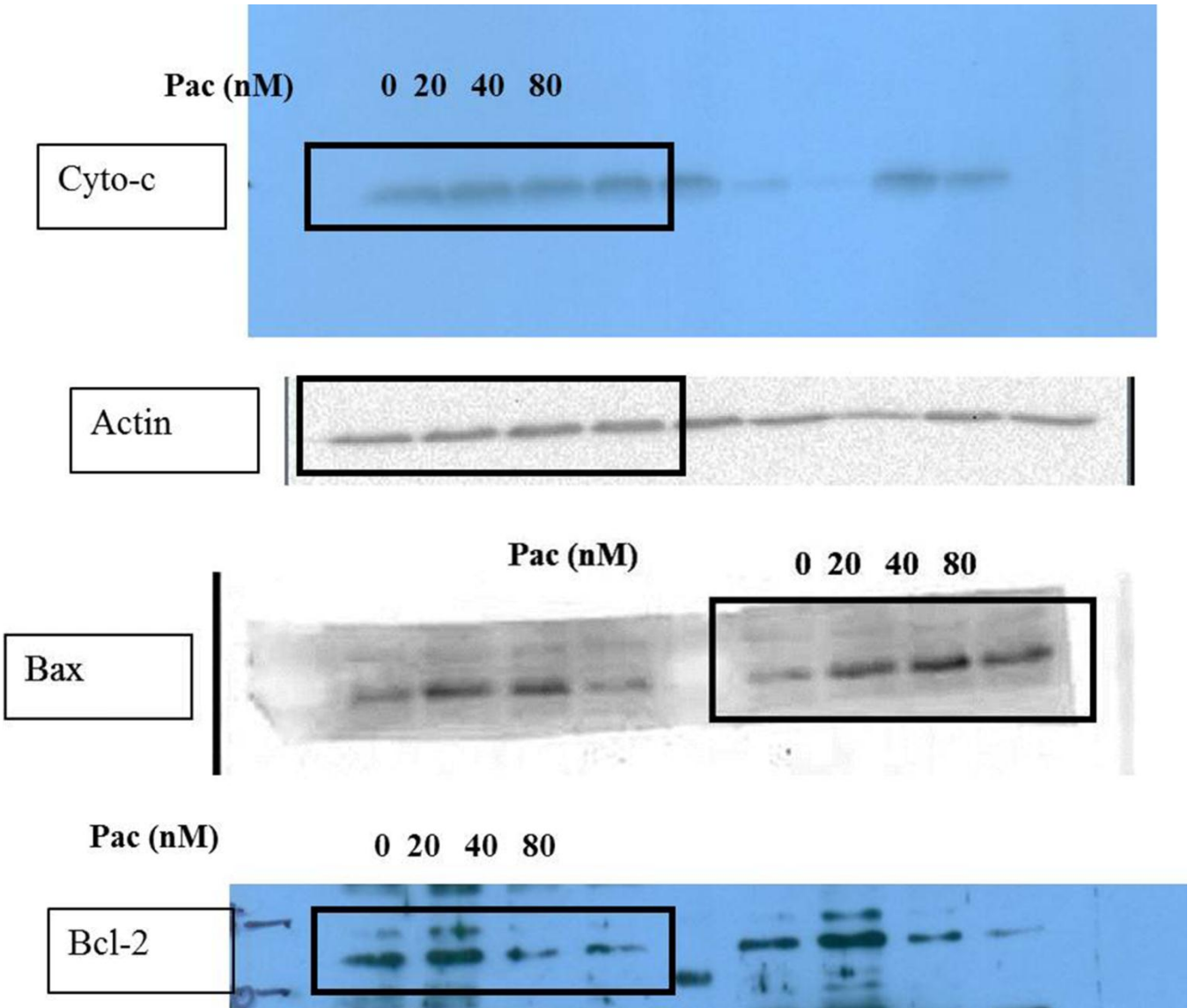
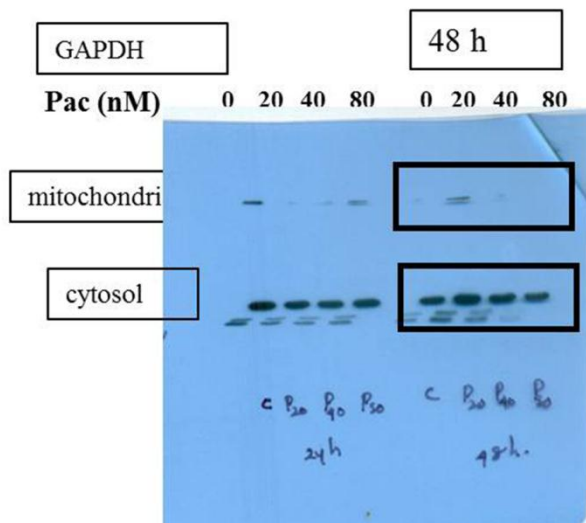
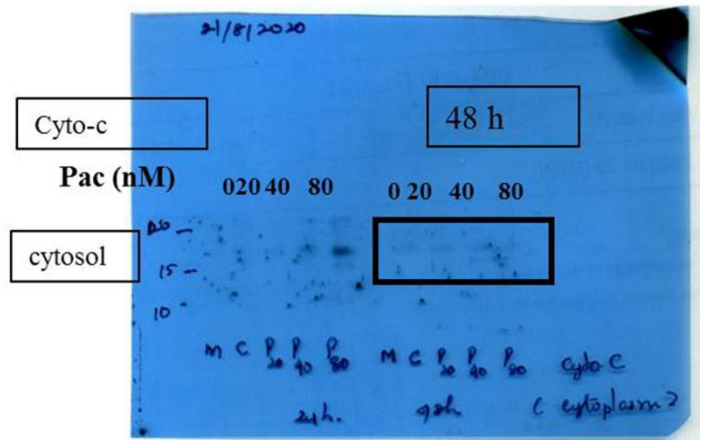
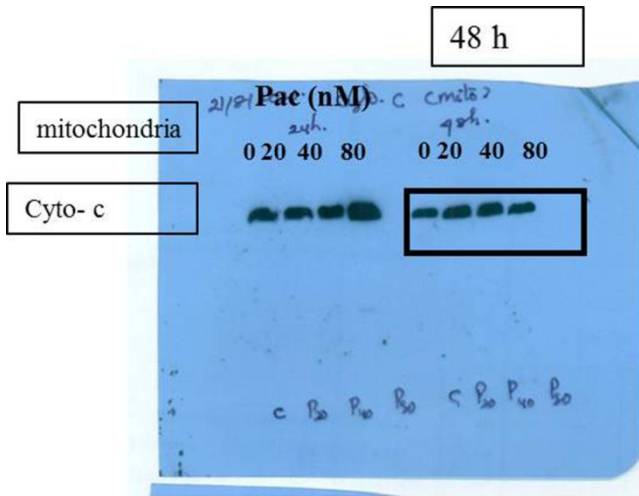


Fig. 3h



Supplementary Fig. C

Fig. C Photographs of the full-length blots described in Figure 4

Fig. 4a

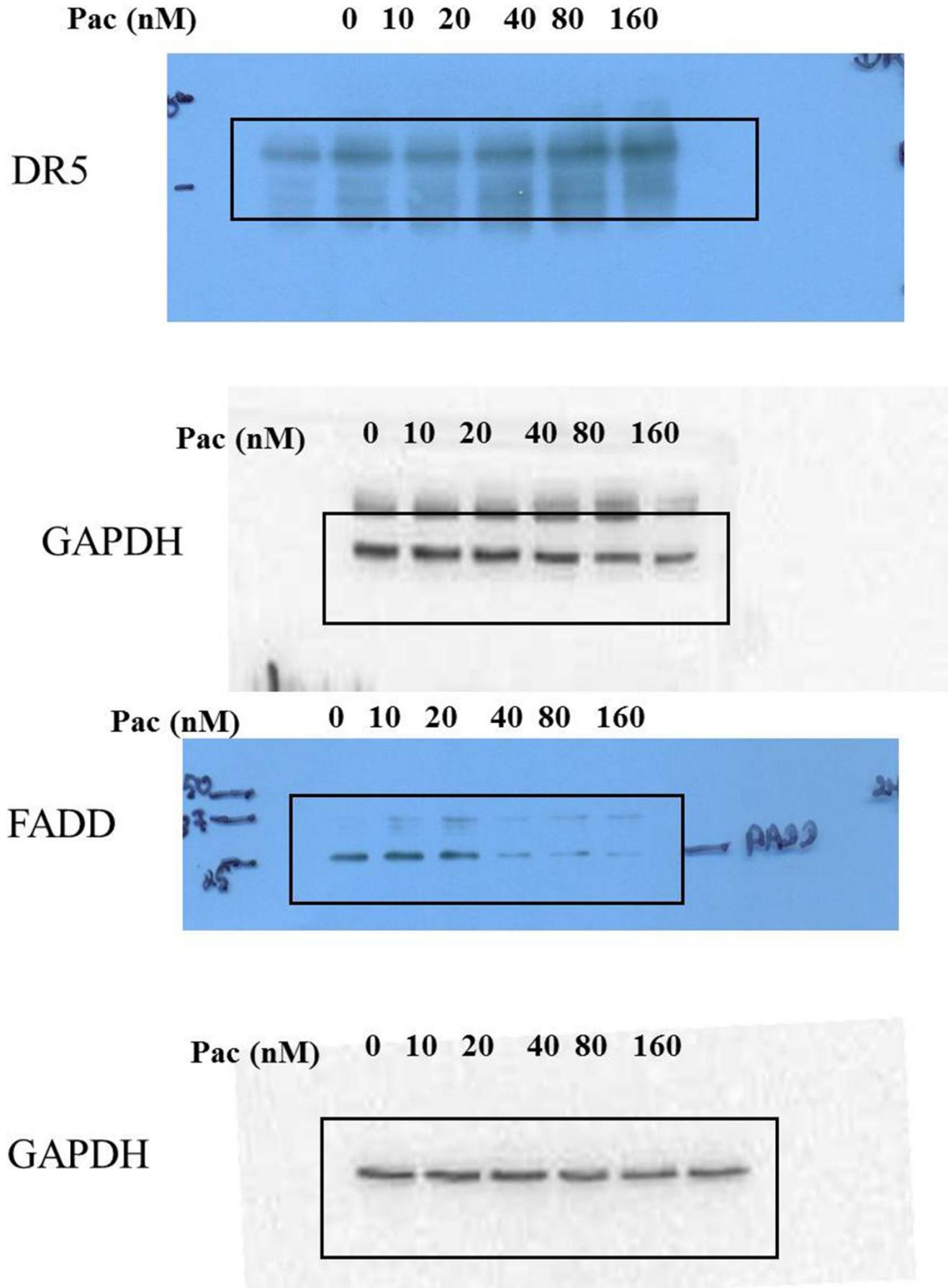


Fig.4b

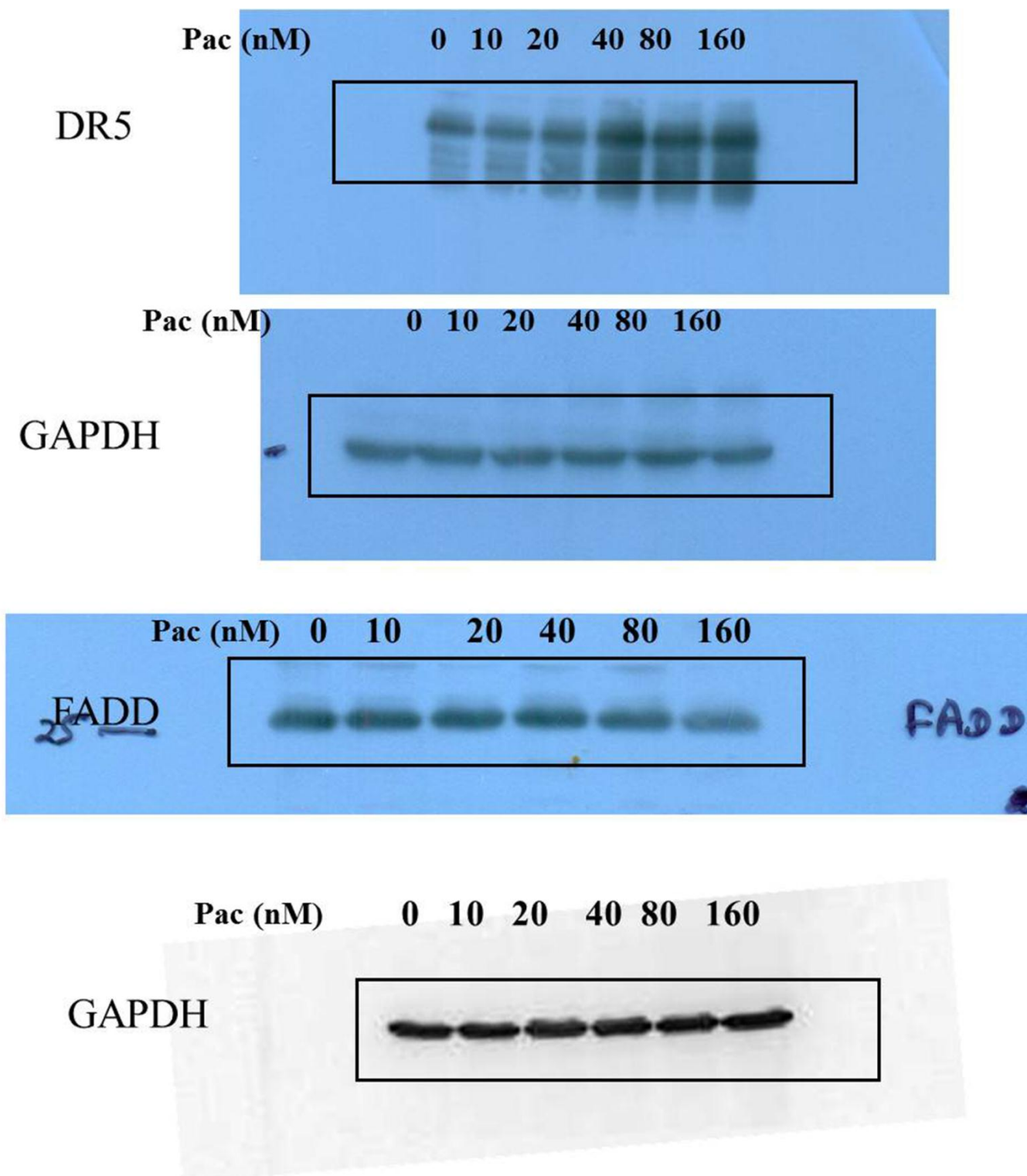
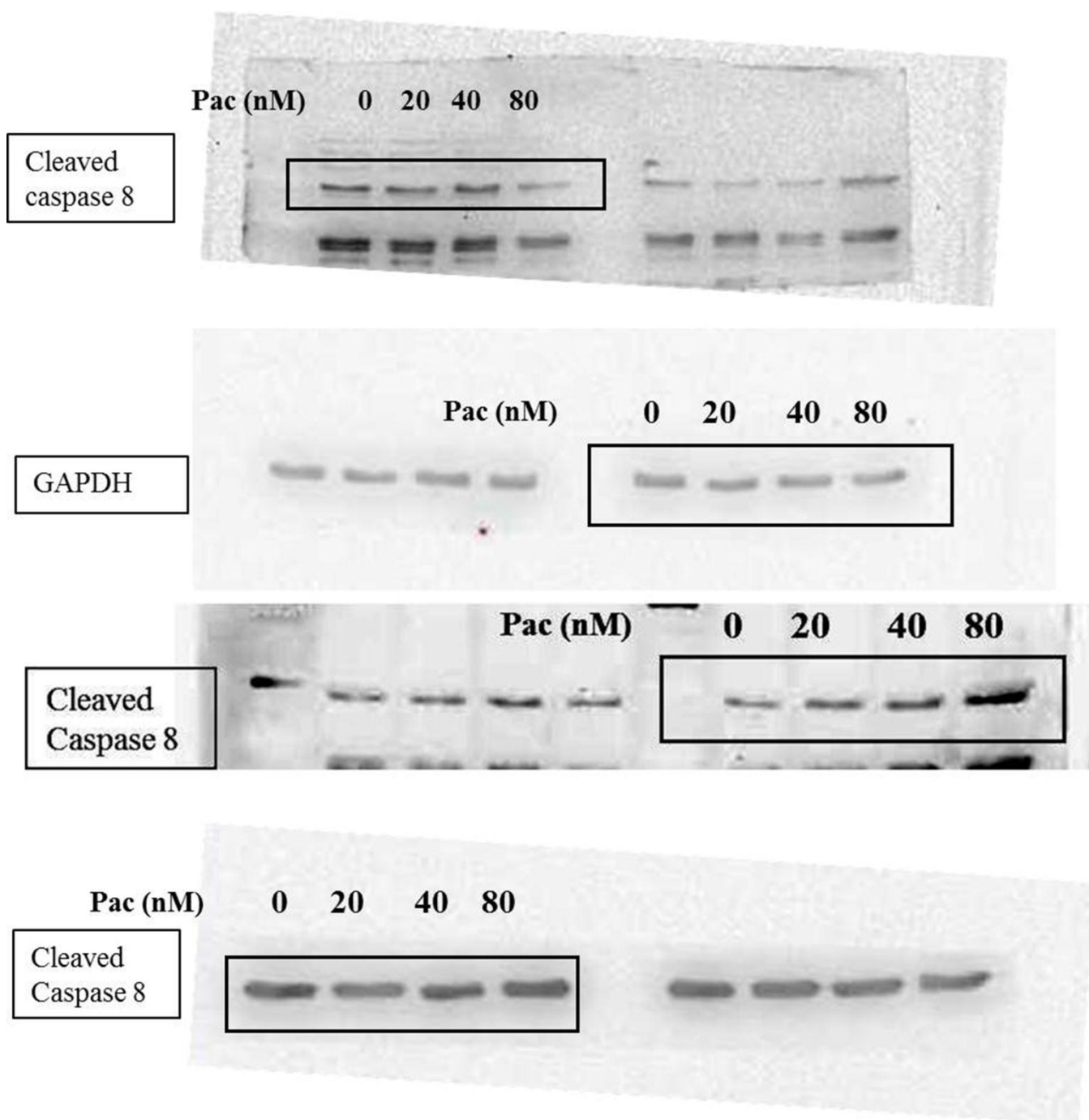


Fig. 4c



Supplementary Fig. D

Fig.D Photographs of the full-length blots described in Figure 5

Fig. 5c

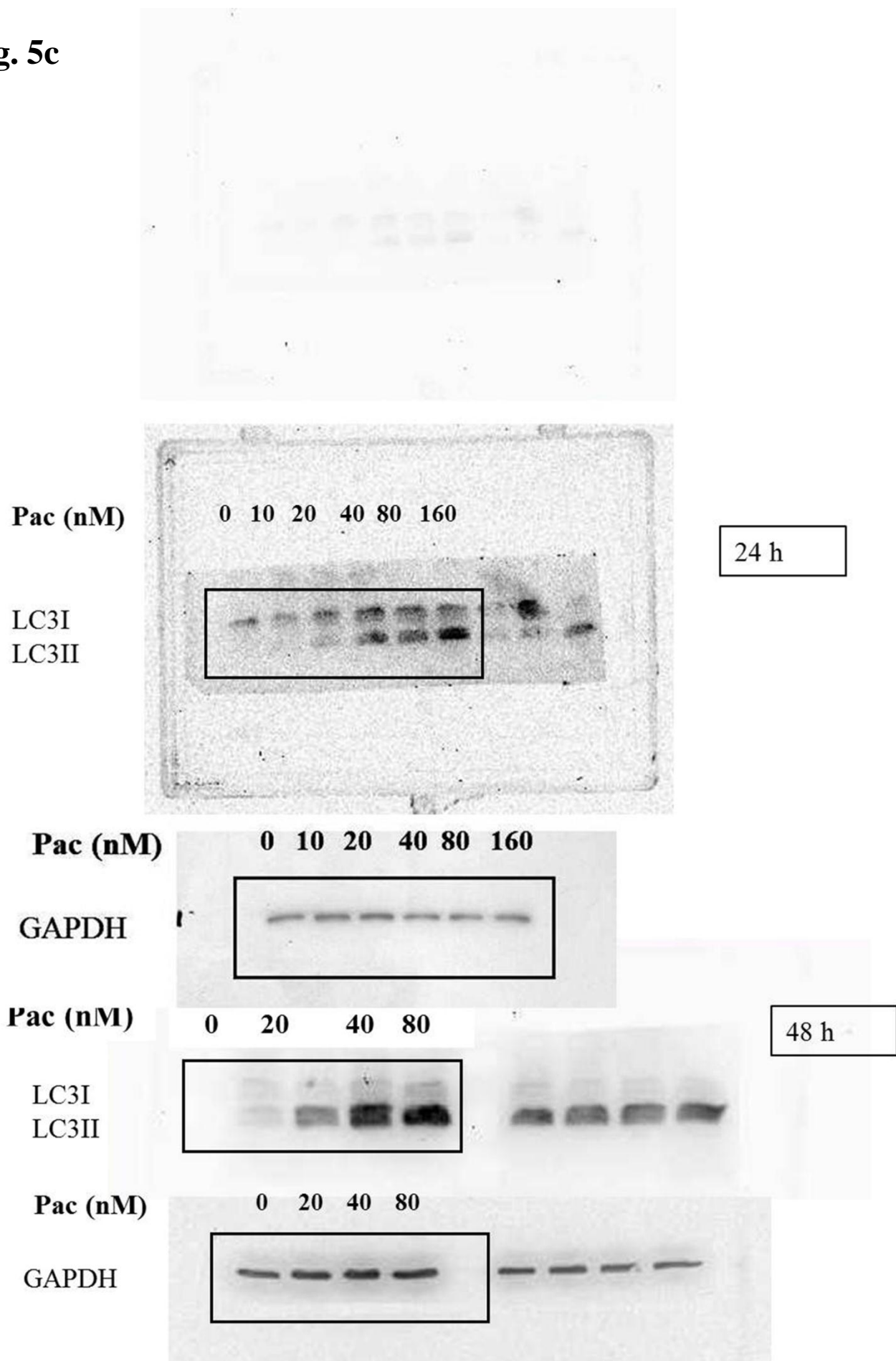
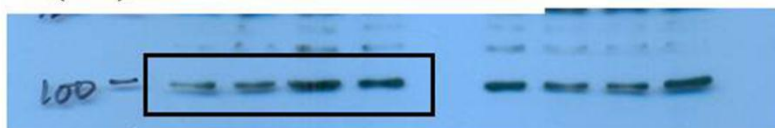


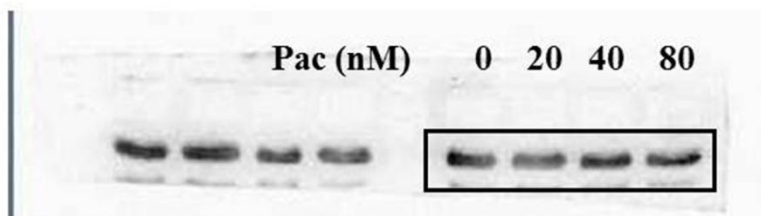
Fig. 5d**Pac (nM) 0 20 40 80**

24 h

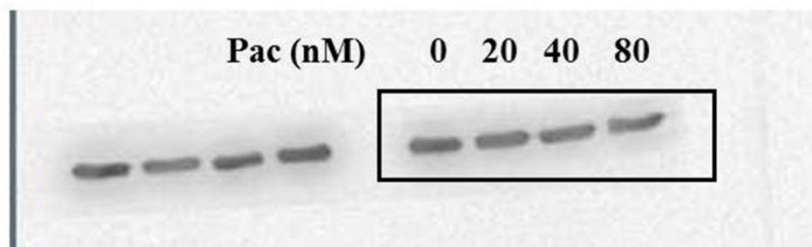
PI3KIII



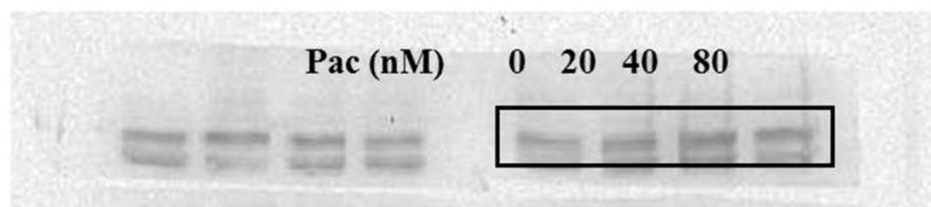
Beclin-1



GAPDH



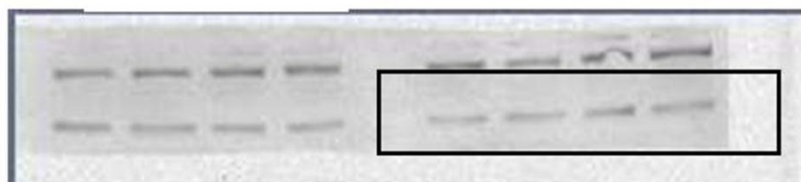
Atg 5



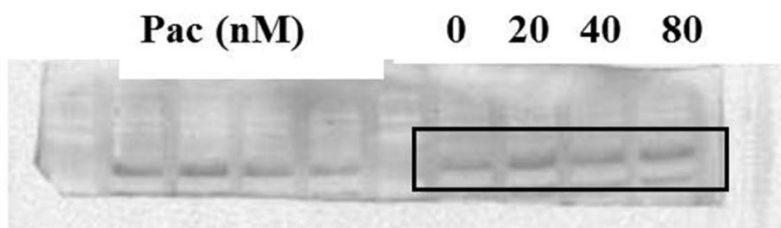
48 h

Pac (nM)**0 20 40 80**

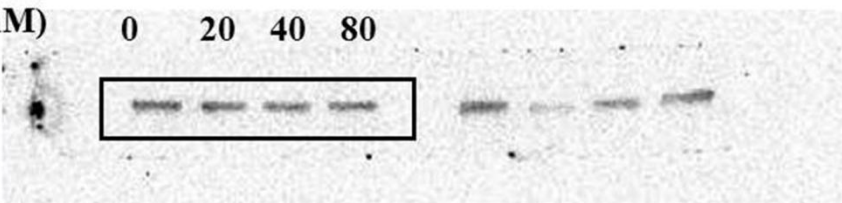
PI3KIII



Beclin1



GAPDH

Pac (nM)**0 20 40 80**

Atg5

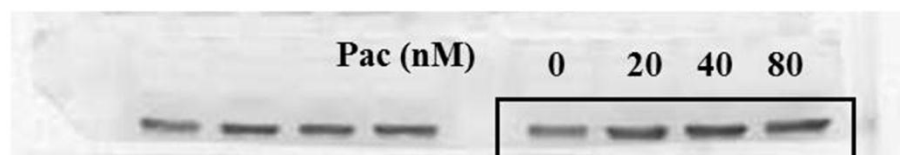


Fig. 5e

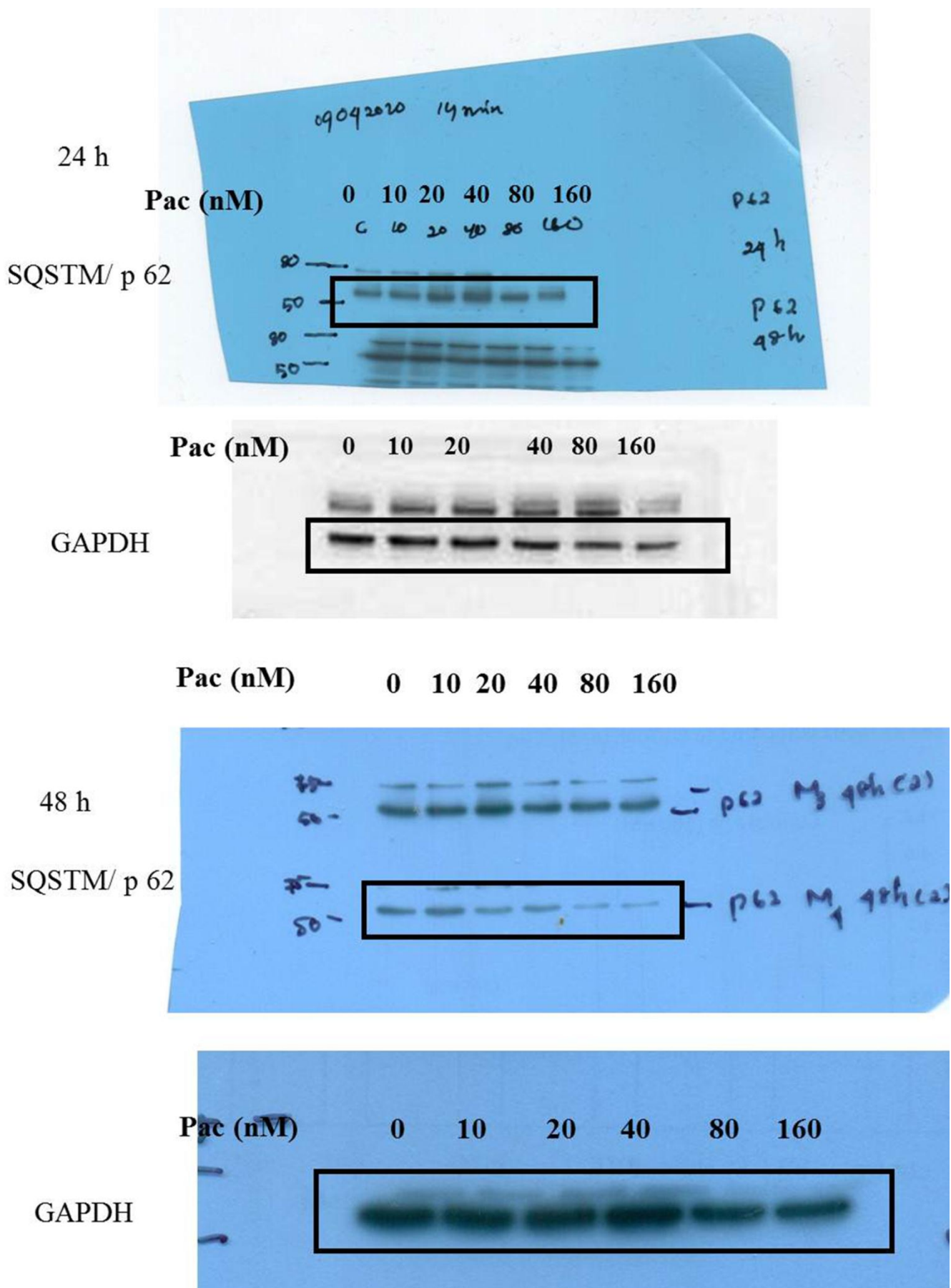


Fig. 5f

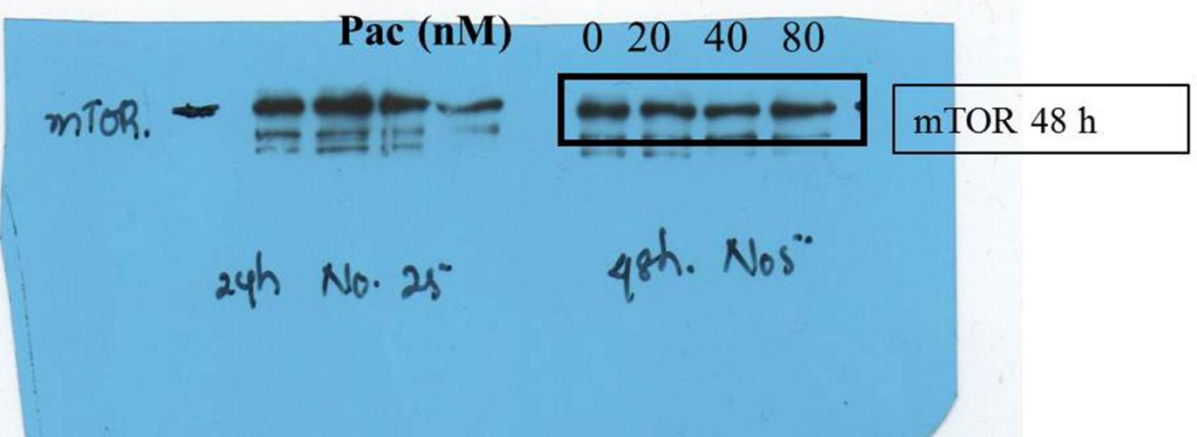
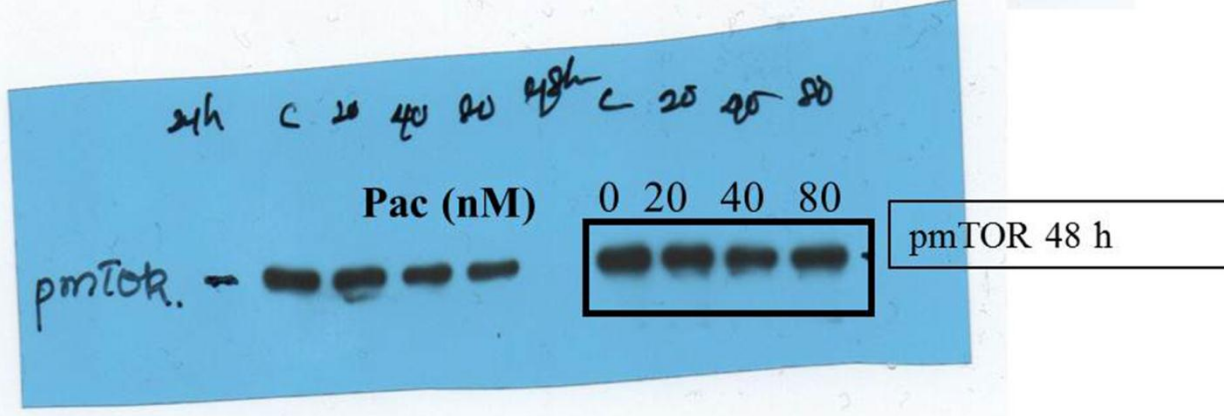
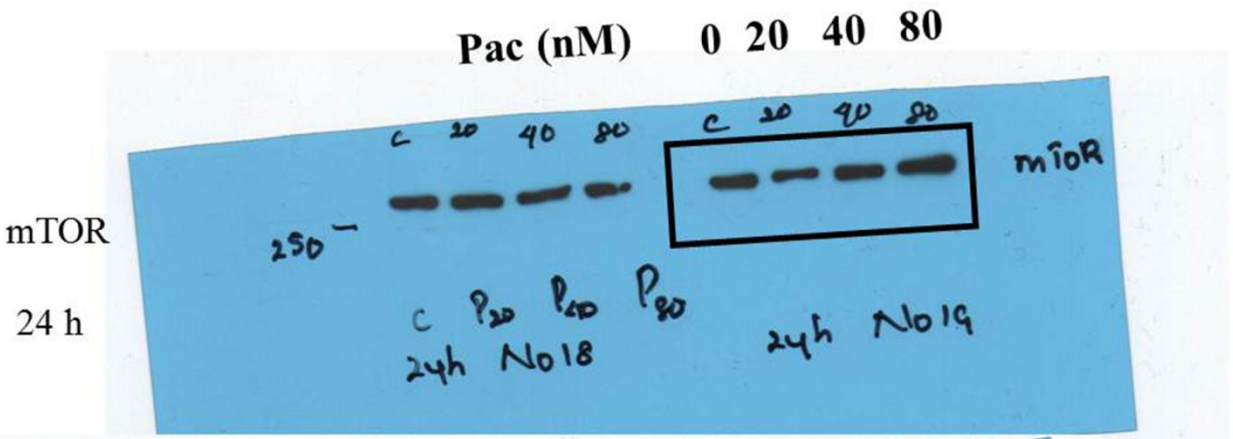
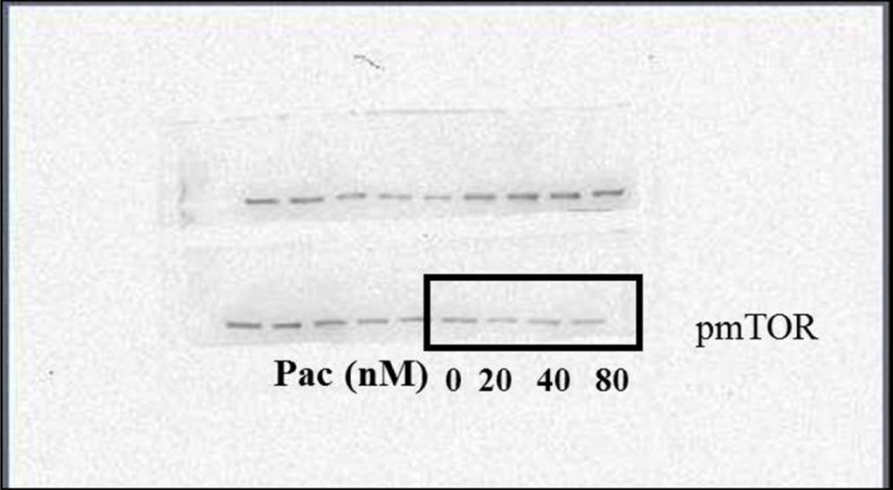
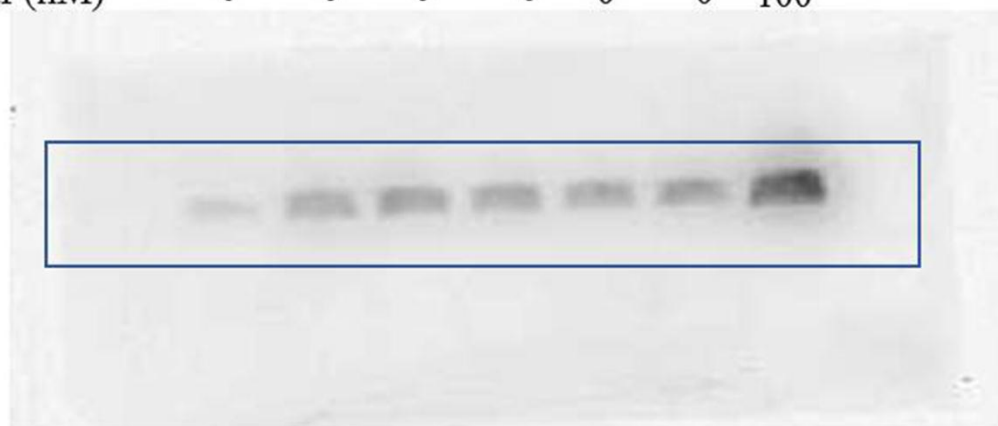


Fig. 5g

| | | | | | | | |
|----------|---|----|----|----|----|----|-----|
| Pac (nM) | 0 | 20 | 40 | 80 | 40 | 40 | 40 |
| 3MA (mM) | 0 | 0 | 0 | 0 | 5 | 0 | 0 |
| Baf (nM) | 0 | 0 | 0 | 0 | 0 | 0 | 100 |

LC3B II



β -Actin

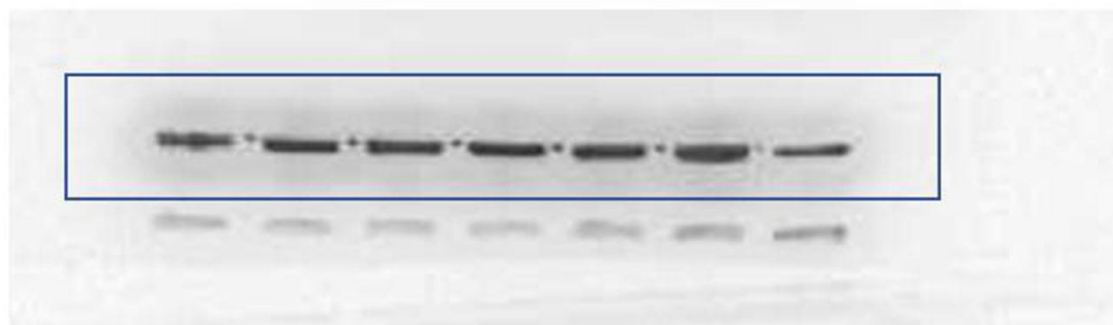


Fig. E Photographs of the full-length blots described in Figure 6

Fig. 6b

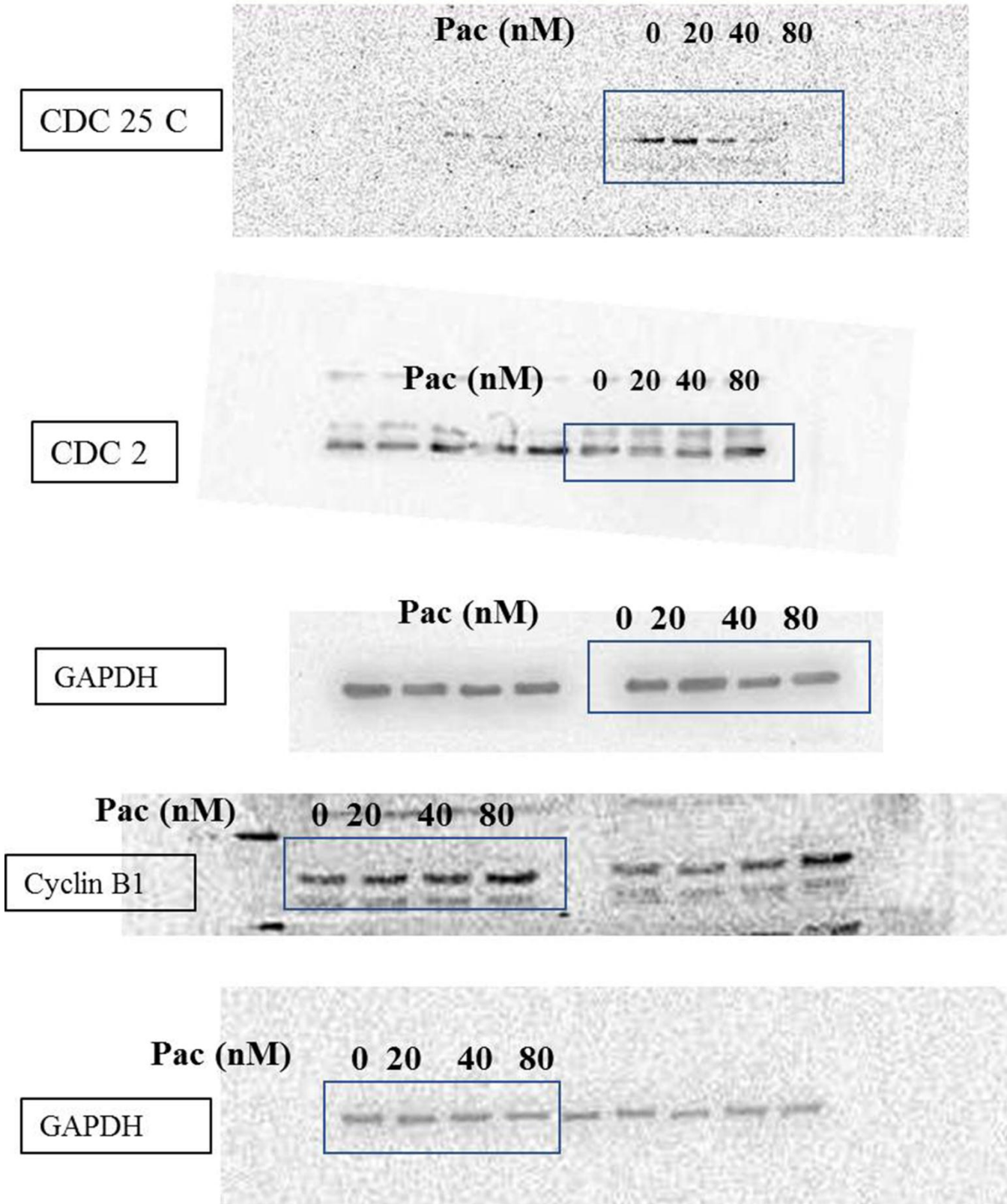
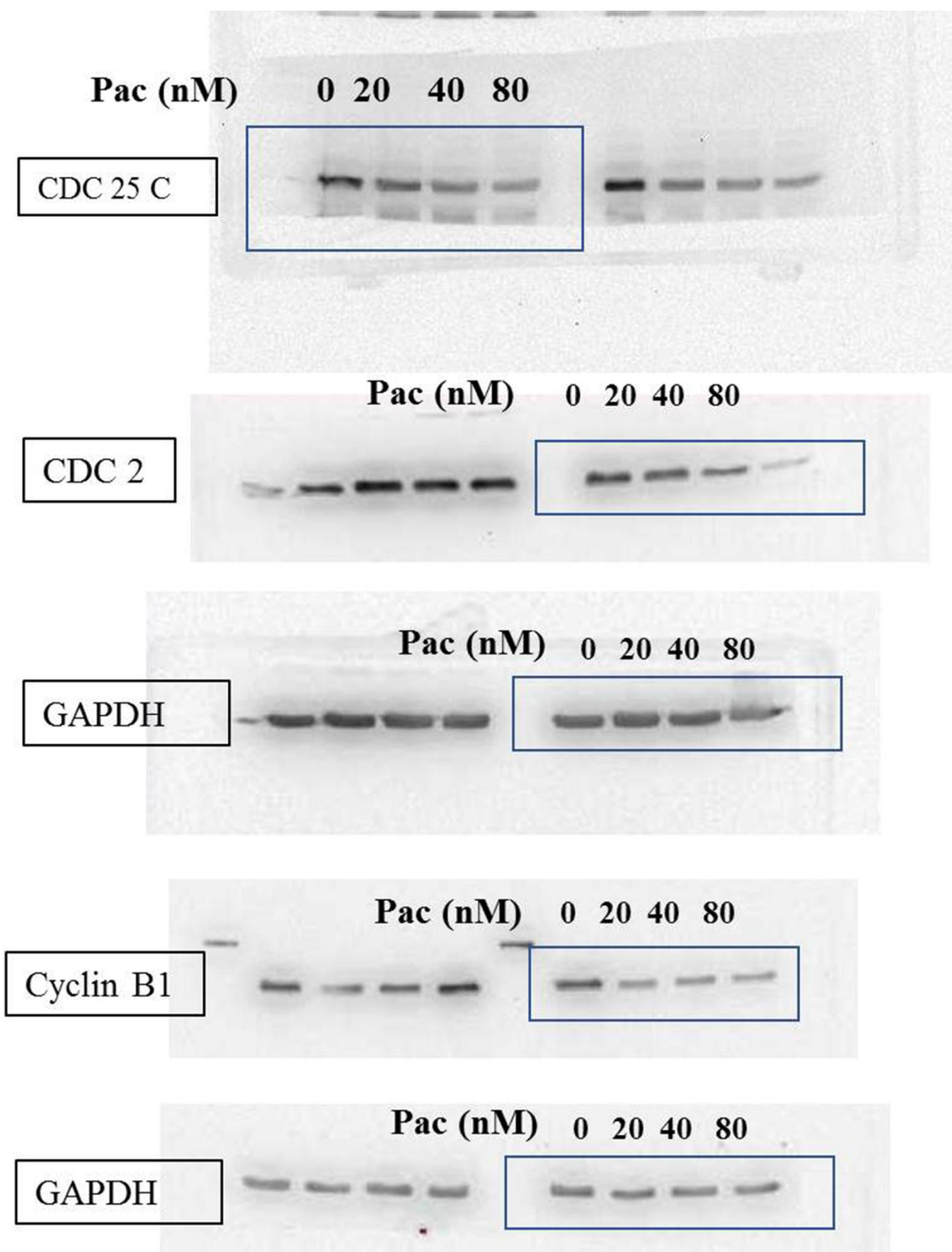


Fig. 6d



Supplementary Fig. F

Fig. F Photographs of the full-length blots described in Figure 7

Fig. 7f

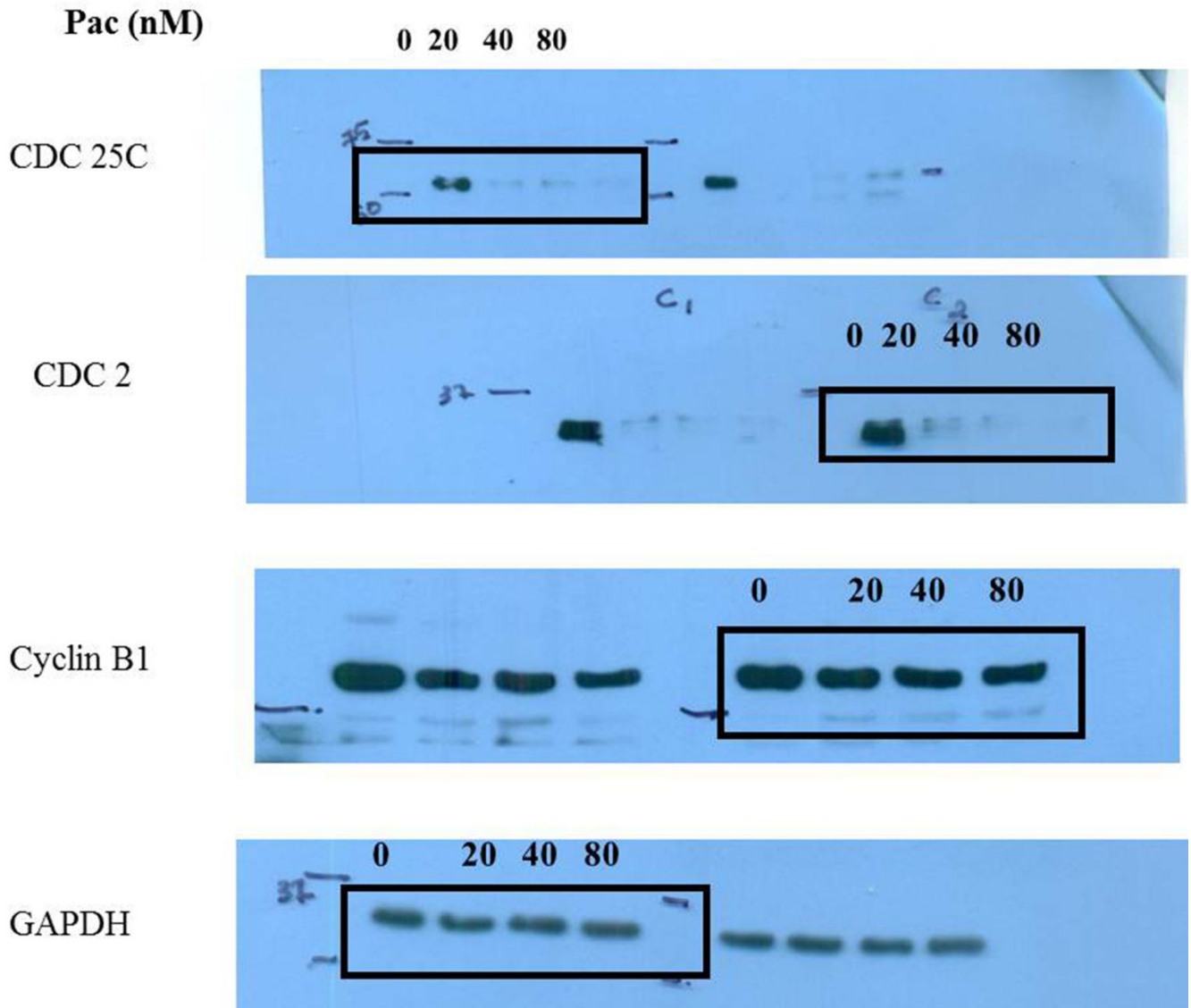
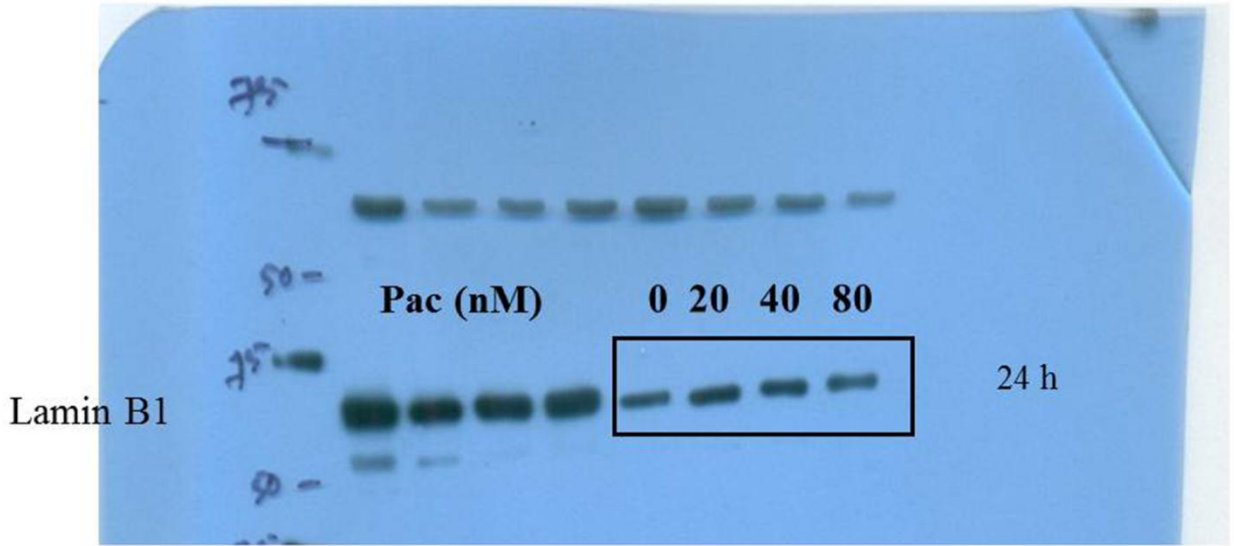


Fig. 7g

Lamin B1



Pac (nM) 0 20 40 80

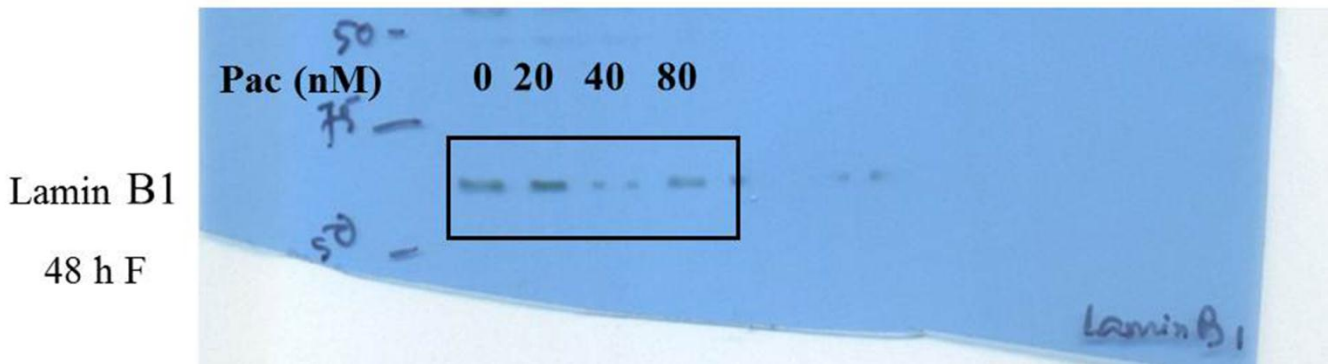
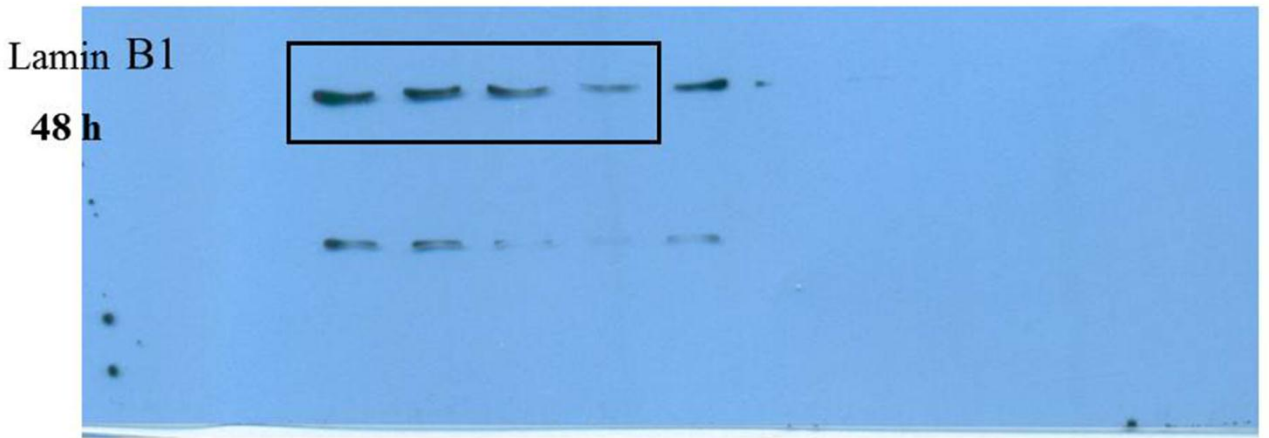


Fig. 7h

