

**The effect of paclitaxel on apoptosis, autophagy and mitotic catastrophe in AGS cells**

**Tin Myo KHING, Won Seok CHOI, Dong Min KIM, Wah Wah PO, Wynn THEIN, Chang Yell SHIN and Uy Dong SOHN\***

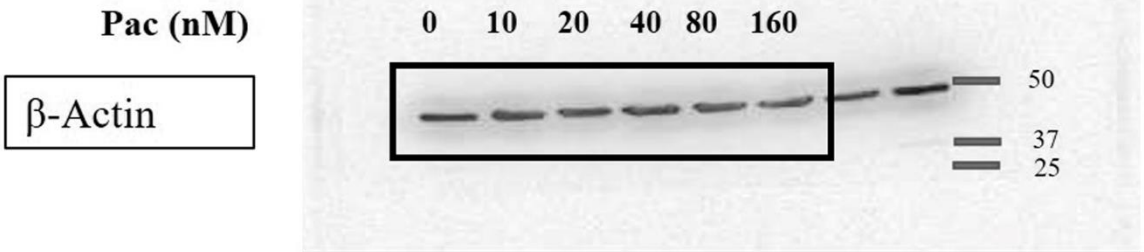
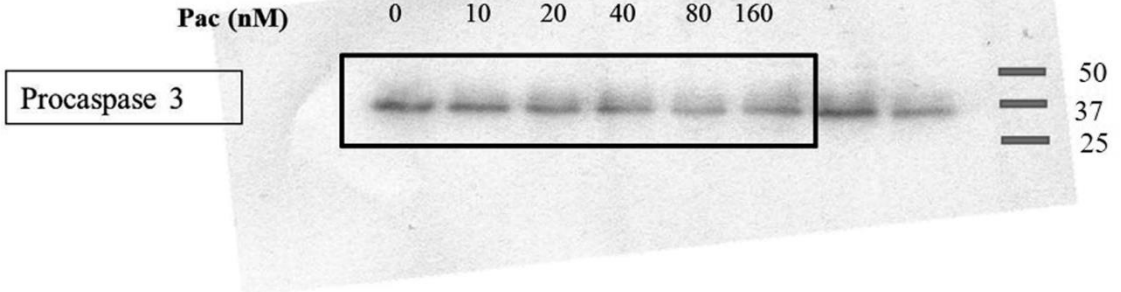
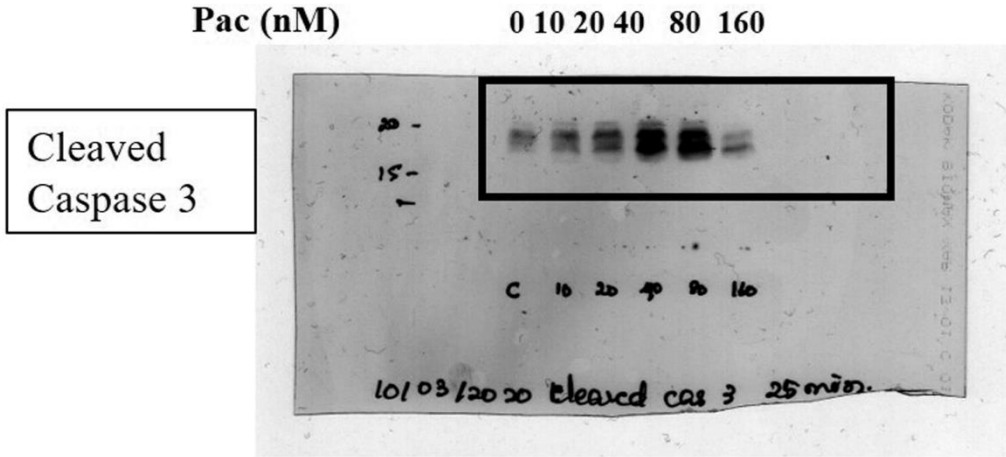
Laboratory of Signaling and Pharmacological Activity, Department of Pharmacology, College of Pharmacy, Chung-Ang University, Seoul, Republic of Korea

**\*Corresponding author:** Uy Dong Sohn, Professor, Ph.D., Department of Pharmacology, College of Pharmacy, Chung-Ang University, Seoul, 06974, Republic of Korea. Tel.: +82 28205614, Fax: 011 +8228268752, e-mail: [udsohn@cau.ac.kr](mailto:udsohn@cau.ac.kr)

Supplementary Fig. A

Fig. A Photographs of the full-length blots described in Figure 2

Fig. 2b



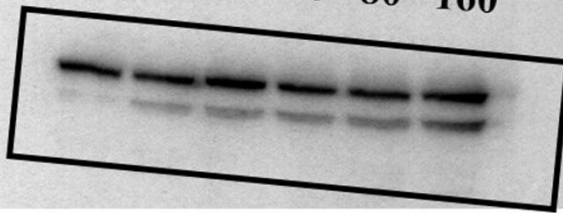
2/6/2020

c P<sub>10</sub> P<sub>20</sub> P<sub>40</sub> P<sub>80</sub> P<sub>160</sub> PARP  
5 min.

Pac (nM)

0 10 20 40 80 160

PARP  
Cleaved PARP



150  
100  
75  
50

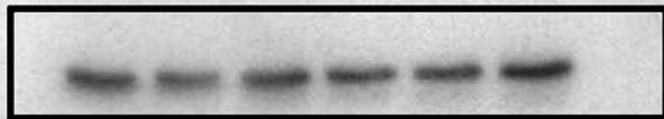
m  
b

m<sub>3</sub>

Pac (nM)

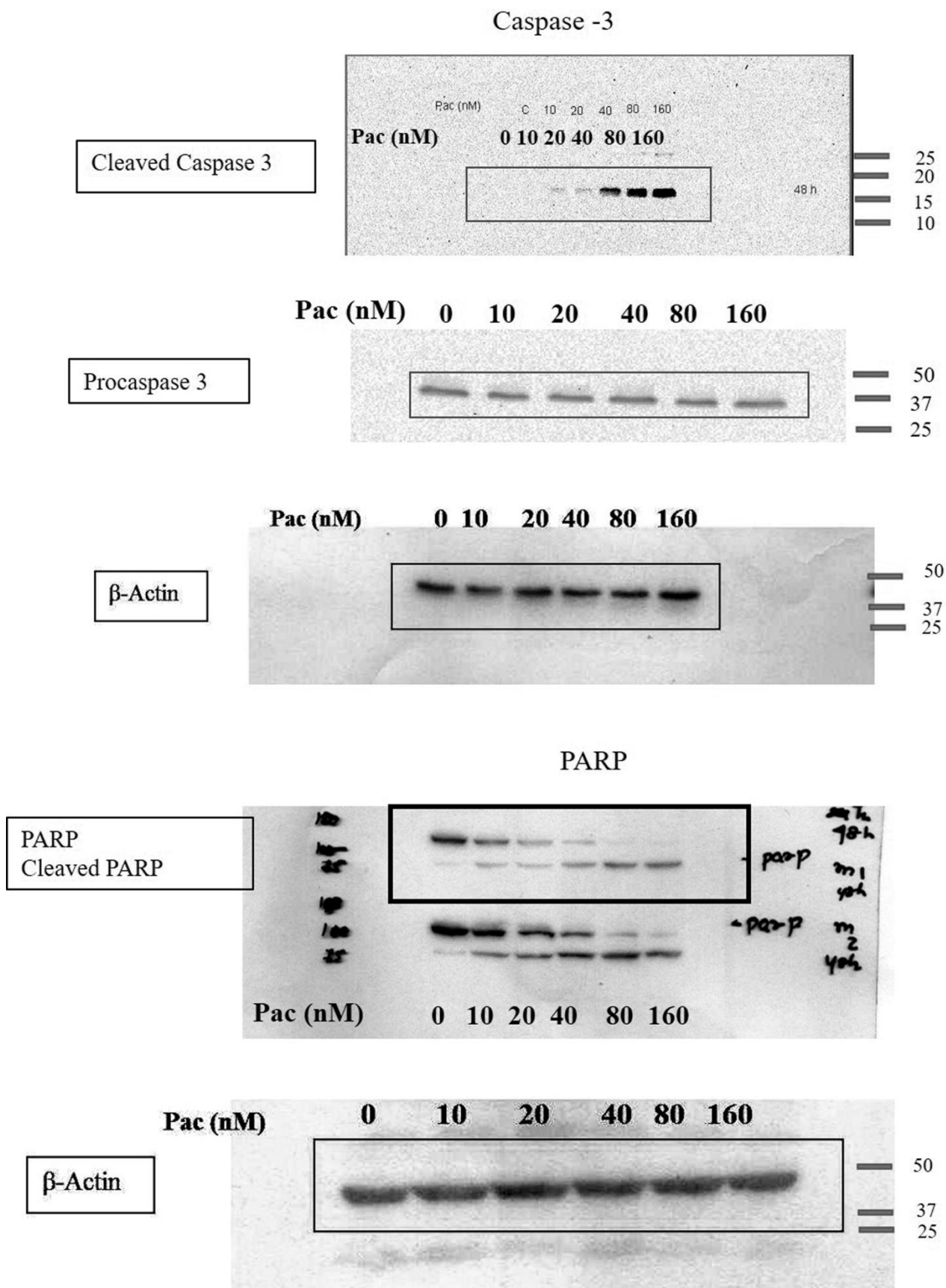
0 10 20 40 80 160

$\beta$ -Actin

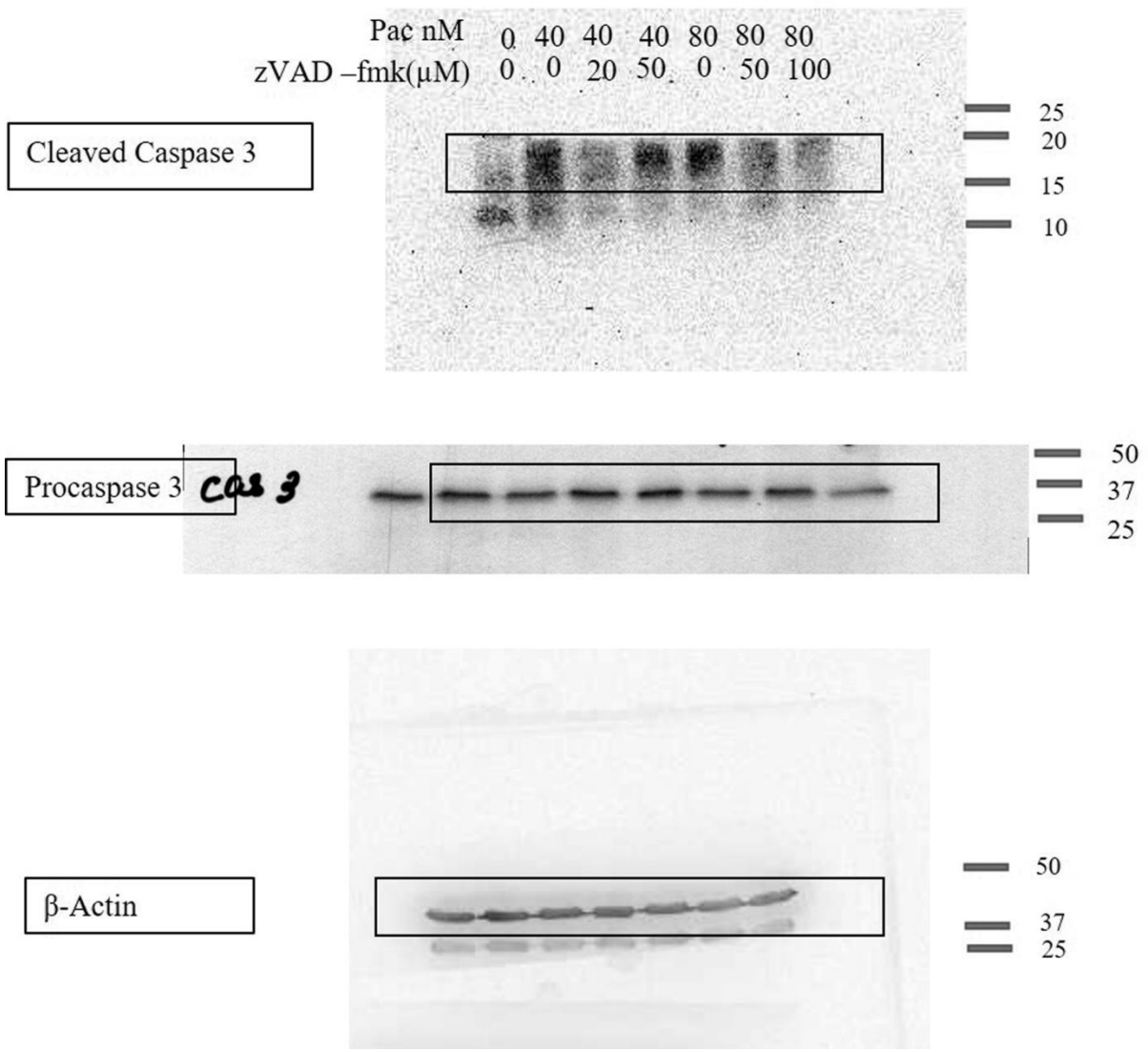


50  
37  
25

**Fig.2d**



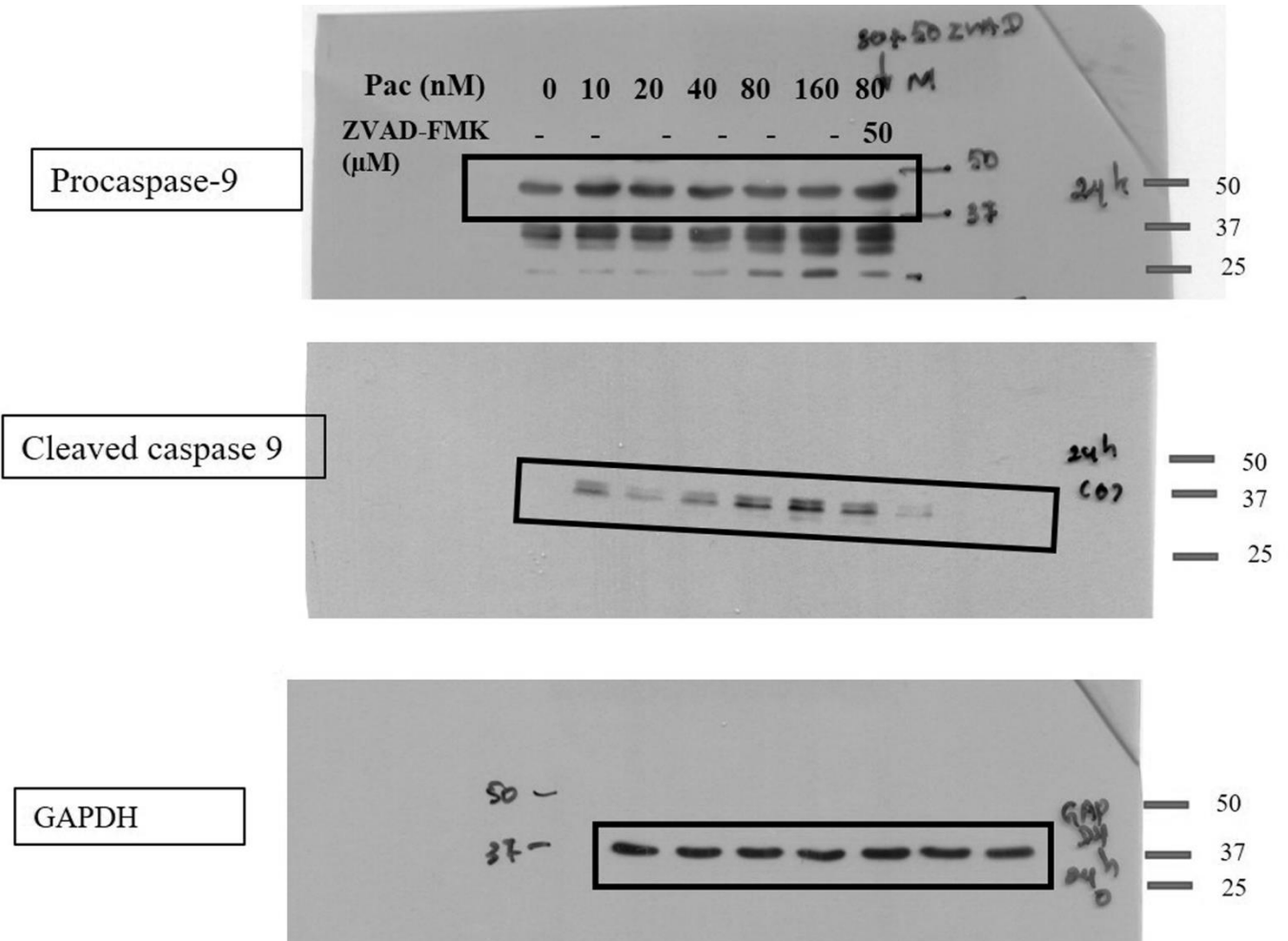
**Fig. 2e**



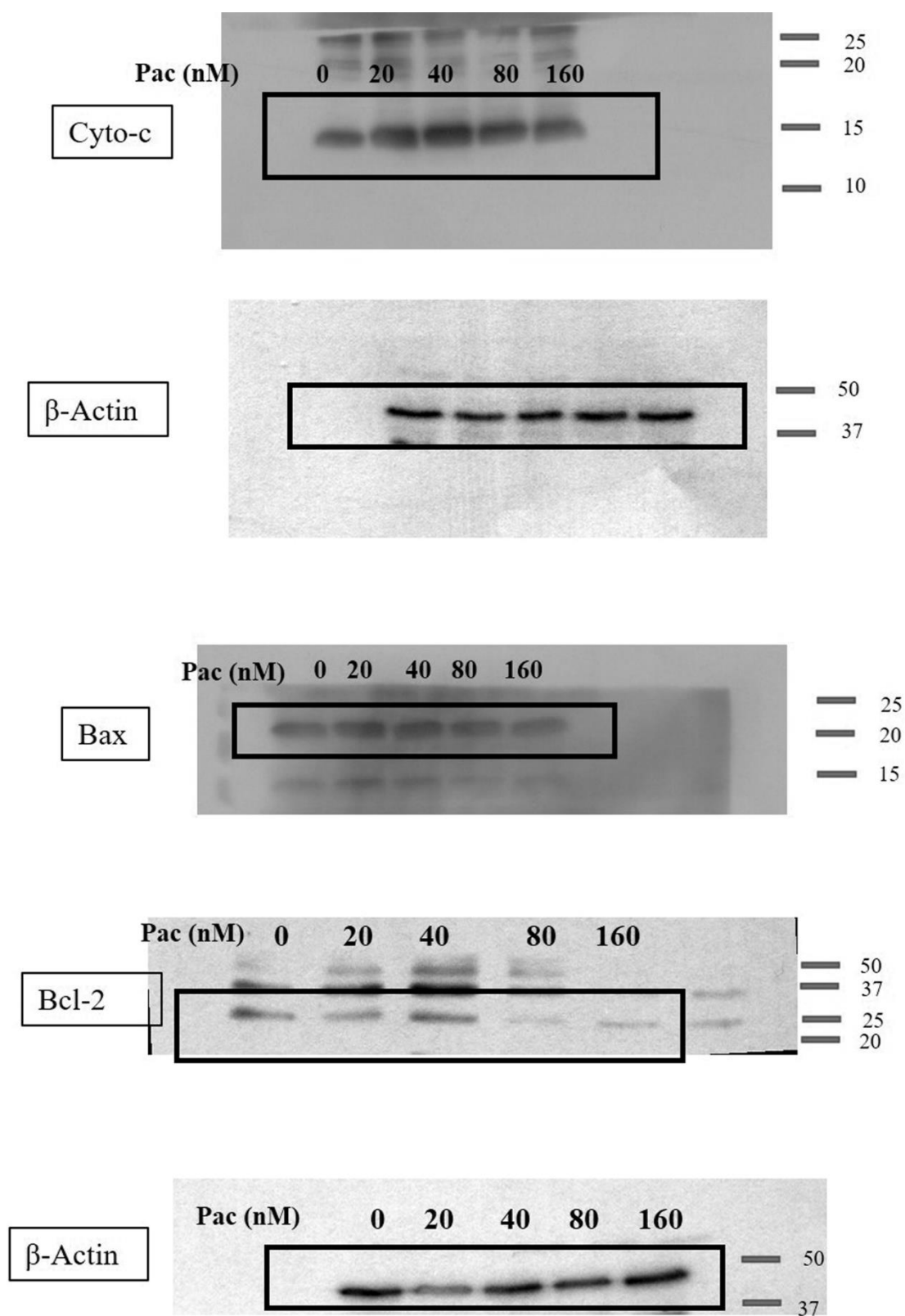
# Supplementary Fig. B

**Fig. B** Photographs of the full-length blots described in Figure 3

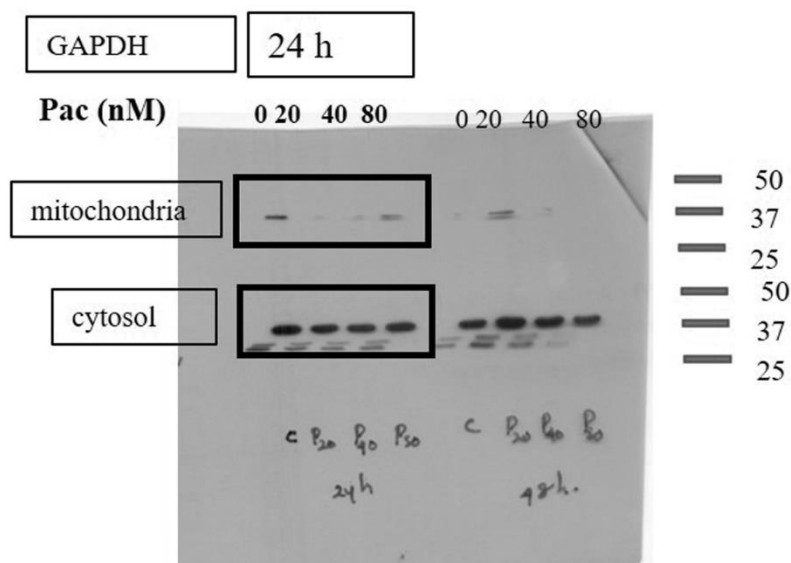
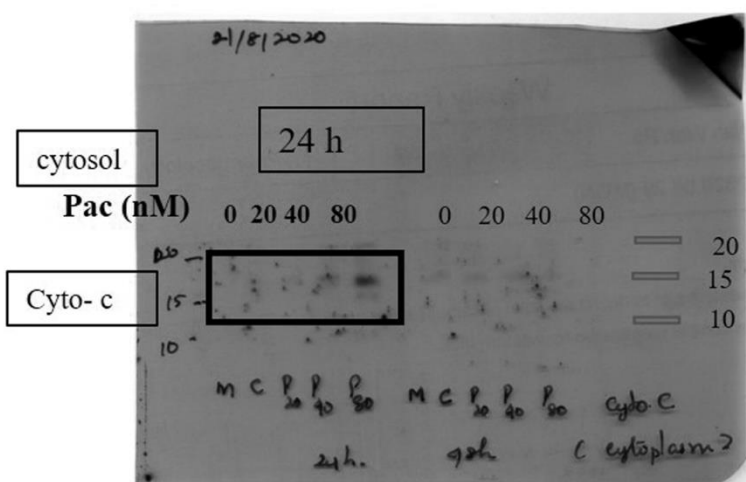
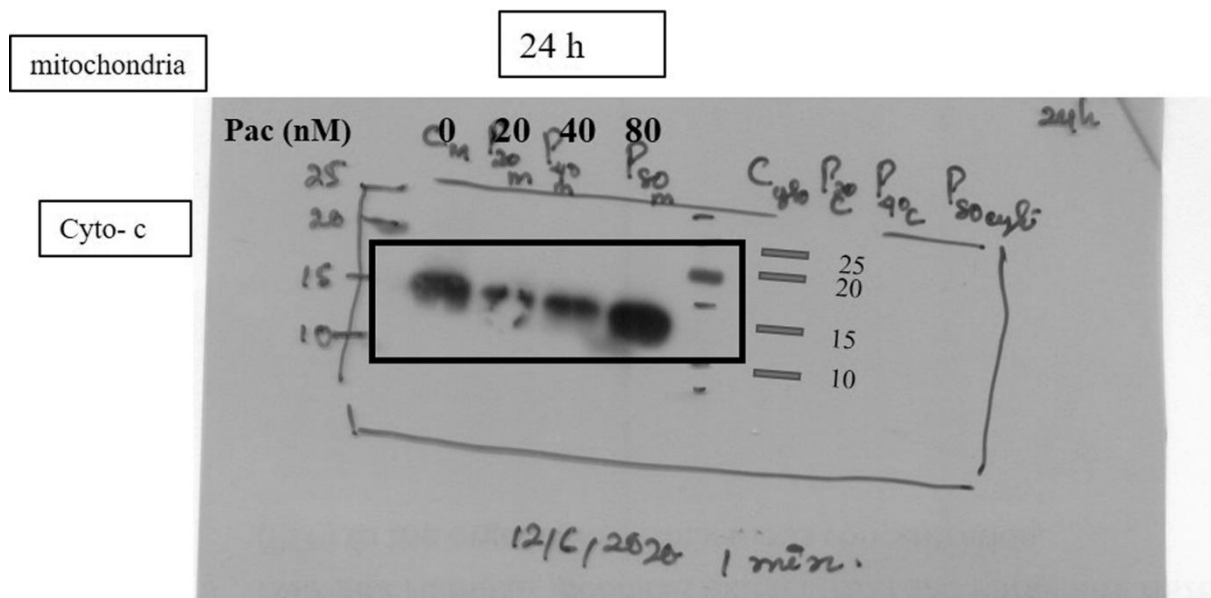
**Fig. 3b**



**Fig. 3c**

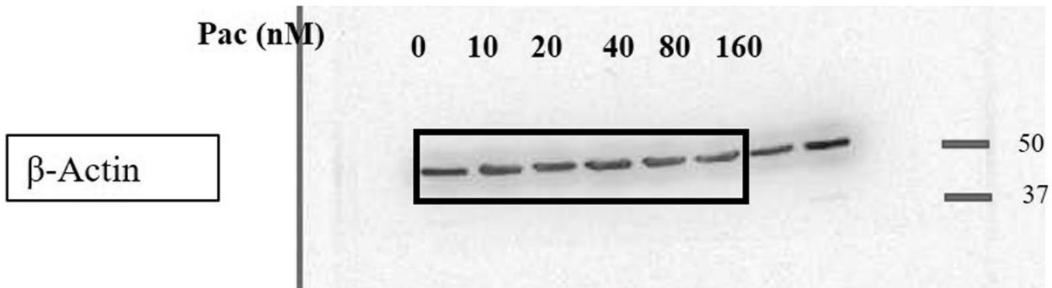
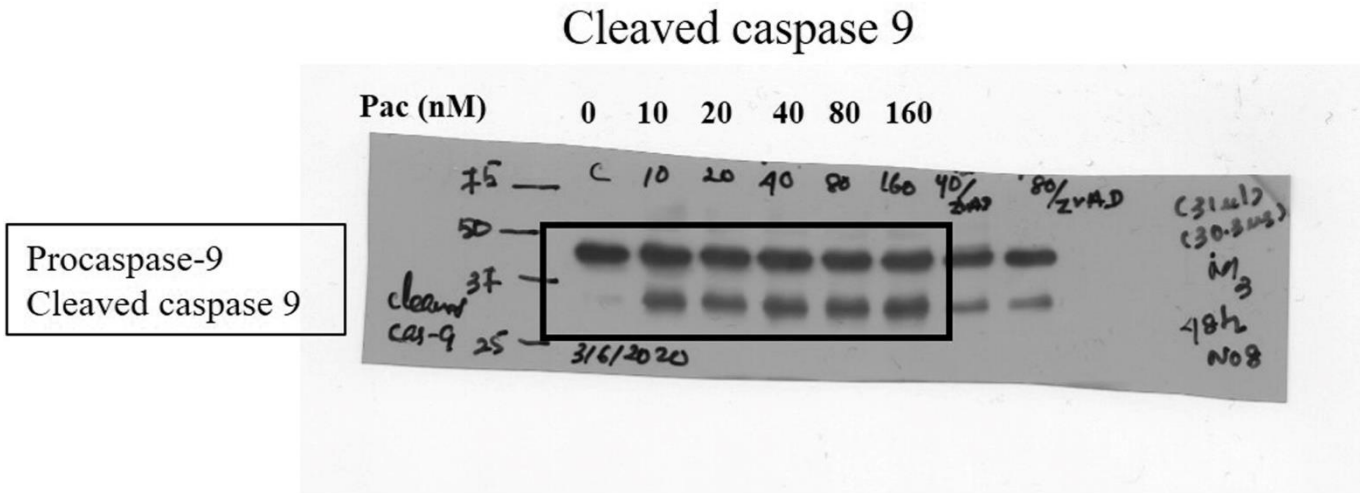


**Fig.3d**

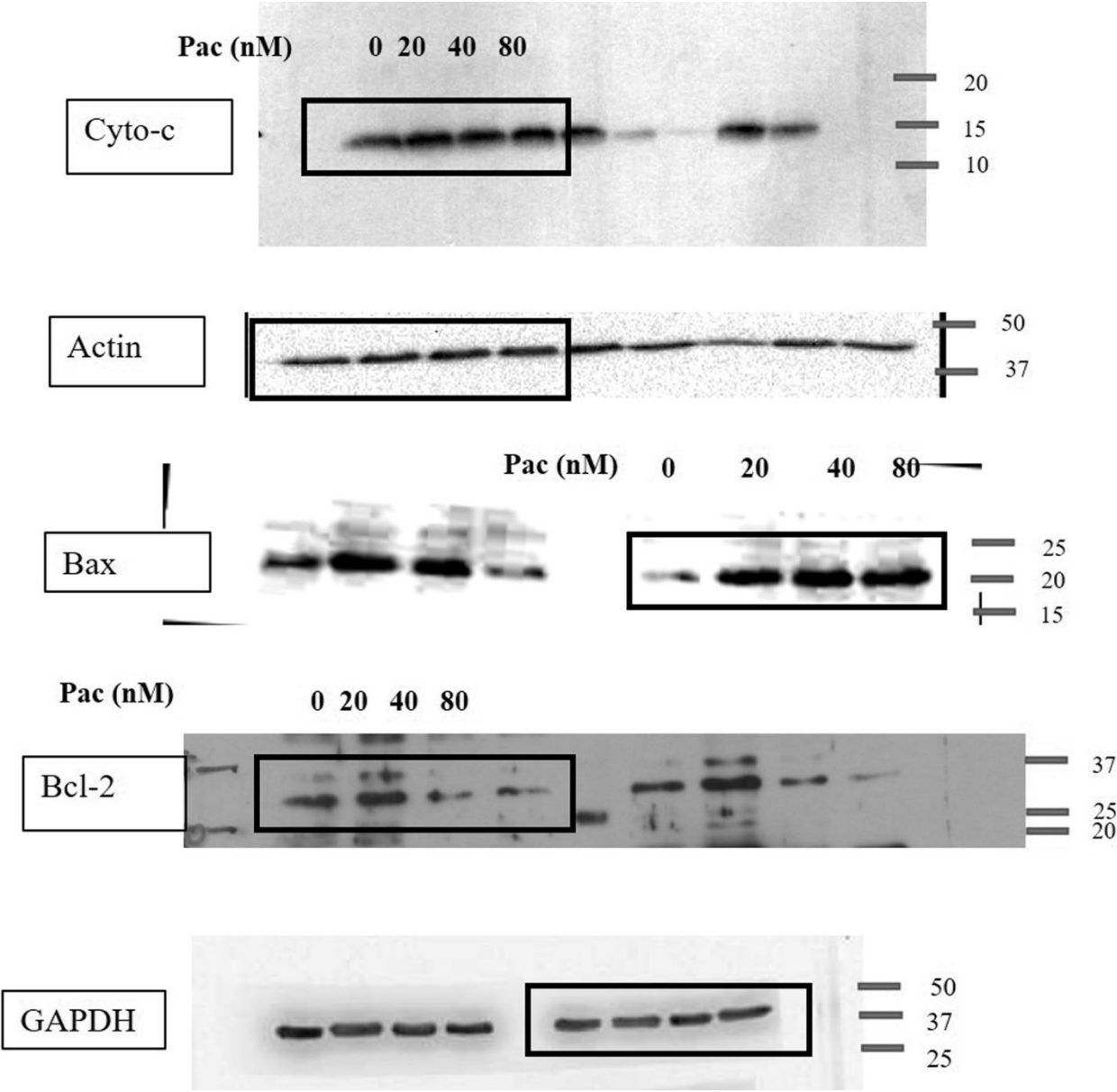




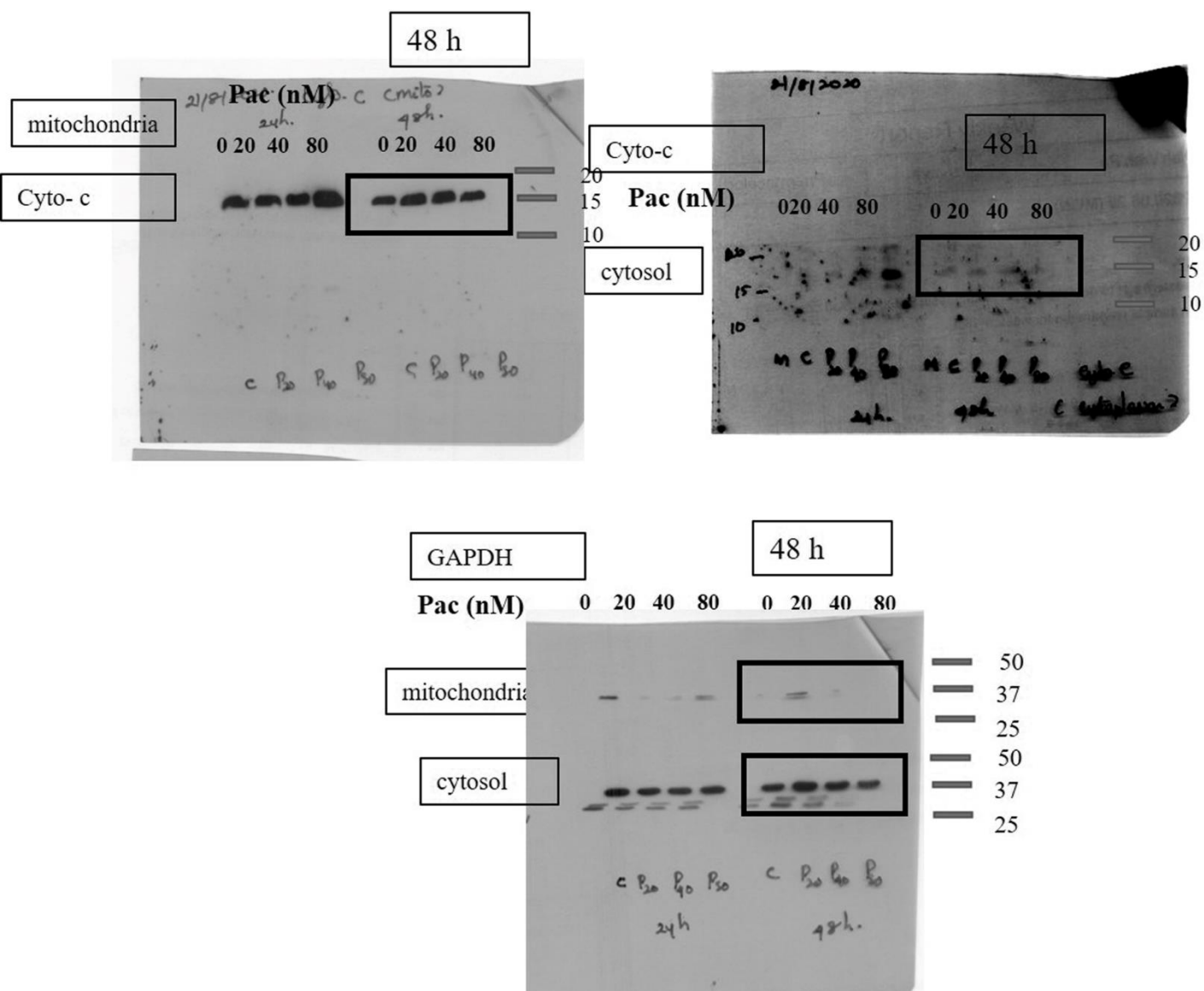
**Fig. 3f**



**Fig. 3g**



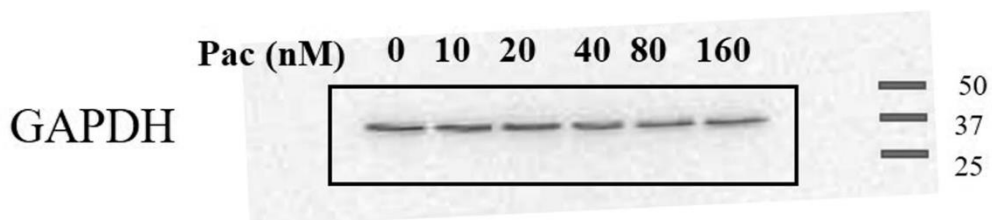
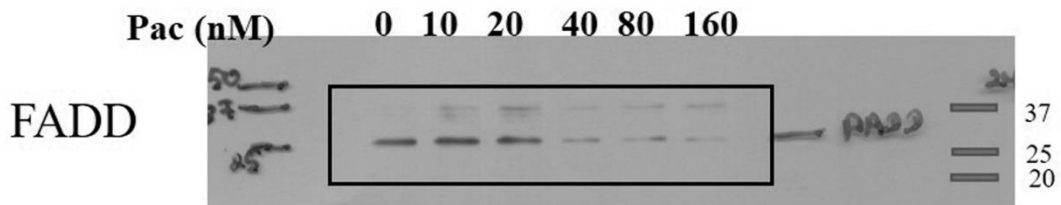
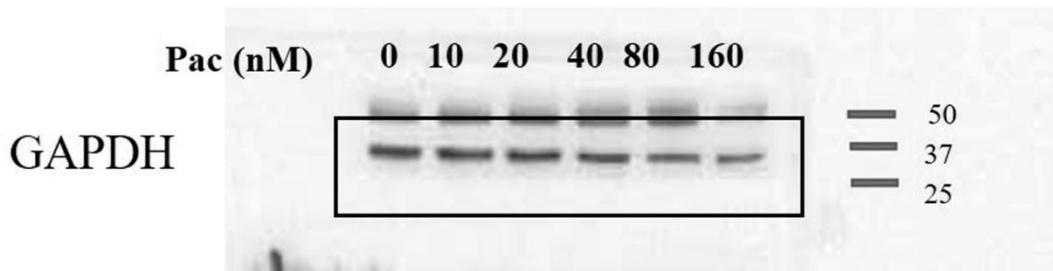
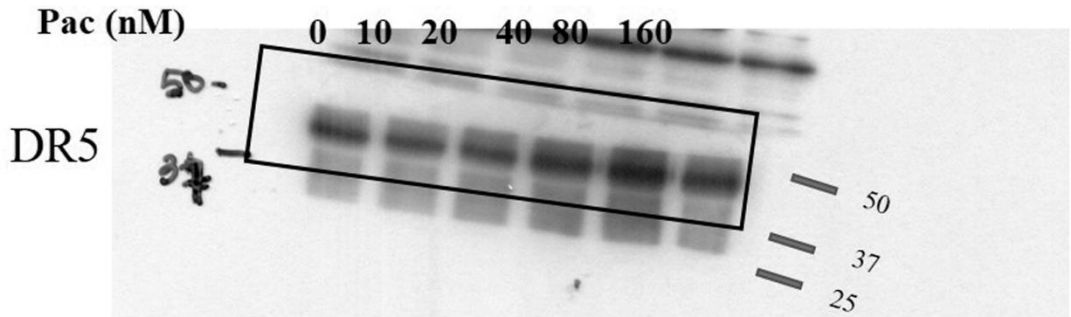
**Fig. 3h**



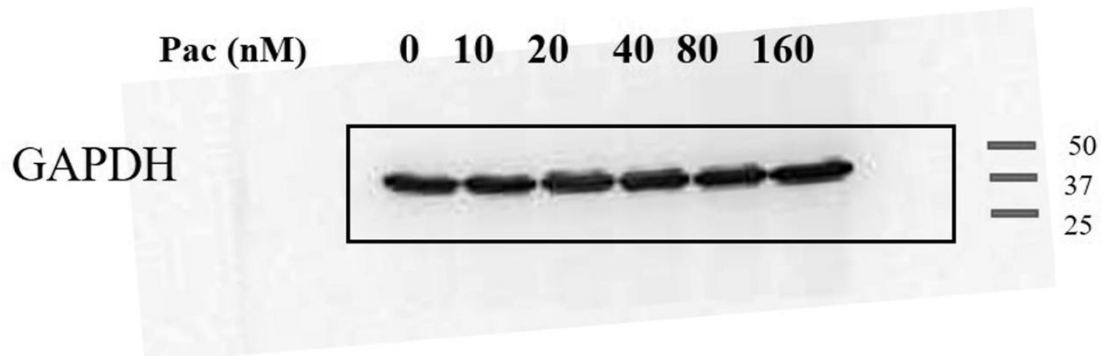
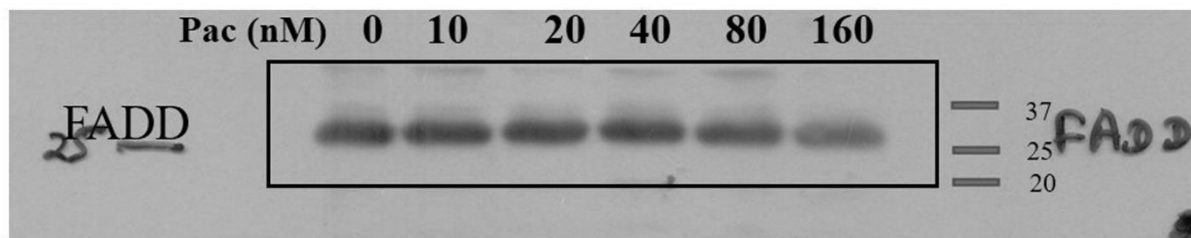
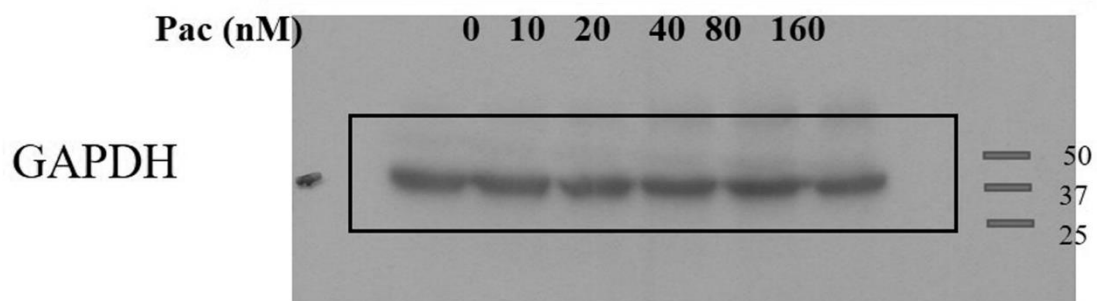
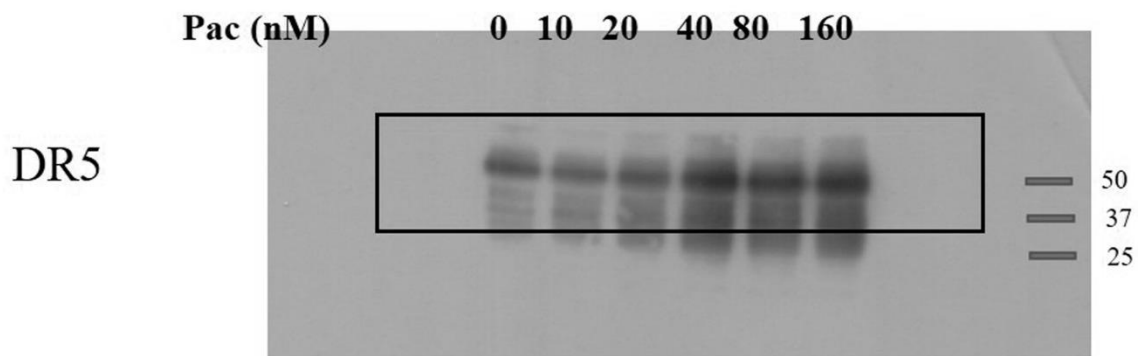
# Supplementary Fig. D

Fig. D Photographs of the full-length blots utilized in Figure 4

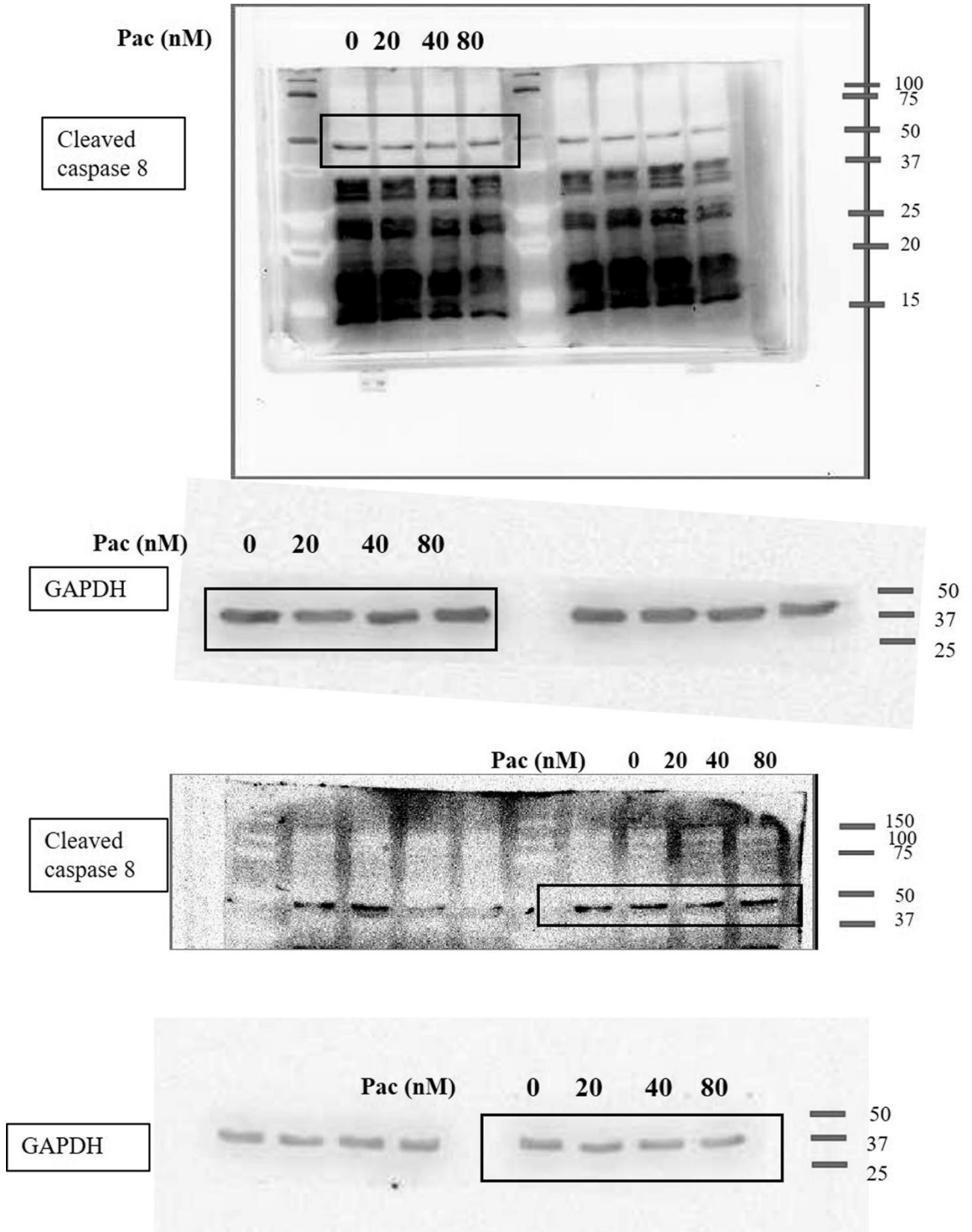
**Fig. 4a**



**Fig.4b**



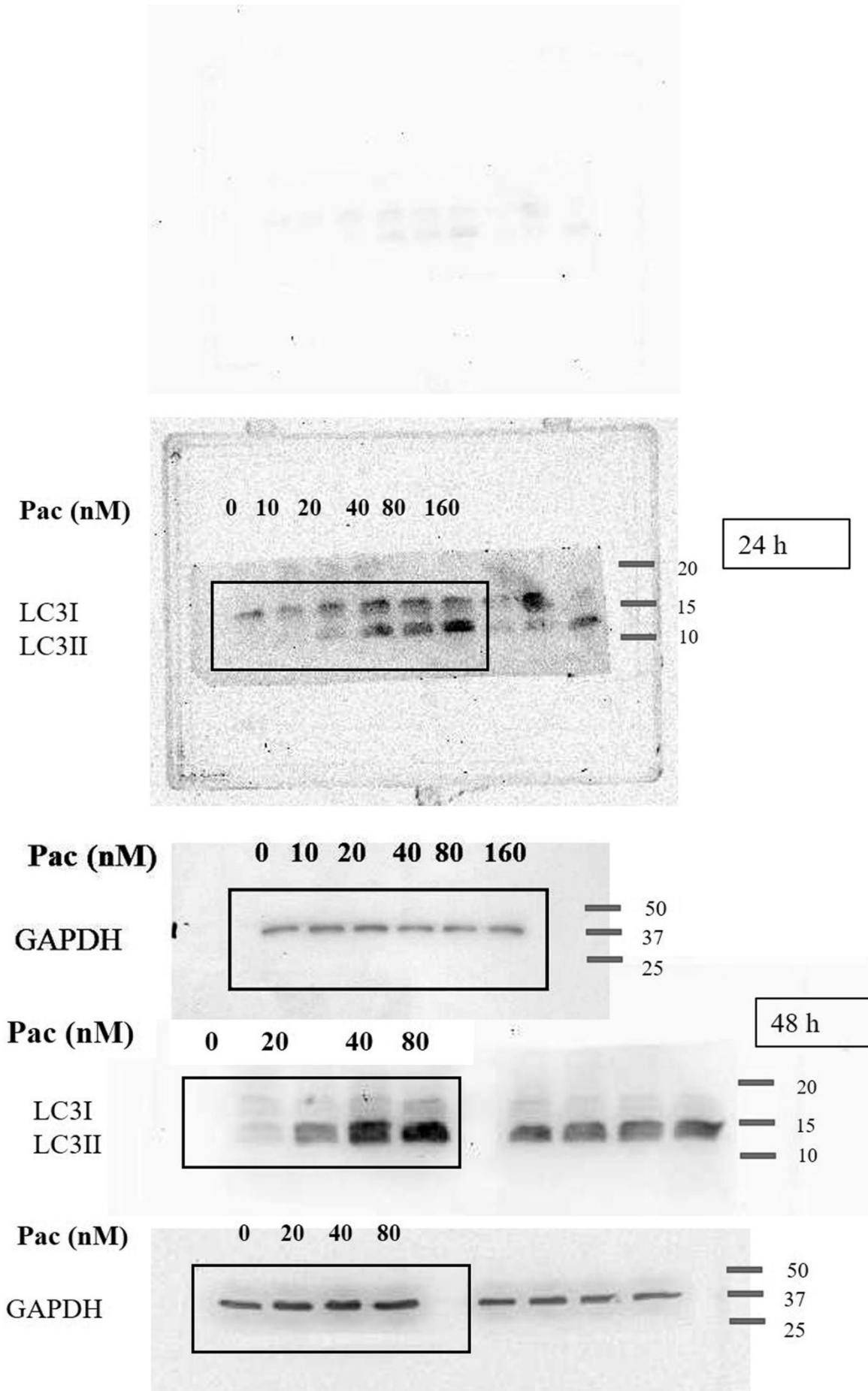
**Fig. 4c**



# Supplementary Fig. E

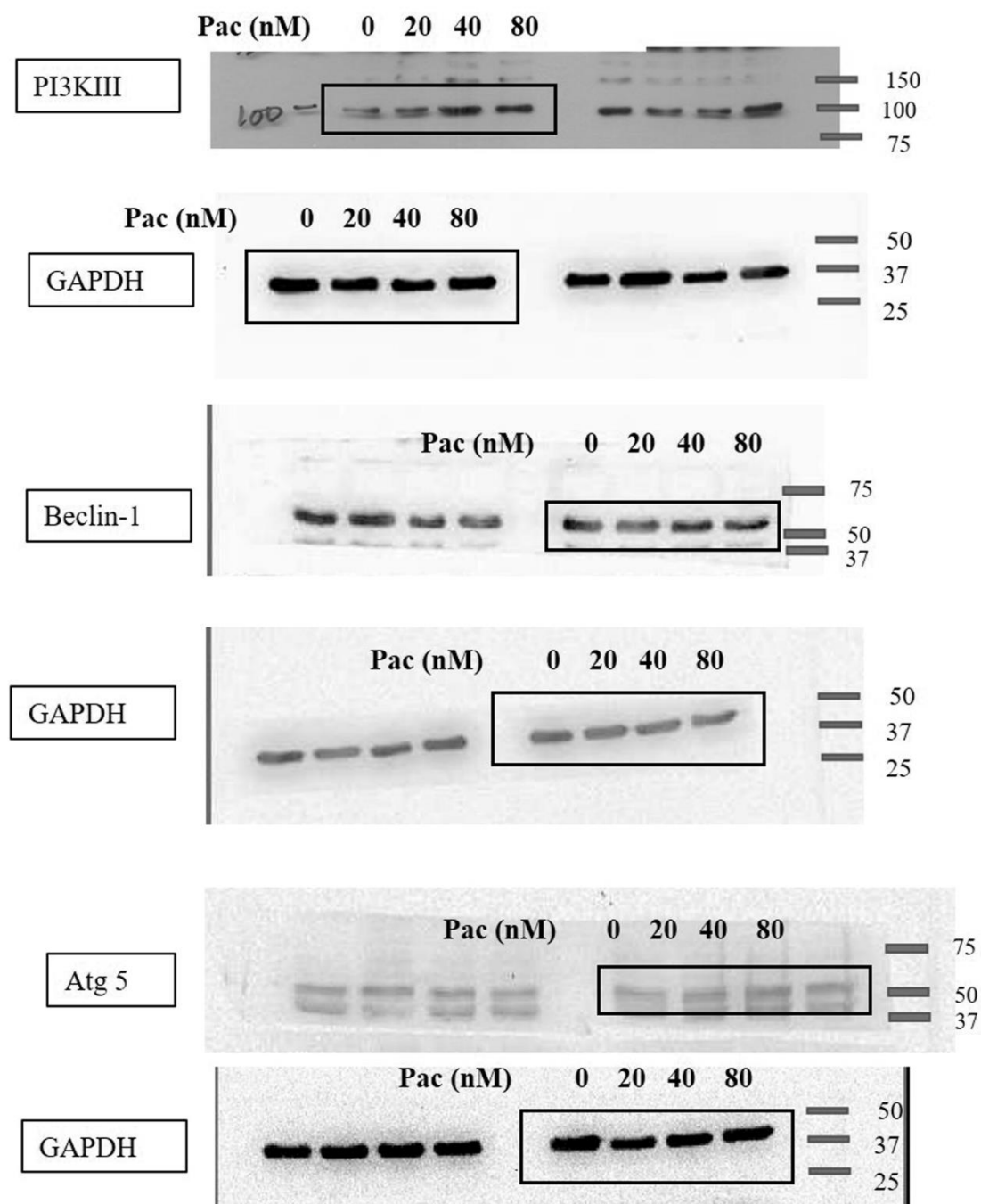
Fig.E Photographs of the full-length blots described in Figure 5

**Fig. 5c**



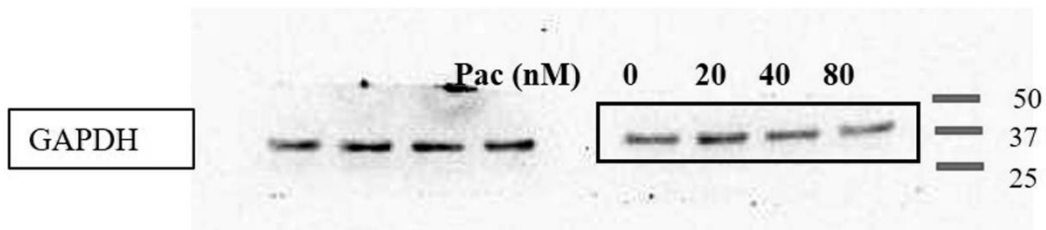
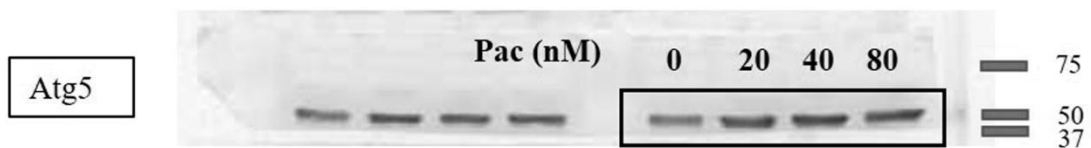
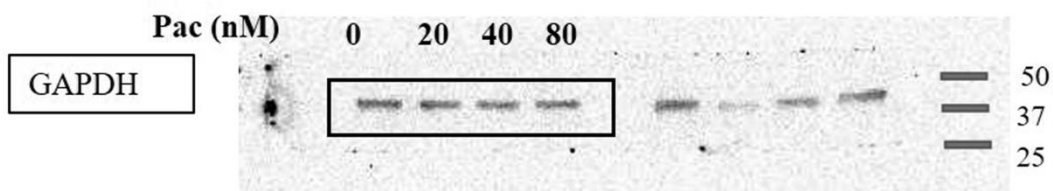
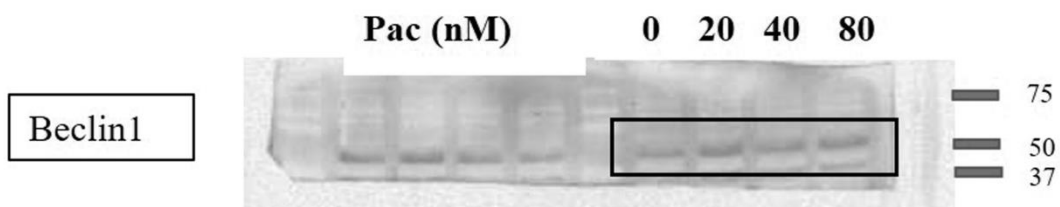
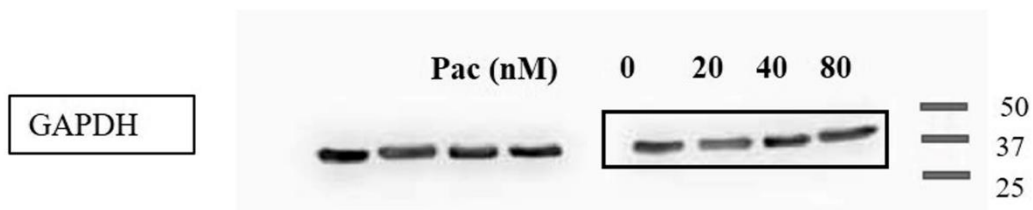
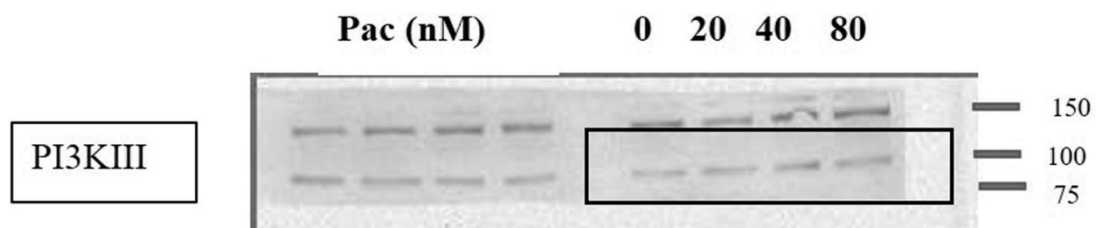
**Fig. 5d**

24 h

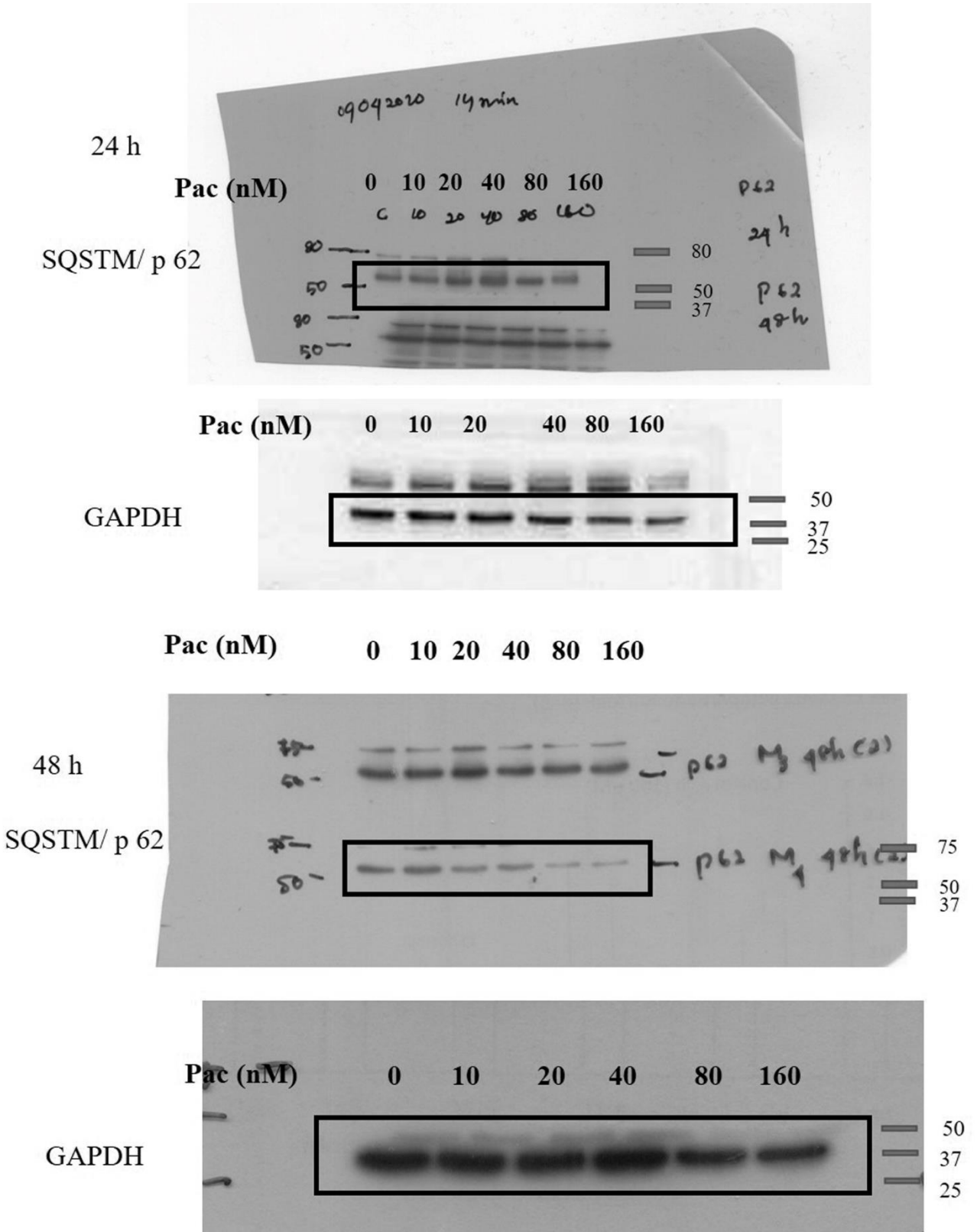




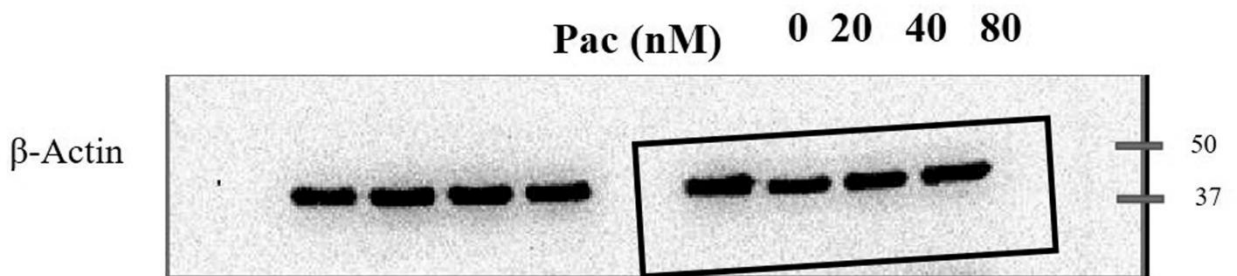
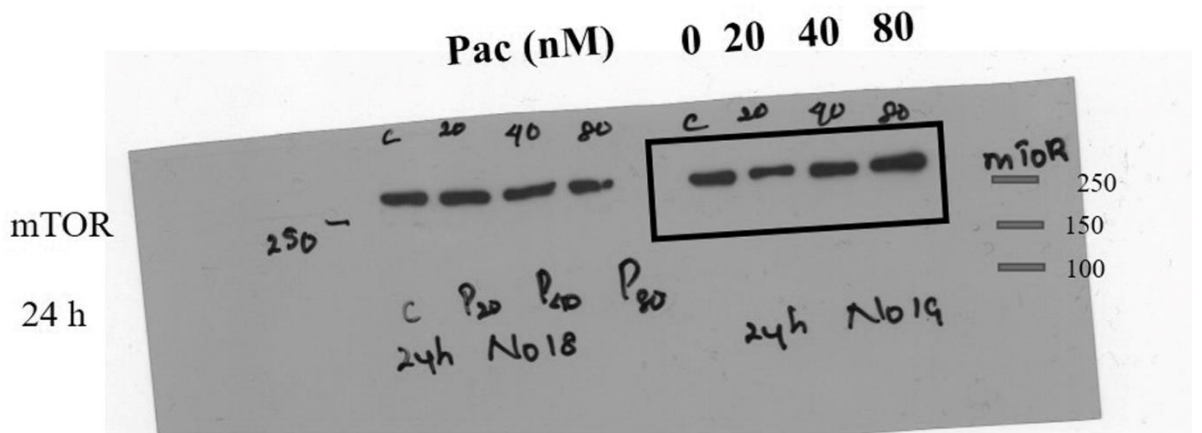
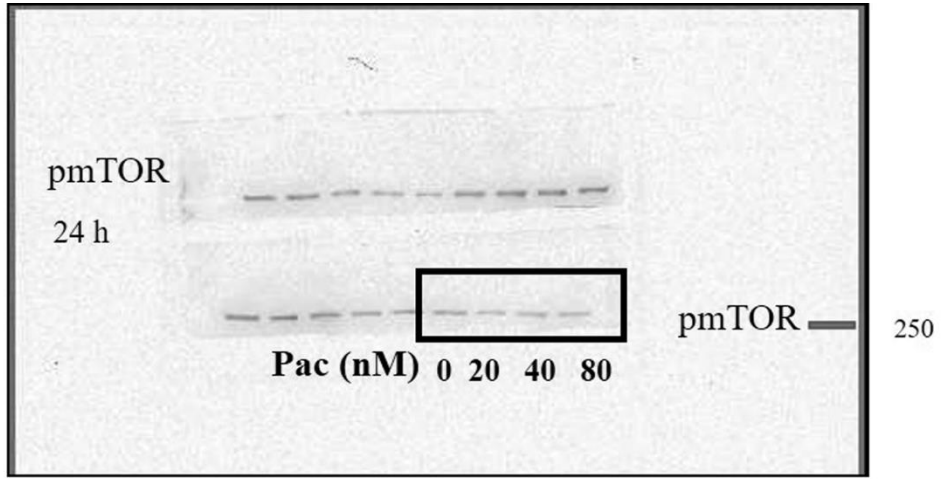
48 h

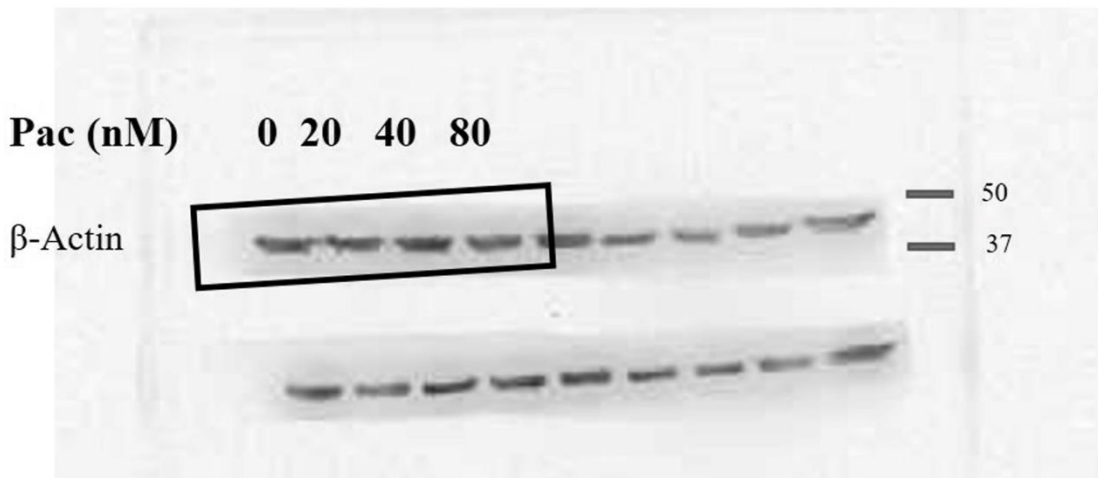
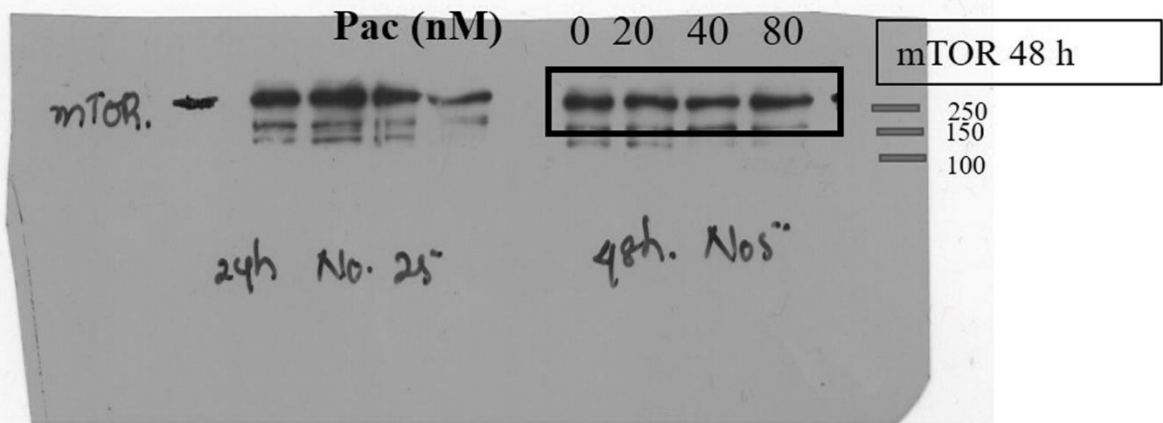
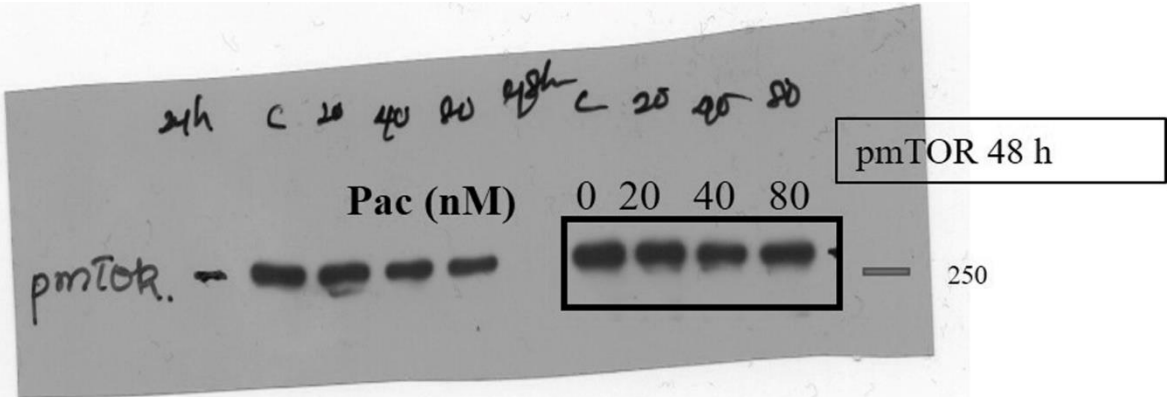


**Fig. 5e**

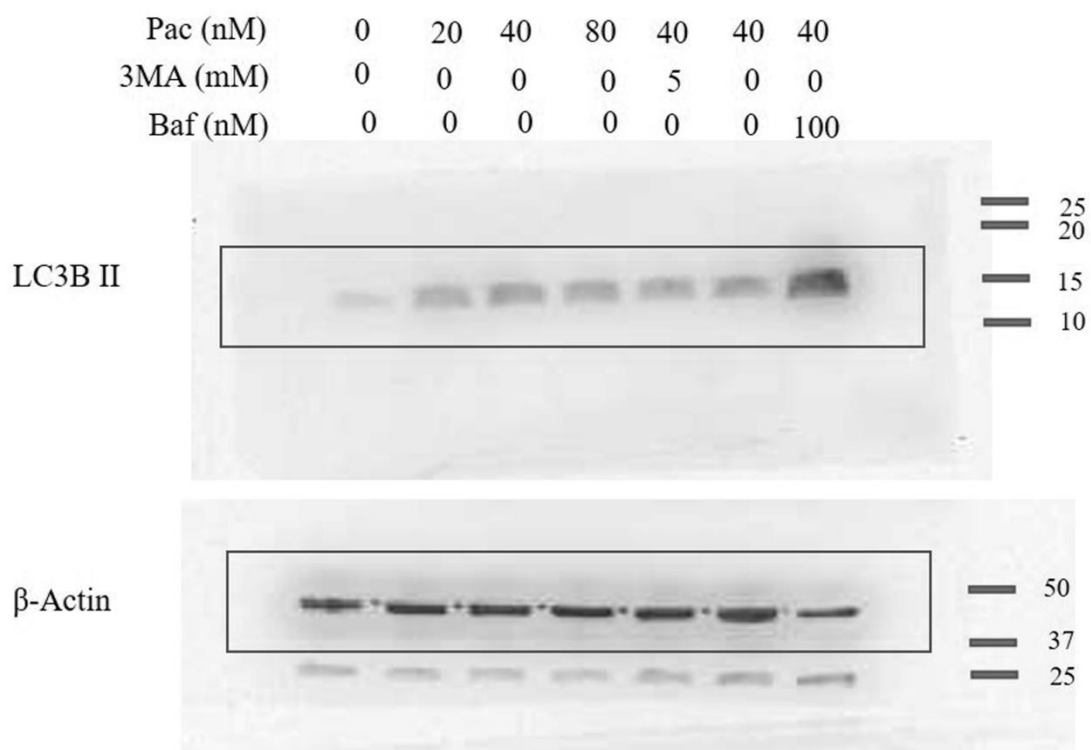


**Fig. 5f**





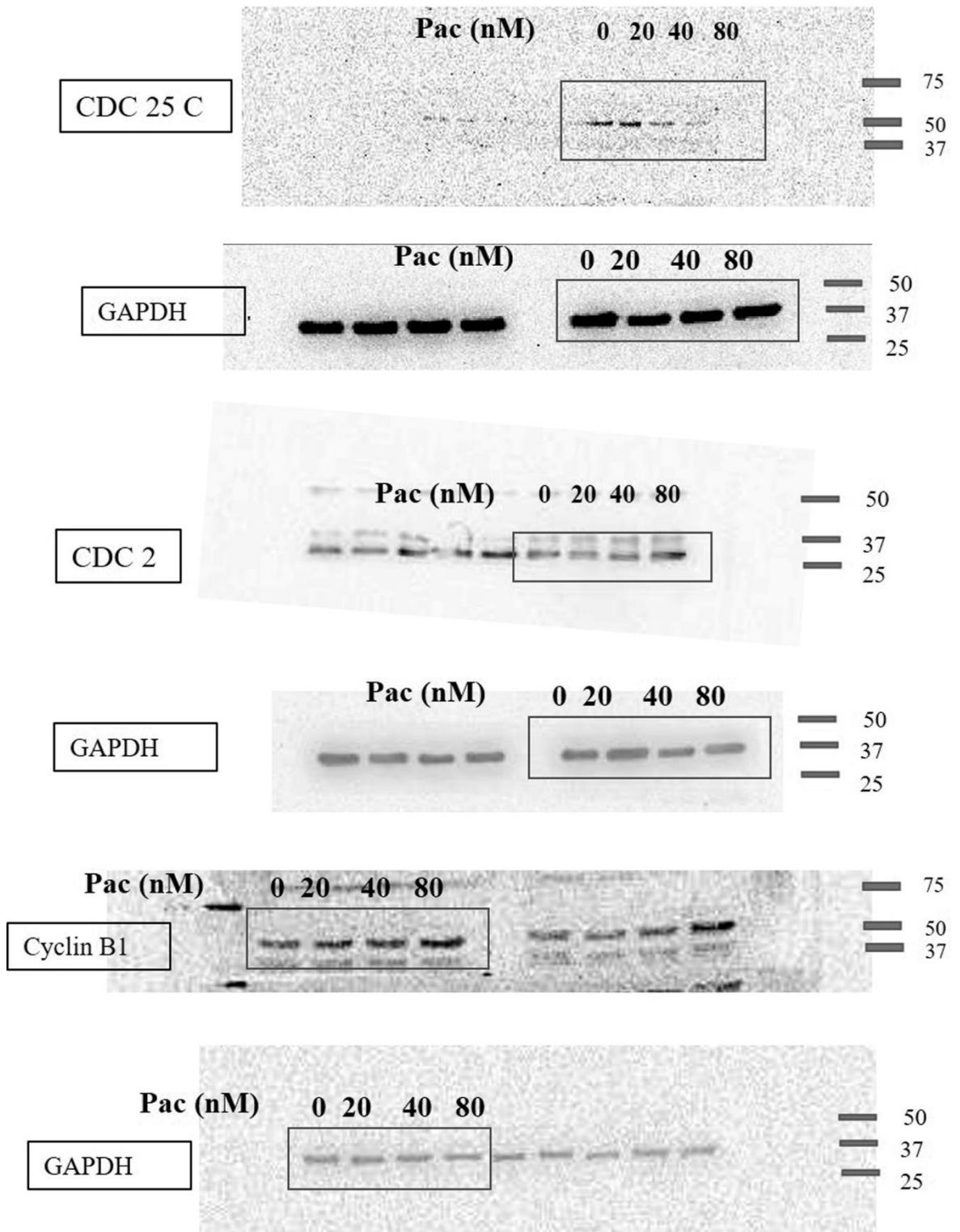
**Fig. 5g**



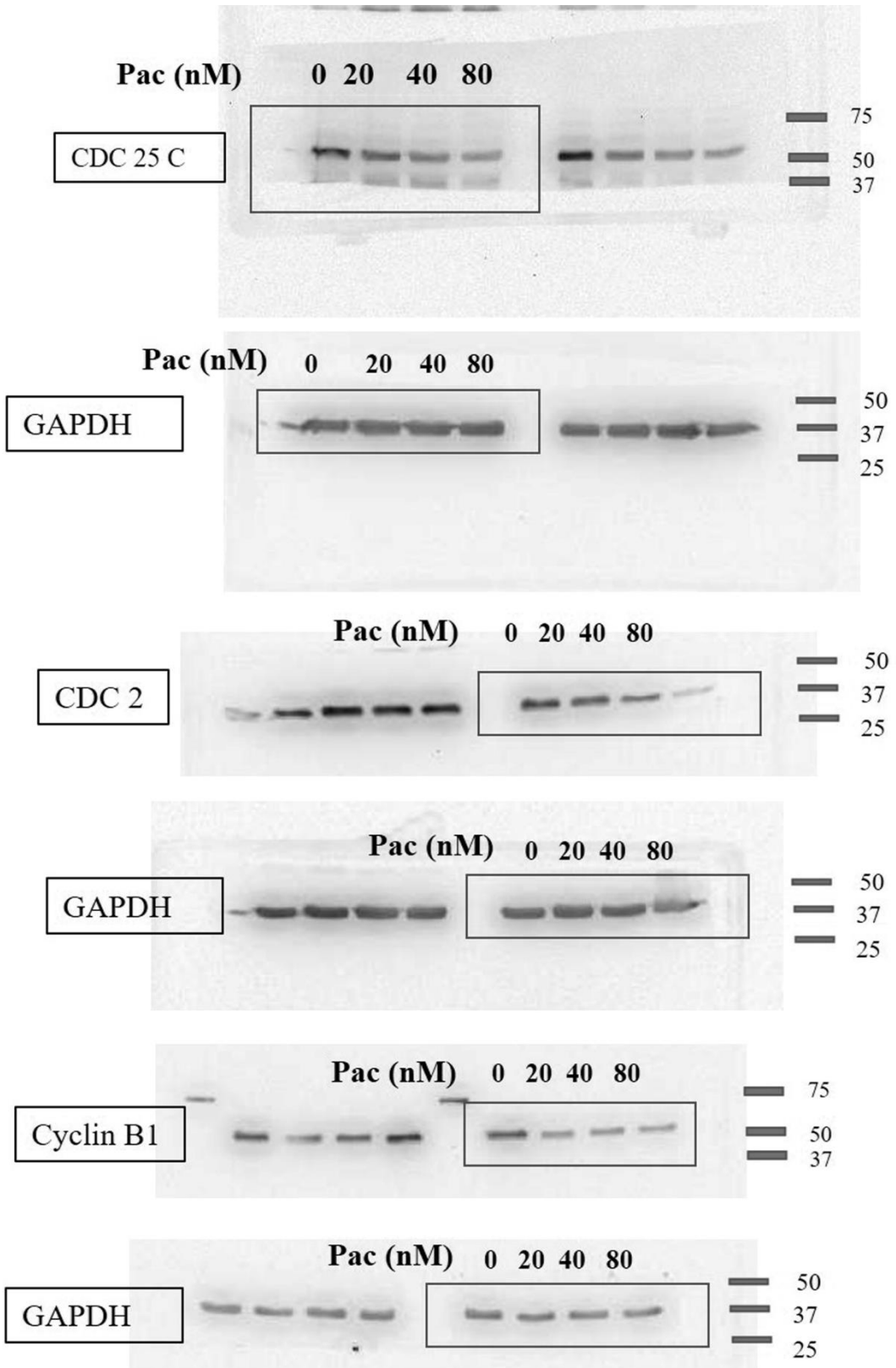
# Supplementary Fig. F

Fig. F Photographs of the full-length blots described in Figure 6

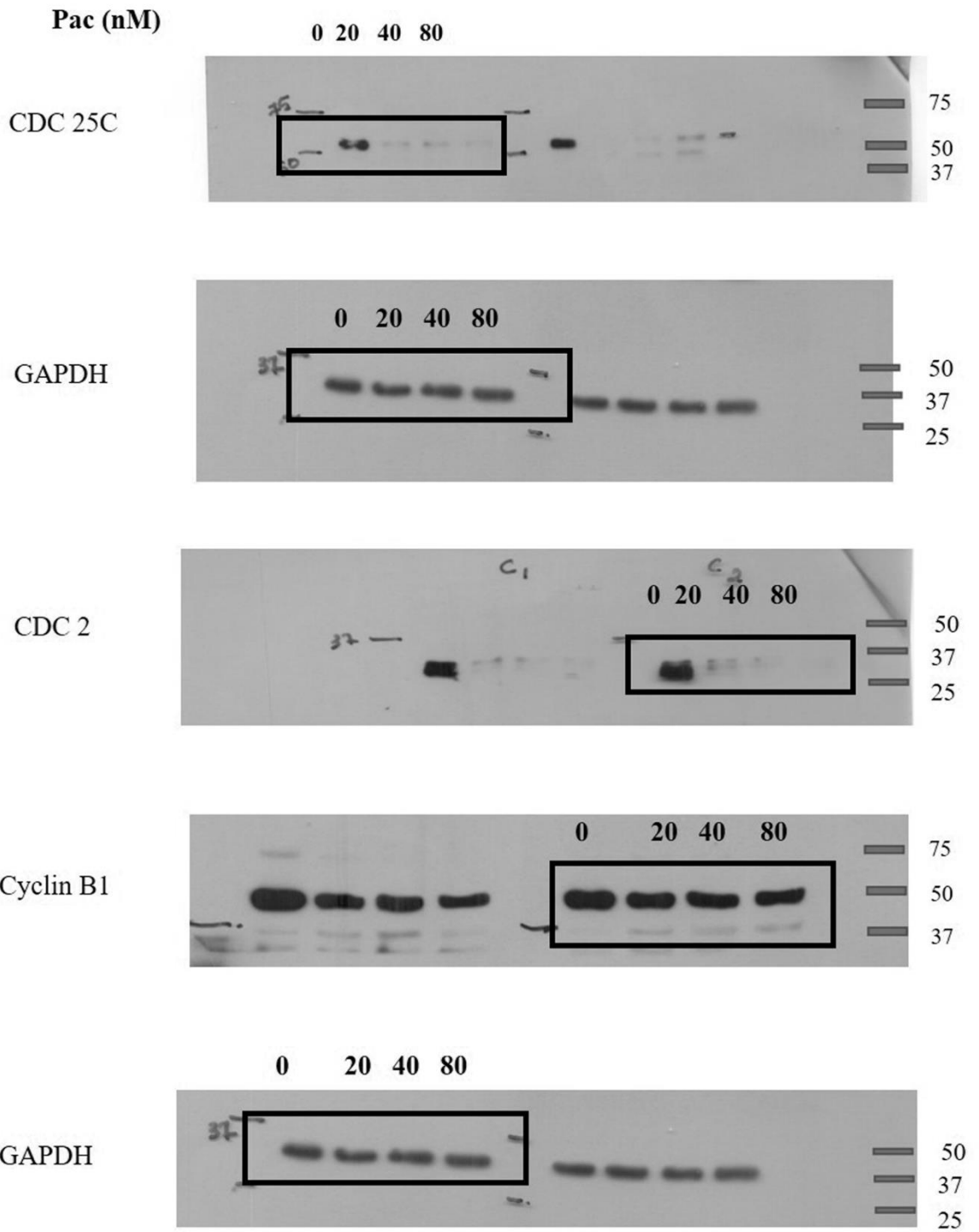
**Fig. 6b**



**Fig. 6d**



**Fig. 7f**

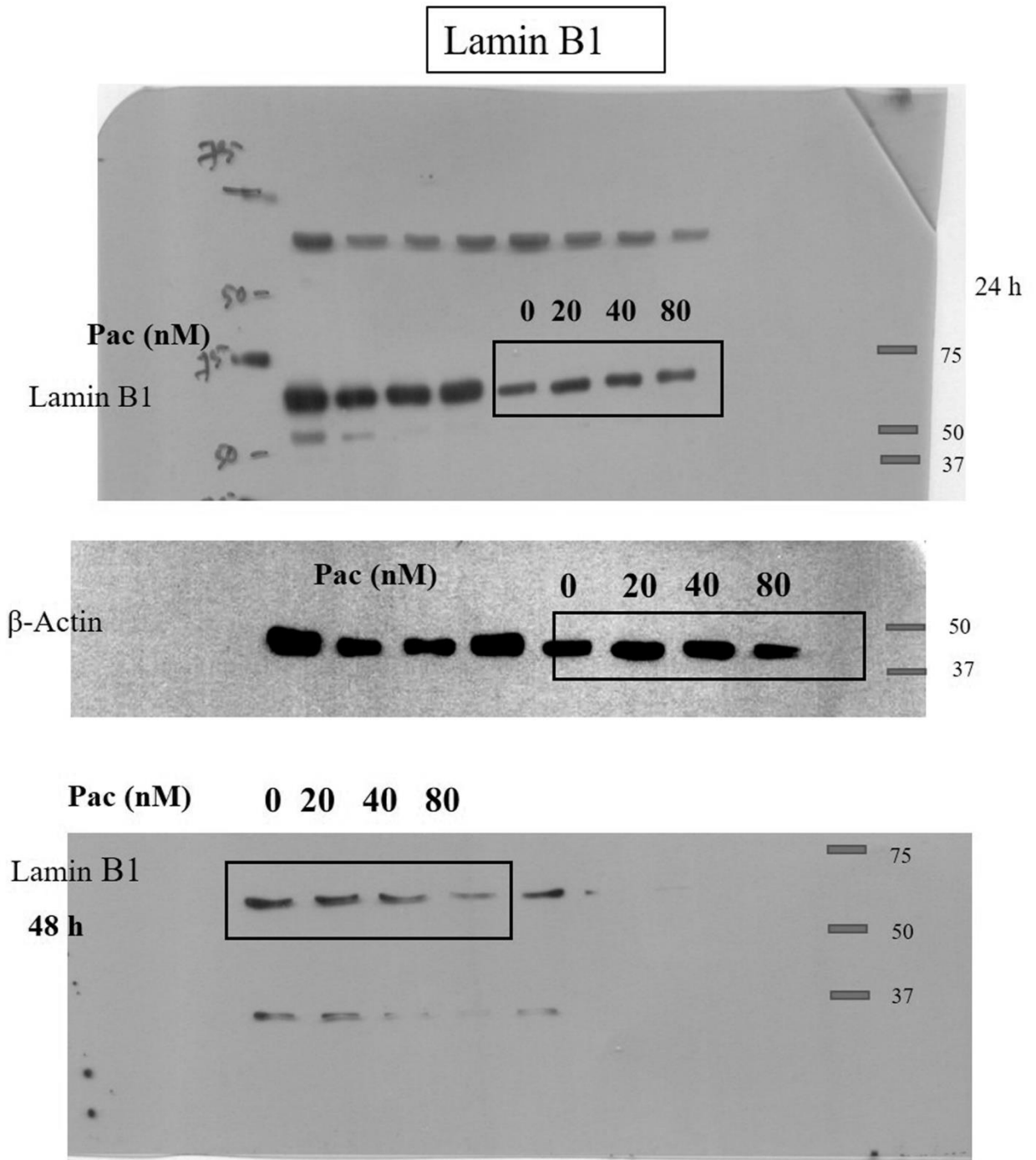


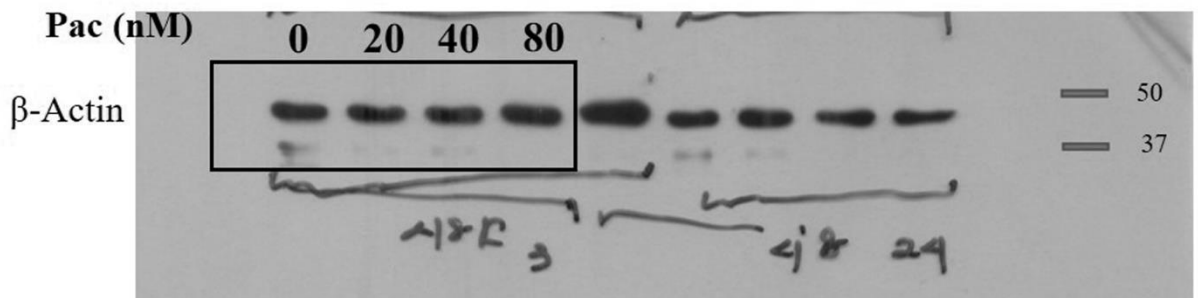
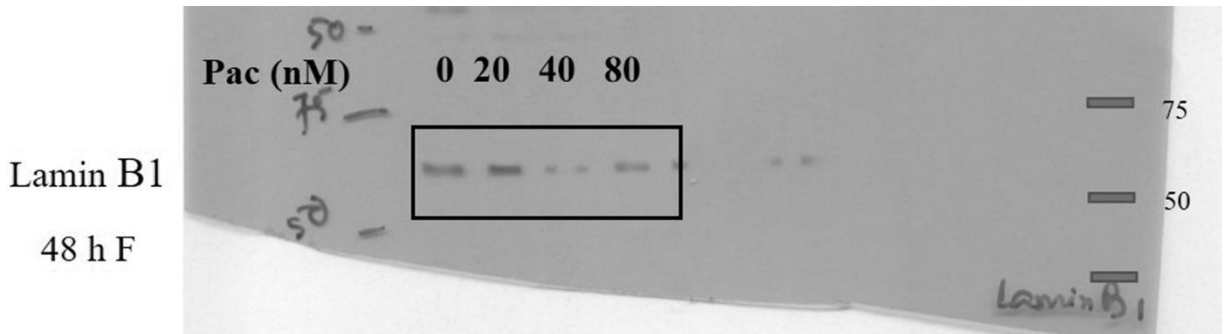


# Supplementary Fig. G

Fig. G Photographs of the full-length blots utilized in Figure 7

**Fig. 7g**





**Fig. 7h**

