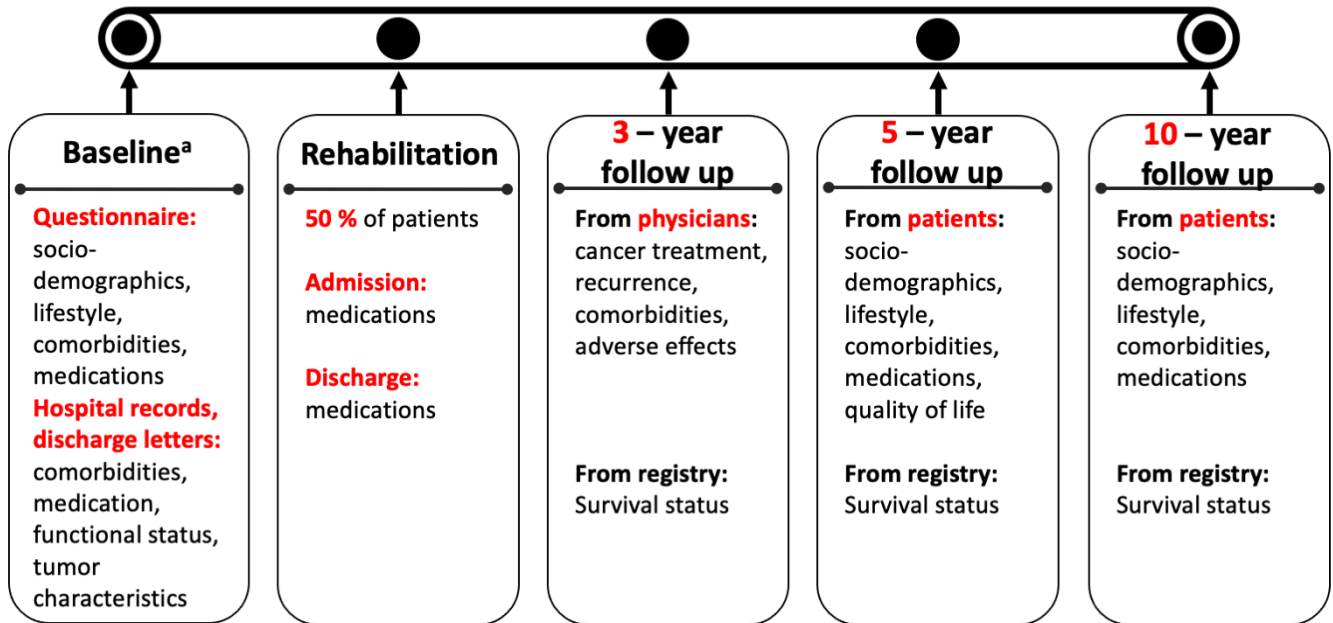


Supplemental Figures for:
Association of polypharmacy with colorectal cancer survival among older patients
Ben Schöttker et al.

Figure S1. Illustration of study timeline and collection of data in the DACHS study



^a Baseline interview was conducted during hospital stay for colorectal cancer surgery or some days/weeks afterwards.

Figure S2. Flow chart of the study population

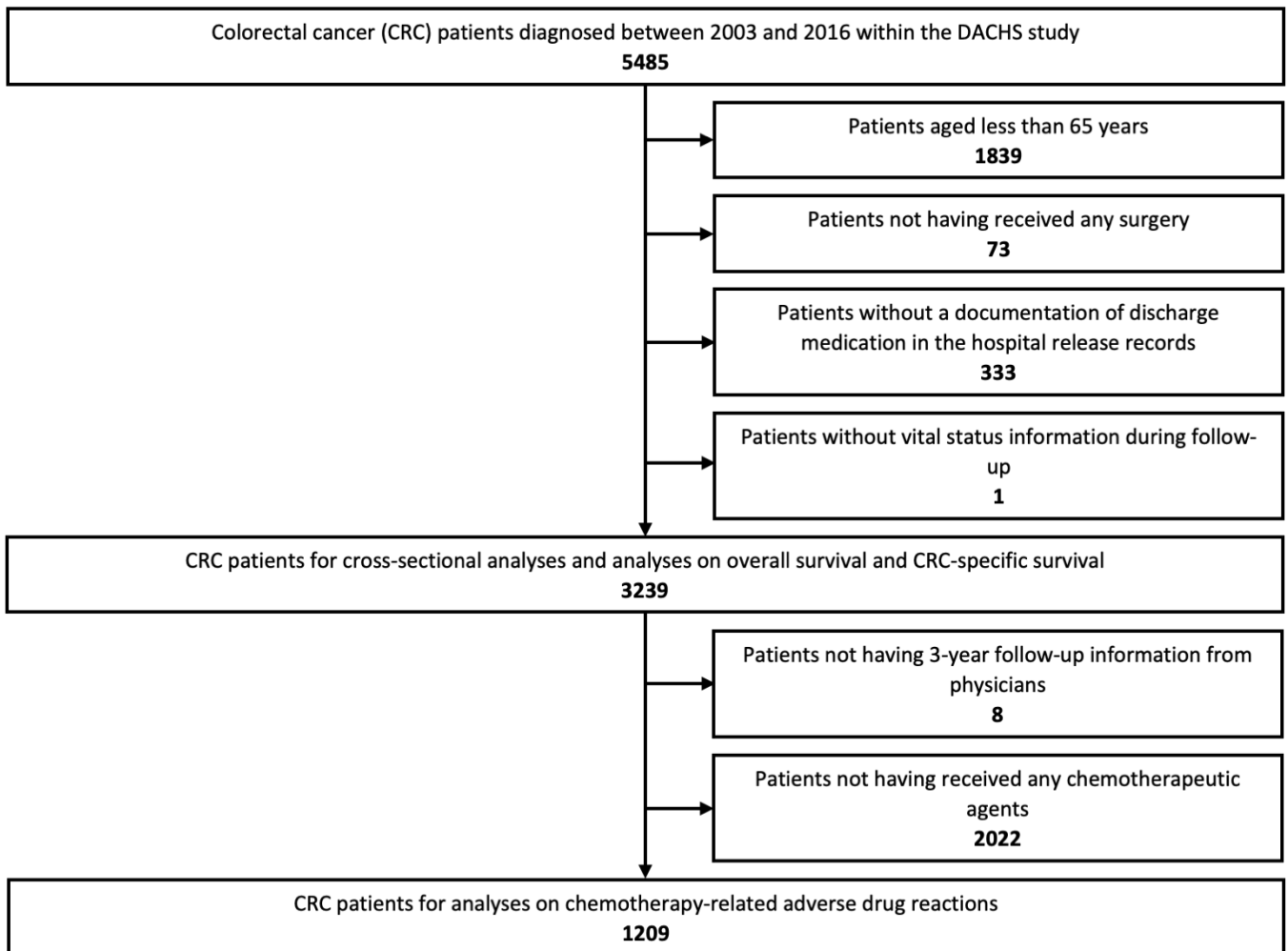


Figure S3. Distribution of number of medications when counting all drugs without exclusions

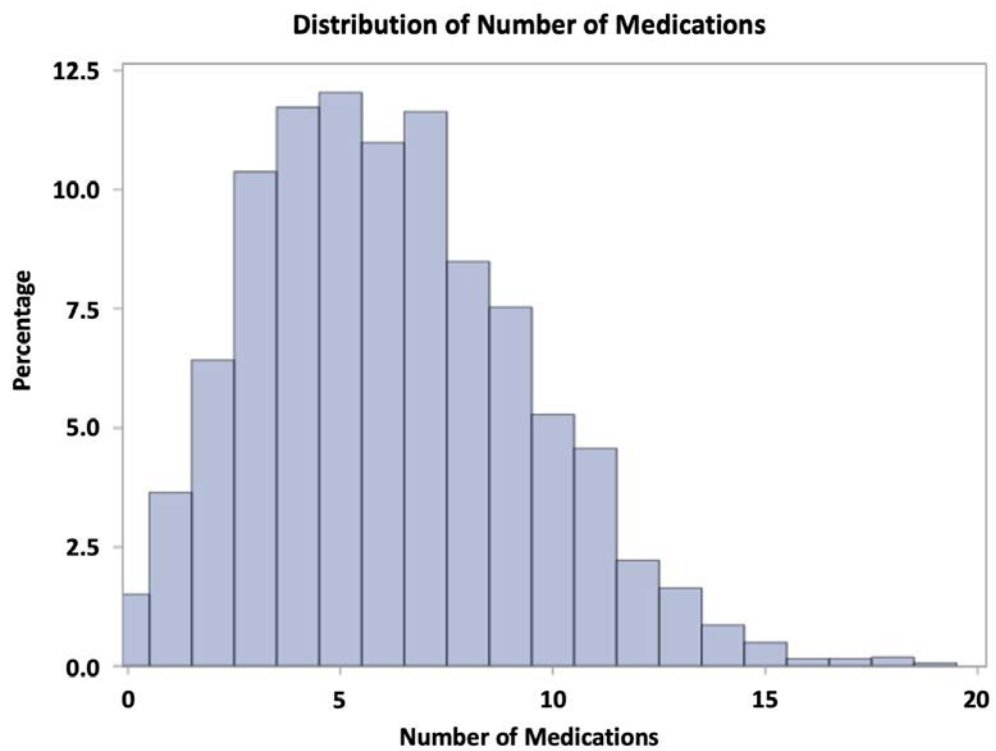
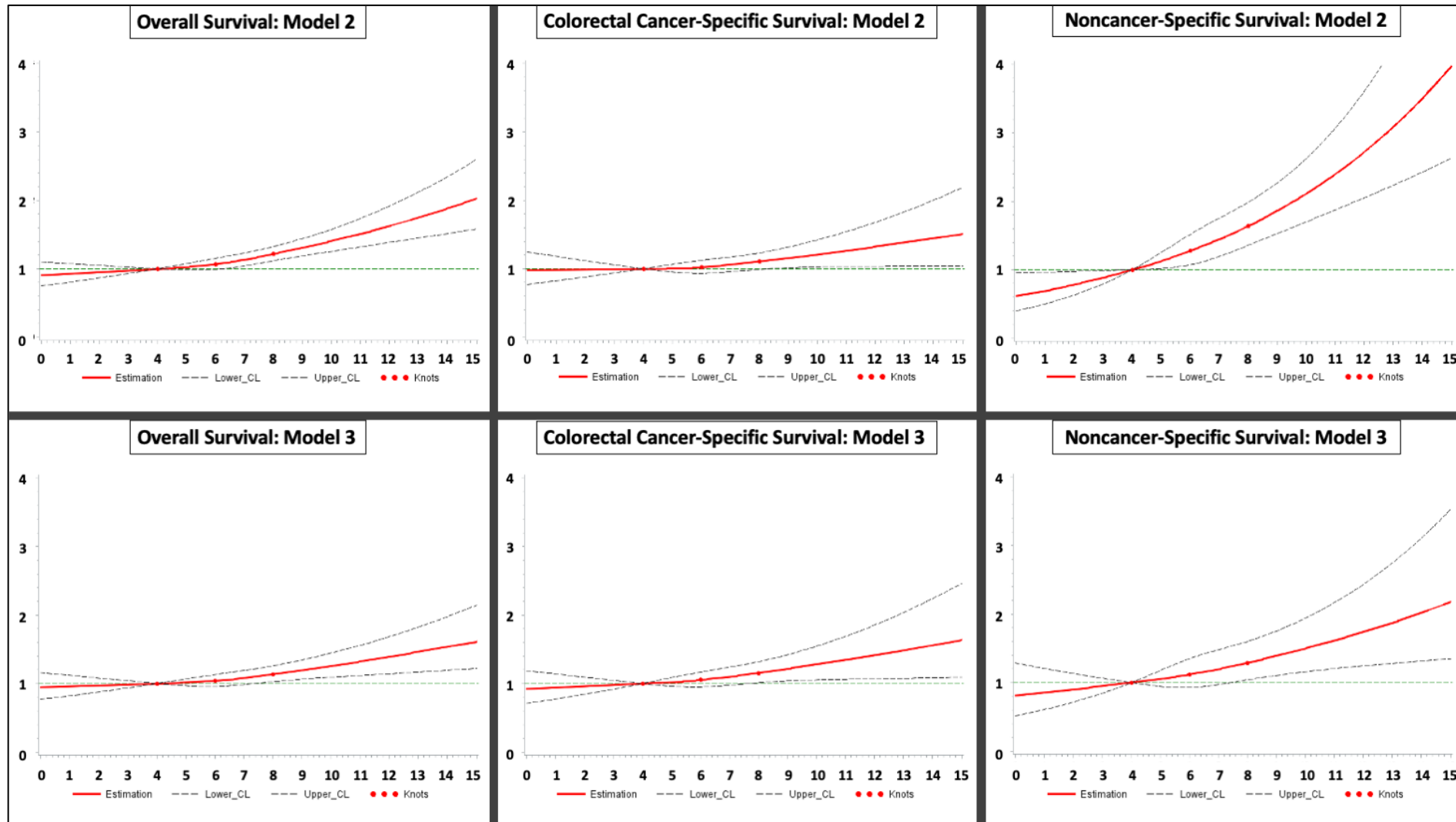


Figure S4. Dose-response curves for the associations of the number of drugs (all counted without exclusions) with overall, colorectal cancer specific, and non-cancer specific survival in model 2 (without adjustment for functional status and comorbidity) and model 3 (full model)^a



^a The dose-response curves were obtained from the imputation dataset 1.