

Supplemental Figures for:

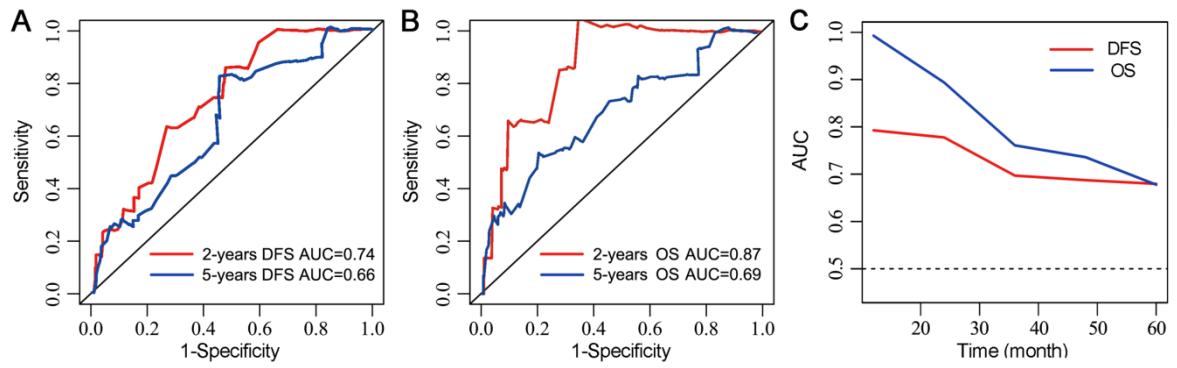
Risk stratification of early-stage cervical cancer with intermediate-risk factor: model development and validation based on machine learning algorithm

Kun Song et al.

# Supplemental Material

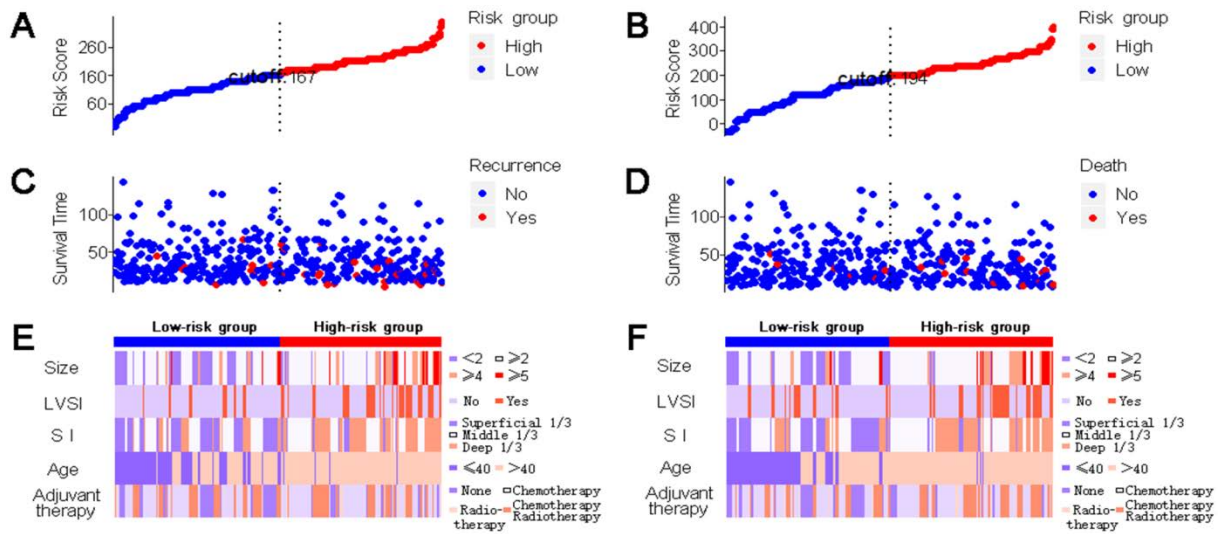
The supplemental material includes:

- **Supplementary Figure 1**
- **Supplementary Figure 2**



**Supplementary Figure 1.** ROC curves of the prediction model for DFS (A), OS (B), and time-dependent ROC curves of DFS and OS (C).

ROC, receiver operating characteristic; DFS, disease-free survival; OS, overall survival; AUC, area under the receiver operating characteristic curve.



**Supplementary Figure 2.** The risk score of DFS (A) and OS (B); recurrence time (C) and death time (D) of patients; heatmap of risk factors in recurrence model (E) and death model (F).

Risk score of each patient was calculated by nomogram lists of the two models. The median risk score is considered as cutoff value, and the two risk groups were divided according to the median risk score. The black vertical line in the figures is presents the cutoff value. Patients in the low-risk group were on the left of the vertical line, and patients in the high-risk group were on the right of the vertical line.

LVSI, lymphovascular space invasion; SI, stromal invasion.