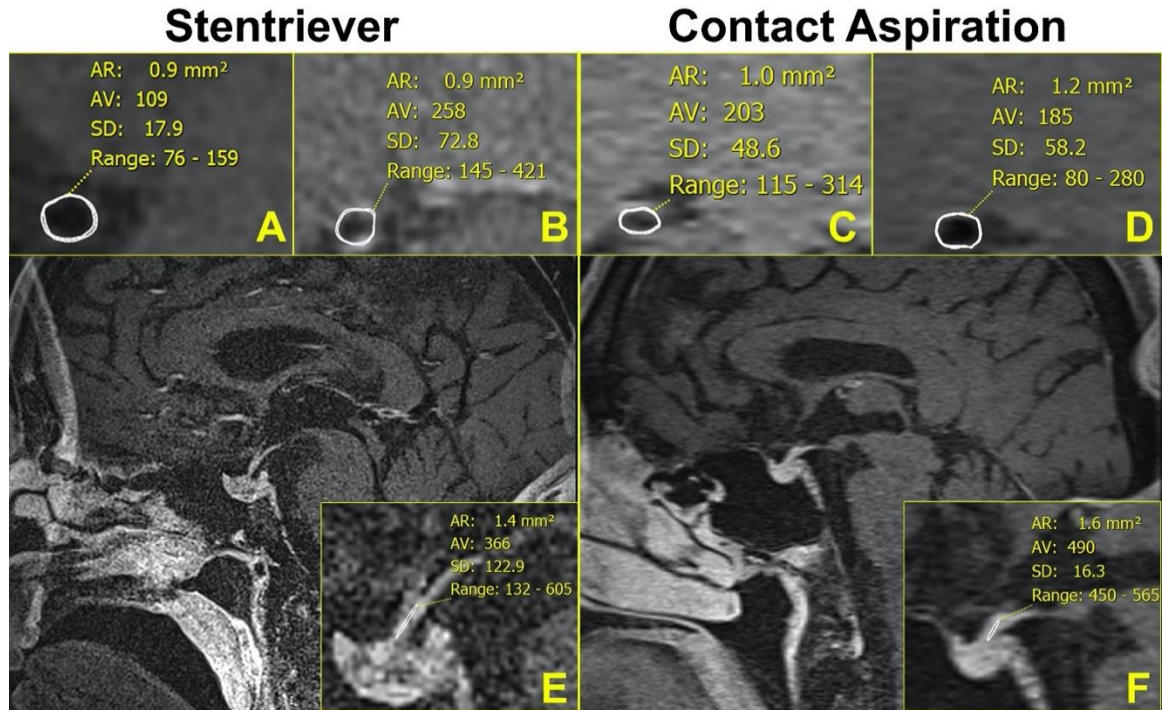


SUPPLEMENTAL MATERIAL

High-Resolution Vessel Wall Imaging After Mechanical Thrombectomy

Supplemental Figures

Supplemental Figure I.



Supplemental Figure I. Vessel wall analysis. The CR is calculated by utilizing the maximum SI of the cross-sectional ROI divided by the maximum SI of the pituitary stalk (E and F). *Stentriever*: Reference vessel (A) $CR = 159/605 = 0.26$, and target vessel (B) $CR = 421/605 = 0.7$. *Contact Aspiration*: Reference vessel (C) $CR = 314/565 = 0.56$, and target vessel (D) $CR = 280/565 = 0.50$

Supplemental Tables

Supplemental Table I. Technical parameters for HR-VWI acquisition in a 3T Siemens Magnetom Skyra MRI scanner (20-channel head coil).

Parameter	3D T1 SPACE	T2 SPACE	CE-MRA	SWI
TR (msec)	900	2000	3.3	27
TE (msec)	15	249	1.28	20
Flip angle	variable	variable	25	15
Bandwidth (Hz/pixel)	446	460	590	160
FOV (mm)	200 x 200	180	223 x 195	240 x 180
Matrix (mm)	320 x 320	320 x 320	252 x 284	256 x 184
Voxel size (mm)	0.6 x 0.6 x 0.6	0.6	0.6 x 0.6 x 0.8	0.9 x 0.9 x 2.4
Slice thickness (mm)	0.63	0.56	0.8	2.4
ETL	52	106	0	---
Acquisition time	6:44	8:50	0:15	3:03

CE-MRA: contrast-enhanced MRA; ETL: echo train length; FOV: field of view; TE: echo time; TR: response time.

Supplemental Table 2. Clinical characteristic per group

	Use of Stentriever N=16	Contact Aspiration Only N=4	P
NIHSS Admission	17.5±8.7	14.5±9.5	0.55
IV tPA	6(38%)	2(50%)	>0.99
ASPECT	9±1.1	8.8±1.5	0.83
LKW to recanalization (Minutes)	570±343	415±235.9	0.41
Puncture to recanalization (Minutes)	56.5±48.1	17.5±8.2	0.13
Retrieval attempts	2.9±1.9	1.5±0.6	0.24
Success Rate (TICI score >2b)	15(93%)	4(100%)	>0.99
Complications	1(6%)	0	>0.99