

Supplemental Material

Table S1. ICD-9-CM codes used to define the comorbidities.

Comorbidities	ICD-9-CM codes	Diagnostic criteria
Hypertension	401-405	Discharge or outpatient department ≥ 2 times
Diabetes mellitus	250	Discharge or outpatient department ≥ 2 times
Heart failure	428	Discharge diagnosis
Prior stroke	433, 434, 436	Discharge diagnosis
Coronary artery disease	411, 413, 414	Discharge or outpatient department ≥ 2 times
Myocardial infarction	410, 412	Discharge diagnosis
Peripheral vascular diseases	443.8, 443.9	Discharge or outpatient department ≥ 2 times
COPD	491, 492, 493.2, 496	Discharge or outpatient department ≥ 2 times
Autoimmune diseases	279.4, 710, 714, 711.1, 711.2	Discharge or outpatient department ≥ 2 times
Liver cirrhosis	571.2, 571.5	Discharge or outpatient department ≥ 2 times
Hyperthyroidism	242	Discharge or outpatient department ≥ 2 times
CKD	580-589	Discharge or outpatient department ≥ 2 times
ESRD	585.6	Discharge or outpatient department ≥ 2 times
Anemia	280-285	Discharge or outpatient department ≥ 2 times
Alcoholism	305.00-305.03, 303.90-303.93	Discharge or outpatient department ≥ 2 times

CKD = chronic kidney disease; COPD = chronic obstructive pulmonary disease; ESRD = end-stage renal disease

Table S2. AUCs of different scoring schemes in the prediction of AF after different follow-up durations.

Follow up duration	C2HEST Score		CHA ₂ DS ₂ -VASc score		CHADS ₂ score	
	AUC (95% CI)	P value	AUC (95% CI)	P value	AUC (95% CI)	P value
1 year	0.840 (0.837 – 0.843)	< 0.001	0.809 (0.806 – 0.812)	< 0.001	0.811 (0.808 – 0.814)	< 0.001
3 years	0.792 (0.790 – 0.794)	< 0.001	0.777 (0.775 – 0.779)	< 0.001	0.766 (0.764 – 0.767)	< 0.001
5 years	0.769 (0.767 – 0.770)	< 0.001	0.760 (0.758 – 0.761)	< 0.001	0.745 (0.743 – 0.746)	< 0.001
7 years	0.750 (0.748 – 0.751)	< 0.001	0.745 (0.743 – 0.746)	< 0.001	0.728 (0.726 – 0.729)	< 0.001
10 years	0.724 (0.723 – 0.725)	< 0.001	0.723 (0.722 – 0.724)	< 0.001	0.704 (0.703 – 0.705)	< 0.001
12 years	0.708 (0.706 – 0.709)	< 0.001	0.710 (0.709 – 0.711)	< 0.001	0.690 (0.689 – 0.691)	< 0.001
16 years	0.670 (0.669 – 0.671)	< 0.001	0.676 (0.675 – 0.677)	< 0.001	0.655 (0.654 – 0.656)	< 0.001

AF = atrial fibrillation; AUC = area under the receiver operating characteristic curve; CI = confidence interval

Table S3. AUCs of Taiwan AF score in the prediction of AF after different follow-up durations for males and females.

Follow up duration	Taiwan AF score			
	Males		Females	
	AUC (95%CI)	P value	AUC (95%CI)	P value
1 year	0.863 (0.861 - 0.864)	< 0.001	0.864 (0.862 - 0.867)	< 0.001
3 years	0.835 (0.833 - 0.837)	< 0.001	0.831 (0.829 - 0.833)	< 0.001
5 years	0.831 (0.829 - 0.833)	< 0.001	0.829 (0.827 - 0.831)	< 0.001
7 years	0.813 (0.812 - 0.814)	< 0.001	0.816 (0.813 - 0.818)	< 0.001
10 years	0.794 (0.792 - 0.796)	< 0.001	0.793 (0.792 - 0.795)	< 0.001
12 years	0.782 (0.78 - 0.785)	< 0.001	0.783 (0.781 - 0.786)	< 0.001
16 years	0.754 (0.752 - 0.757)	< 0.001	0.753 (0.751 - 0.755)	< 0.001

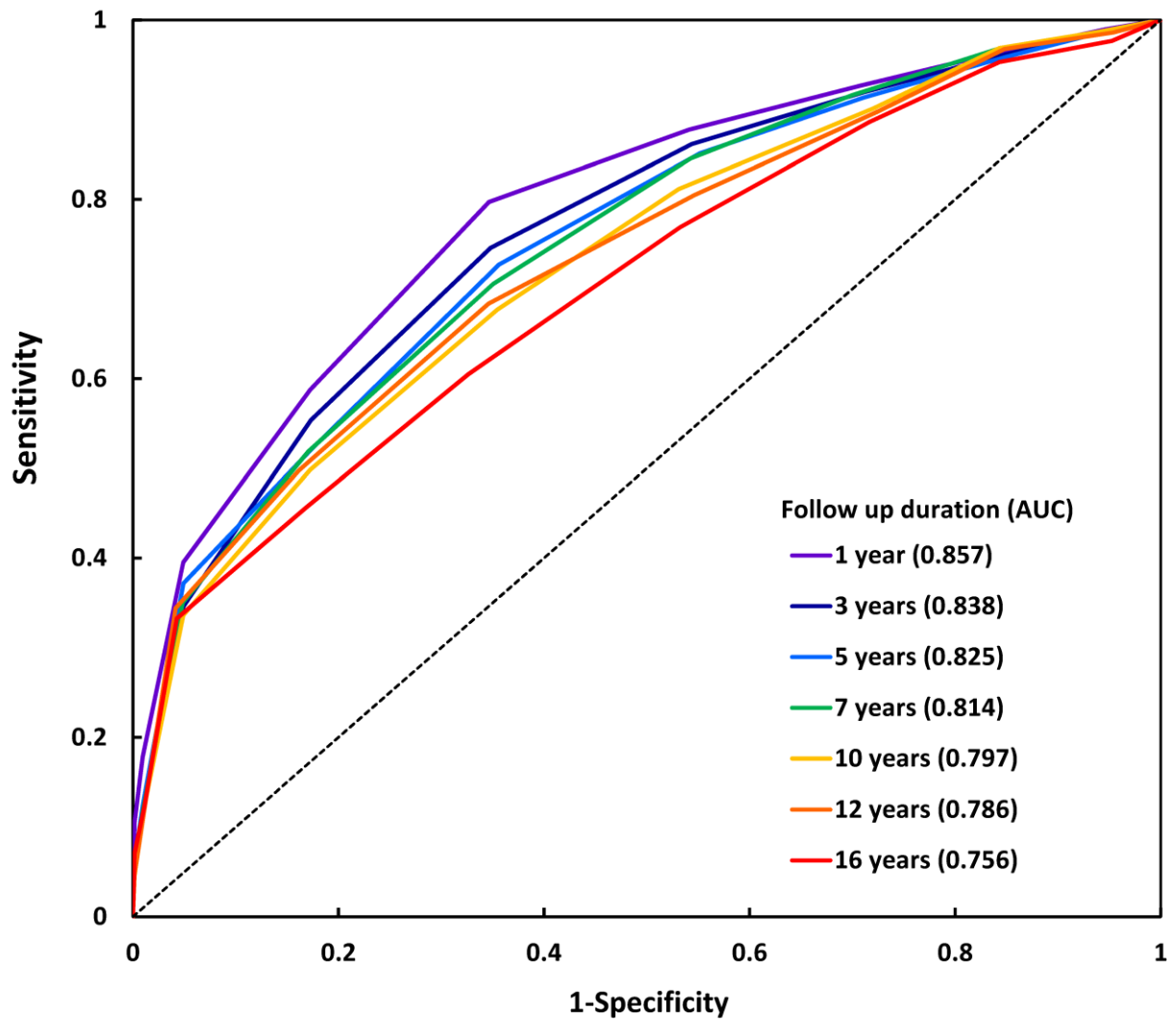
AF = atrial fibrillation; AUC = area under the receiver operating characteristic curve; CI = confidence interval

Table S4. AUCs of Taiwan AF score in the prediction of AF after different follow-up durations in different age strata.

Follow up duration	Taiwan AF score							
	<50 years		50-64 years		≥65 years		≥75 years	
	AUC (95%CI)	P value	AUC (95%CI)	P value	AUC (95%CI)	P value	AUC (95%CI)	P value
1 year	0.859 (0.858 - 0.861)	< 0.001	0.860 (0.858 - 0.862)	< 0.001	0.864 (0.862 - 0.867)	< 0.001	0.866 (0.864 - 0.869)	< 0.001
3 years	0.827 (0.825 - 0.829)	< 0.001	0.831 (0.829 - 0.833)	< 0.001	0.834 (0.832 - 0.836)	< 0.001	0.835 (0.833 - 0.837)	< 0.001
5 years	0.826 (0.824 - 0.828)	< 0.001	0.829 (0.827 - 0.831)	< 0.001	0.832 (0.83 - 0.835)	< 0.001	0.831 (0.829 - 0.834)	< 0.001
7 years	0.809 (0.806 - 0.811)	< 0.001	0.810 (0.808 - 0.812)	< 0.001	0.816 (0.813 - 0.818)	< 0.001	0.814 (0.811 - 0.817)	< 0.001
10 years	0.784 (0.782 - 0.786)	< 0.001	0.796 (0.794 - 0.799)	< 0.001	0.797 (0.795 - 0.799)	< 0.001	0.794 (0.792 - 0.796)	< 0.001
12 years	0.781 (0.779 - 0.783)	< 0.001	0.782 (0.779 - 0.786)	< 0.001	0.786 (0.783 - 0.789)	< 0.001	0.787 (0.784 - 0.790)	< 0.001
16 years	0.748 (0.746 - 0.749)	< 0.001	0.753 (0.751 - 0.756)	< 0.001	0.754 (0.752 - 0.756)	< 0.001	0.756 (0.754 - 0.757)	< 0.001

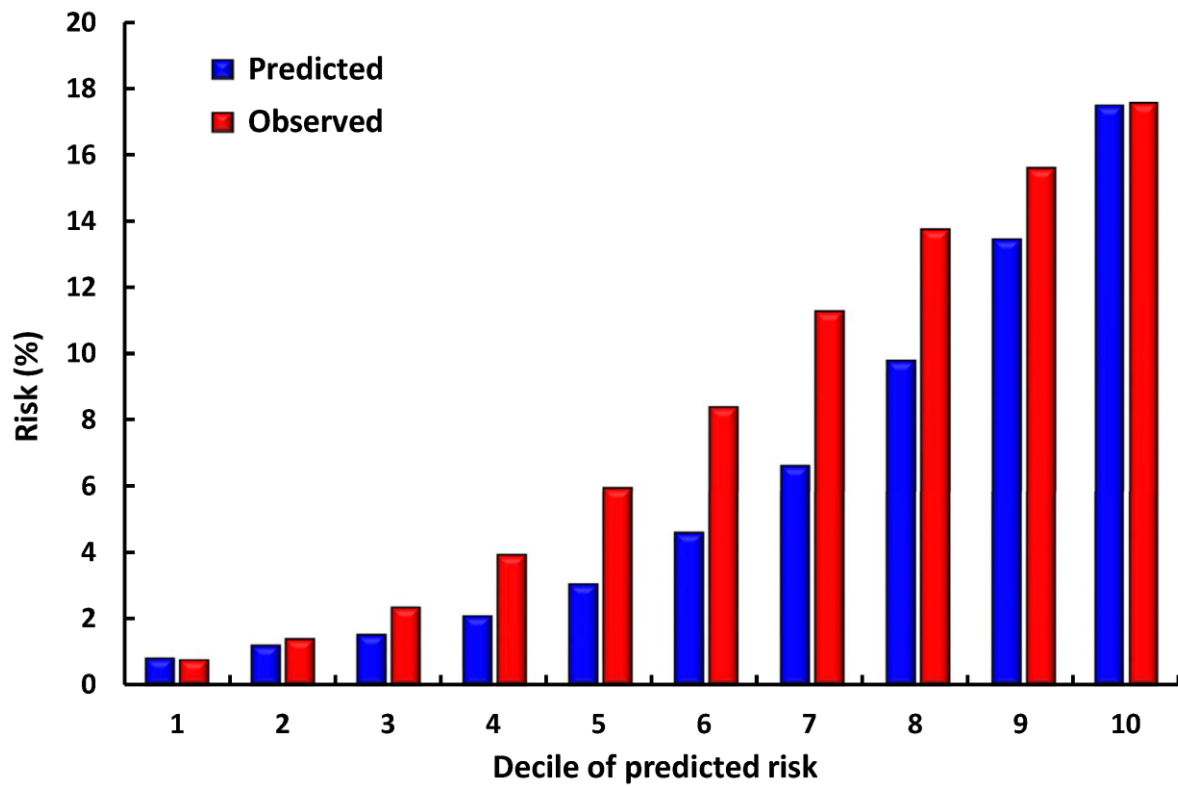
AF = atrial fibrillation; AUC = area under the receiver operating characteristic curve; CI = confidence interval

Figure S1. ROC curves of Taiwan AF score in the prediction of incident AF.



AF = atrial fibrillation; AUC = area under the receiver operating characteristic curve; ROC curve = receiver operating characteristic curve

Figure S2. Observed and expected AF risks by decile of predicted risk.



The predicted risk of AF in the 16-year risk deciles was similar to the observed risk and the calibration was adequate (Grønnesby-Borgan chi-square = 13.8, $p = 0.129$).

AF = atrial fibrillation.