

SUPPLEMENTAL MATERIAL

Table S1: Diagnoses of patients with PCWP<15mmHg

Diagnoses	n=117
Chronic thrombo-embolic pulmonary disease, n (%)	57 (49%)
CTEPH, n (%)	55 (47%)
CTED, n (%)	2 (2%)
Masked HFpEF*	9 (8%)
iPAH, n (%)	7 (6%)
COPD, n (%)	6 (5%)
PH with systemic disease (PH-group V)	5 (4%)
PVOD	3 (3%)
Other, n (%) (e.g. Interstitial lung disease, NSIP, ILD, pulmonary cancer)	8 (7%)
No cardiac or pulmonary disease	
No pulmonary or cardiac diagnosis	18 (15%)
Asymptomatic PH-gene carriers, n (%)	4 (3%)

*Patients were labelled as masked-HFpEF (PCWP at rest <15mmHg but an abnormal increase in filling pressures during a diastolic stress test) based on; exercise RHC (n=5), positive fluid challenge (n=2), repeat RHC after 1 year (n=1), or consensus based on clinical parameters and follow-up without performing diastolic stress test (n=1). CTEPH, chronic thrombo-embolic pulmonary hypertension; CTED, chronic thrombo-embolic pulmonary disease (without PH); HFpEF, heart failure with preserved ejection fraction; iPAH, idiopathic pulmonary hypertension; COPD, chronic obstructive pulmonary disease; PH, pulmonary hypertension, PVOD, pulmonary veno-occlusive disease; NSIP, nonspecific interstitial pneumonia; ILD, interstitial lung disease.

Table S2. Diagnostic properties of the H₂FPEF-score (continuous vs. discrete)

H₂FPEF-score to diagnose patients with manifest-HFpEF				
Diagnostic test (n=133)	Sensitivity	Specificity	PPV	NPV
H₂FPEF-score (discrete)				
≥1 (n=132)	100%	1%	43%	100%
≥2 (n=121)	96%	13%	45%	83%
≥3 (n=96)	86%	38%	51%	78%
≥4 (n=66)	63%	61%	55%	69%
≥5 (n=41)	42%	78%	59%	64%
≥6 (n=30)	33%	86%	63%	63%
≥7 (n=10)	14%	97%	80%	60%
≥8 (n=5)	7%	99%	80%	59%
≥9 (n=3)	4%	99%	67%	58%
H₂FPEF-score (continuous)				
≥10% (n=132)	100%	1%	43%	100%
≥25% (n=122)	96%	12%	45%	82%
≥50% (n=106)	88%	26%	47%	74%
≥68% (n=83)	74%	46%	51%	70%
≥90% (n=47)	47%	74%	57%	65%
≥95% (n=22)	25%	89%	64%	61%
≥99% (n=6)	9%	99%	83%	59%

HFpEF, heart failure with preserved ejection fraction; PPV, positive predictive value; NPV, negative predictive value.

Figure S1. Flow chart of patient selection

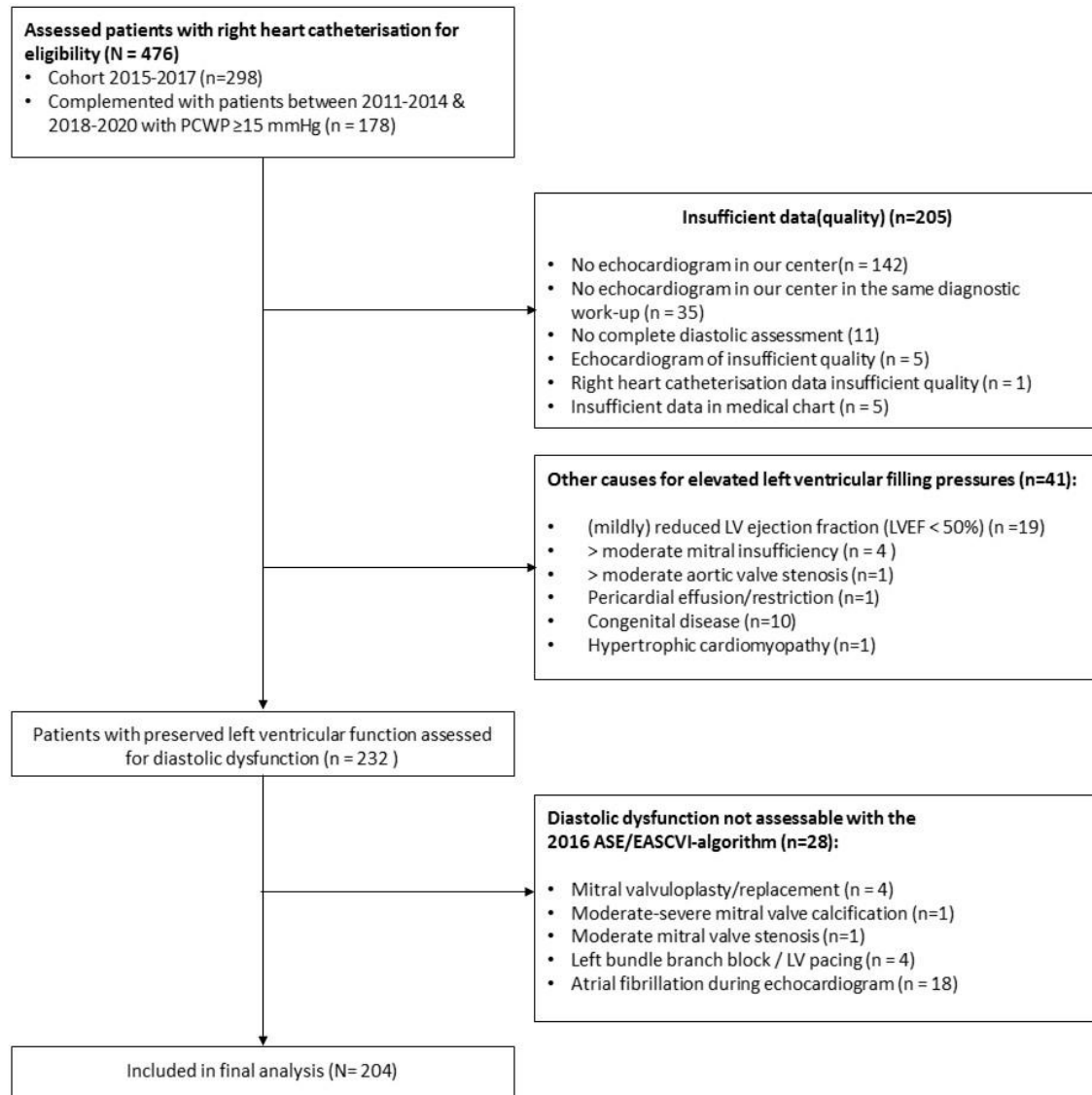
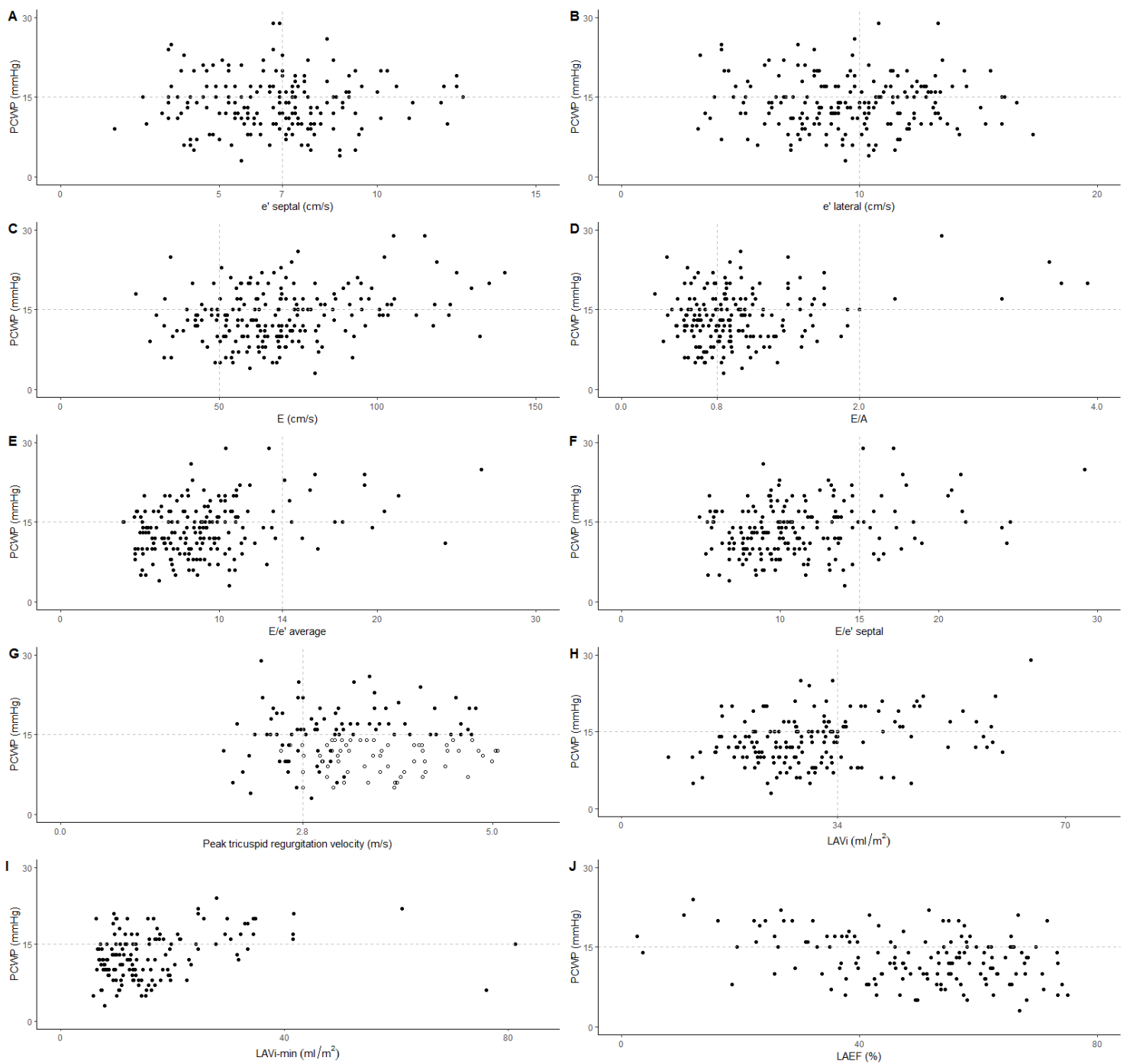
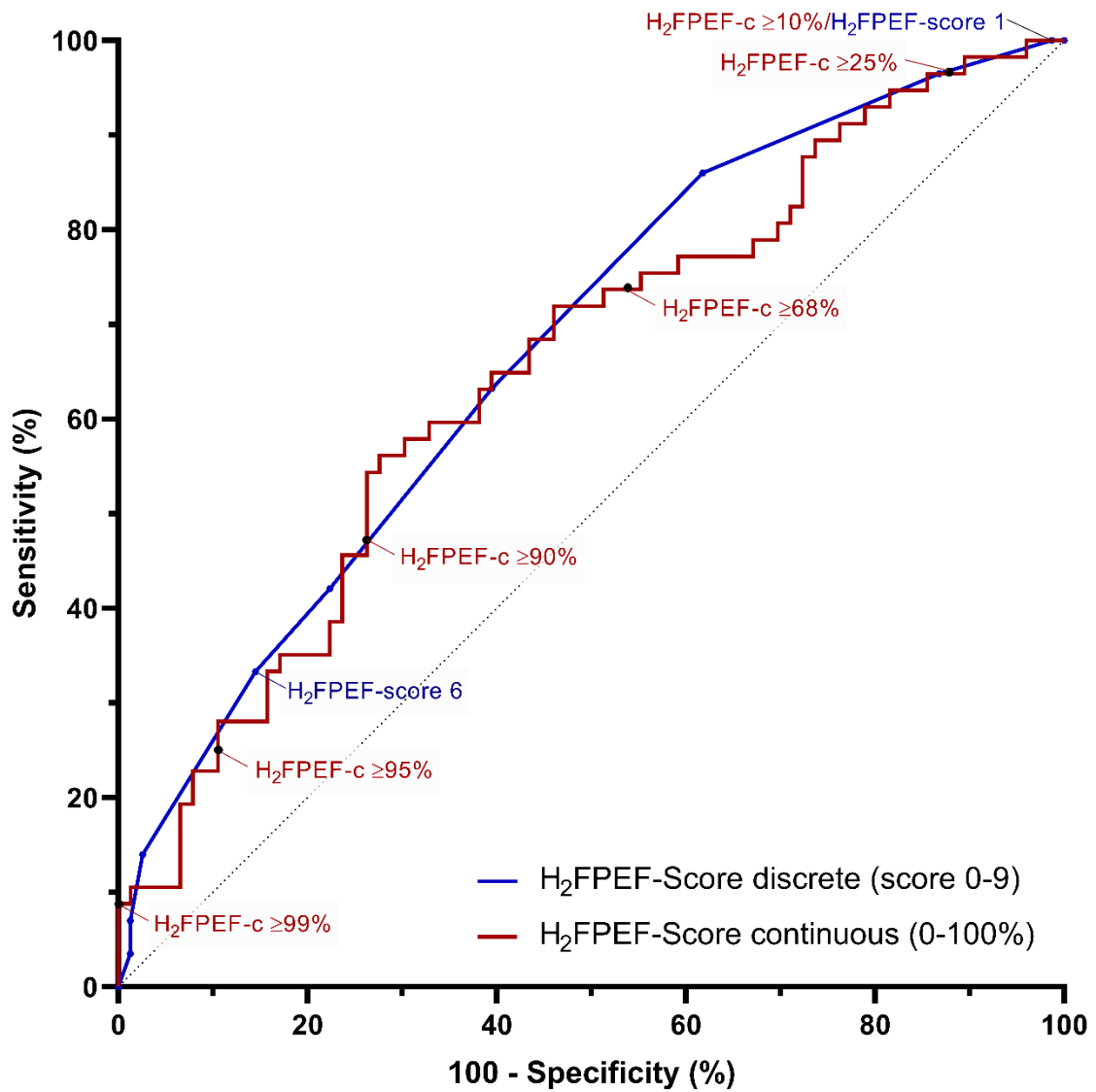


Figure S2. Regression plots individual echo-parameters



Regression plots are between PCWP and (A) e' septal; (B) e' lateral; (C) E; (D) E/A; (E) E/ e' average; (F) E/ e' septal; (G) peak tricuspid regurgitation velocity; (H) LAVi; (I) LAVi-min; and (J) LAEF. LAVi, indexed left atrial volume; LAVi-min, indexed minimal LA volume; LAEF, left atrial ejection fraction; PCWP, pulmonary capillary wedge pressure;

Figure S3. ROC-analysis of the discrete and continuous H₂FPEF-score



H₂FPEF-c, H₂FPEF-Score continuous.