

Additional file 2

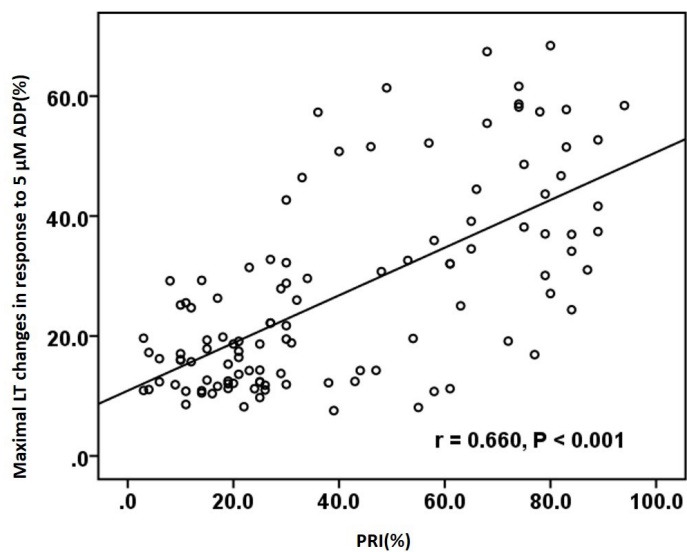


Fig. S2. Relationships between the results obtained by light transmittance aggregometry (maximal LT changes in response to 5 μM ADP, %) and vasodilator-stimulated phosphoprotein (VASP) (PRI, %) assay systems post-percutaneous coronary intervention (PCI). Correlation coefficient (r) was calculated using Pearson's method.