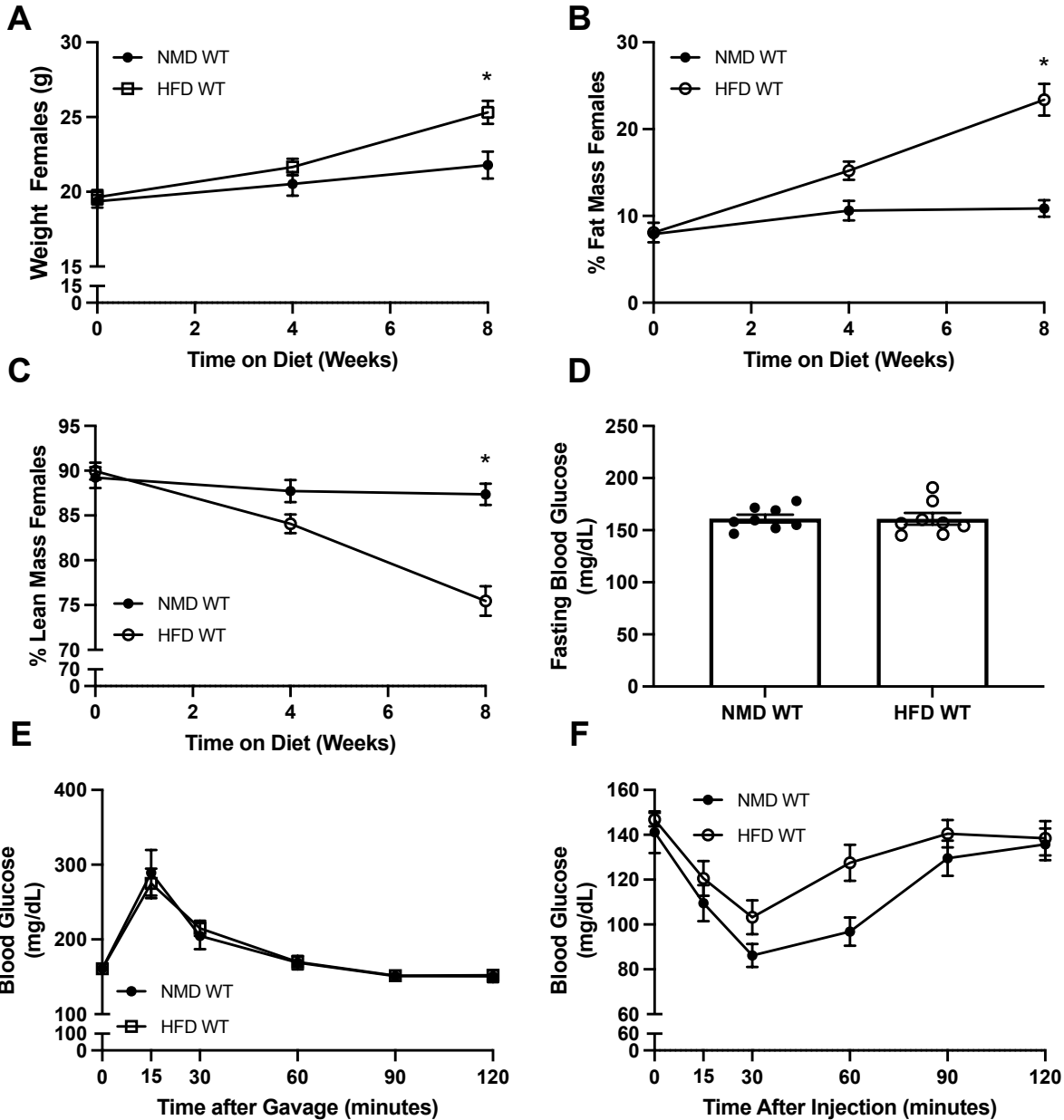
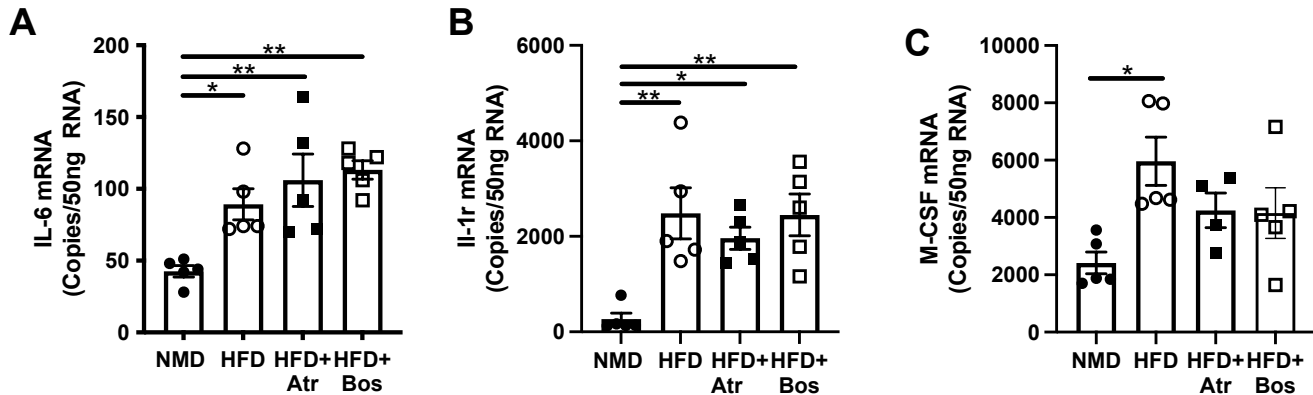


Supplemental Figure 1: Gating strategy for flow cytometry.



Supplemental Figure 2: (A) Body weight, (B) fat mass as percent of body weight, (C) lean mass as percent of body weight, (D) Fasting blood glucose, (E) glucose tolerance ($P_{\text{Diet}} = \text{ns}$), and (F) insulin tolerance ($P_{\text{Diet}} = \text{ns}$) of female C57Bl/6J mice fed NMD or HFD for 8 weeks. ($n=8$ per group). A-C and E-F were analyzed by two-way RM ANOVA. D were analyzed by Student's t test. Data are expressed as mean \pm SEM * $p < 0.05$.



Supplemental Figure 3: Gene expression of *Il-6*(A), *Il-1r*(B) and *M-Csf* (C) from eWAT of mice after 10 weeks on diet and two weeks of treatment with atrasentan or bosentan were determined via ddPCR (n=5 per group). Data were analyzed by One-Way ANOVA followed by Tukey's post-hoc test for multiple comparisons. Data are expressed as mean \pm SEM * p<0.05, ** p<0.01, *** p<0.001, **** p<0.0001.