

## **SUPPLEMENTAL MATERIAL**

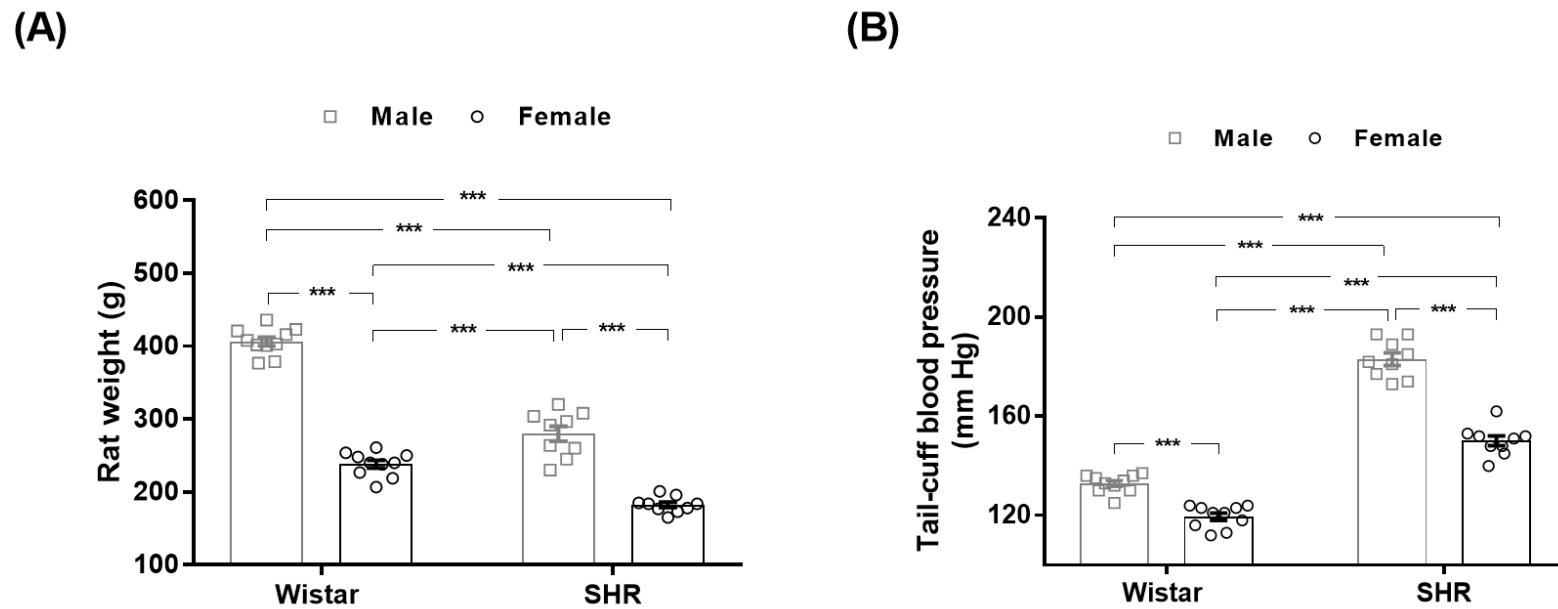
### **Sex differences in the lung ACE/ACE2 balance in hypertensive rats**

Flavia L. Martins<sup>1\*</sup>, Caio A. M. Tavares<sup>2\*</sup>, Pamella A. Malagrino<sup>1</sup>, Thiago Rentz<sup>1</sup>, Acaris Benetti<sup>1</sup>, Thiago M. S. Rios<sup>1</sup>, Gabriel M. D. Pereira<sup>1</sup>, Bruno Caramelli<sup>3</sup>, Samantha K. Teixeira<sup>1</sup>, José E. Krieger<sup>1</sup>, Adriana C. C. Girardi<sup>1</sup>

<sup>1</sup>Laboratory of Genetics and Molecular Cardiology, <sup>2</sup>Cardiogeriatric Unit, <sup>3</sup>Cardiology Interdisciplinary Medicine Unit, Heart Institute (InCor) – University of São Paulo Medical School, São Paulo, SP, Brazil

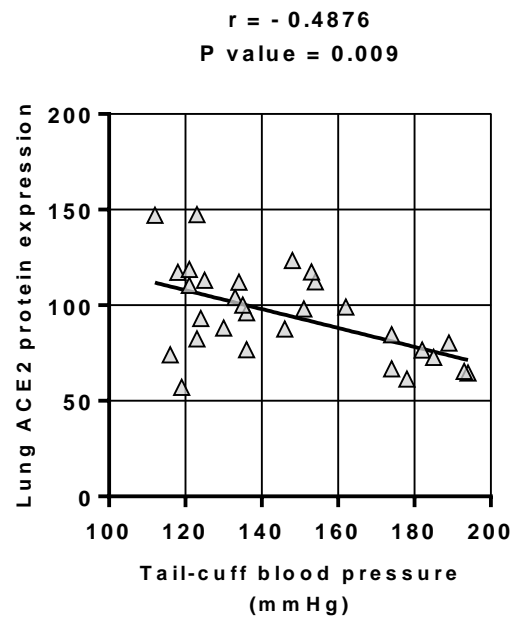
\* contributed equally to this work

Figure S1



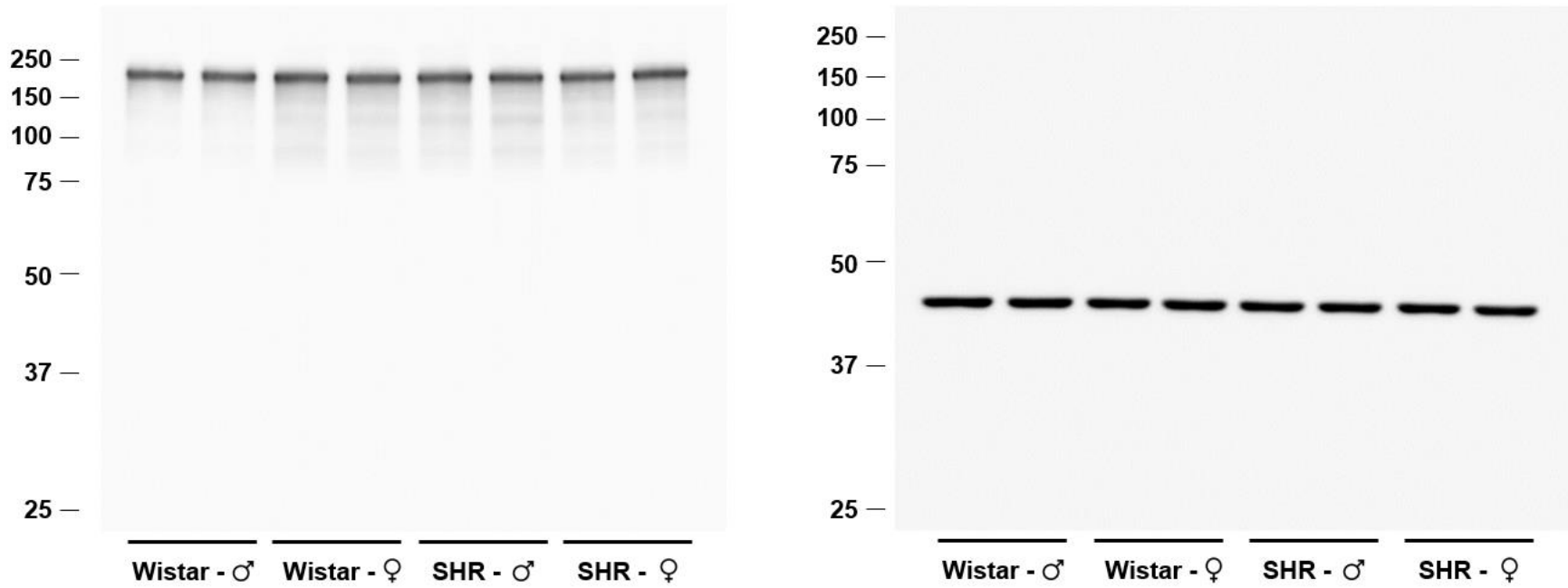
**Figure S1. Rat weight and tail-cuff blood pressure of male and female normotensive (Wistar) and hypertensive (SHR) rats. (A)** Rat weight and **(B)** tail-cuff blood pressure. Experimental n was indicated as scatter-dot, and the values represent individual measurements. Data were expressed as mean  $\pm$  SEM, and \*\*\* $P < 0.001$  were based on a two-way ANOVA and Tukey's multiple comparisons post-test.

**Figure S2**



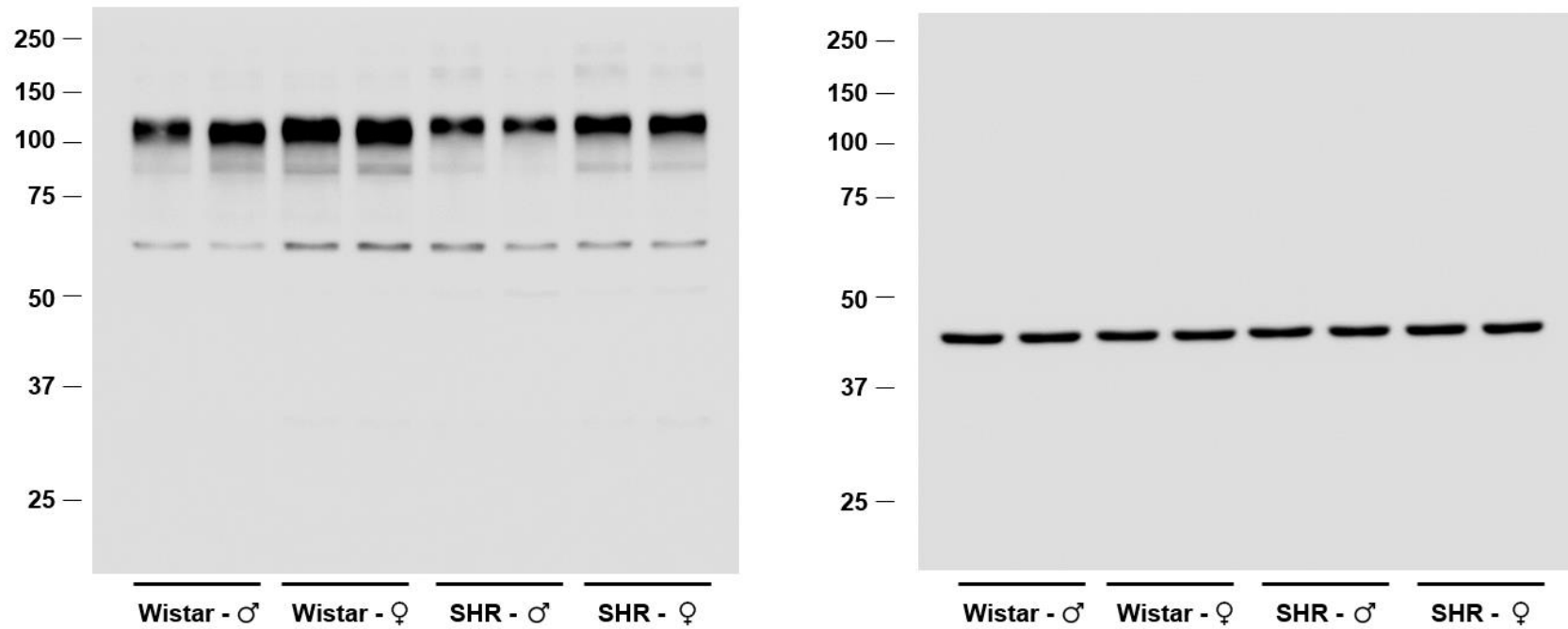
**Figure S2. The relationship between lung ACE2 protein abundance and blood pressure.** The correlation coefficient ( $r$ ) and P-value were obtained by Pearson's correlation test, and lines were obtained by linear regression plotting.

**Figure S3**



**Figure S3 – Full unedited gel for Figure 1D. Left panel: ACE and Right panel:  $\beta$ -actin, in the lung of male and female normotensive (Wistar) and hypertensive (SHR) rats. All lanes have been used to build Figure 1D.**

**Figure S4**



**Figure S4 – Full unedited gel for Figure 1E. Left panel: ACE2 and Right panel:  $\beta$ -actin, in the lung of male and female normotensive (Wistar) and hypertensive (SHR) rats. All lanes have been used to build Figure 1E.**

**Table S1 - Age and body mass index (BMI) of individuals present in the GTEx portal database and used for the analysis of pulmonary gene expression of ACE and ACE2**

		<b>Normotensive</b>	<b>Hypertensive</b>
	<b><i>n</i></b>	311	74
	<b>Male</b>	217	56
	<b>Female</b>	94	18
<b>Age</b>	<i>Average</i>	55.4	58.7
	<i>SD</i>	12.2	8.0
	<i>Max</i>	70.0	70.0
	<i>Min</i>	21.0	34.0
	<i>Median</i>	57.0	59.0
<b>BMI</b>	<i>Average</i>	27.7	28.3
	<i>SD</i>	4.2	3.8
	<i>Max</i>	35.0	34.9
	<i>Min</i>	17.0	19.0
	<i>Median</i>	27.9	28.3