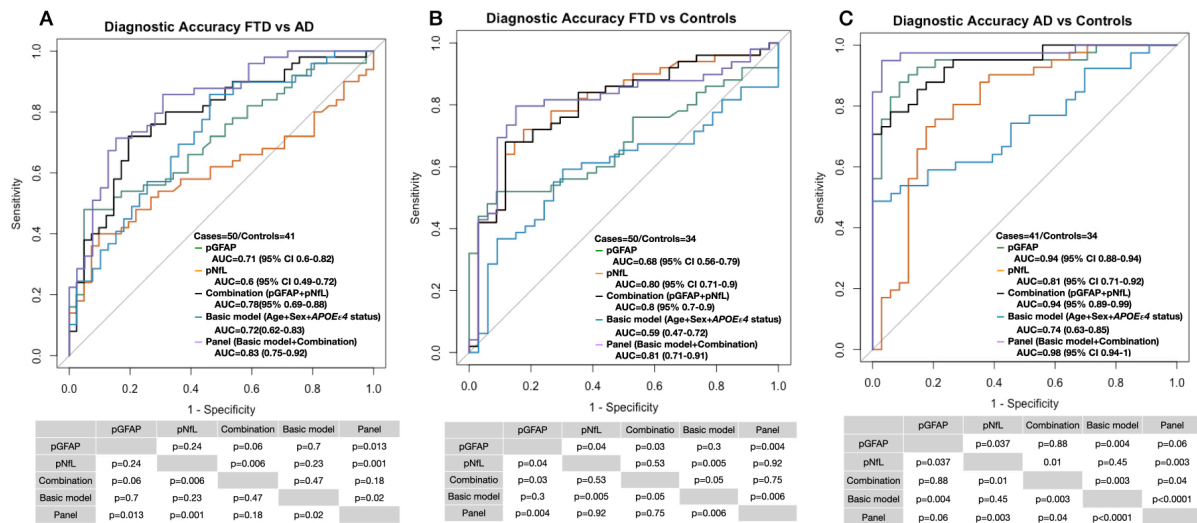


Additional data 1: Diagnostic accuracy of plasma biomarkers and their combination to differentiate between FTD, AD and CN in age-matched group



Receiver operating characteristic curves (ROC) for plasma GFAP, plasma neurofilament light, their combination, a basic model with risk factors (age, sex and APOE) and a combination of plasma biomarkers with additional risk factors to assess the accuracy to discriminate FTD from AD (A), FTD from normal cognitively normal (B), and AD from cognitively normal (C) in age matched group. Abbreviations: AUC = area under the curve; pGFAP = plasma Glial fibrillary acidic protein; pNfL = plasma Neurofilament light; FTD = Frontotemporal dementia; AD = Alzheimer’s Disease; CN = cognitively normal participants