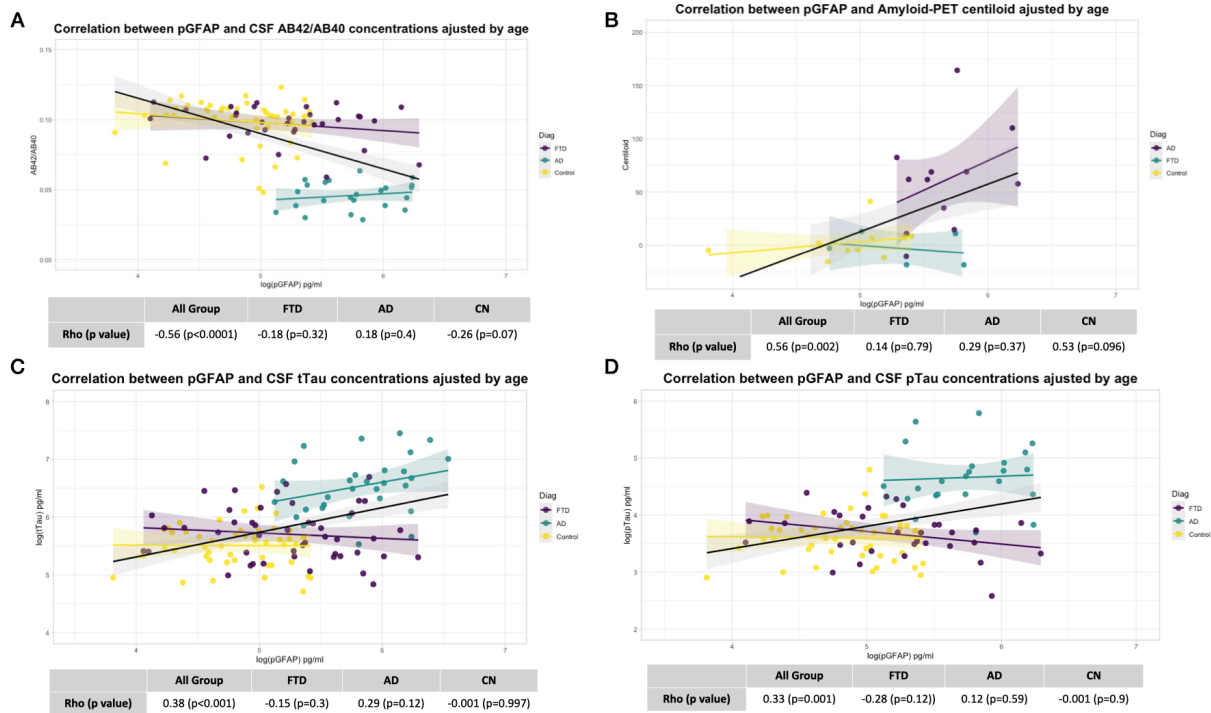


Additional data 2: The correlation of pGFAP with CSF AD-specific biomarkers



Correlation of pGFAP with CSF A β 42/A β 40 ratio (A), Amyloid-PET centiloid (B), CSF total Tau (C) and CSF phosphorylated Tau (D) in the whole sample, FTD, AD and normal cognitively. All the correlation analysis are adjusted by age and sex. Abbreviations: pGFAP = plasma Glial fibrillary acidic protein; AB42/AB40 = A β 42/A β 40 ratio; tTau = total Tau; pTau = phosphorylated Tau; FTD = Frontotemporal dementia; AD = Alzheimer's Disease; CN = Cognitively normal participants