

1 **Supplementary Information**

2 **3D bioprinting of a trachea-mimetic cellular construct of a clinically relevant size**

3 Jeong Hun Park<sup>1</sup>, Minjun Ahn<sup>1</sup>, Sun Hwa Park<sup>1</sup>, Hyeonji Kim, Mihyeon Bae, Wonbin Park,  
4 Scott J. Hollister<sup>\*</sup>, Sung Won Kim<sup>\*</sup>, and Dong-Woo Cho<sup>\*</sup>

5

6 <sup>1</sup> These authors contributed equally to this work.

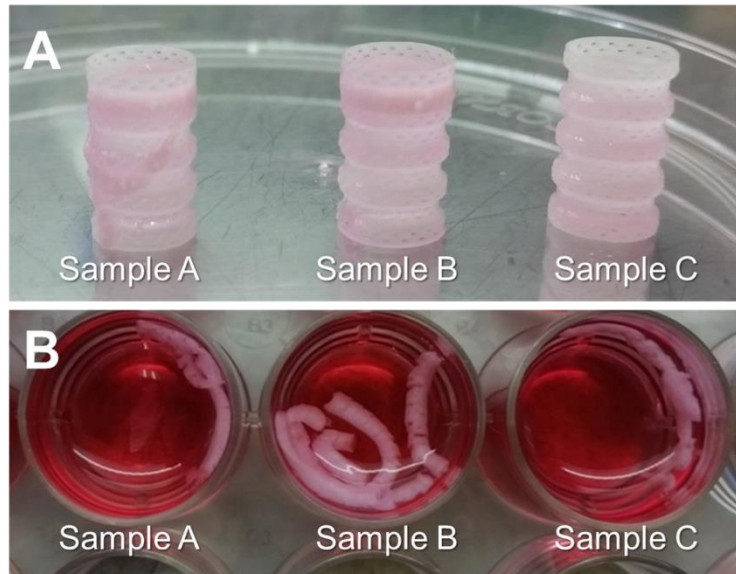
7 <sup>\*</sup> Corresponding authors:

8 Prof. Dong-Woo Cho, Ph.D. (E-mail: [dwcho@postech.ac.kr](mailto:dwcho@postech.ac.kr))

9 Prof. Sung Won Kim, Ph.D. (E-mail: [kswent@catholic.ac.kr](mailto:kswent@catholic.ac.kr))

10 Prof. Scott, J. Hollister, Ph.D. (E-mail: [scott.hollister@bme.gatech.edu](mailto:scott.hollister@bme.gatech.edu))

11



1  
2 **Fig. S1.** Poor hydrophilicity of tracheal construct printed with PCL. (A) Photograph of tracheal  
3 constructs with dislocated or detached cartilage rings after 3 days of culture *in vitro*. (B)  
4 Photograph of detached cartilage rings from tracheal constructs in the culture medium.  
5

1 **Table S1.** Sequences of primers applied in qRT-PCR analysis.

<b>Gene</b>	<b>Sequence</b>	
<b>GAPDH</b>	Forward	GTCTCCTCTGACTTCAACAGCG
	Reverse	ACCACCCTGTTGCTGTAGCCAA
<b>SOX9</b>	Forward	AGGAAGCTCGCGGACCAGTAC
	Reverse	GGTGGTCCTTCTTGTGCTGCAC
<b>ACAN</b>	Forward	AGTATCATCAGTCCCAGAAT
	Reverse	AATGCAGAGGTGGTTTCACT
<b>COL2</b>	Forward	CCTGGCAAAGATGGTGAGACAG
	Reverse	CCTGGTTTTCCACCTTCACCTG
<b>Mucin</b>	Forward	CCACTGGTTCTATGGCAACACC
	Reverse	GCCGAAGTCCAGGCTGTGCG
<b>Keratin-14</b>	Forward	TGCCGAGGAATGGTTCTTCACC
	Reverse	GCAGCTCAATCTCCAGGTTCTG
<b><math>\beta</math>-tubulin</b>	Forward	TTGGGAGGTCATCAGCGATGAG
	Reverse	AGGCTCCAGATCCACCAGGATG

2