

534 **Supplemental data**

535 **Figure S1. Confirmation of E6 and E7 expression in HPV cells**

536 Reverse transcription PCR (RT-PCR) analysis of HPV cells to confirm that they express
537 the viral oncogenes E6 and E7. RPE-1 cells transfected with the empty plasmid served
538 as the control.

539

540 **Figure S2. *Chlamydia* and HPV have additive effects on centrosome amplification**
541 **in A549 cells**

542 (A) RT-PCR of A549 cells that stably express HPV16 E6 and E7 to confirm viral
543 oncogene expression. Control cells are A549 cells transfected with an empty plasmid.

544 These cell lines were a generous gift from Dr. Ashok Aiyar, LSU

545 (B) The percentage of cells with supernumerary centrosomes for each of the four
546 experimental conditions is shown. 100 cells were analyzed for each condition at 36hpi.
547 Data are represented as mean \pm SD (n=3); ** $P \leq 0.01$, *** $P < 0.001$, ns: not statistically
548 significant.

549

550 **Figure S3. Multinucleation prevents cell cycle progression in *Chlamydia* cells but**
551 **not in HPV+*Chlamydia* cells**

552 Control or HPV cells, grown on coverslips, were infected with *C. trachomatis* at an MOI
553 of 3. Samples were incubated with EdU for 30 minutes prior to fixation at 36 hpi. The
554 percentage of either mono-nucleated or multinucleated EdU positive cells is shown. 60
555 cells were analyzed for each condition. Data are represented as mean \pm SD (n=2).

556

557 **Figure S4. The amplified centrosomes in *Chlamydia* cells contain mostly two**
558 **Cep164-positive mature centrioles**

559 HPV, *Chlamydia* and HPV+*Chlamydia* cells at 36 hpi were stained with antibodies to γ -
560 tubulin to detect centrosome amplification and Cep164 to mark mature mother
561 centrioles. The percentage of Cep164-positive centrioles is shown for those cells that
562 has amplified centrosomes ($n > 2$ γ -tubulin foci). 60 cells were analyzed for each
563 condition. Data are represented as mean \pm SD ($n=2$).

564

565

566

567

568

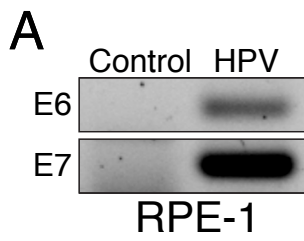
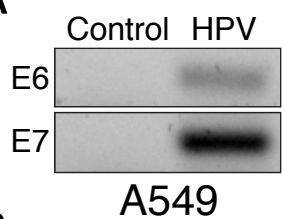


Figure S2

A



B

