

Figure S1. Function experiment of hsa_circ_0000745 in HMy2.CIR cells. Overexpression of hsa_circ_0000745 significantly inhibited the proliferation of HMy2.CIR cells. *P=0.034. CCK-8, Cell Counting Kit-8; OE, overexpression plasmid; OD, optical density.

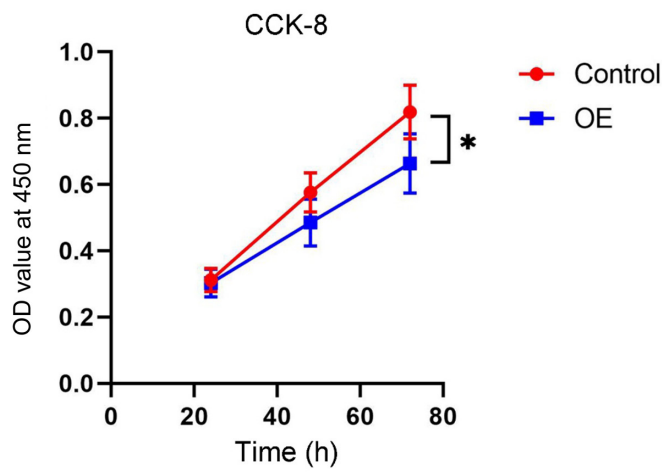


Figure S2. Validation of transfection efficiency in HMy2.CIR cells. Transfection efficiency was assessed via (A) fluorescence microscopy and (B) reverse transcription-quantitative PCR analysis. OE, overexpression plasmid; circRNA, circular RNA.

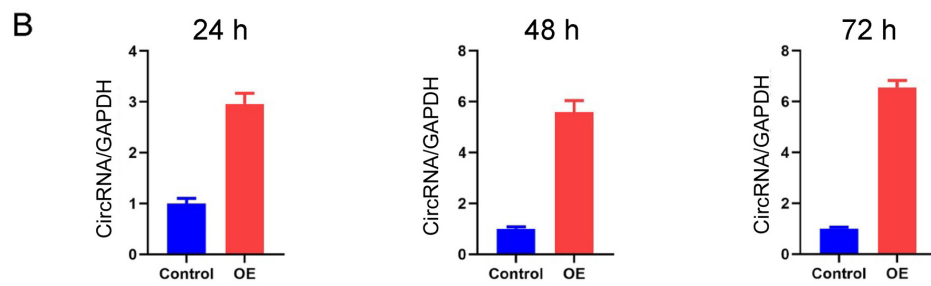
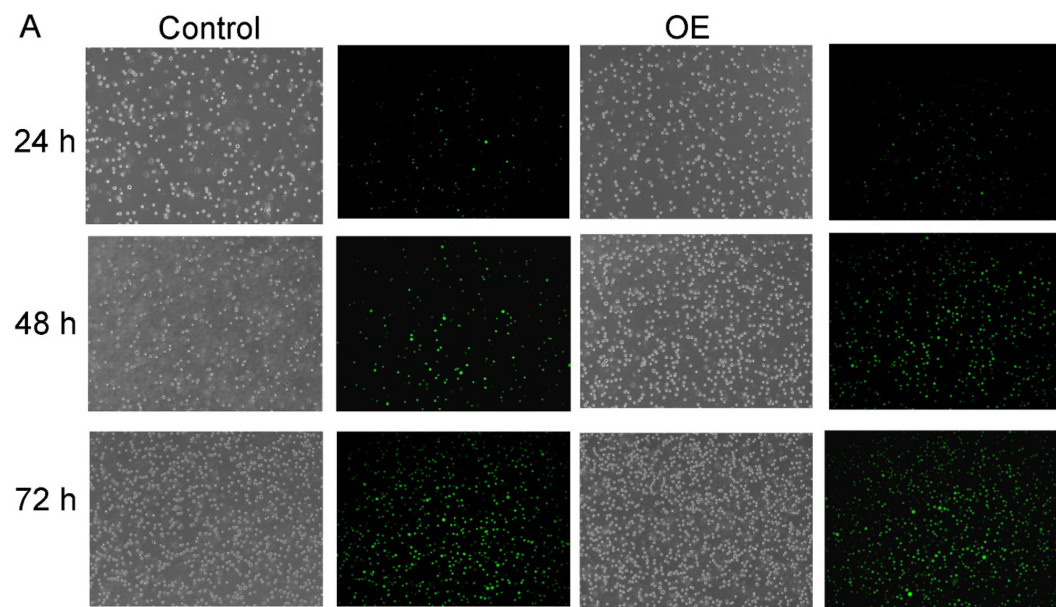


Table SI. Primer sequences used for quantitative PCR.

Number	circRNA ID	Forward (5'-3')	Reverse (5'-3')
1	hsa_circ_0104812	TCTACAGAAGGAAGCAGGCA	CTGGAGATTCACCCACCTGT
2	hsa_circ_0000745	AGGCAAACGGTGAAATTAACA	TGGCACAGACCTCTCTCTTG
3	chr15:87949594-87966067-	CAACTAACTTGGAGCCGTGT	TGGGCAGCAGTAATCTCCTT
4	chr15:87898780-87966067-	CTGAGAGAGGCTGGAAGGAA	TGGGCAGCAGTAATCTCCTT
5	hsa_circ_0006473	CTGATGAGGCCACAGGAAGA	TGCAGAATTCTCCAGGTCA
6	hsa_circ_0071106	TGTTTTGACATAGAAGCTGCTGA	TGCTTACTTGGATATCTGCCT
7	hsa_circ_0097878	GGAAGAAGTGCCTGATGACG	CAGAGGCTGGGTTCCCTAAA

Numbers 1-7 correspond to the numbers in Fig. 4. circRNA, circular RNA.

Table SII. Detailed characteristics of patients with B-ALL and controls.

Type	Diagnosis	Age, years	Sex	Percentage of blasts (%)
Patient 1	B-ALL	4	Male	83.45
Patient 2	B-ALL	4	Male	90.04
Patient 3	B-ALL	5	Male	92.87
Patient 4	B-ALL	7	Female	87.74
Patient 5	B-ALL	7	Female	89.63
Patient 6	B-ALL	8	Female	80.71
Control 1	ITP	4	Male	n/a
Control 2	SLE	4	Male	n/a
Control 3	ITP	5	Male	n/a
Control 4	ITP	6	Female	n/a
Control 5	ITP	6	Female	n/a
Control 6	SLE	8	Female	n/a

B-ALL, acute B-lymphocytic leukemia; ITP, idiopathic thrombocytopenic purpura; SLE, systemic lupus erythematosus.