

## **Clinical Experience with Ropeginterferon Alfa-2b in the Off-Label Use for the Treatment of COVID-19 Patients in Taiwan**

Kuan-Yuan Chen MD.<sup>1,2\*</sup>, Kang-Yun Lee MD PhD.<sup>1,2,6\*</sup>, Albert Qin MD PhD.<sup>3</sup>, Ching-Shan Luo MD.<sup>1,4</sup>, Yun-Kai Yeh MD.<sup>1</sup>, Jing-Quan Zheng MD.<sup>1,2</sup>, Ching-Mei Chen<sup>1</sup>, Chan-Yen Tsai PhD.<sup>3</sup>, Sheena Lin PhD.<sup>3</sup>, Jason Liao PhD.<sup>3</sup>, Yi-Wen Huang MD PhD.<sup>5,7</sup>, & Po-Hao Feng MD PhD.<sup>1,6</sup>

<sup>1</sup> Division of Pulmonary Medicine, Department of Internal Medicine, Shuang Ho Hospital, Taipei Medical University, Taipei, Taiwan

<sup>2</sup> Graduate Institute of Clinical Medicine, College of Medicine, Taipei Medical University, Taipei, Taiwan

<sup>3</sup> PharmaEssentia Corporation, Taipei, Taiwan

<sup>4</sup> International Ph.D. Program for Cell Therapy and Regeneration Medicine, College of Medicine, Taipei Medical University

<sup>5</sup> Division of Gastroenterology and Hepatology, Department of Internal Medicine, School of Medicine, College of Medicine, Taipei Medical University, Taipei, Taiwan

<sup>6</sup> Division of Pulmonary Medicine, Department of Internal Medicine, School of Medicine, College of Medicine, Taipei Medical University, Taipei, Taiwan

<sup>7</sup> Division of Gastroenterology and Hepatology, Department of Internal Medicine, School of Medicine, College of Medicine, Taipei Medical University, Taipei, Taiwan

\* These authors contribute equally

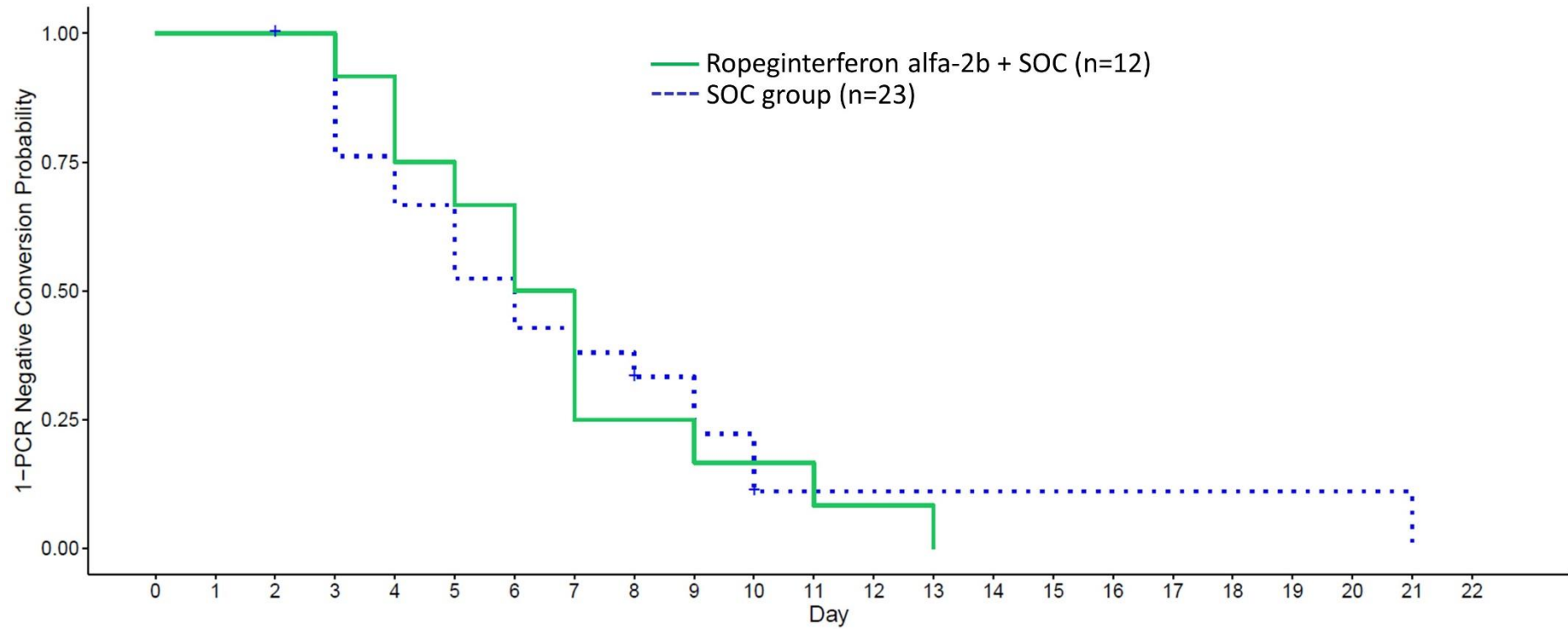
Corresponding authors

Po-Hao Feng M.D., Ph.D.

Division of Pulmonary Medicine, Department of Internal Medicine, School of Medicine, College of Medicine, Taipei Medical University, Taipei, Taiwan  
No.291, Zhongzheng Rd., Zhonghe District, New Taipei City, 23561, Taiwan

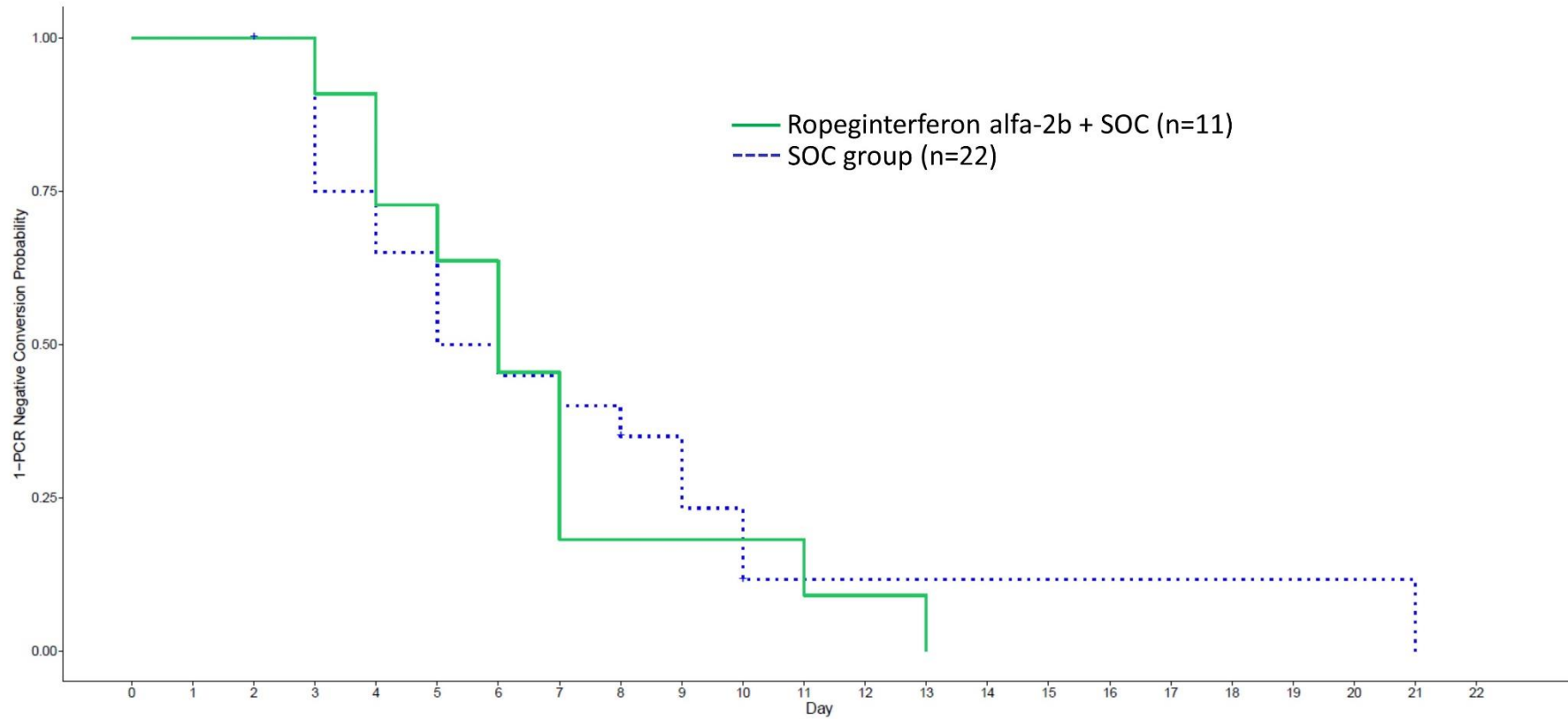
Email: pohao.feng@gmail.com

# Supplemental Figure 1



**Supplemental Figure 1:** Kaplan-Meier Curve for RT-PCR Negative Conversion Probability in Patients with Mild Disease.

## Supplemental Figure 2



**Supplemental Figure 2:** Kaplan-Meier Curve for RT-PCR Negative Conversion Probability in Patients with Mild Disease and Age  $\leq 65$  Years.