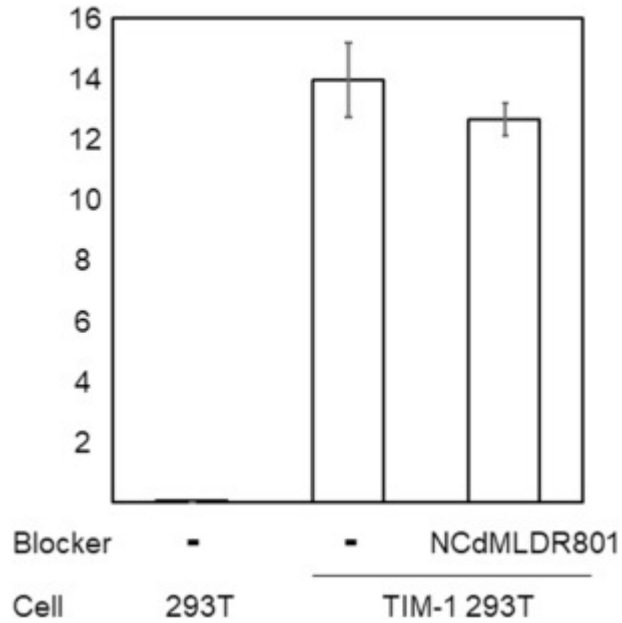


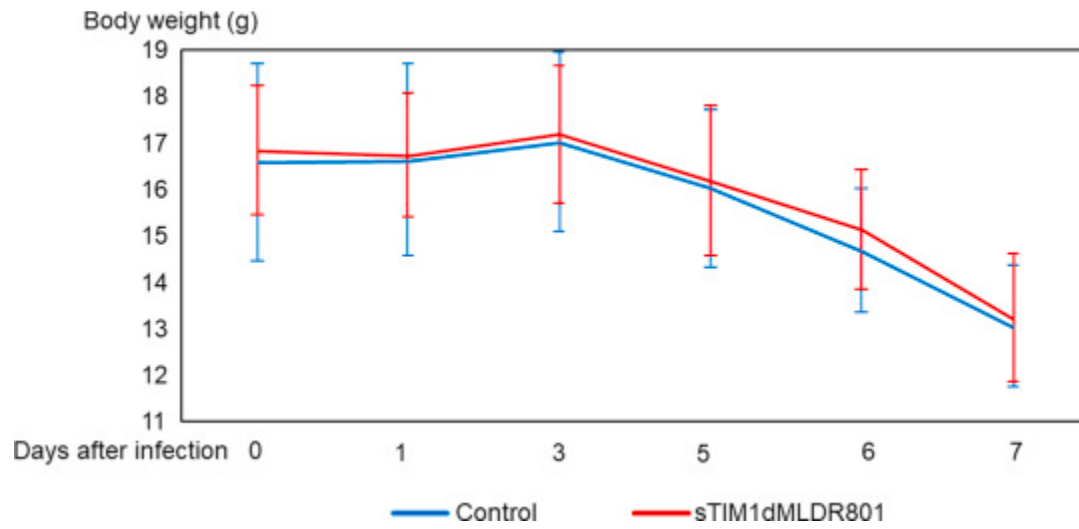
Appendix A. Supplementary data

The following are the Supplementary data to this article:

% Infected cells



FigS1. The effects of NCdMLDR801 on TIM-1-mediated ZIKV infection. ZIKV replicon was incubated with 30 $\mu\text{g/ml}$ of NCdMLDR801 or control medium for 1 h at room temperature. 293T or TIM-1 293T cells were infected with the incubated virus for 2 h, and the infections were analyzed by flow cytometry 24 h post-infection. The results shown are averages and standard deviations of the triplicate experiment.



FigS2. Change of body weight after ZIKV infection.