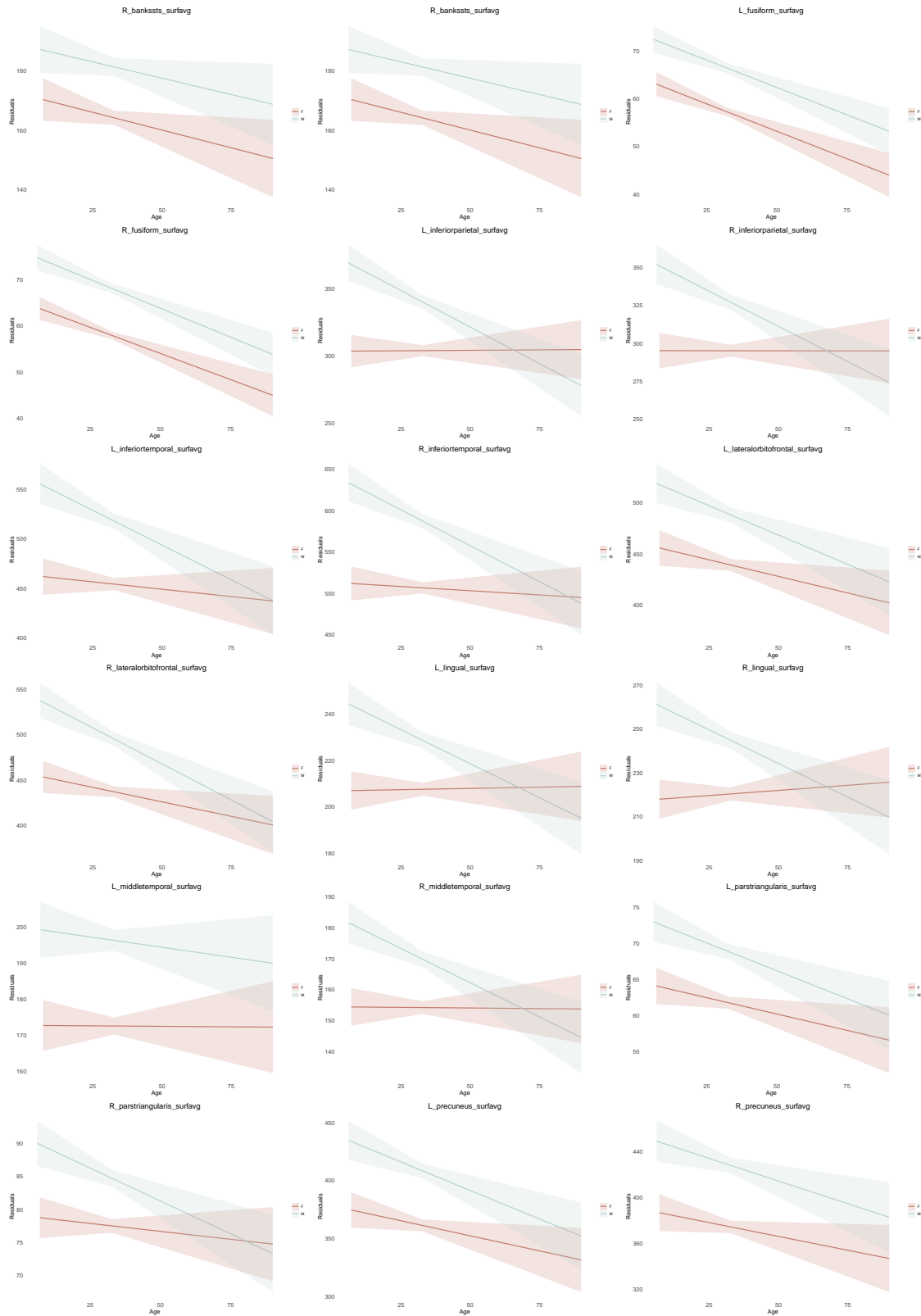
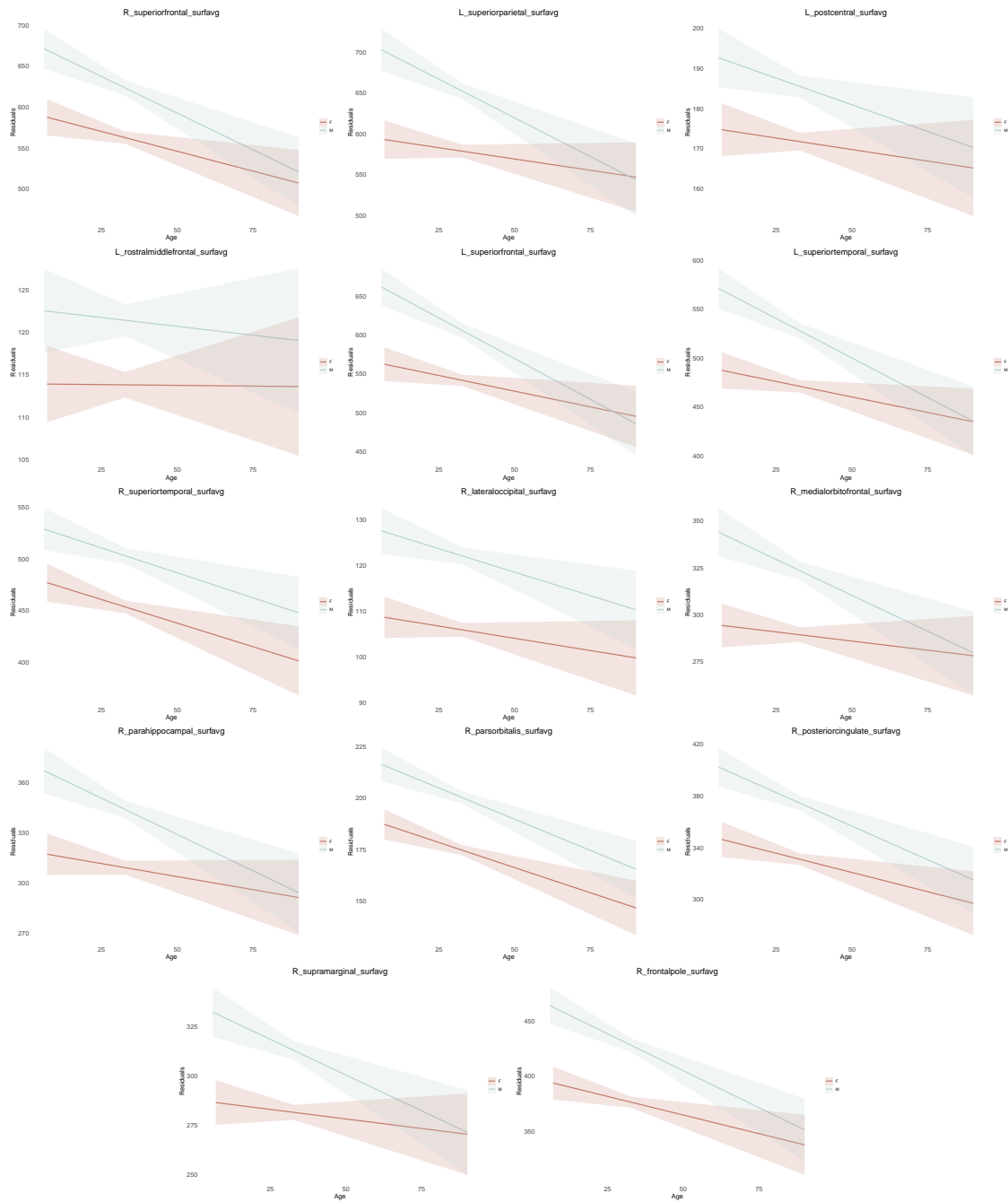


Supplemental Figure 3A. Sex differences in variability interacted with age in 50% of the subcortical volumes. Absolute residual values are modeled across the age range. Effects showed larger male than female variance in the younger age group, and a general trend of decreasing sex differences in variance with increasing age.



Supplemental Figure 3B-1. Sex differences in variability interacted with age in 30 of cortical surface areas. Absolute residual values modeled across the age range. Effects showed larger male than female variance in the younger age group, and general trend of decreasing sex differences in variance with increasing age.



Supplemental Figure 3B-2. Sex differences in variability interacted with age in 30% of cortical surface area measures. Absolute residual values are modeled across the age range. Effects showed larger male than female variance in the younger age group, and a general trend of decreasing sex differences in variance with increasing age.