

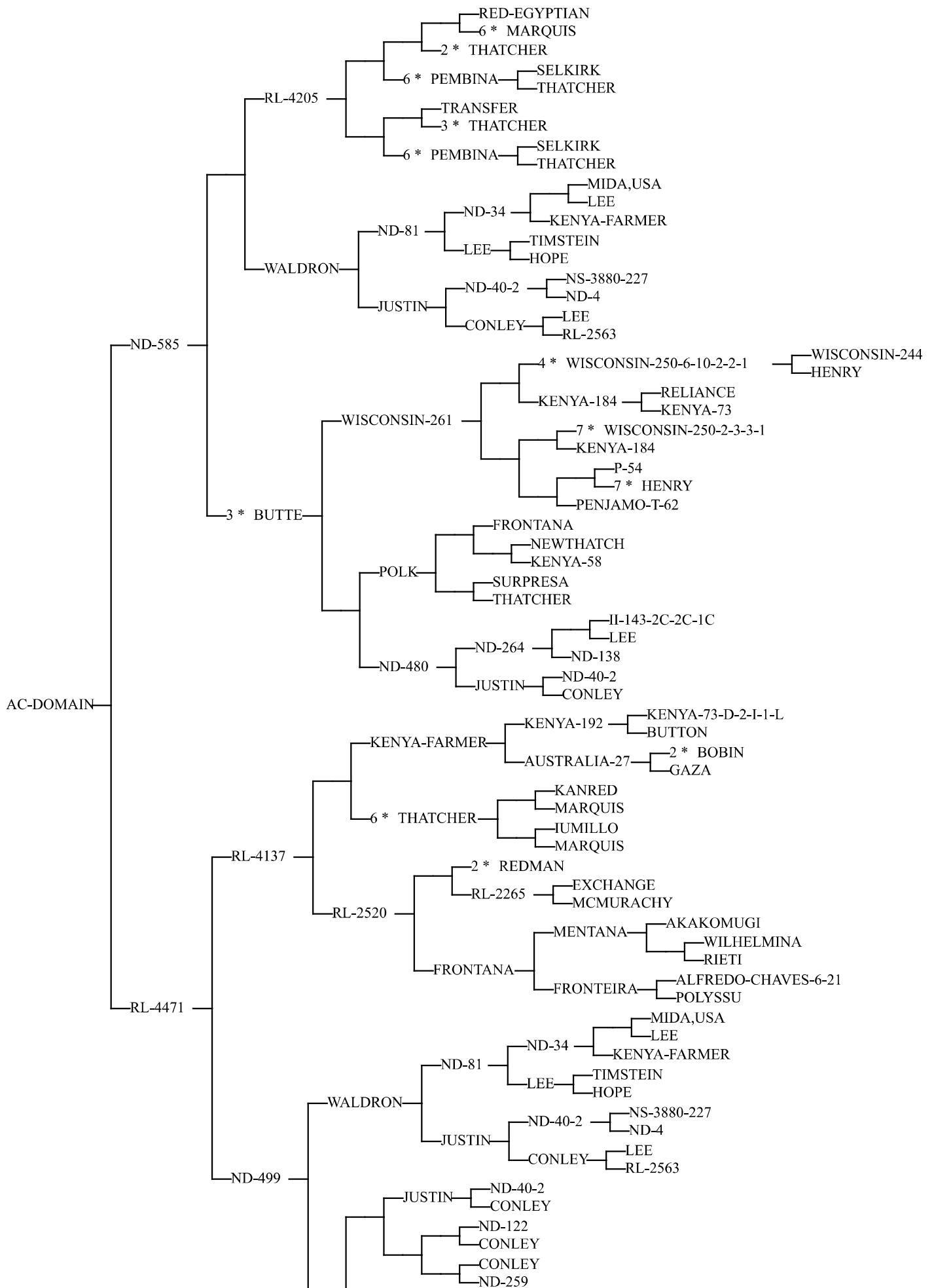
Pedigrees of different wheat genotypes of different origin.

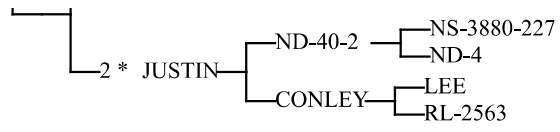
Downloaded from: wheatpedigree.net/

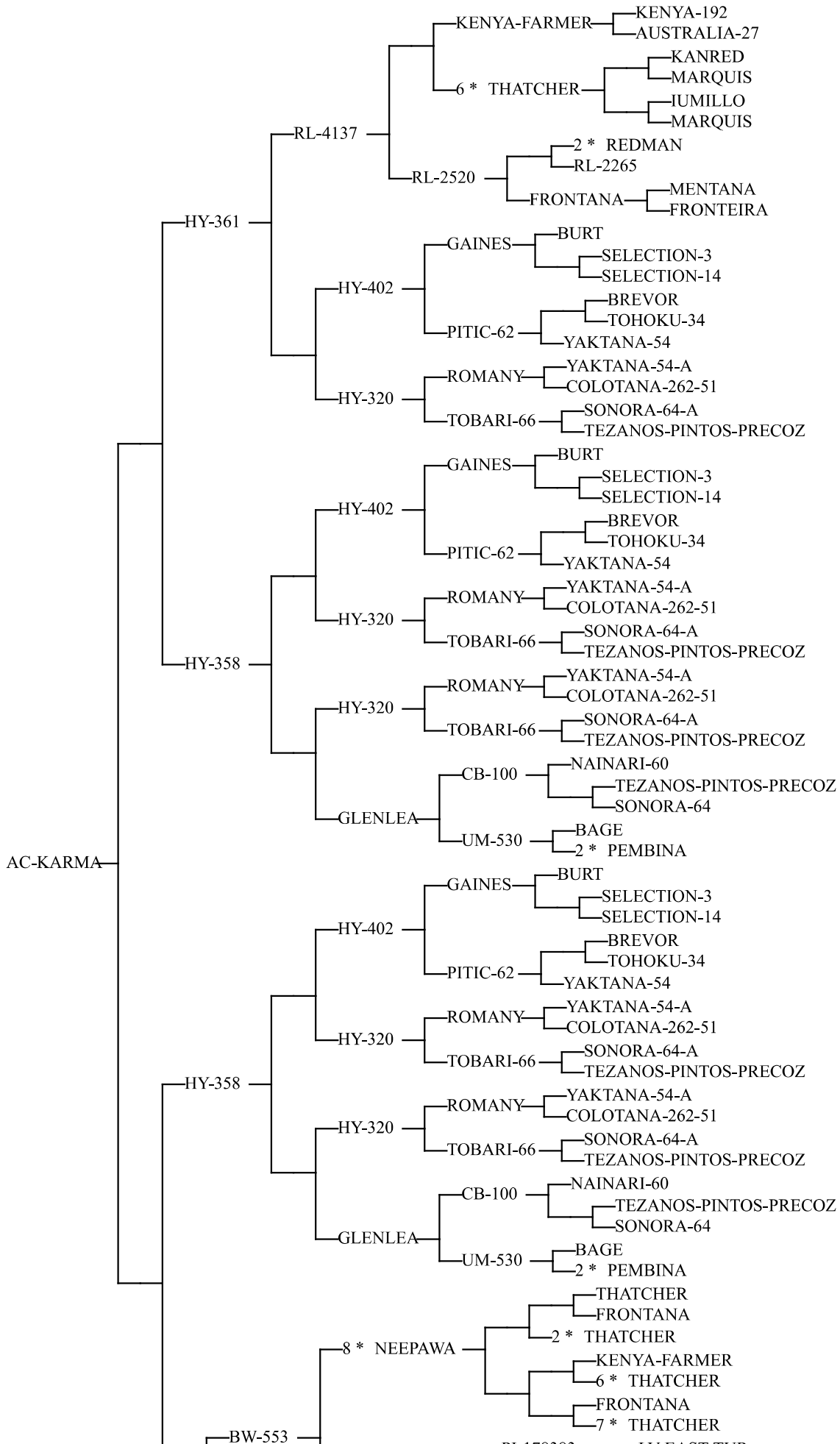
Osanai et al. 2015. *Euphytica* (2005) 143: 301-307.

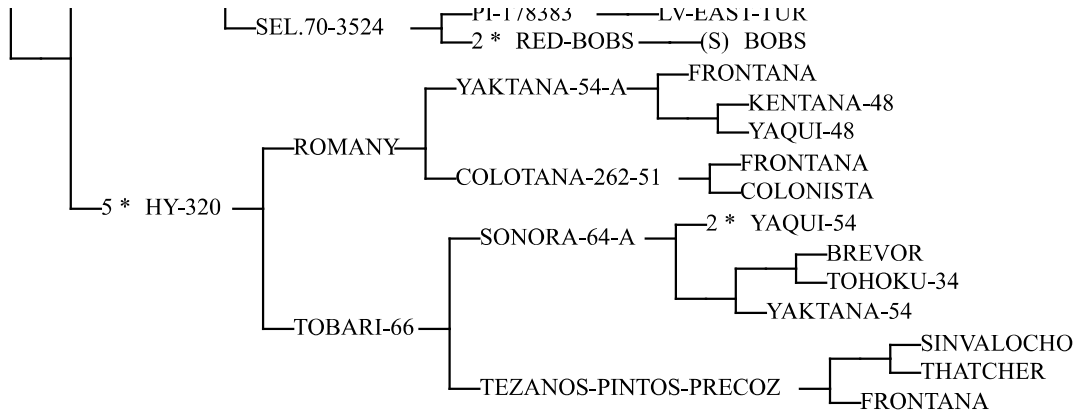
Garlinge, J. (2005), **2005 Crop variety sowing guide for Western Australia. Department of Agriculture and Food, Western Australia, Perth. Bulletin 4655.**

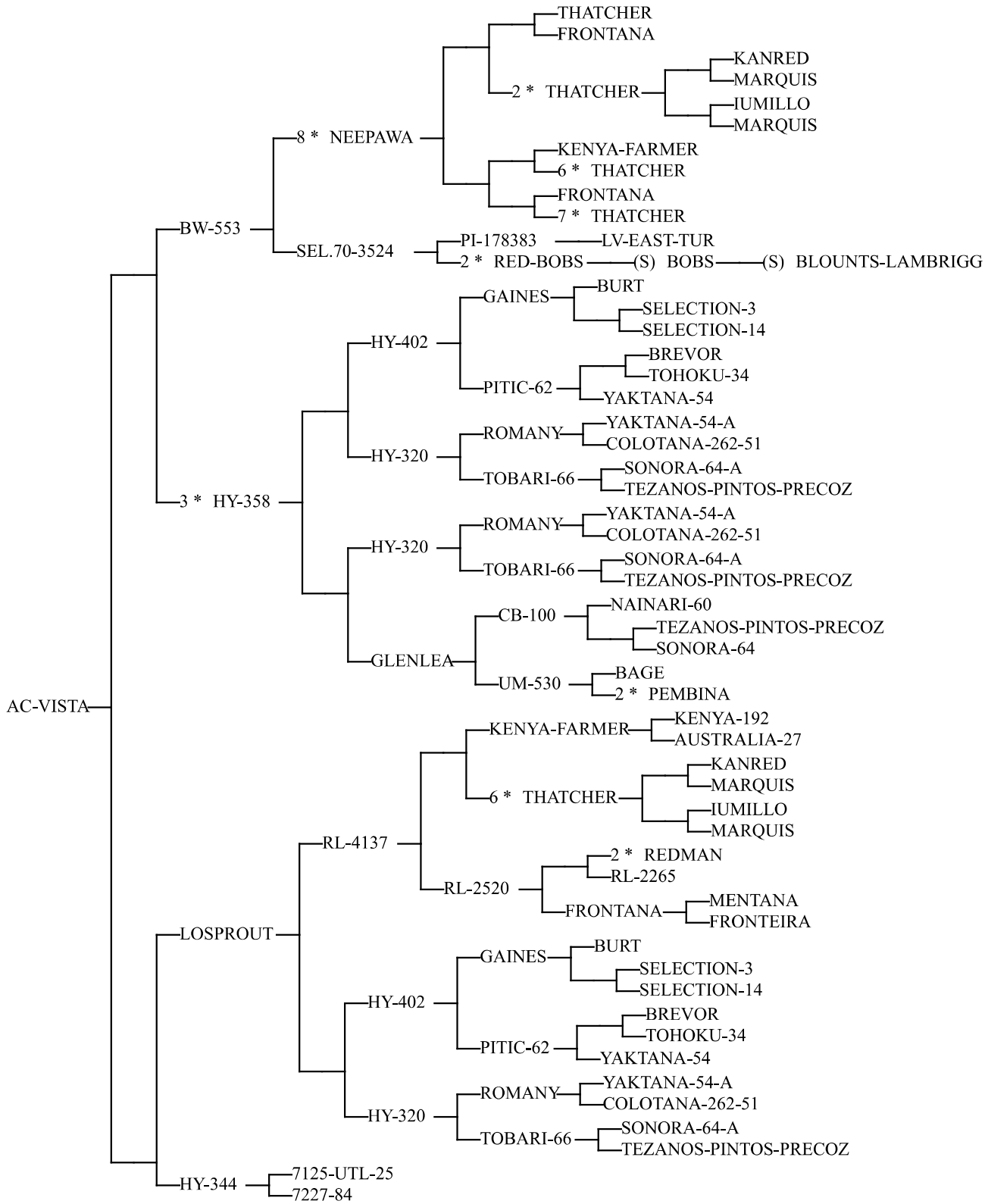
on: 11/19/2020

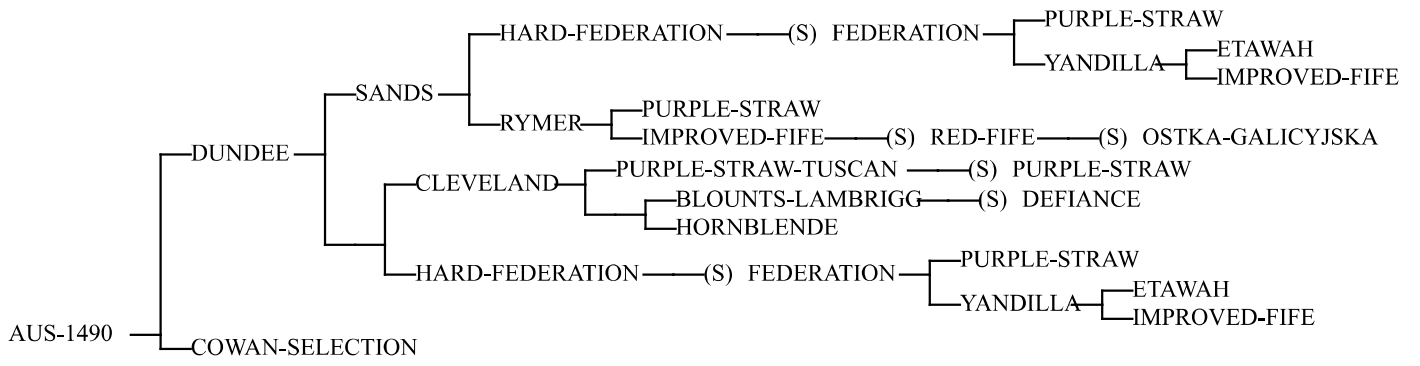


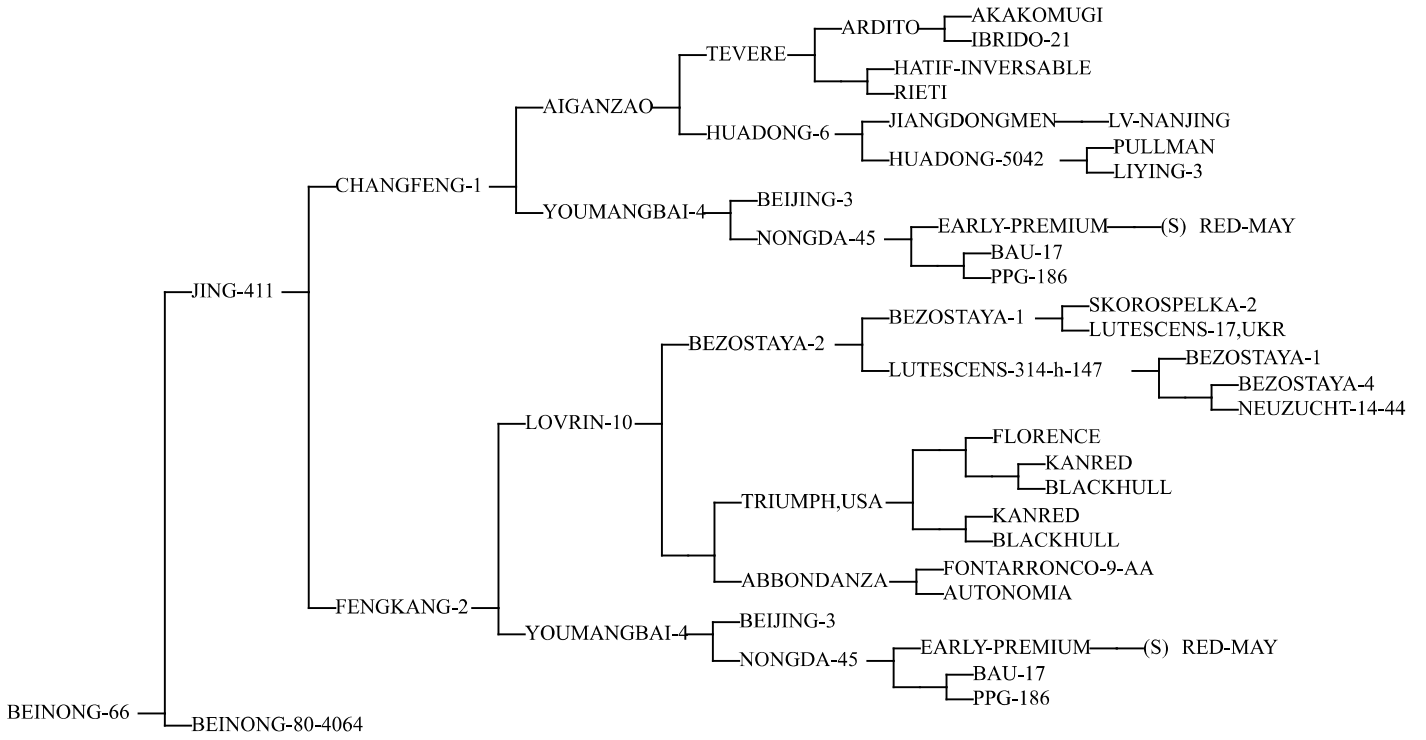


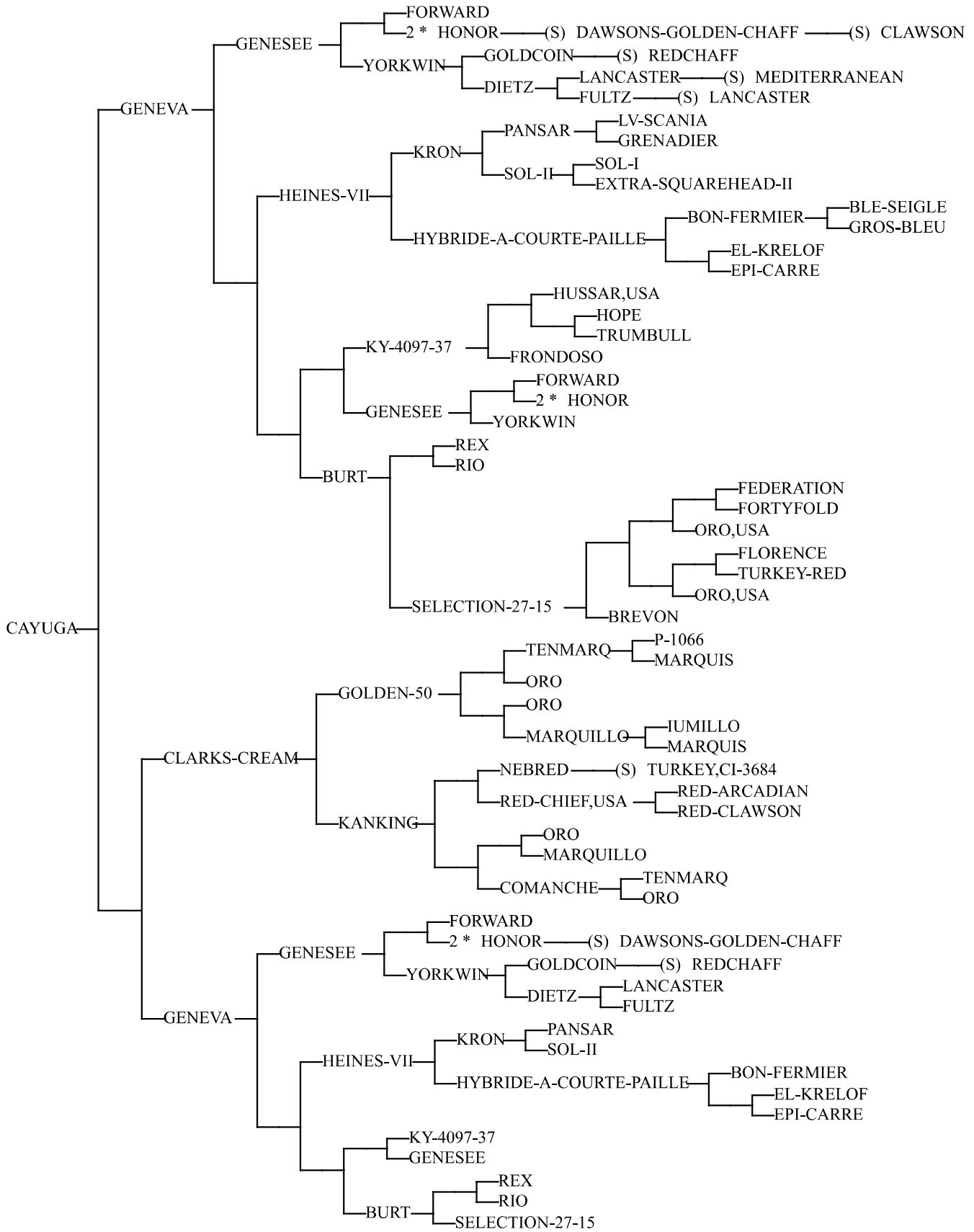


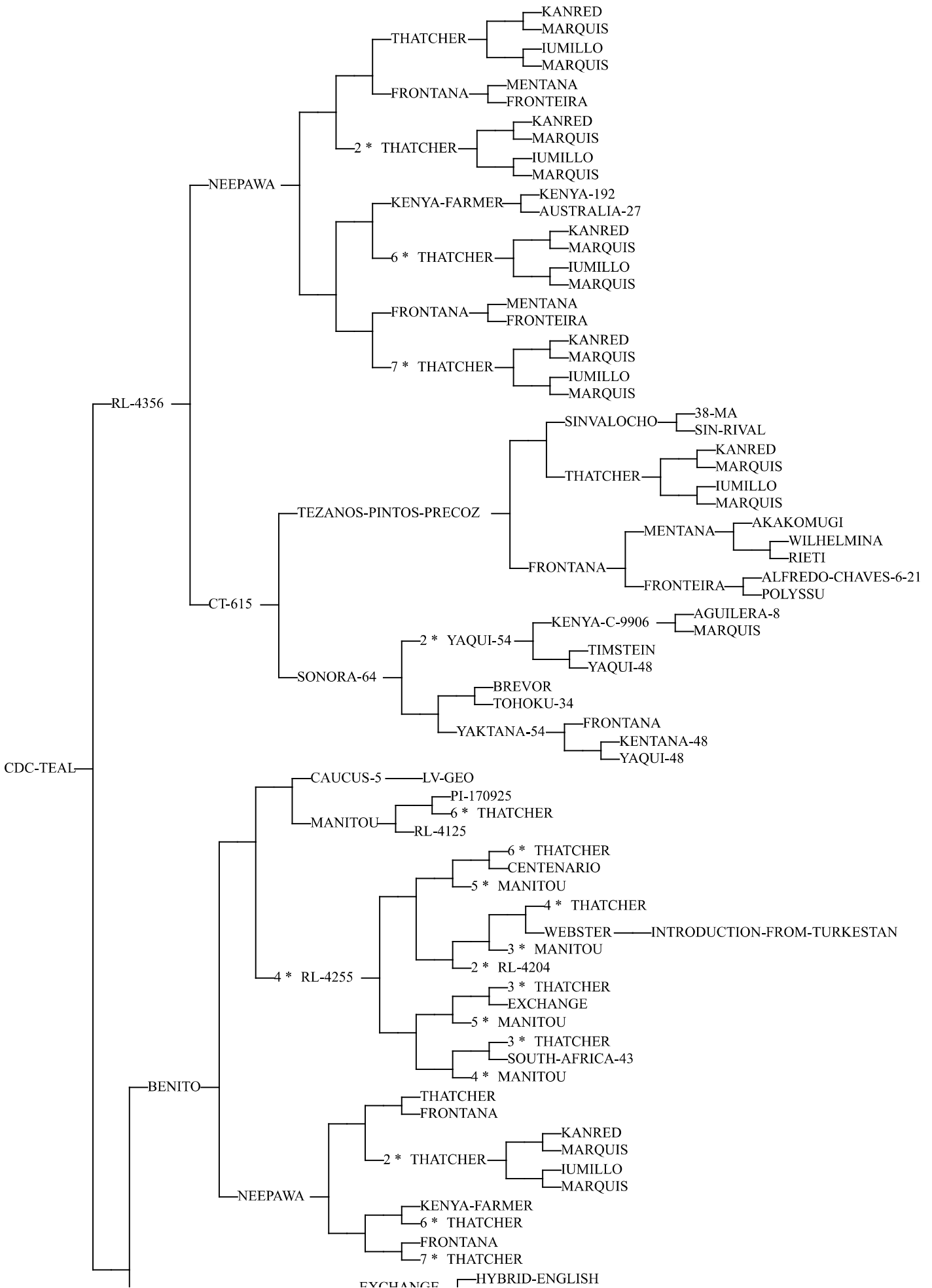


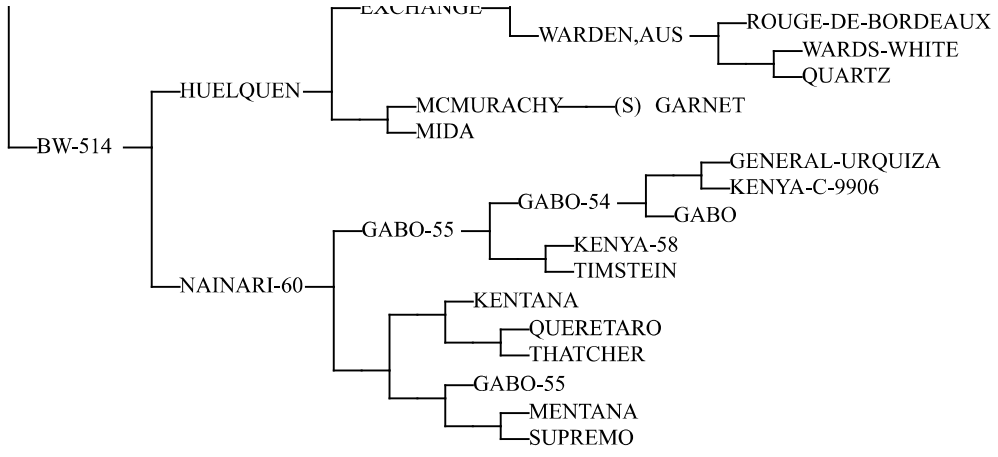




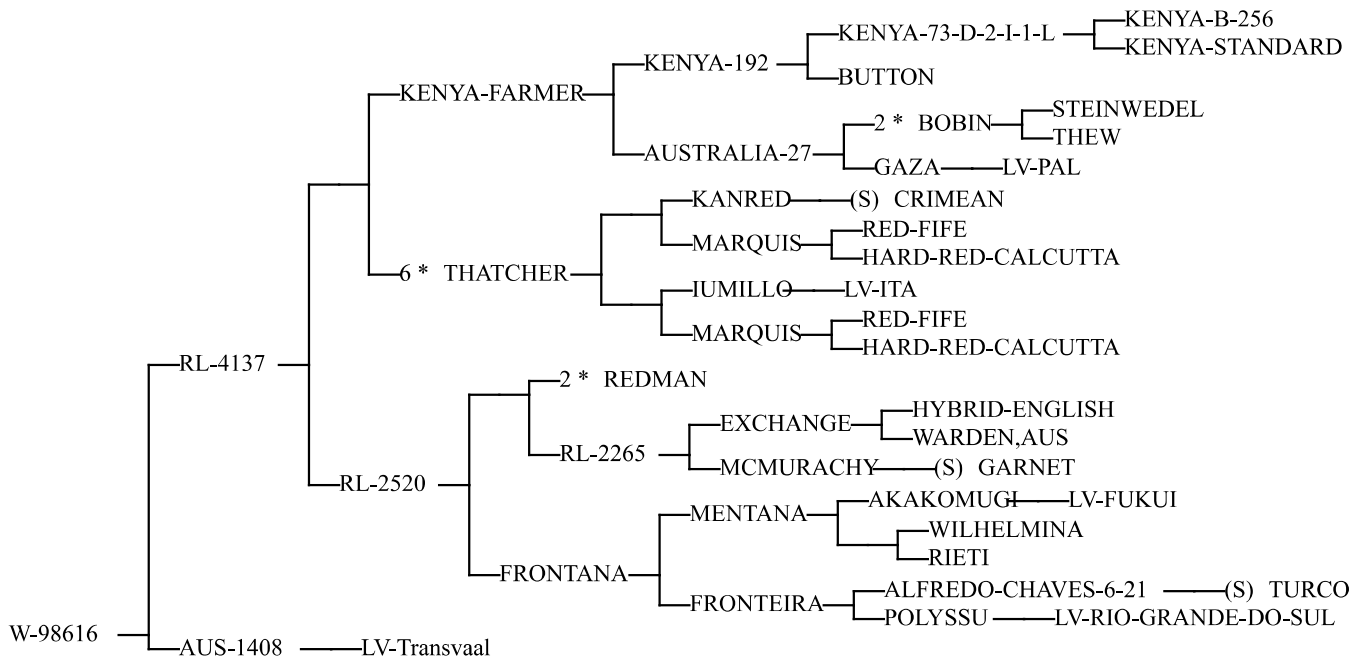


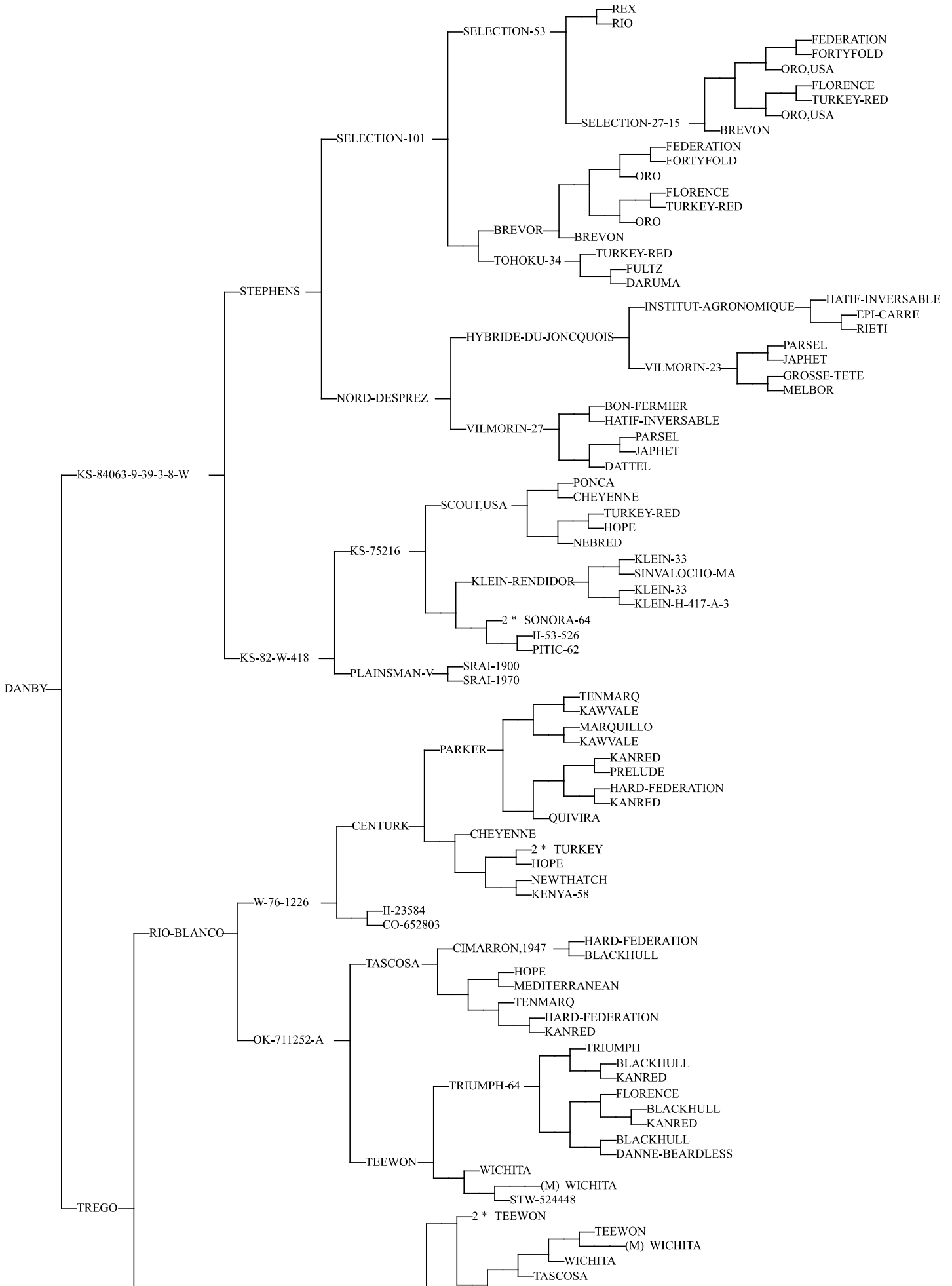


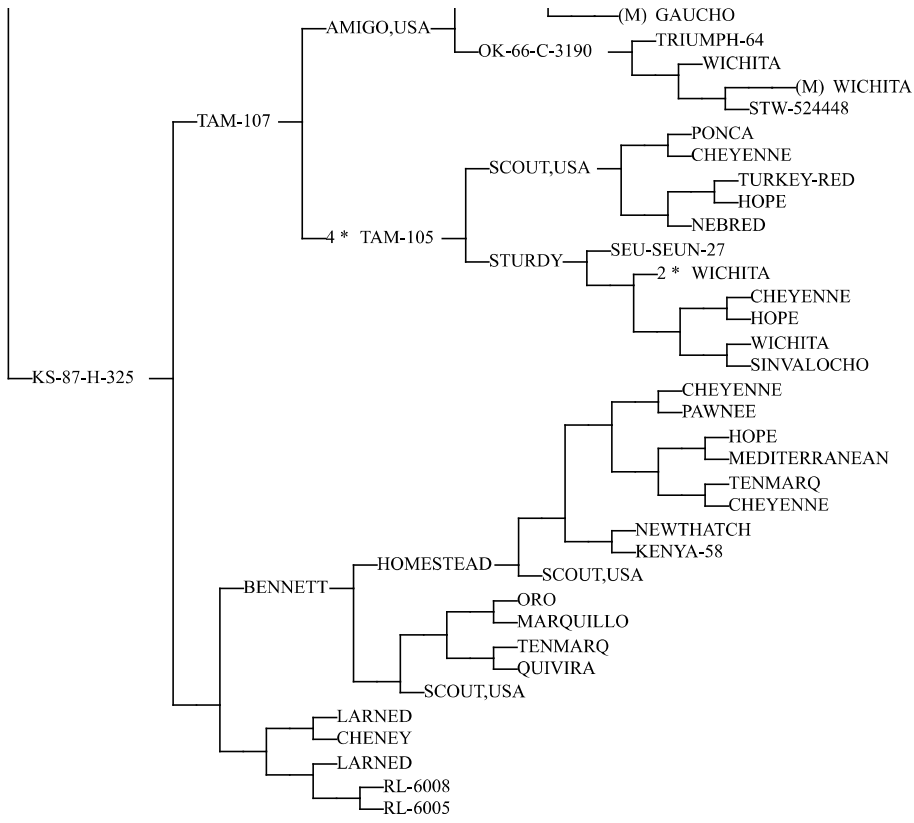


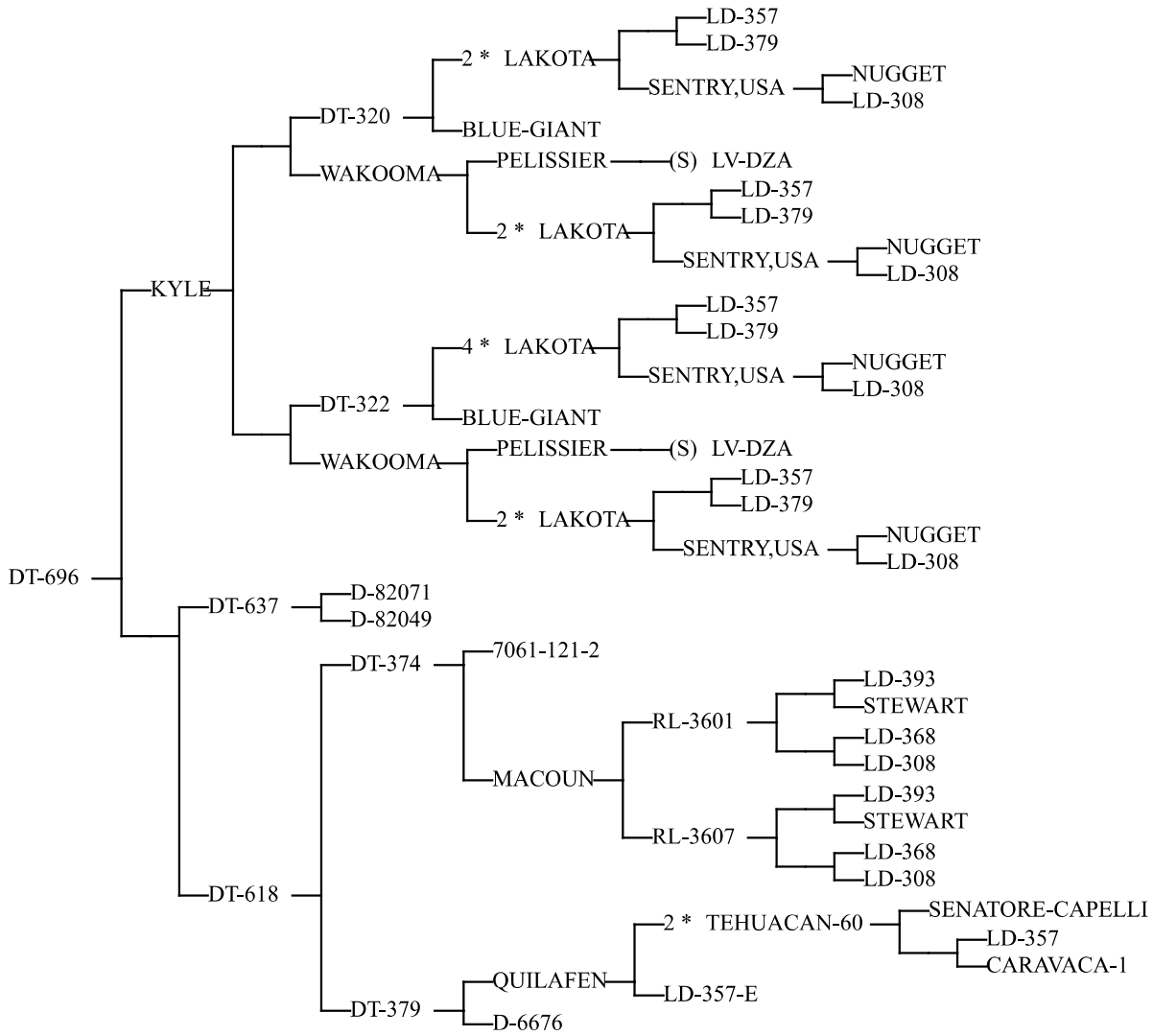


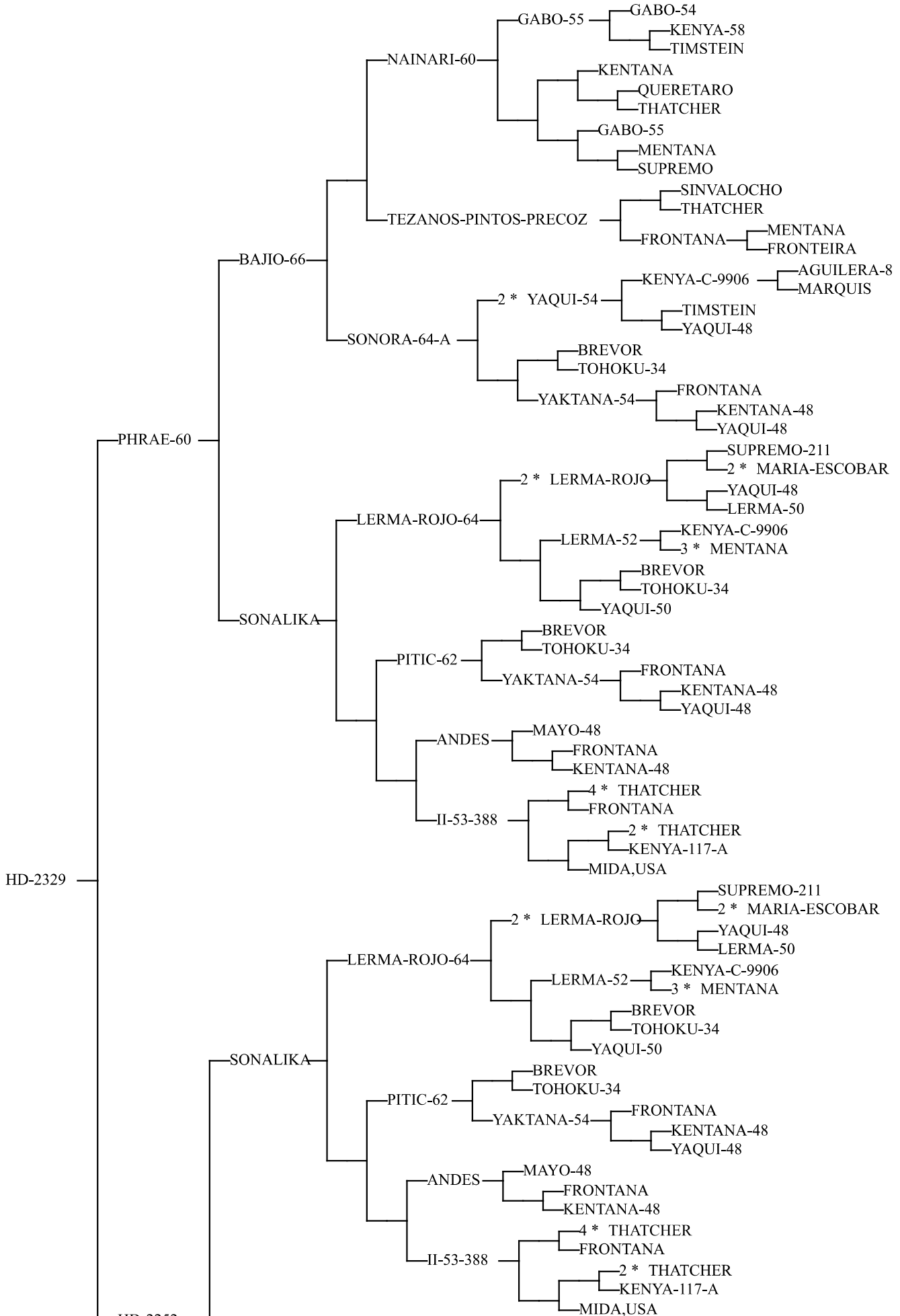
CHINESE-SPRING ———LV-WEST-SZECHUAN

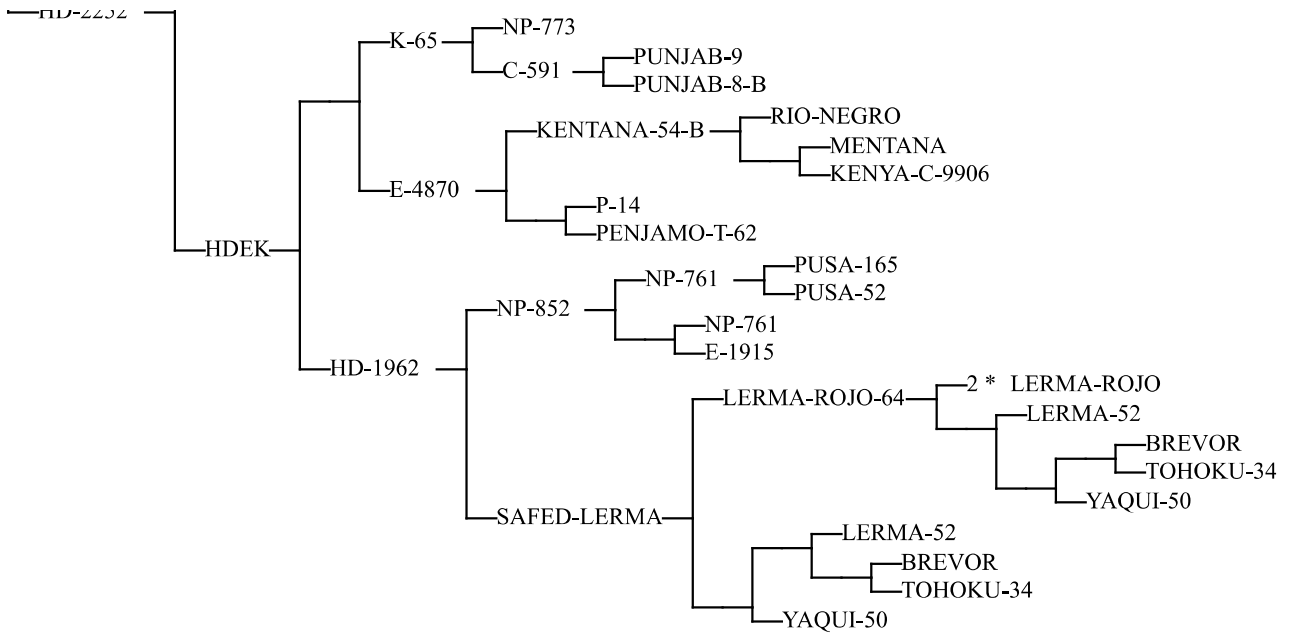


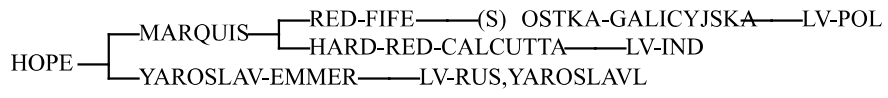


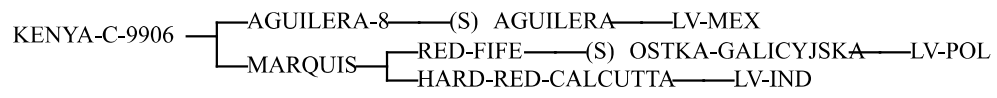


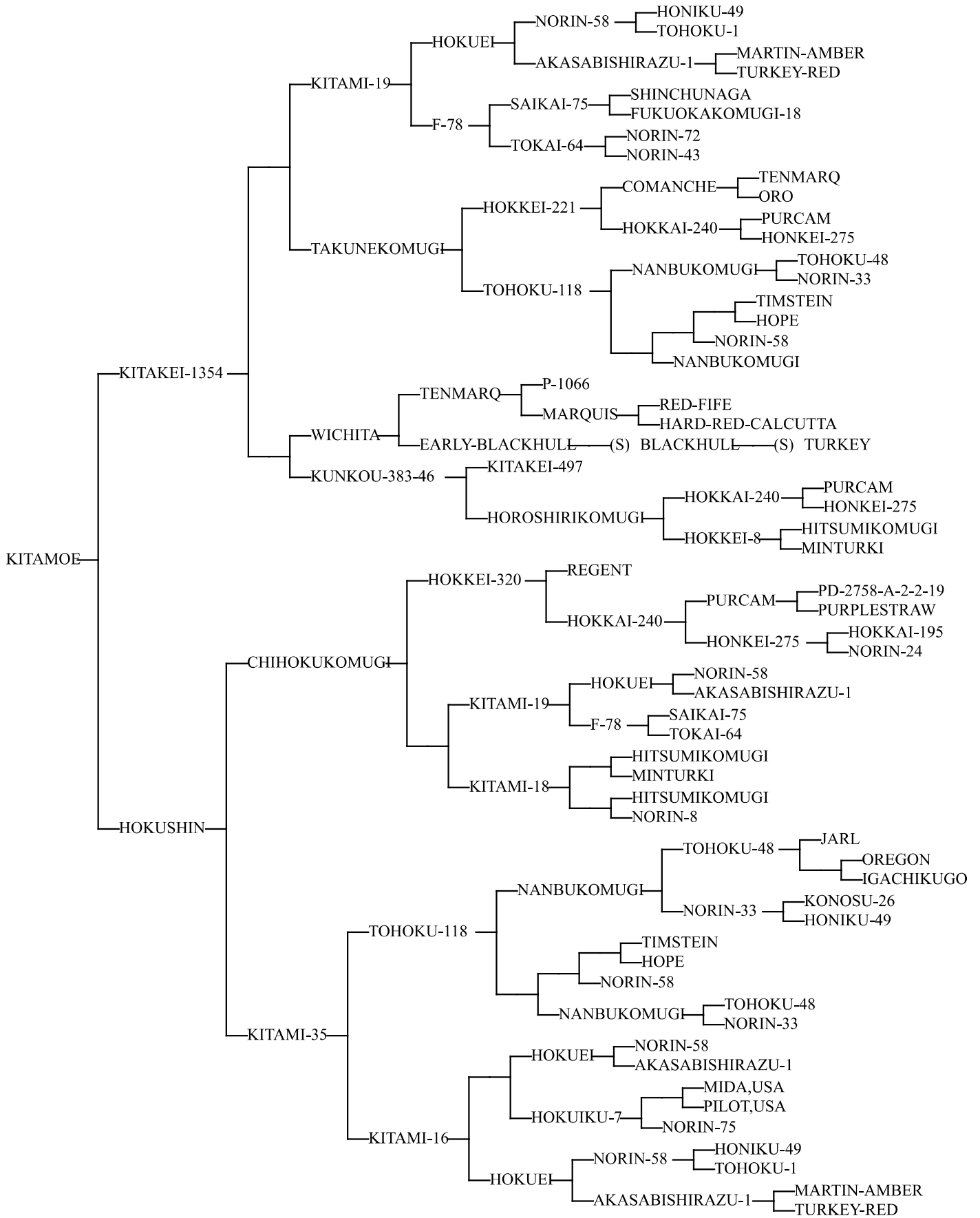


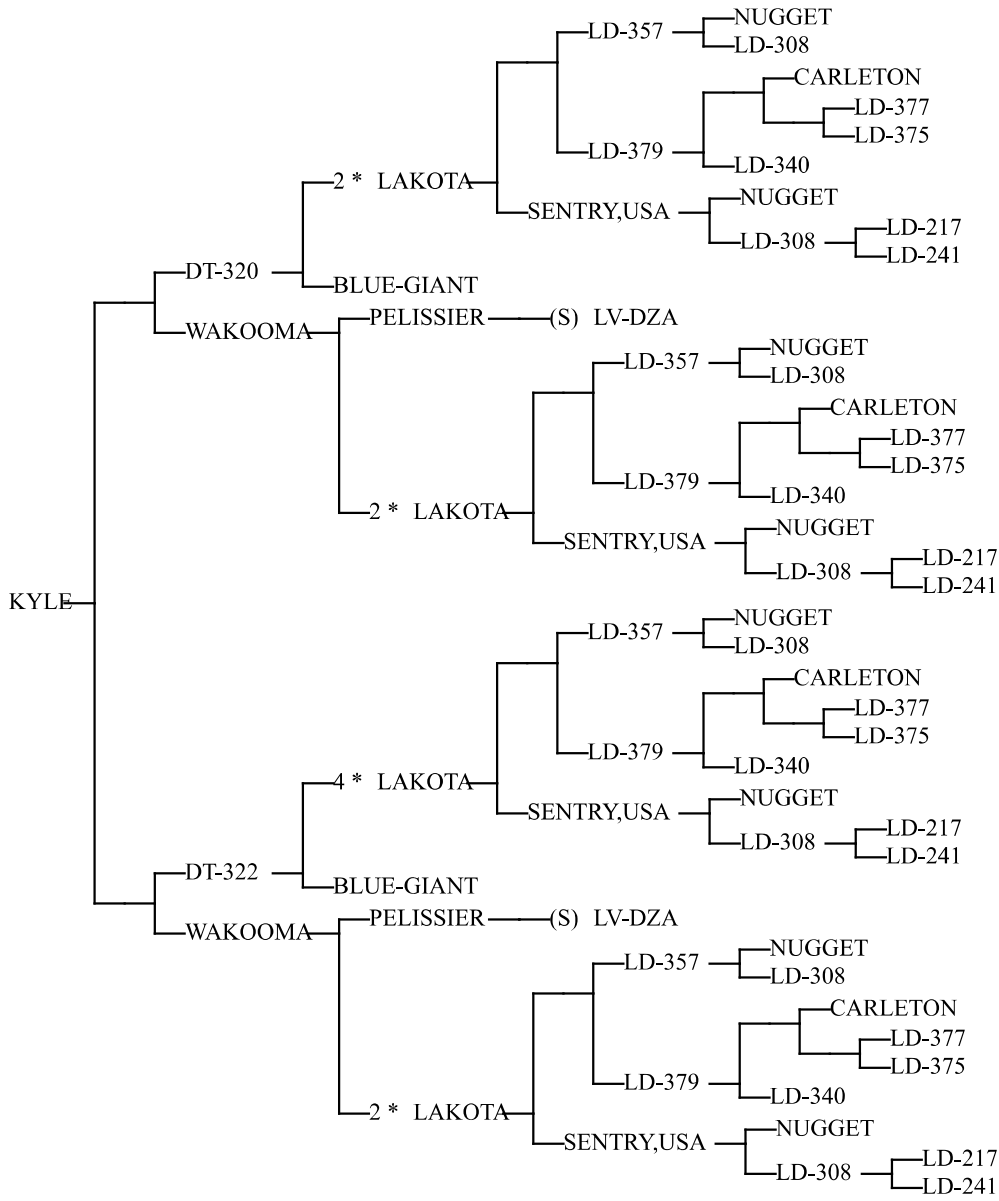


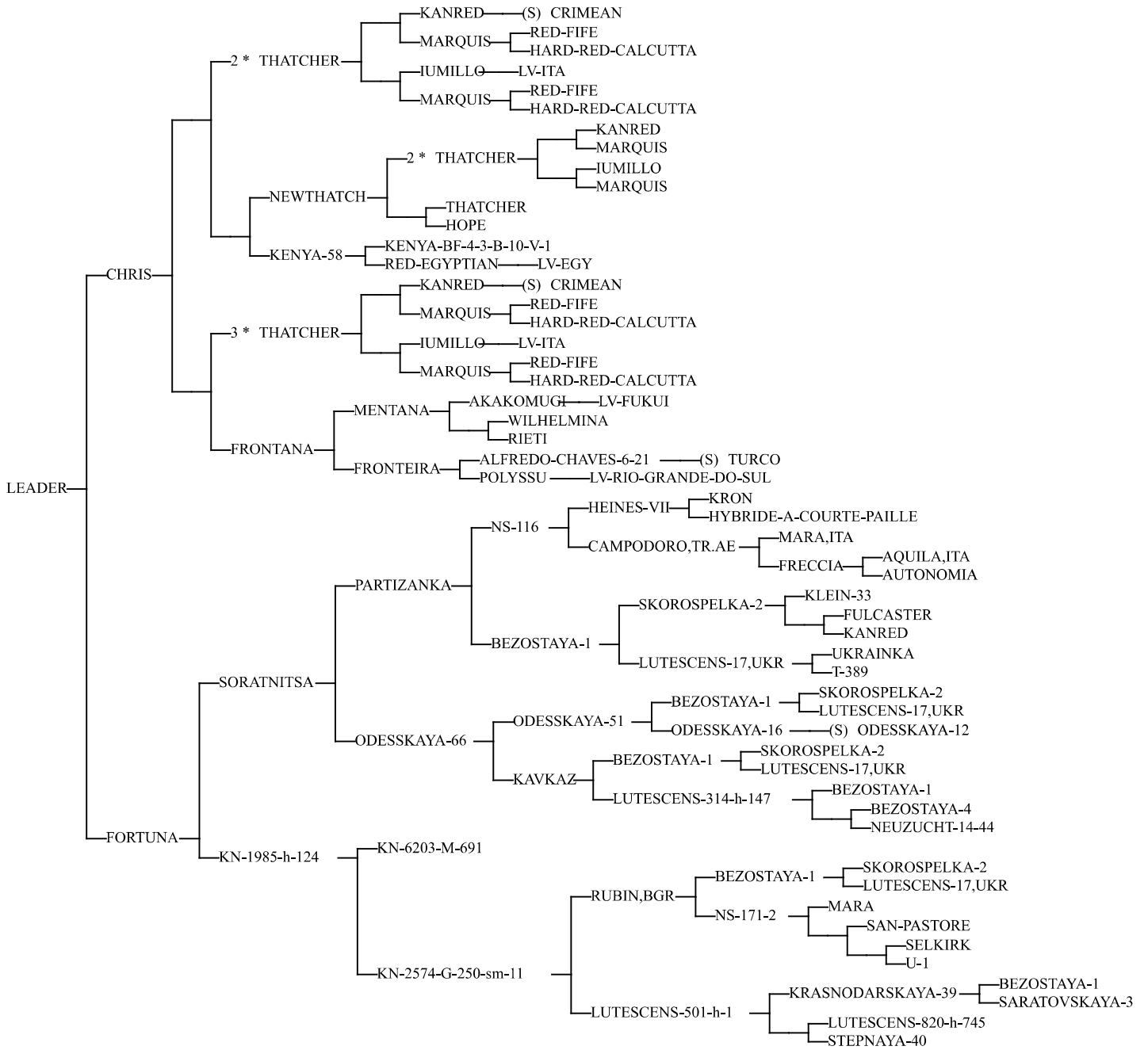


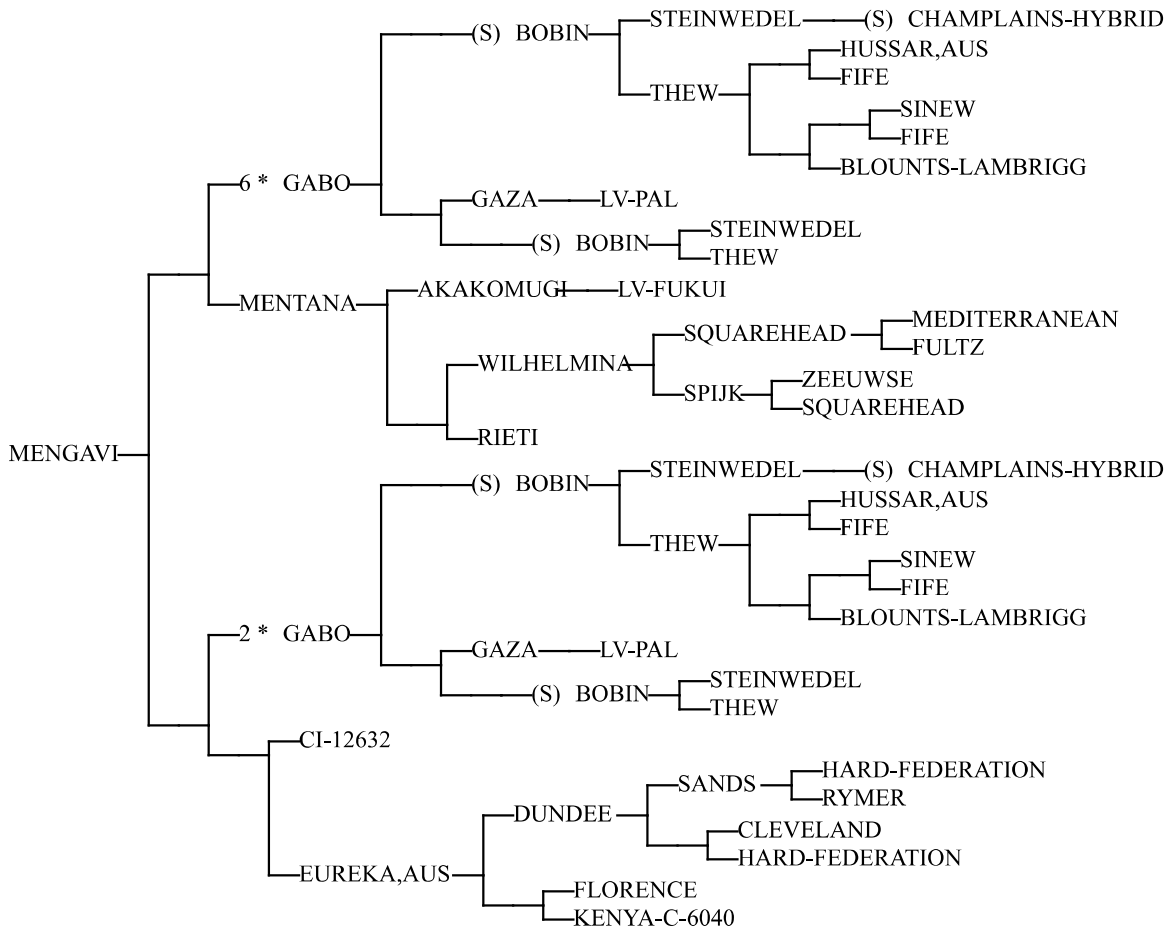


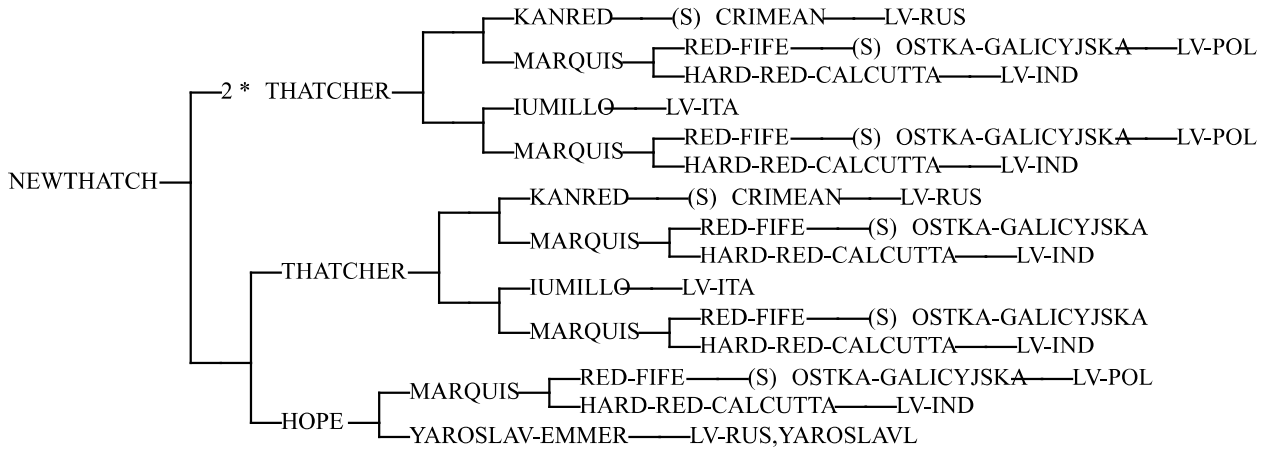


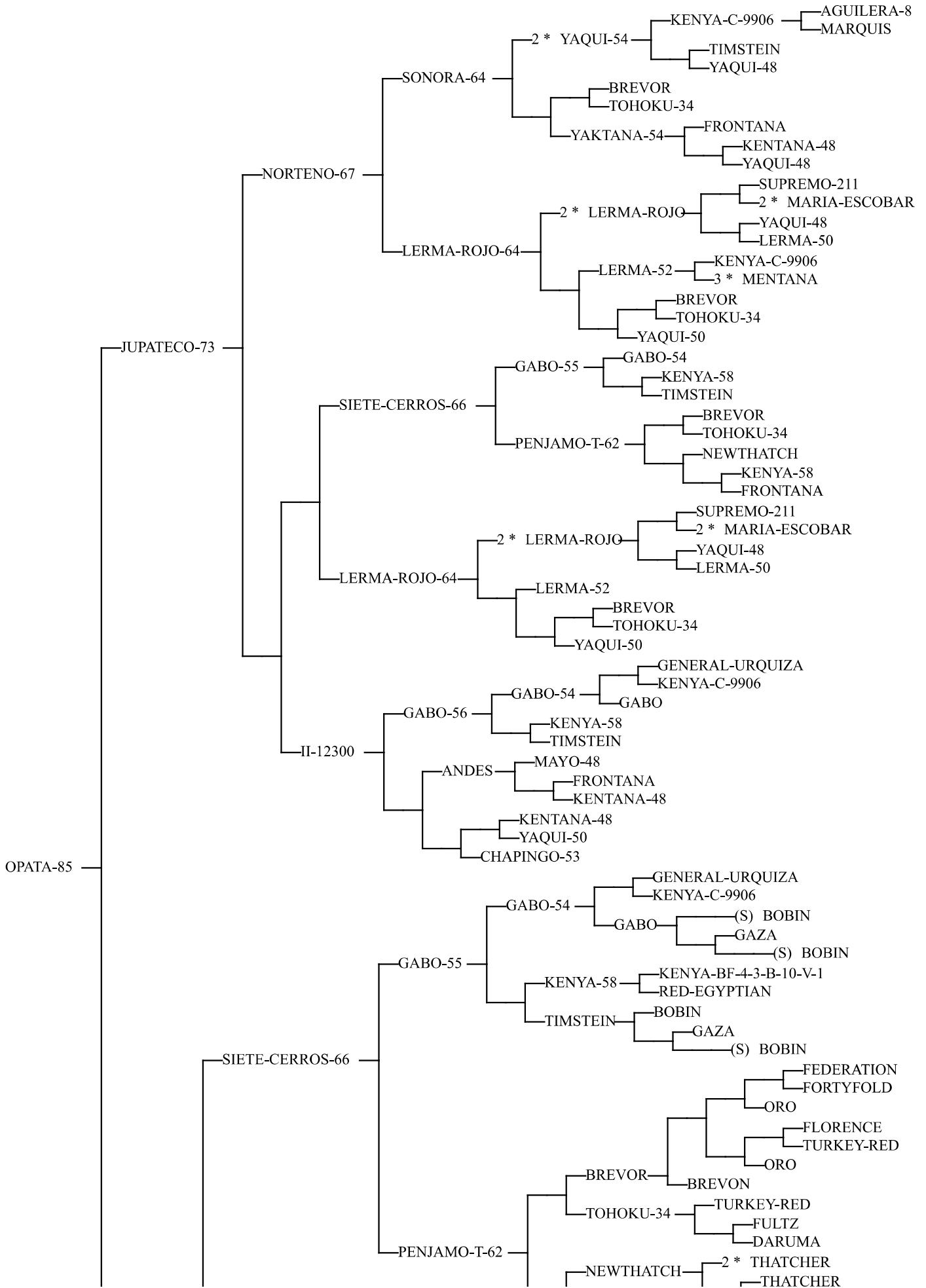


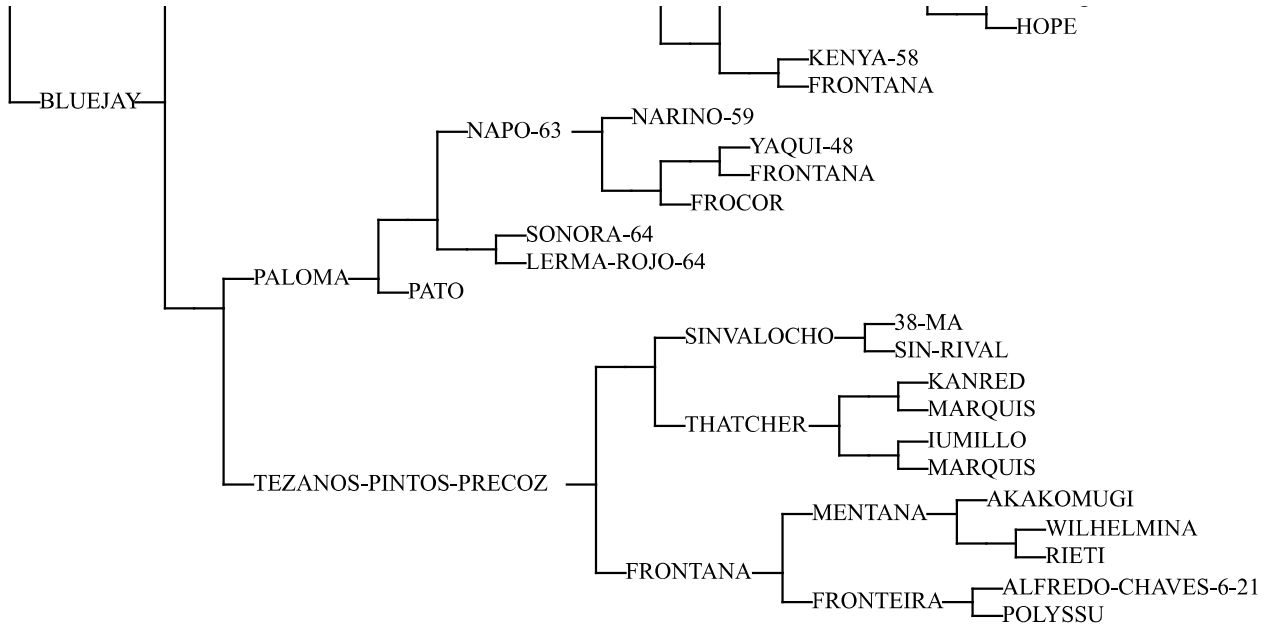






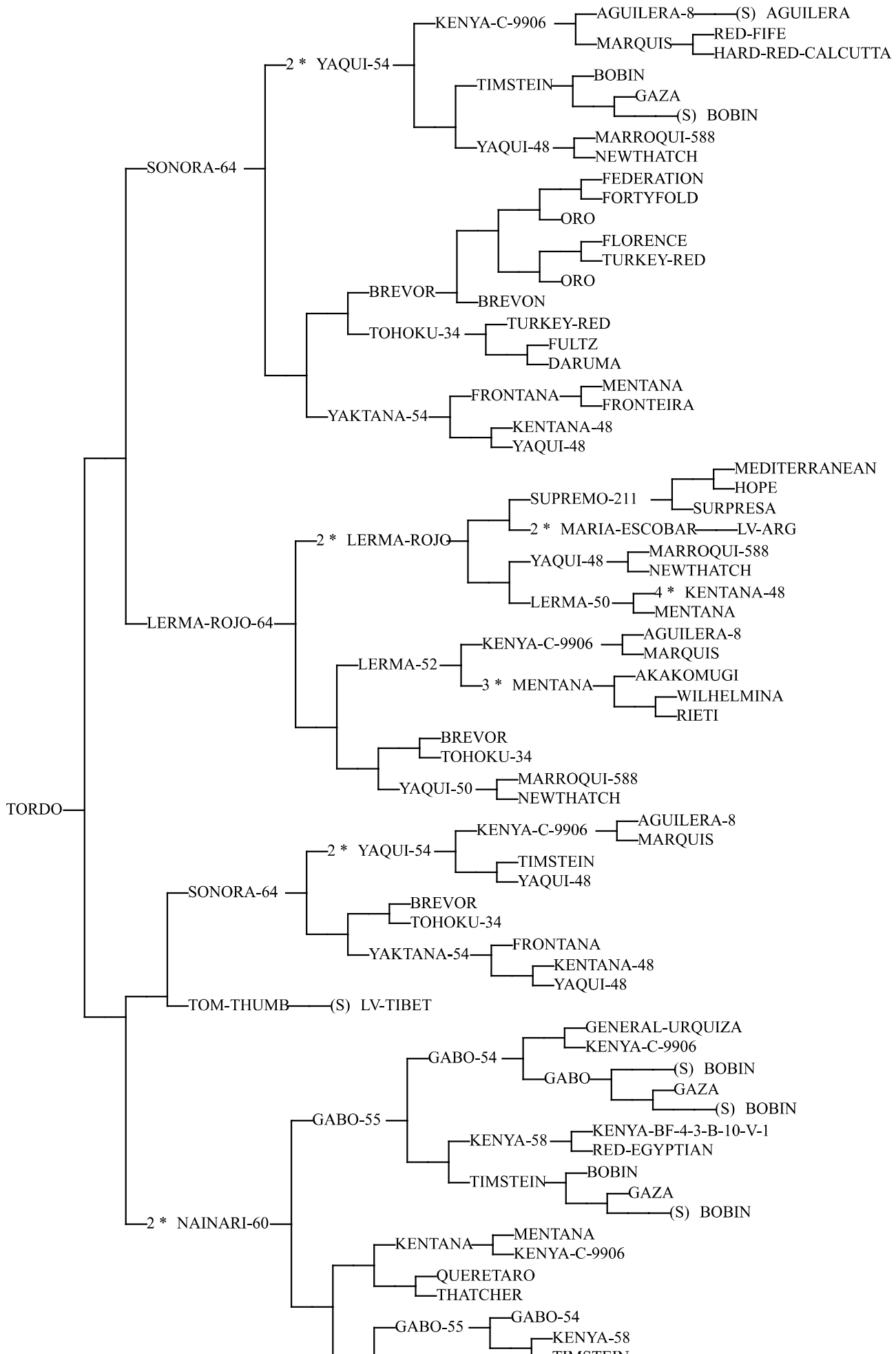




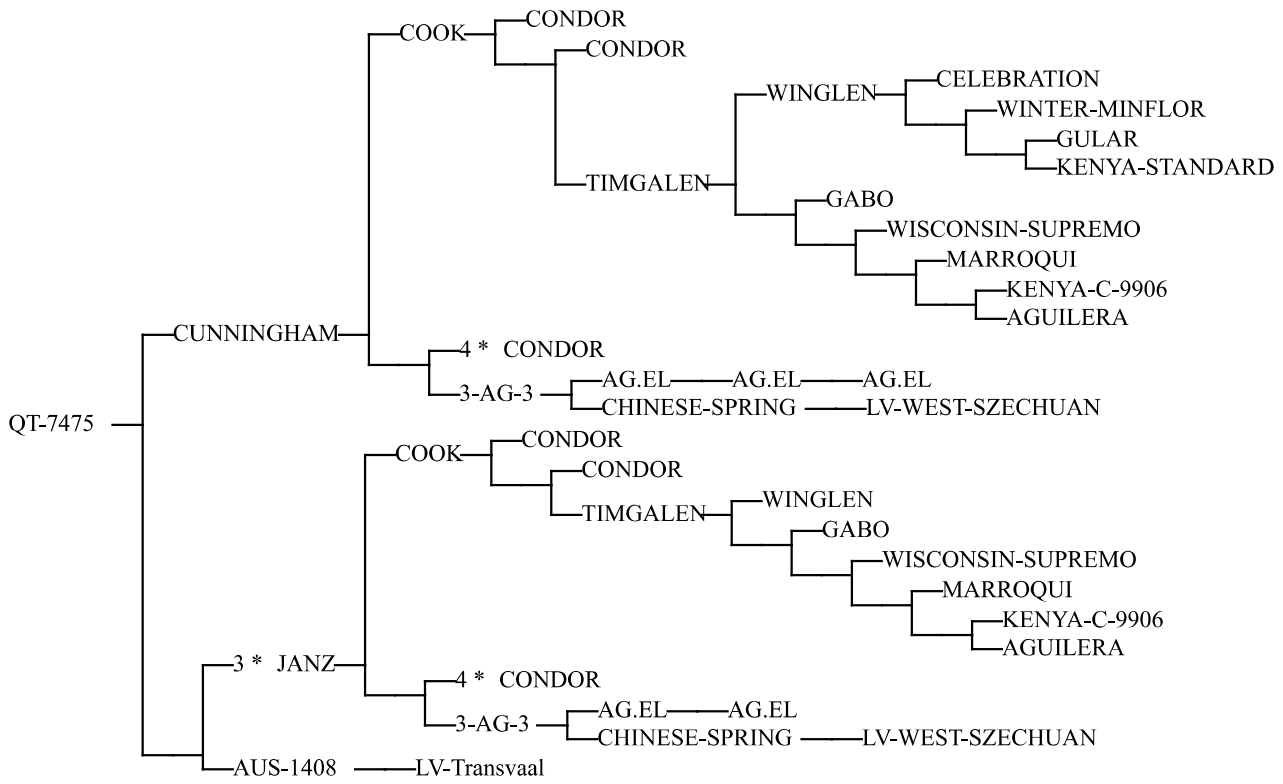


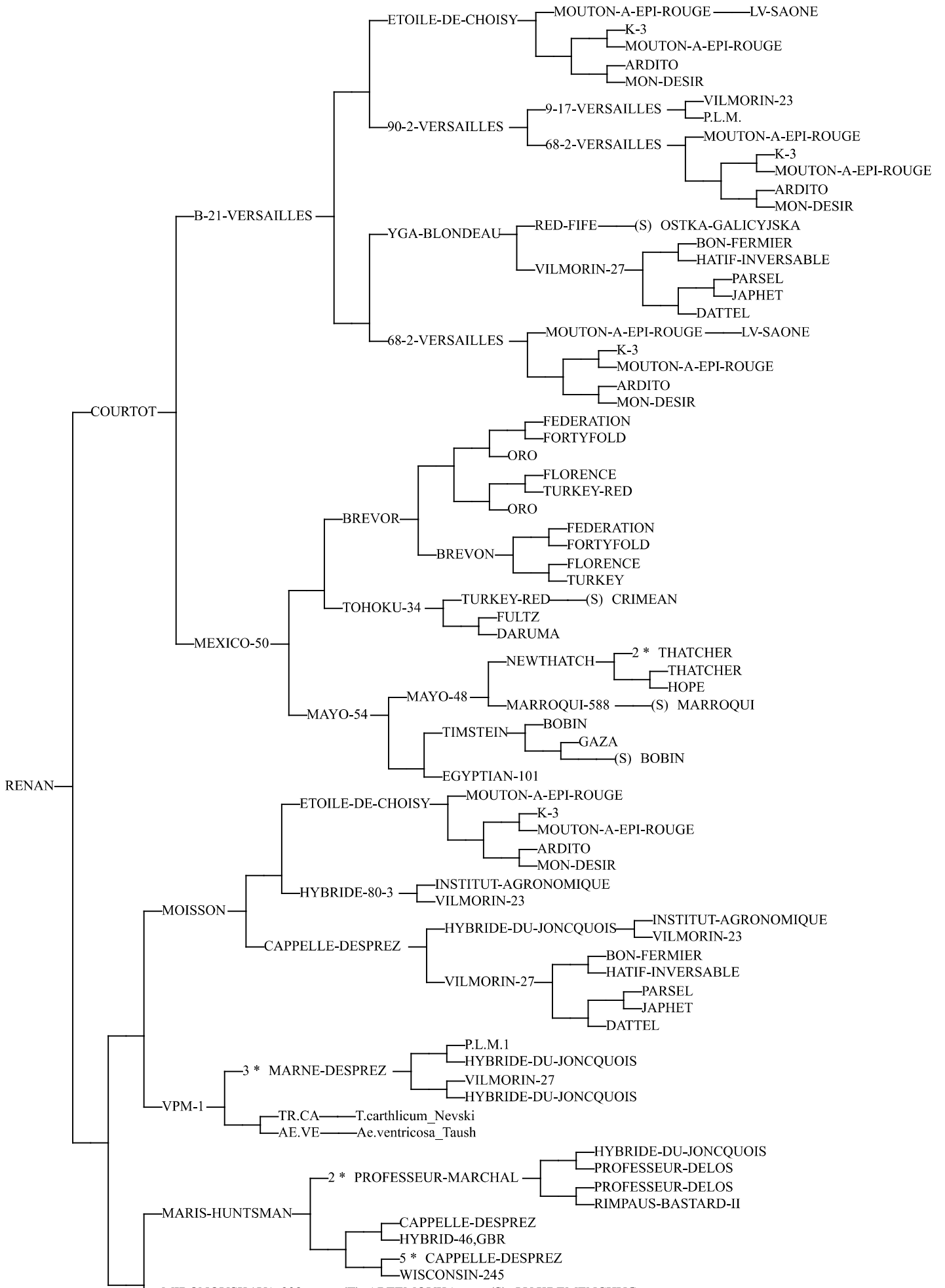
OS21-5:
Tordo/Zenkojikomugi
or
Tordo/Zenkoji

Osanai et al. 2015

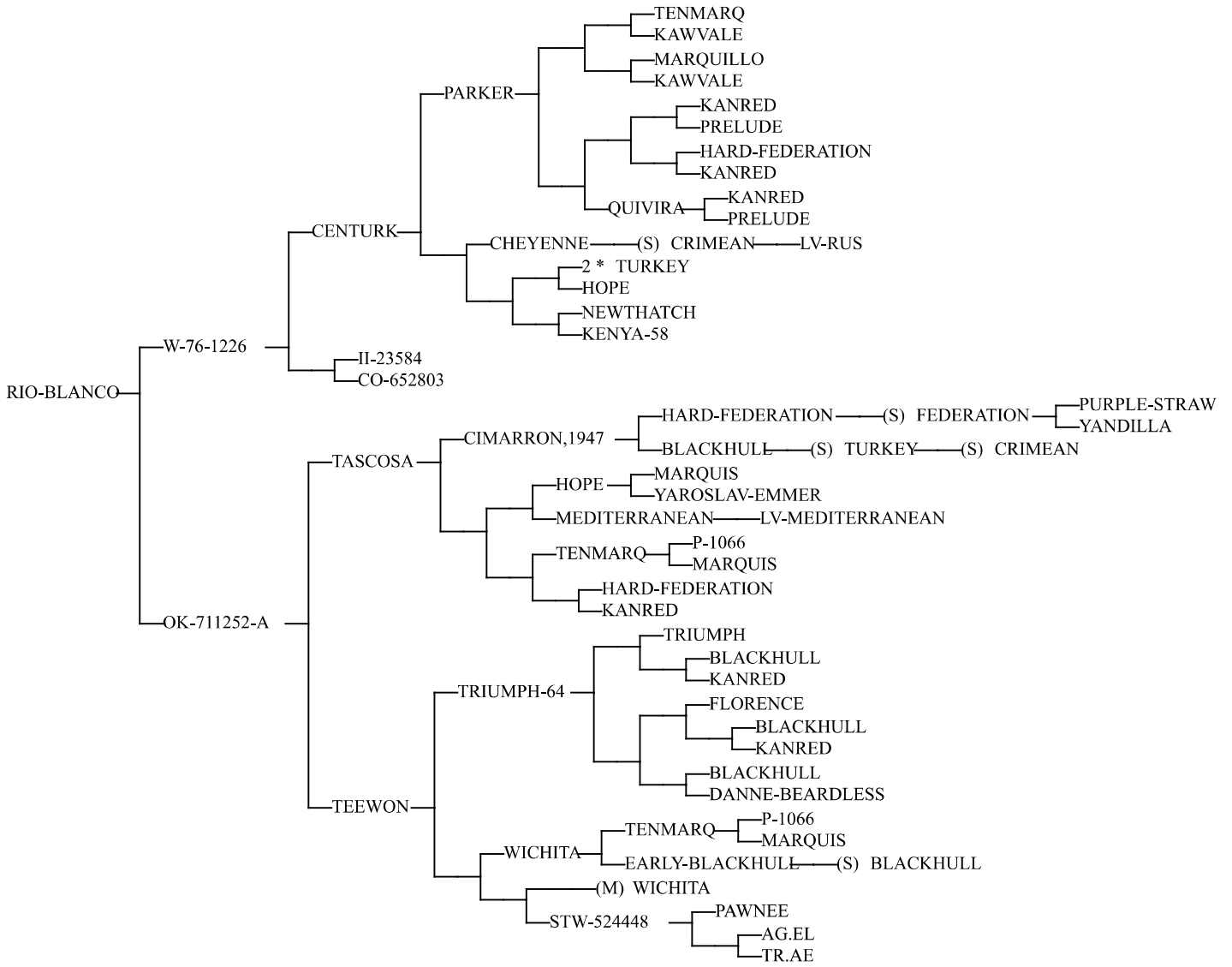


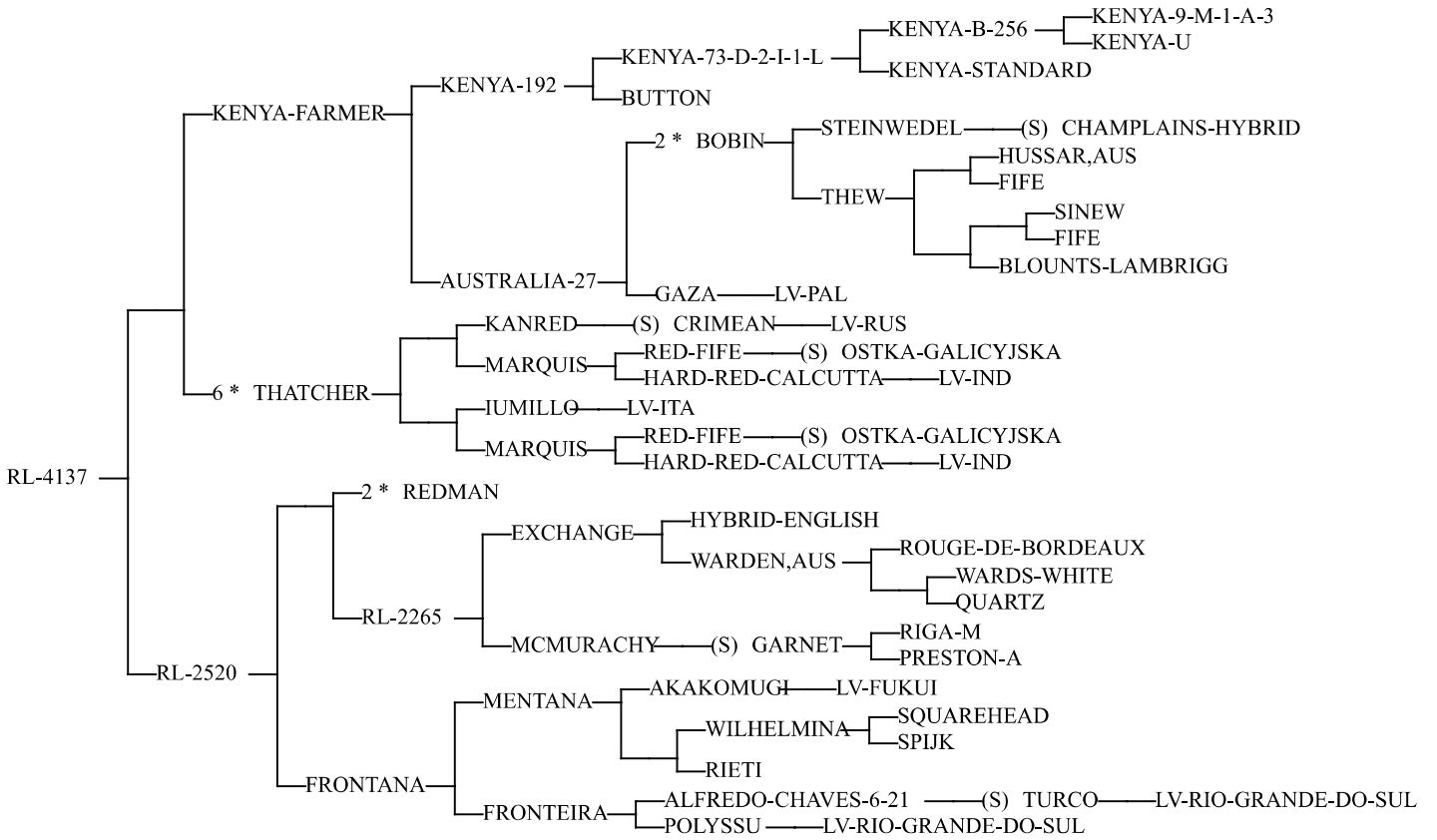


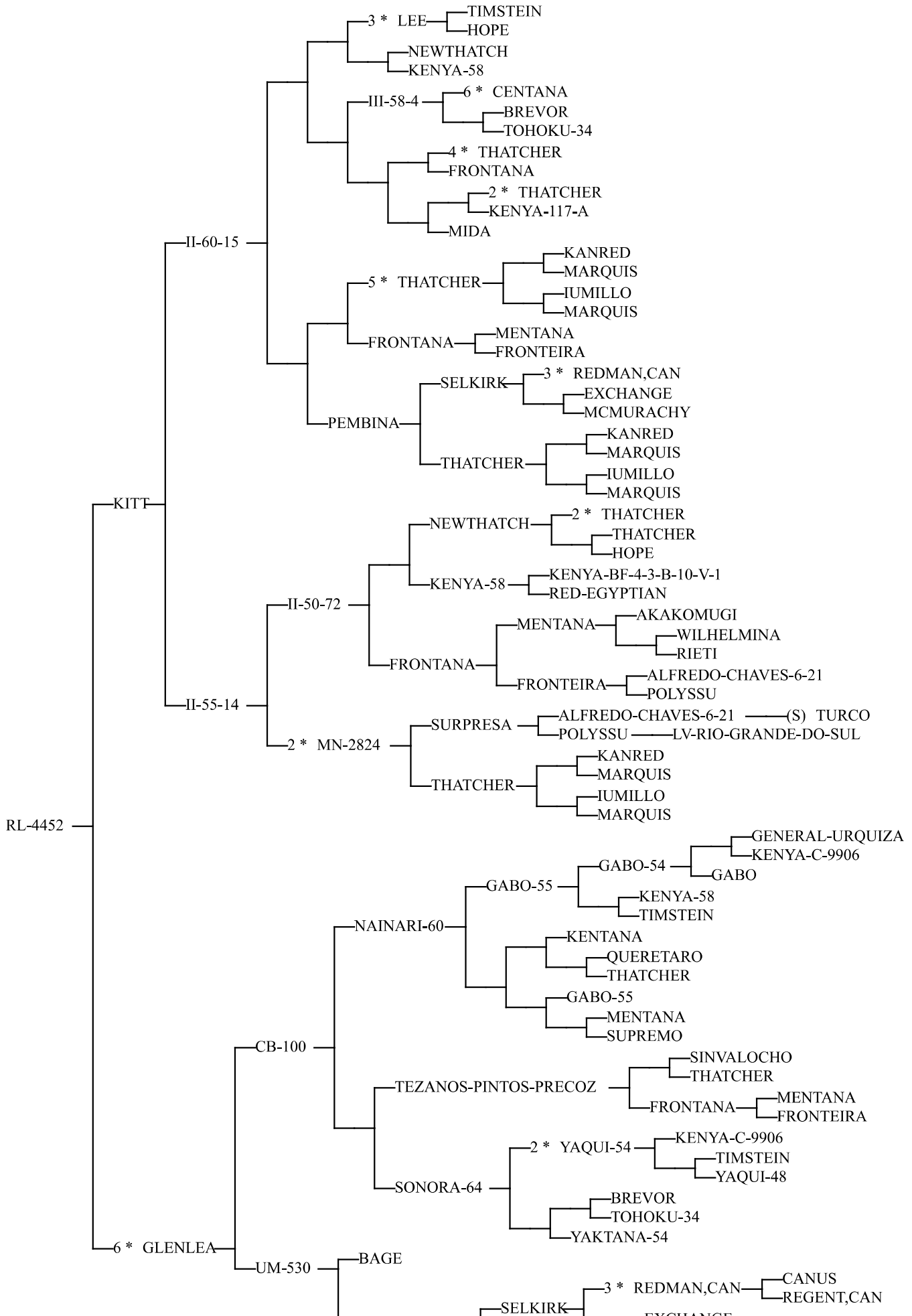


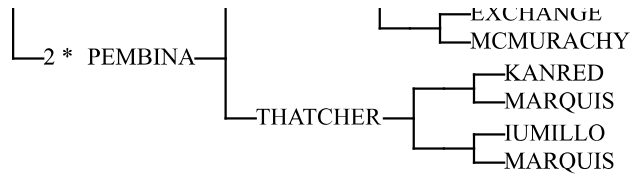


└─MIRONOVSKAYA-808 ──(T) ARTEMOVKA──(S) LV-KREMENCHUG

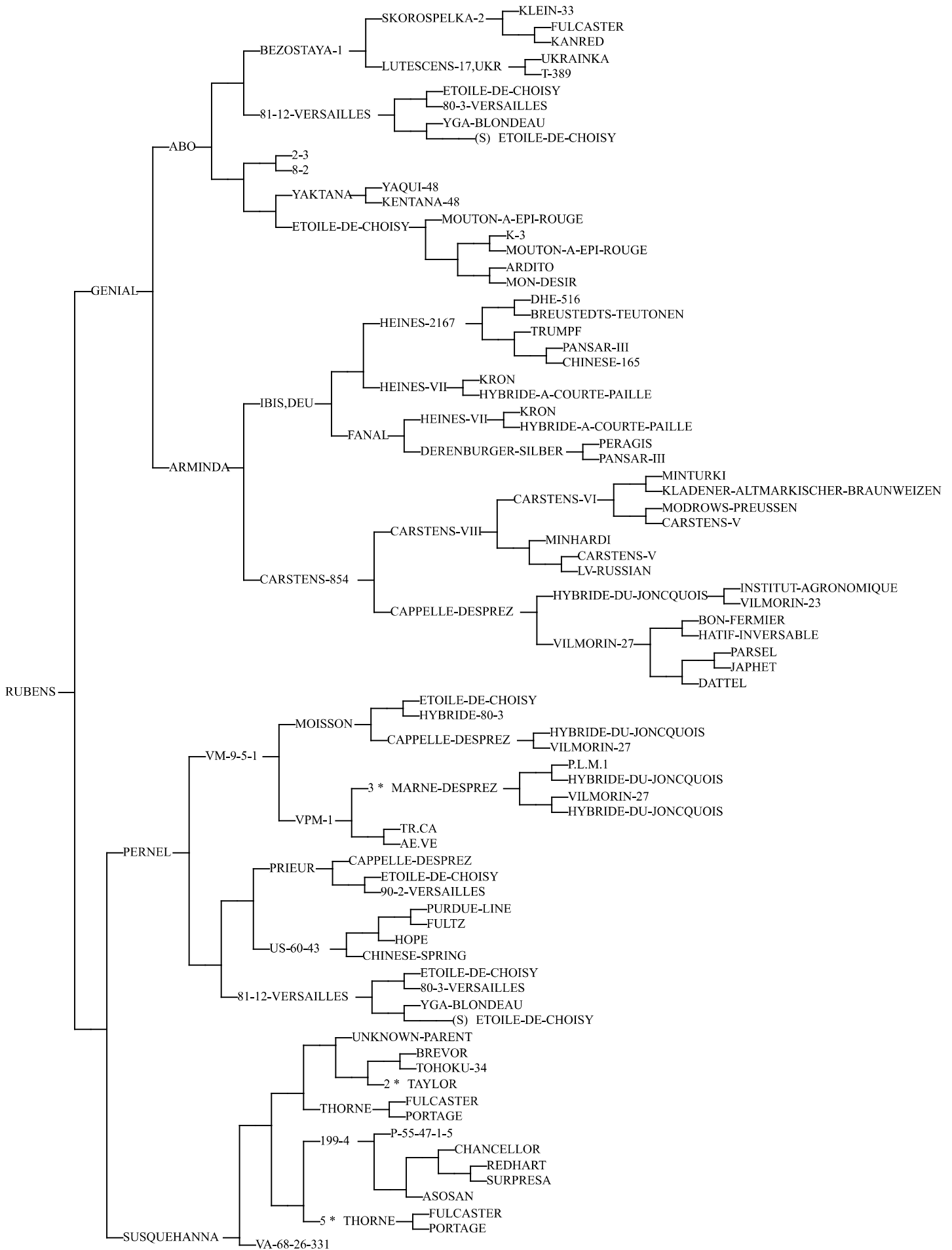


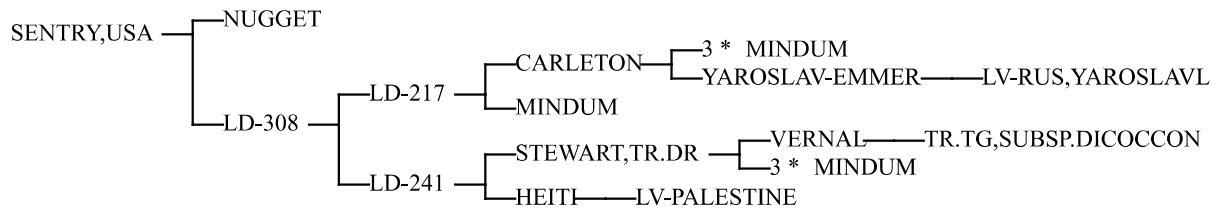


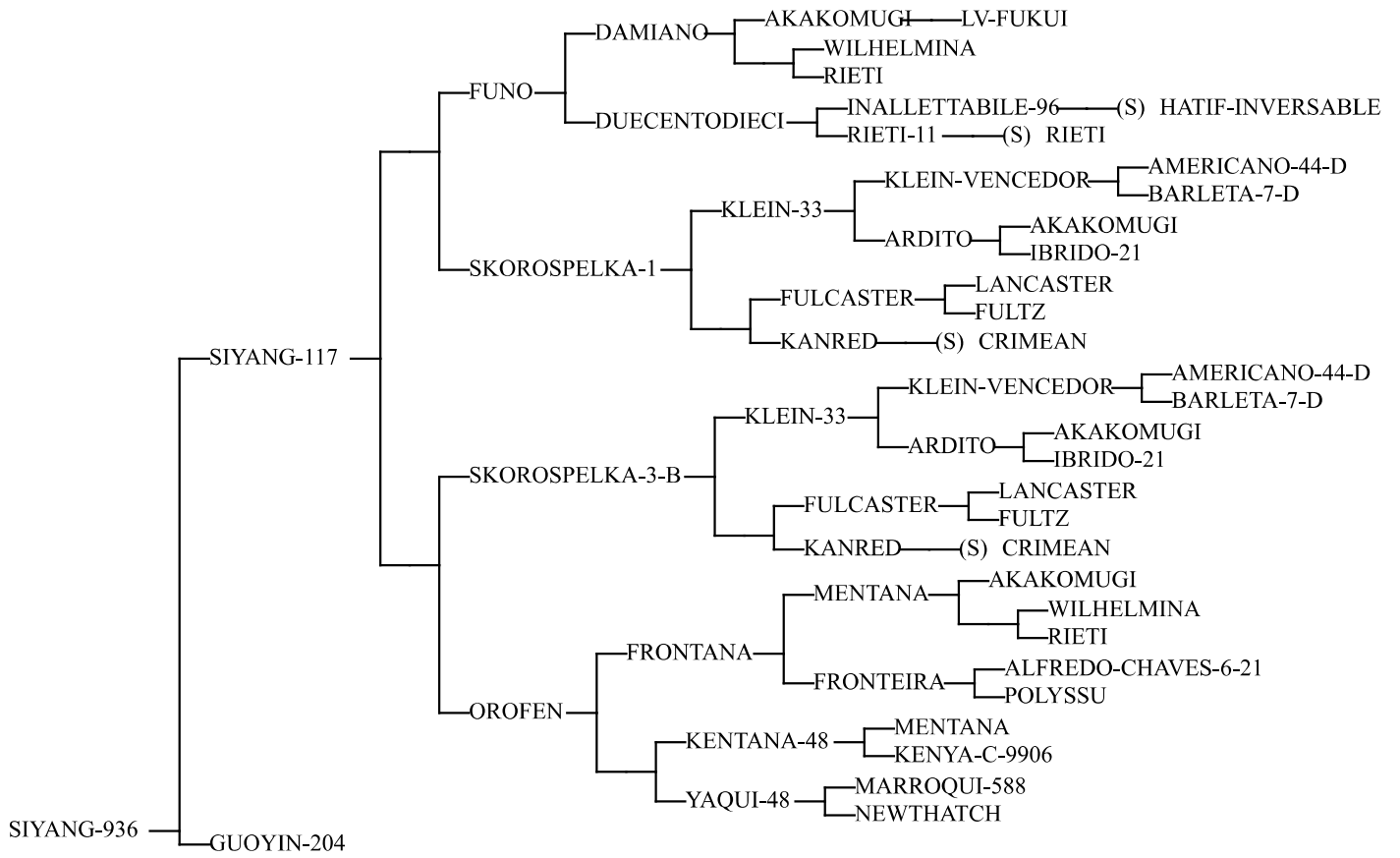


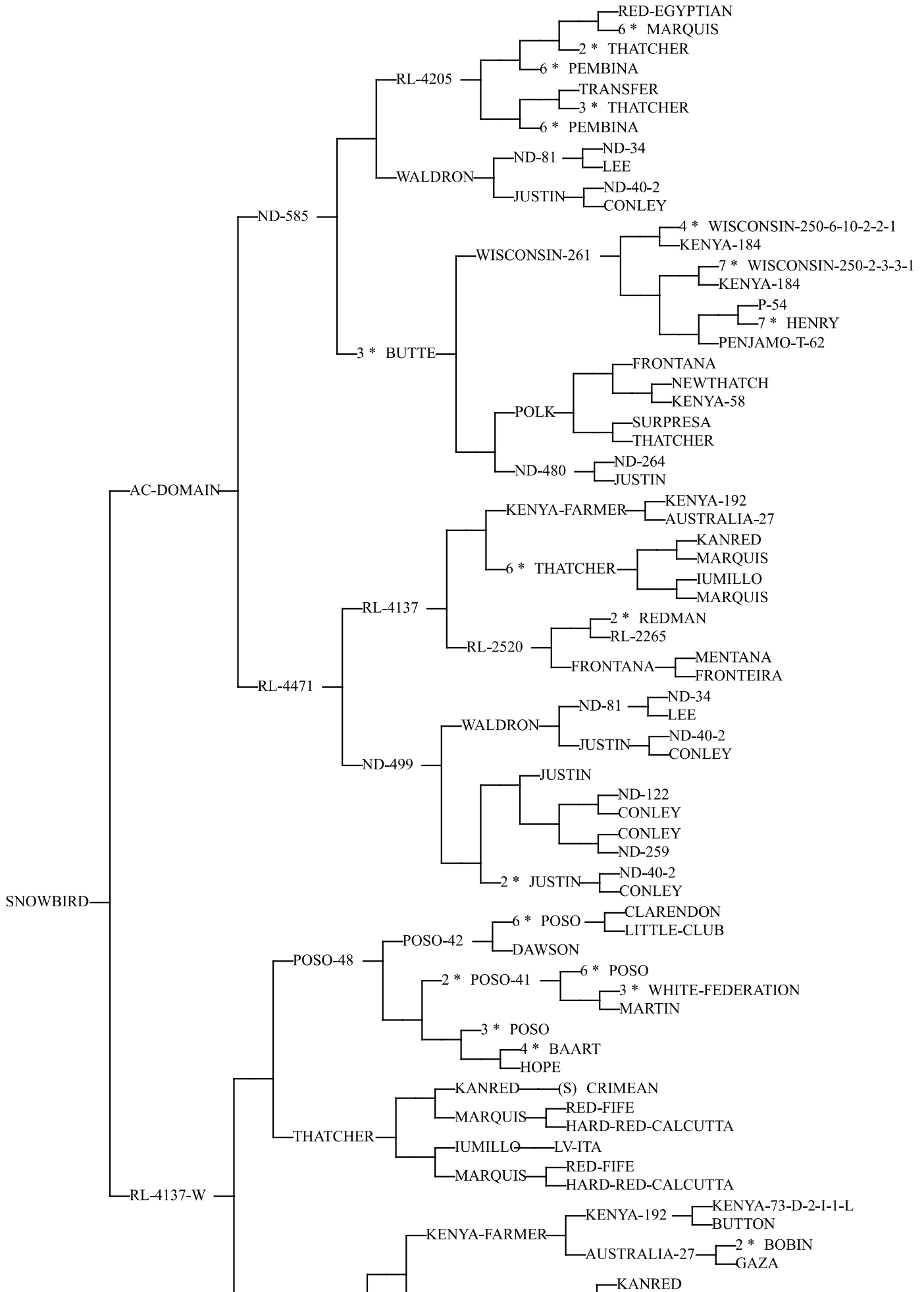


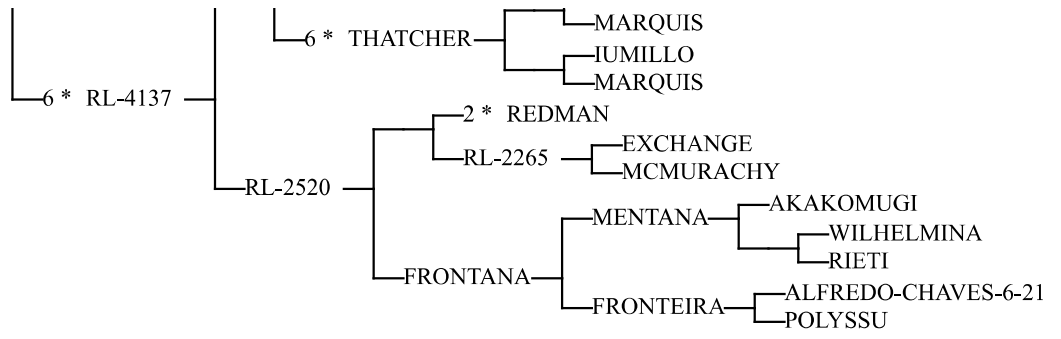


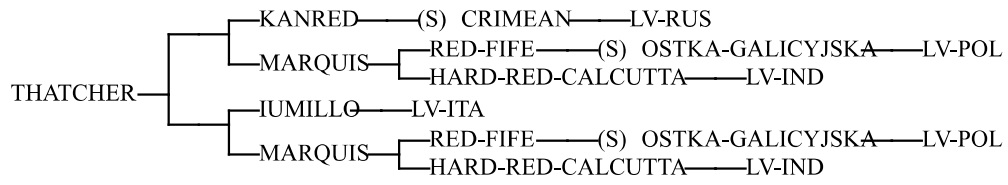


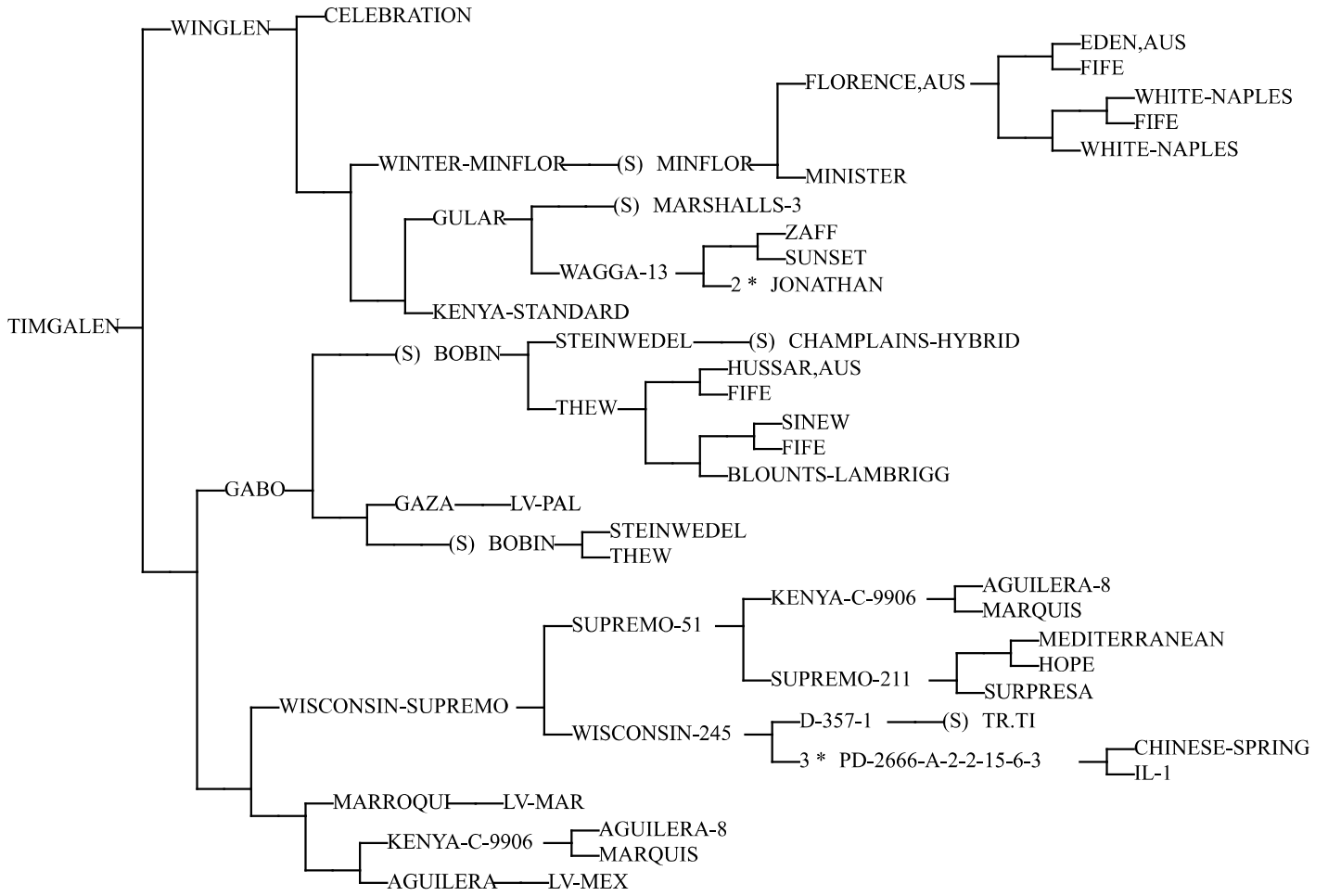












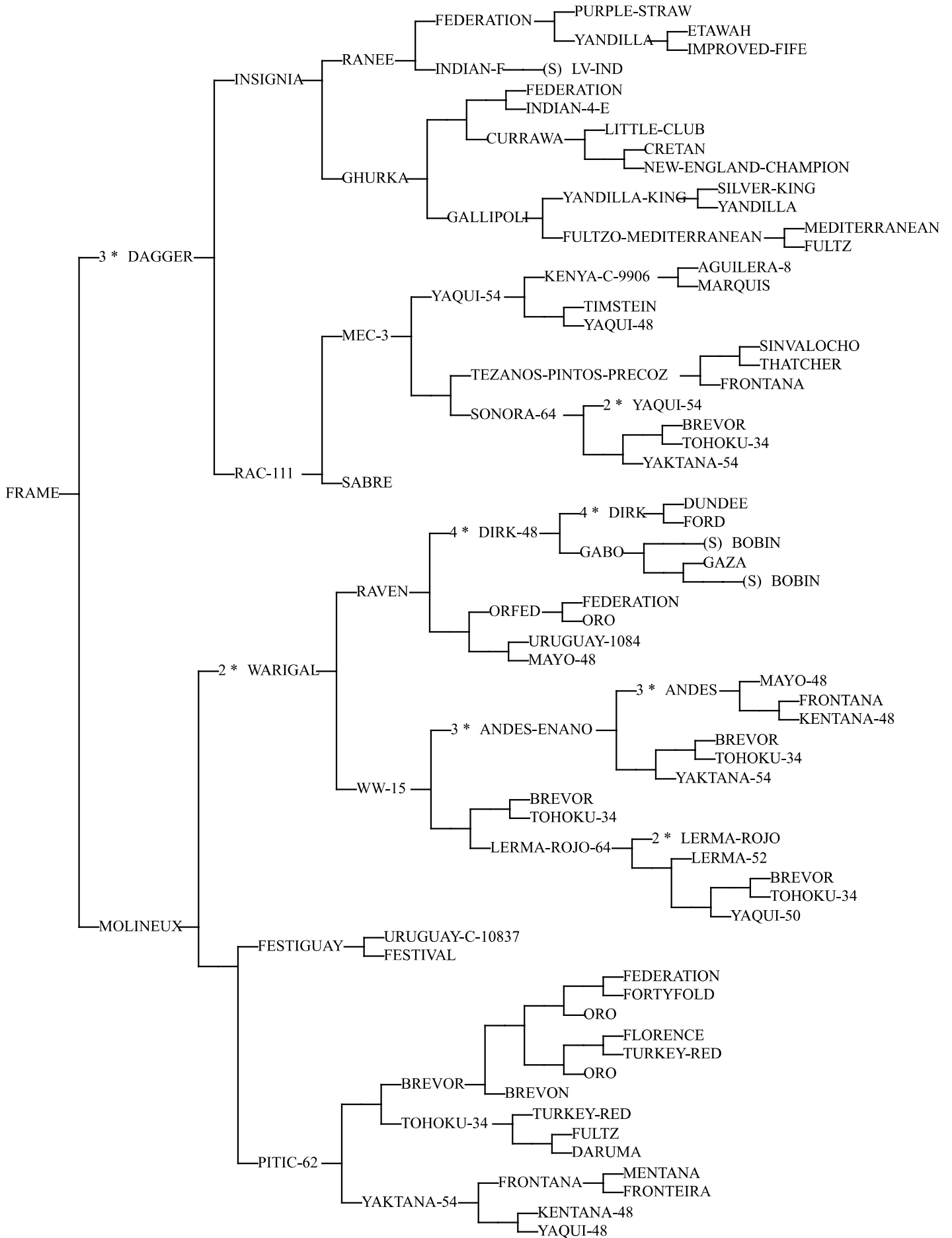
YANDA-1817 —(S) PINGYAO-XIAOBAIMAI—LV-SHANXI

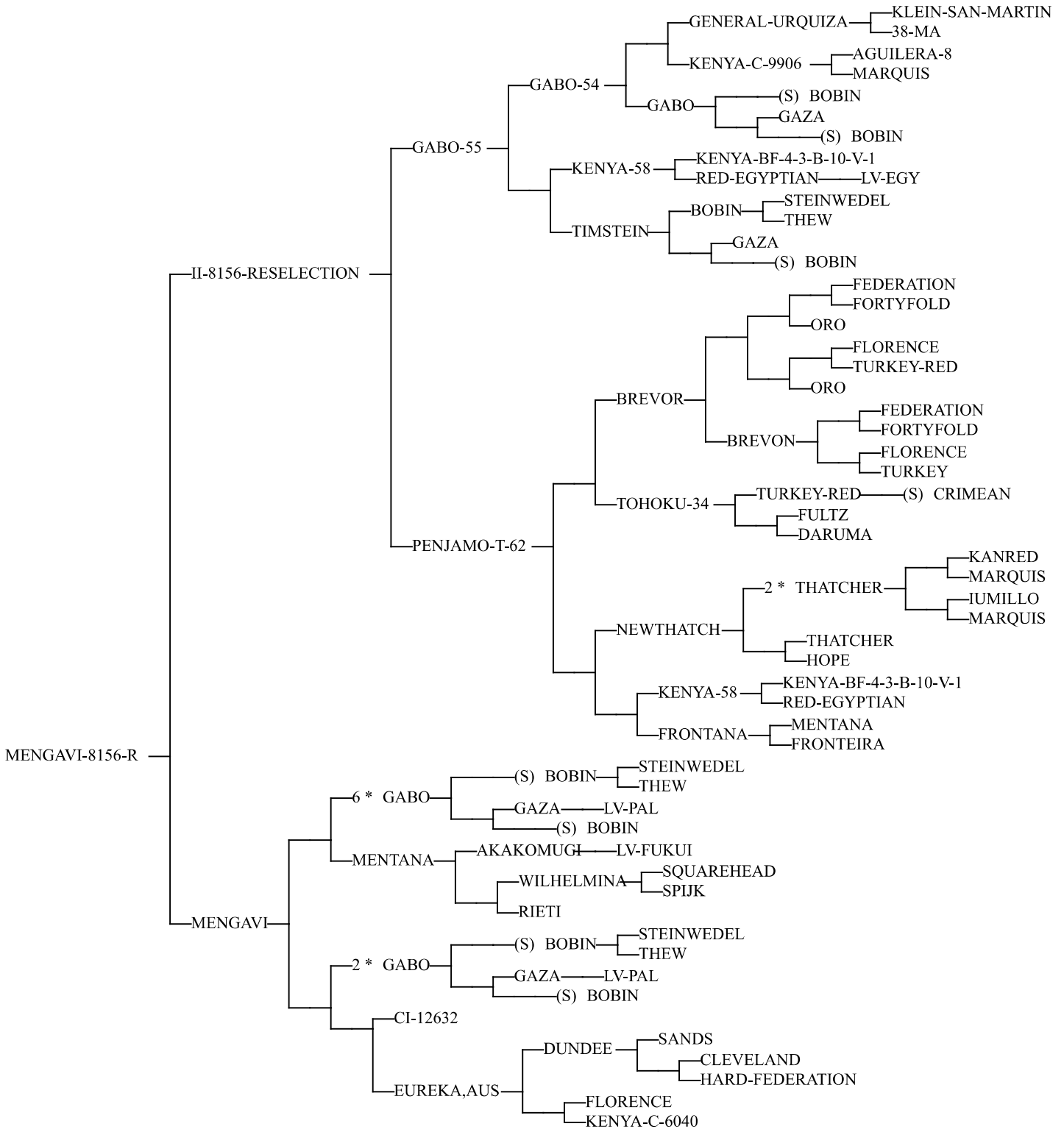
YANGXIAOMAI—LV-CHANG-AN

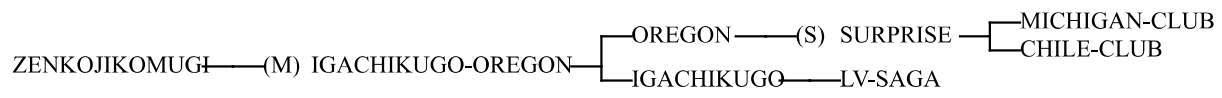
Yitpi:

Pedigree: (Chamlein* 8156)* (Mengavi*Site Corros) (Chamlein*8156)*Hron)*
(Mengavi*Siete Cerros)* Frame.

Garlinge, J. (2005).







ZHONGYOU-9507 —(S) ZHONGZUO-8131-1