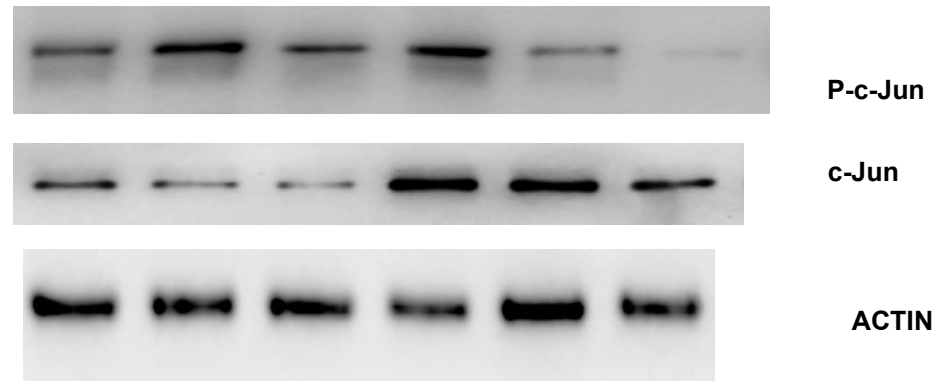


All membranes were cut in order to incubate at the same time different antibodies

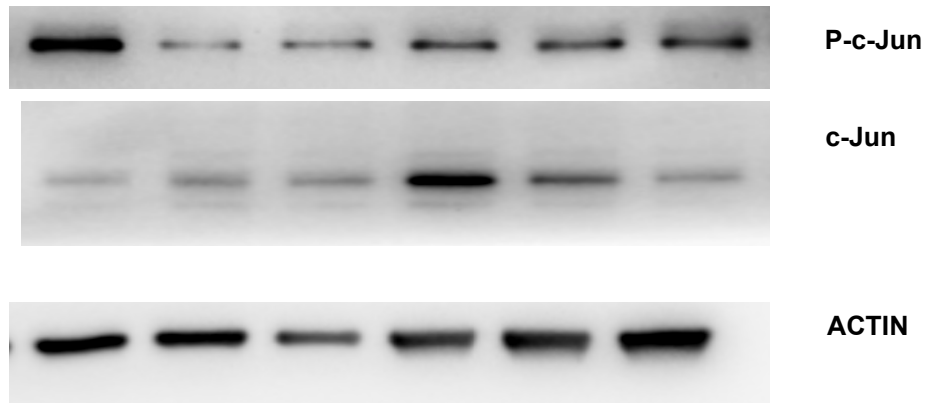
FIGURE 1

d Whole homogenates

Cortex



Hippocampus



Cerebellum

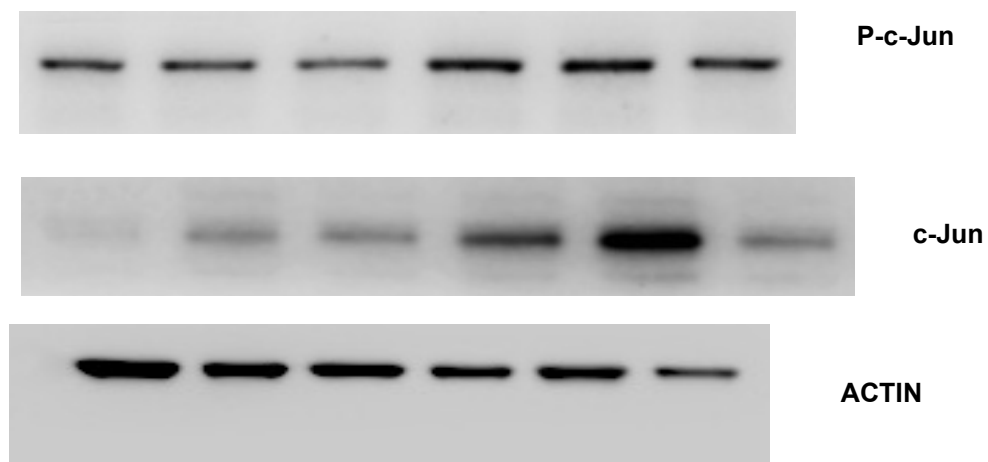
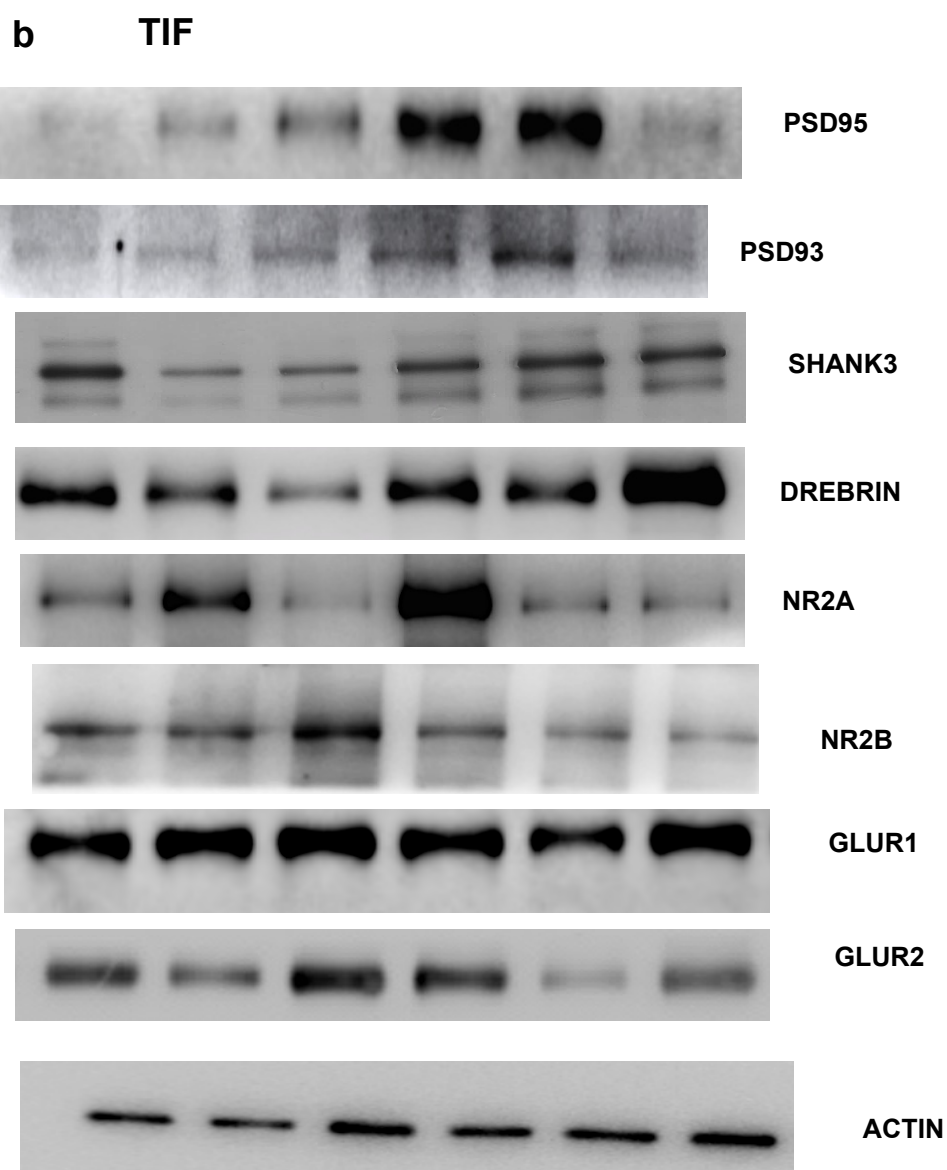


FIGURE 2

All membranes were cut in order to incubate at the same time different antibodies



a

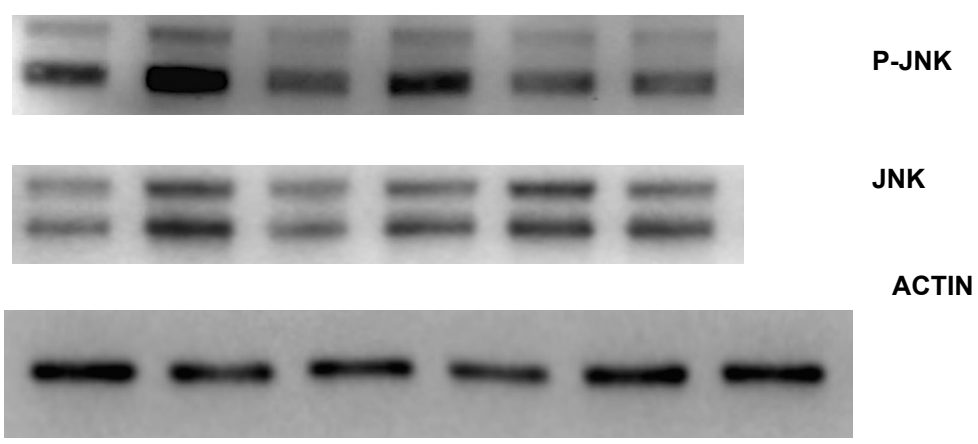
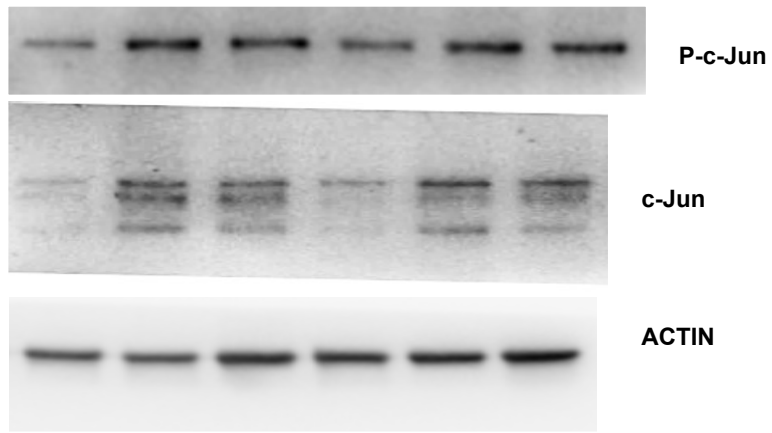
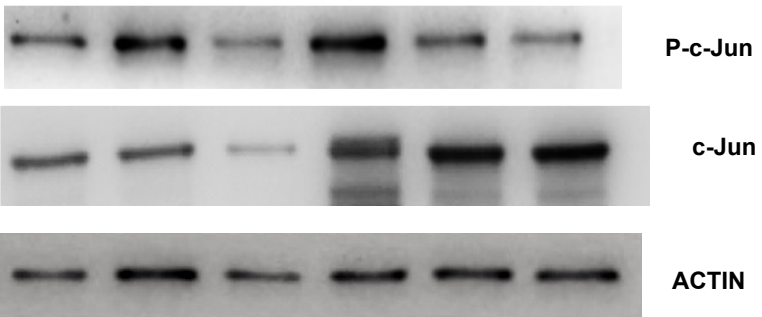
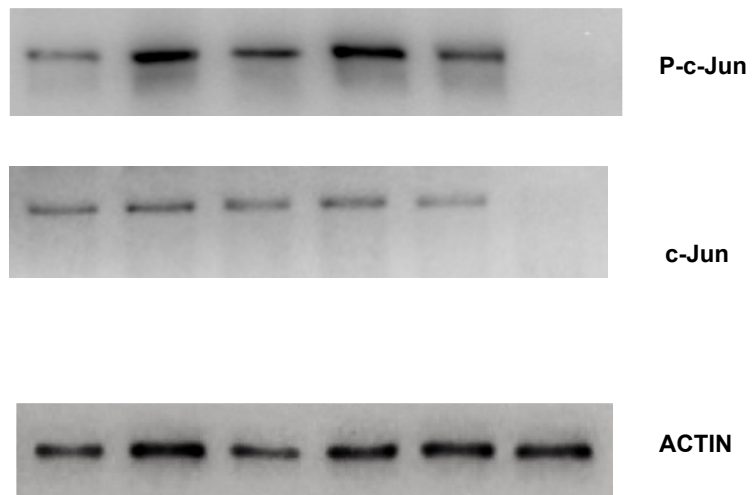
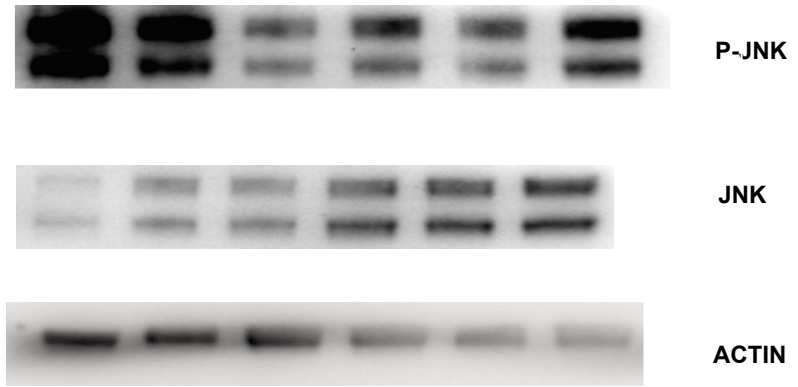
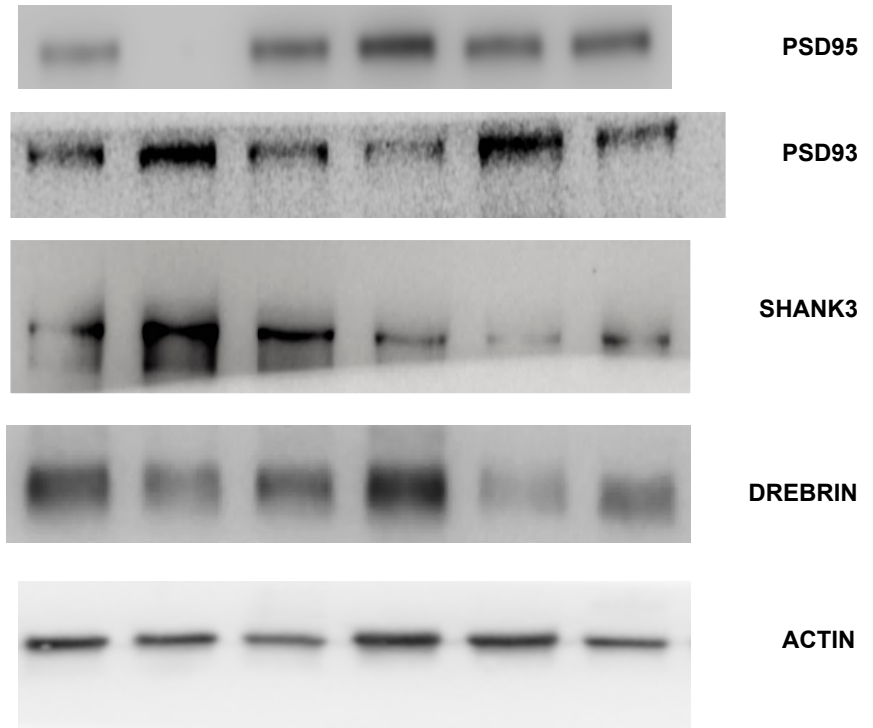


FIGURE 3

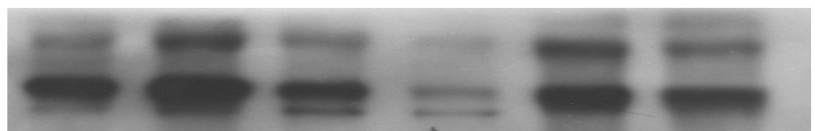
All membranes were cut in order to incubate at the same time different antibodies

D**Cortex****Hippocampus****Cerebellum****e****f**

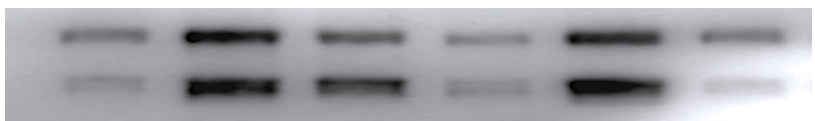
All membranes were cut in order to incubate at the same time different antibodies

FIGURE 4

b



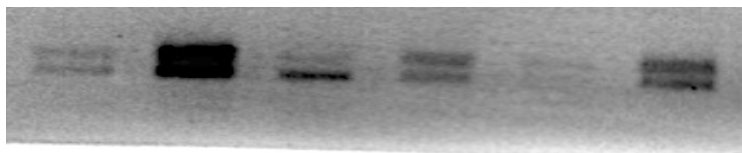
P-JNK



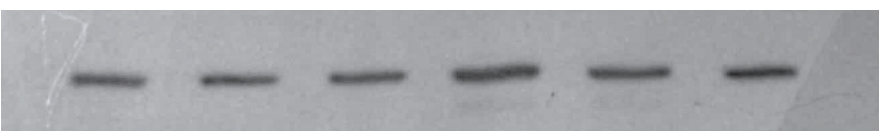
JNK



P-c-Jun



c-Jun



ACTIN

All membranes were cut in order to incubate at the same time different antibodies

FIGURE 5