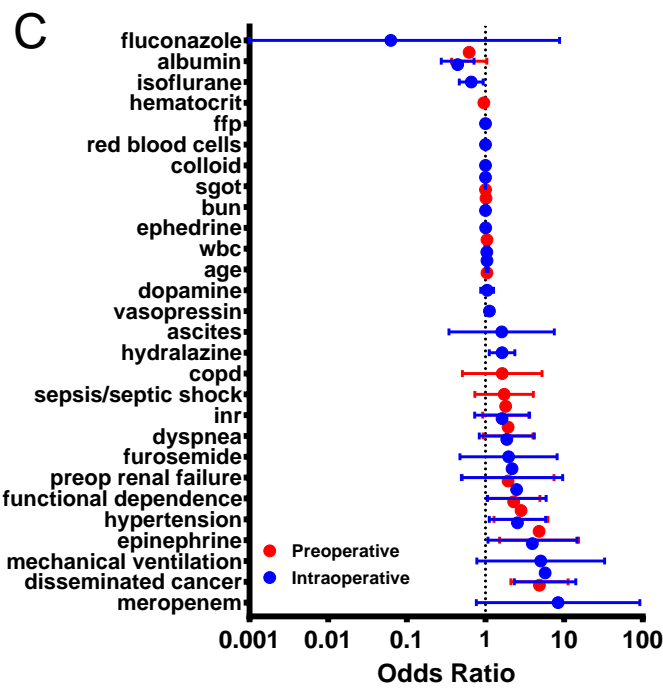
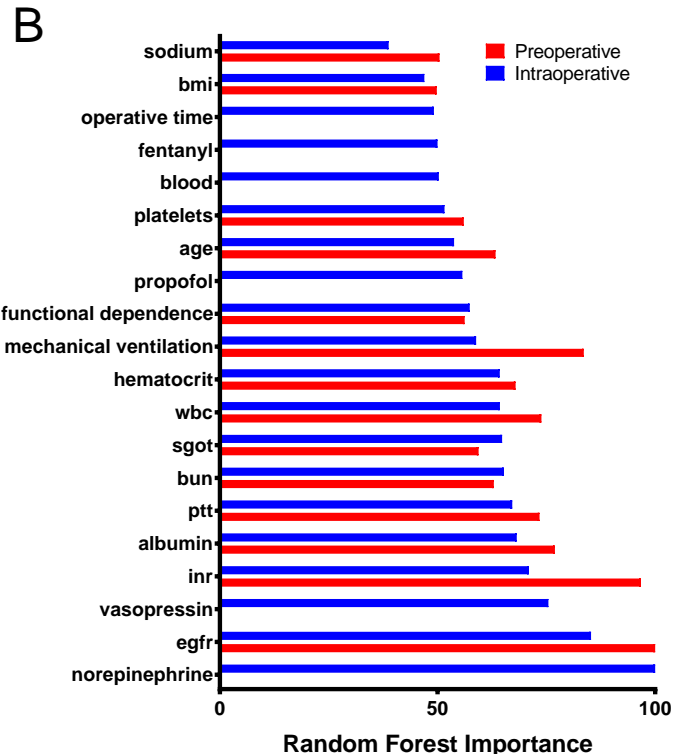
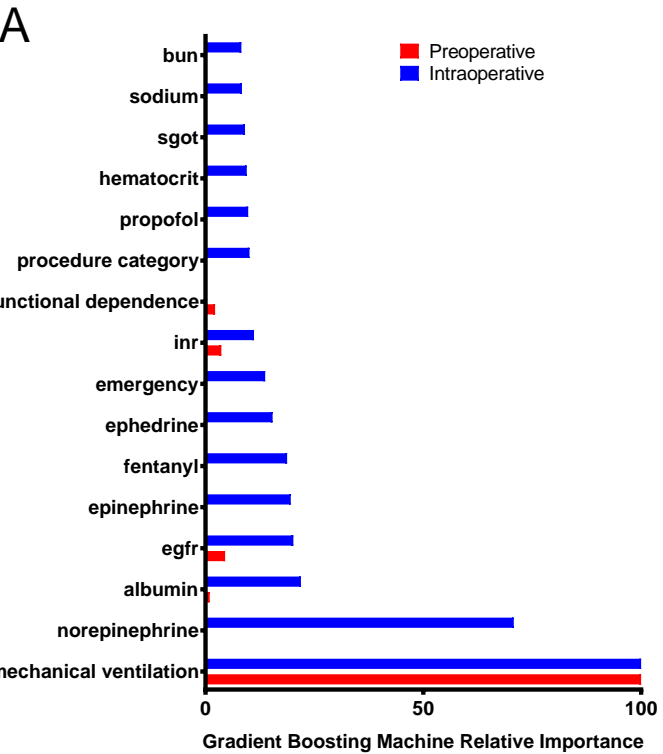


# Supplemental Figure 2



**Supplemental Figure 2.** Variable importance metrics for gradient boosting machine (A; relative importance), random forest (B; Gini impurity) and logistic regression (C; odds ratios). Separate models were fit using preoperative data (red) and preoperative + intraoperative data (blue). For logistic regression, odds ratios were obtained from a separate logistic regression model using variables selected from elastic net regression. alk phos, alkaline phosphatase; bmi, body mass index; bun, blood urea nitrogen; copd, chronic obstructive pulmonary disease; ebl, estimated blood loss; egfr, estimated glomerular filtration rate; ffp, fresh frozen plasma; inr, international normalized ratio; lr, lactated ringer's; preop, preoperative; ptt, partial thromboplastin time; sgot, serum glutamic-oxaloacetic transaminase; wbc, white blood cell count.