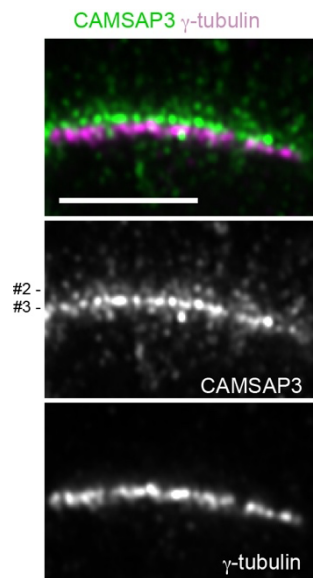


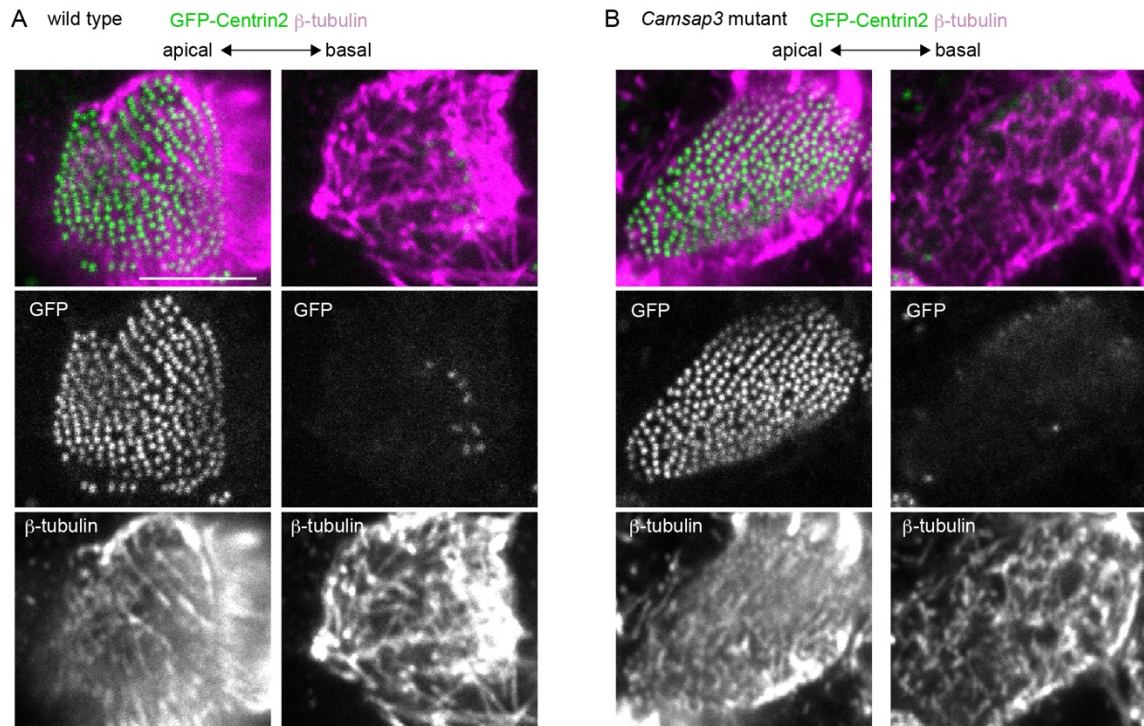
# **Supplementary Materials**

*Molecular Biology of the Cell*

Saito et al.



**Figure S1:** An alternative pattern of CAMSAP3 distribution. Longitudinal section of a multi-ciliated cell in wild-type trachea, which was co-immunostained for CAMSAP3 and  $\gamma$ -tubulin and recorded by Airyscan microscopy. Note that the #3 row, identified by its position next to  $\gamma$ -tubulin, shows the most intense IF signals in this particular specimen.



**Figure S2:** Microtubule distribution at the apical portions of a multiciliated cell.  $\beta$ -tubulin was immunostained using trachea isolated from a wild-type (A) or *Camsap3*<sup>dc/dc</sup> (B) mouse expressing GFP-Centrin2. The images at two horizontal levels, which are 0.12 (in A) and 0.10  $\mu$ m (in B) apart, are shown. Oral side is at the right. P180 mice were used. The same samples were used in Videos S5 and S6. Scale bars, 5  $\mu$ m.