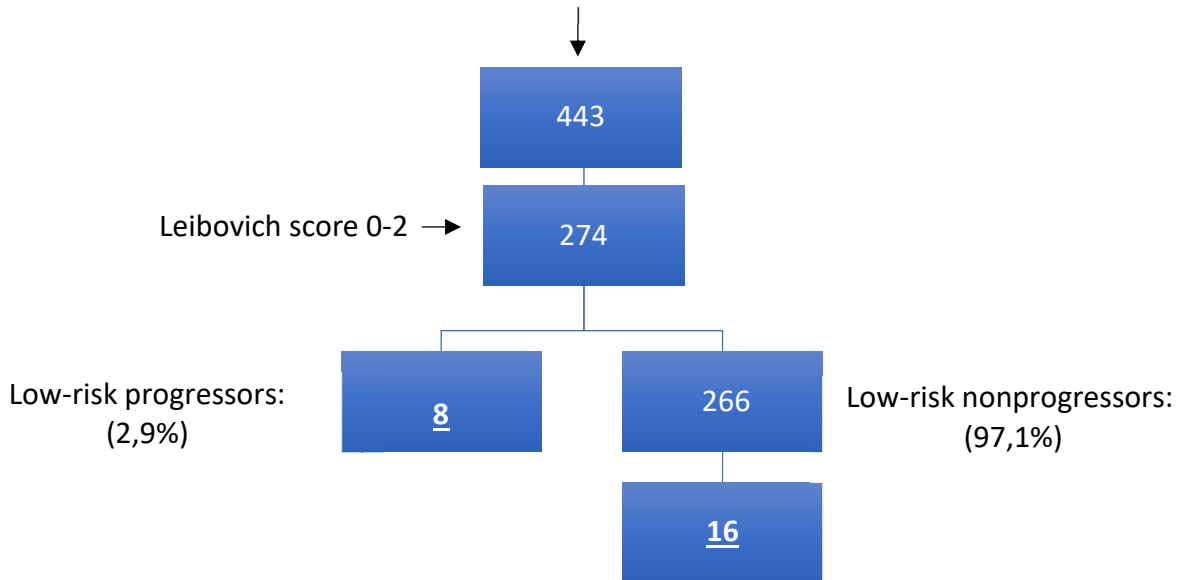


Additional file 1: Patient selection procedure

All ccRCC patients undergoing nephrectomy between 1997 and 2014



Additional file 1: Out of 443 patients operated for ccRCC between 1997 and 2014, 274 were classified as “low risk” (score 0-2, according to Leibovich 2003 classification). Eight of them (2.9%) developed metastases. Control patients (n=16) matched for age, primary tumor stage and size, Fuhrman grade and eGFR were selected from the 266 non-progressing “low risk” patients. A detailed analysis of the clinical-pathological characteristics of progressing and non-progressing control patients is reported in **Table 1** of the main text