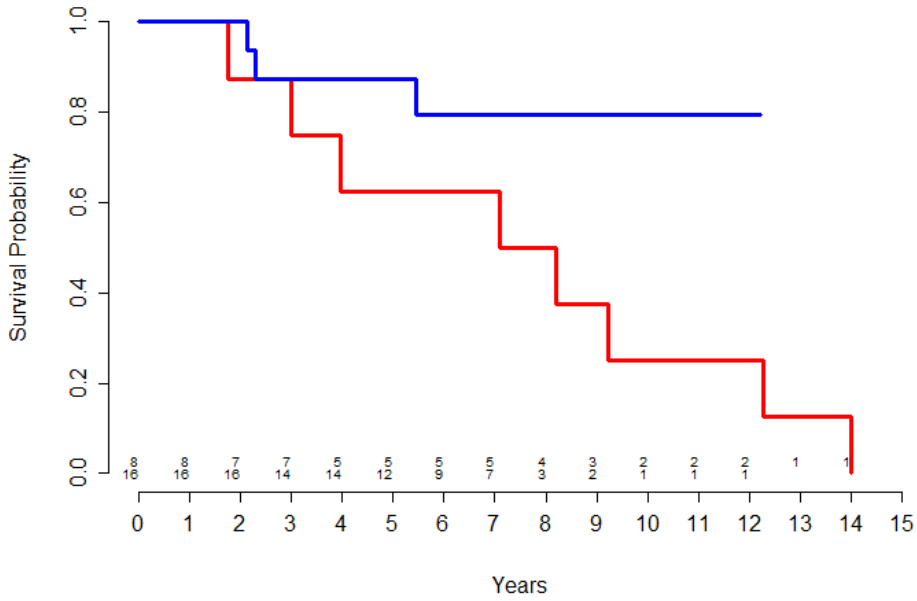


Additional file 5: Overall survival of patients bearing non-progressors (blue) and progressors (red)



Additional file 5: Overall survival of patients bearing non-progressors (blue) and progressors (red) ccRCC ($p=0.078$). During the follow-up three deaths, unrelated to ccRCC diagnosis, also occurred in the non-progressor group. All other patients were censored once the end of their follow-up was met

