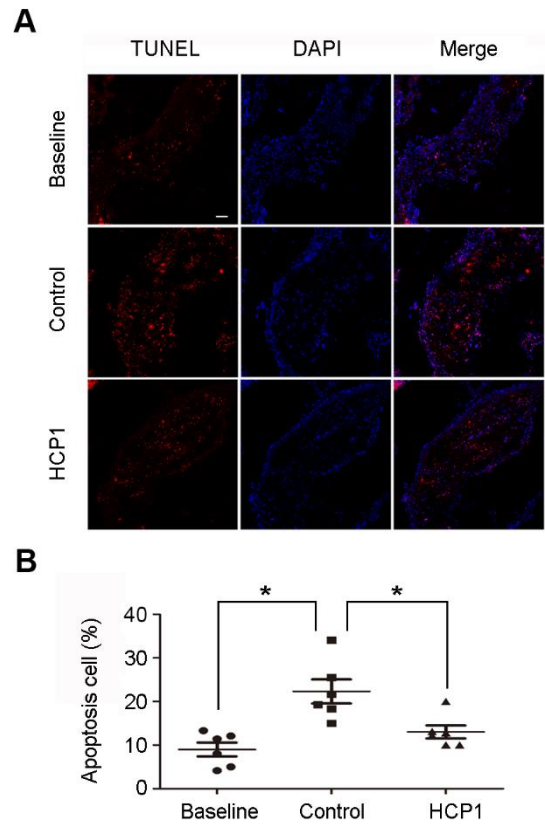
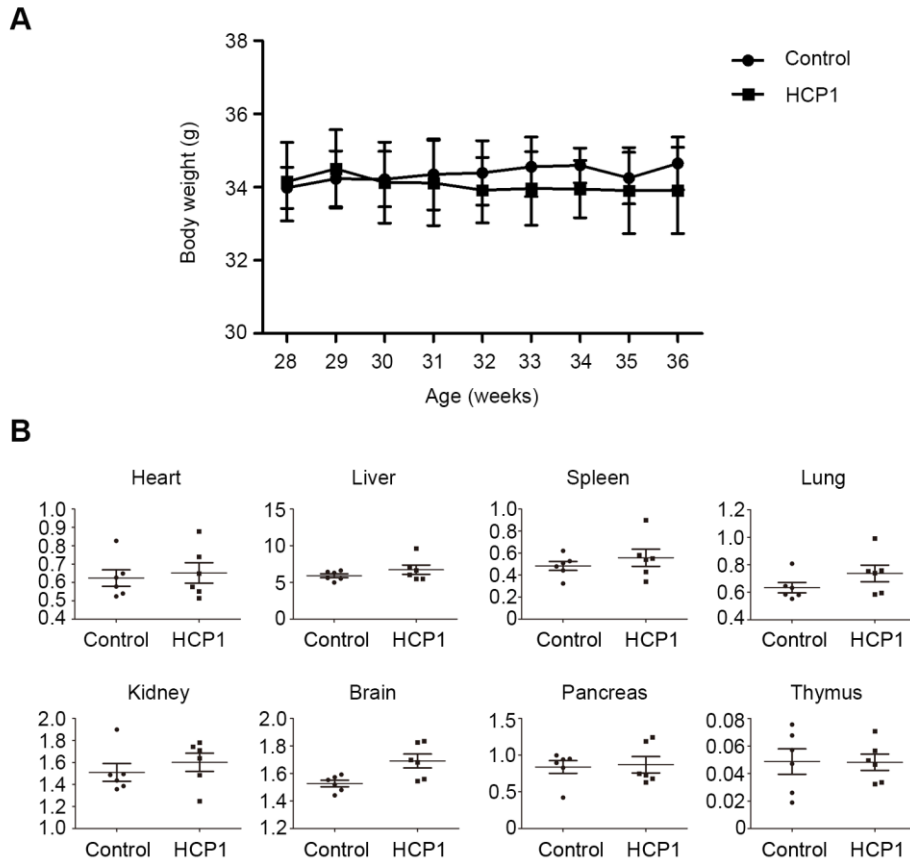


Supplementary Material



Supplementary Figure 1. HCP1 inhibited apoptosis in aortic root lesions of apoE^{-/-} mice. (A) Sections from the mice aortic roots were labeled by TUNEL to detect apoptotic cells and counterstained with DAPI to detect nuclei. Scale bar, 50 μ m. (B) Quantification of TUNEL-positive

cells in the plaque area. Data are mean \pm SEM; * $p < 0.05$; $n=6$. Statistical analyses were performed using one-way ANOVA.



Supplementary Figure 2. Effects of HCP1 on body weight and organ coefficients in apoE^{-/-} mice. (A) Body weight was measured every week during intraperitoneal injection period. (B) Organ coefficients of apoE^{-/-} mice. Data are mean \pm SEM; $n=6$. Statistical analyses were performed using a two-tailed unpaired t-test.