

# BMJ Paediatrics Open

BMJ Paediatrics Open is committed to open peer review. As part of this commitment we make the peer review history of every article we publish publicly available.

When an article is published we post the peer reviewers' comments and the authors' responses online. We also post the versions of the paper that were used during peer review. These are the versions that the peer review comments apply to.

The versions of the paper that follow are the versions that were submitted during the peer review process. They are not the versions of record or the final published versions. They should not be cited or distributed as the published version of this manuscript.

BMJ Paediatrics Open is an open access journal and the full, final, typeset and author-corrected version of record of the manuscript is available on our site with no access controls, subscription charges or pay-per-view fees (<http://bmjpaedsopen.bmj.com>).

If you have any questions on BMJ Paediatrics Open's open peer review process please email [info.bmjpo@bmj.com](mailto:info.bmjpo@bmj.com)

# BMJ Paediatrics Open

## Medical cannabis for severe treatment resistant epilepsy in children – A case series of ten patients

Journal:	<i>BMJ Paediatrics Open</i>
Manuscript ID	bmjpo-2021-001234
Article Type:	Original research
Date Submitted by the Author:	21-Jul-2021
Complete List of Authors:	Zafar, Rayyan; Imperial College London, Brain Sciences; DrugScience Nutt, David; Imperial College London, Department of Brain Sciences; DrugScience Schlag, Anne; Imperial College London, Department of Brain Sciences; DrugScience Phillips, Lawrence; The London School of Economics and Political Science; DrugScience
Keywords:	Neurology, Pharmacology

SCHOLARONE™  
Manuscripts



I, the Submitting Author has the right to grant and does grant on behalf of all authors of the Work (as defined in the below author licence), an exclusive licence and/or a non-exclusive licence for contributions from authors who are: i) UK Crown employees; ii) where BMJ has agreed a CC-BY licence shall apply, and/or iii) in accordance with the terms applicable for US Federal Government officers or employees acting as part of their official duties; on a worldwide, perpetual, irrevocable, royalty-free basis to BMJ Publishing Group Ltd ("BMJ") its licensees and where the relevant Journal is co-owned by BMJ to the co-owners of the Journal, to publish the Work in this journal and any other BMJ products and to exploit all rights, as set out in our [licence](#).

The Submitting Author accepts and understands that any supply made under these terms is made by BMJ to the Submitting Author unless you are acting as an employee on behalf of your employer or a postgraduate student of an affiliated institution which is paying any applicable article publishing charge ("APC") for Open Access articles. Where the Submitting Author wishes to make the Work available on an Open Access basis (and intends to pay the relevant APC), the terms of reuse of such Open Access shall be governed by a Creative Commons licence – details of these licences and which [Creative Commons](#) licence will apply to this Work are set out in our licence referred to above.

Other than as permitted in any relevant BMJ Author's Self Archiving Policies, I confirm this Work has not been accepted for publication elsewhere, is not being considered for publication elsewhere and does not duplicate material already published. I confirm all authors consent to publication of this Work and authorise the granting of this licence.

# Medical cannabis for severe treatment resistant epilepsy in children – A case series of ten patients

Rayyan Raja Zafar<sup>1,3</sup>, Anne Katrin Schlag<sup>1,3</sup>, Lawrence Phillips<sup>2,3</sup>,  
David Nutt<sup>1,3</sup>

<sup>1</sup> Centre for Neuropsychopharmacology and Psychedelic research, Department of Brain Sciences, Faculty of Medicine, Imperial College London, Hammersmith Hospital Campus, Du Cane Road London W12 0NN

<sup>2</sup> London School of Economics and Political Science, Houghton Street, London, WC2A 2AE

<sup>3</sup> Drug Science, London, UK

\*Corresponding author

Professor David Nutt DM FRCP FRCPsych FMedSci DLaws

Edmond J Safra Chair and Head

Centre for Neuropsychopharmacology and Psychedelic research

Department of Brain Sciences

Faculty of Medicine

Imperial College London

Hammersmith Hospital Campus

Du Cane Road

London W12 0NN

Tel: +44 (0)20 7594 6628/7047

Fax: +44 (0)20 7594 6548

d.nutt@imperial.ac.uk

Word count: 2521

## Abstract

### Objectives

Here we report the findings of a case series of ten children suffering with intractable epilepsies in the UK to determine the feasibility for using whole-plant cannabis medicines to treat seizures in children.

### Setting

This study was conducted retrospectively through collecting clinical data from carers and clinicians on study outcome variables. Participants were recruited through the MedCann Support and End our Pain charity groups which are patient representative groups that support children who are using medical cannabis to treat their epilepsies. Medicines were administered to patients by clinicians in both NHS and private medical practices. Follow up calls were conducted throughout the period January 2021 to May 2021 to keep data recorded up to date.

### Participants

Ten children, 18 years old or less, with intractable epilepsies were recruited from two charities. There were no limitations on diagnosis, sex or ethnic origin.

### Interventions

Participants were treated with a range of whole-plant medical cannabis oils. Individual dosing regimens were determined by clinicians.

### Primary outcome measure

The primary objective was to assess the impact of this treatment on seizure frequency.

### Results

Seizure frequency across all ten participants reduced by 86% with no significant adverse events. Participants reduced use of AEDs from seven to one following treatment. We also note significant financial costs to obtain these medicines through private prescriptions.

### Conclusions

This study establishes the feasibility of whole-plant medical cannabis as an effective and well-tolerated medicine for reducing seizure frequency in children suffering with intractable epilepsies. We encourage specialist physicians to prescribe for such patients within the NHS and for regulatory bodies to adapt their recommendations and permit greater access for these medicines.

### Key words

Epilepsy, Neurology, Paediatric neurology, Clinical Pharmacology, Medical Cannabis, Cannabis based medicinal products (CBMPs)

## Key Messages

What is known about the subject?

- Since the 1800s there has been significant anecdotal evidence of the value of medicinal cannabis in treating childhood epilepsies
- There have been 4 successful RCTs showing the therapeutic efficacy of cannabidiol (CBD) for the treatment of Lennox-Gastaut, Dravet's and Tuberous sclerosis syndrome
- There is little available scientific evidence available that has investigated whole-plant cannabis medicines containing THC in paediatric epilepsies.

What this study adds?

- The reduction of seizures in all 10 children demonstrates feasibility for this form of treatment in patients with paediatric intractable epilepsies
- These findings justify the potential value of further research into the reported therapeutic benefit of whole-plant medicinal cannabis products

## Introduction

Though used for millennia in eastern medicine, the advent of medical cannabis as a therapeutic tool to treat seizures in the west was first noted in 1843 by an Irish physician, Dr O'Shaughnessy. He observed that cannabis tinctures resolved seizures in a febrile infant, thus claiming that medicine had found an anticonvulsant of the highest order<sup>1</sup>. In 1971 both recreational and medical cannabis were made illegal under the Misuse of Drugs Act 1971 and so cannabis research largely ceased. Led by parents whose children had responded well to whole-plant medical cannabis extracts but who had failed on conventional anti-epileptic drugs (AEDs) and purified cannabidiol (Epidiolex), medical cannabis was re-initiated as a medicine in the British pharmacopeia in 2018.

Despite the change in legal status of medical cannabis, most of these children have not benefited as to date there has been only 3 NHS Cannabis based medicinal product (CBMPs) prescriptions made in total and only 2 to children<sup>2</sup>. Many patients are thus forced to resort to private treatment which costs up to £2000 per month<sup>3</sup>.

Reasons for this resistance are multifactorial<sup>4,5</sup>. One of the most argued by clinicians who might be prescribers is the lack of evidence for efficacy of medical cannabis. By this they usually mean that there are no randomised controlled trials (RCTs) that prove efficacy and without these they are not prepared to prescribe. To a lesser extent this has also limited National Institute for Clinical and Healthcare Excellence (NICE) support<sup>6</sup>. It is generally accepted that the RCTs though powerful are not the only means to generate evidence for the value of treatments. The previous head of NICE and the Medicines Healthcare Regulatory Agency (MHRA) Sir Michael Rawlins in his 2008 Royal College of Physicians Harveian lecture argued that there are many other ways of collecting useful clinical evidence highlighting:

'Randomised controlled trials, long regarded at the 'gold standard' of evidence, have been put on an undeserved pedestal. Their appearance at the top of 'hierarchies' of evidence is inappropriate; and hierarchies, themselves, are illusory tools for assessing evidence. They should be replaced by a diversity of approaches that involve analysing the totality of the evidence-base'<sup>7</sup>.

1  
2  
3  
4 In a recent position statement, NICE declared their willingness to acknowledge additional  
5 data sources including 'real world' data and 'relevant data collected outside of the context of  
6 traditional trials'<sup>8</sup>. One of these other sources of data, real world evidence (RWE) comes  
7 from patient case series with before and after outcome measures. These are particularly  
8 useful for conditions where RCTs are unlikely or impossible to perform in examples of rare  
9 and undiagnosable conditions and especially in paediatric medicine. For this reason, we have  
10 conducted an outcome assessment of the use of medical cannabis in 10 children with severe  
11 treatment-resistant epilepsy who have all failed on multiple traditional anti-epileptic drugs  
12 (AEDs) and many of whom have failed on the licensed cannabidiol (CBD) preparation  
13 Epidyolex. Epidyolex is a licensed, pharmaceutical grade, purified CBD medicinal product  
14 that is produced by GW Pharma. It is the first and only approved prescription CBD. It is  
15 approved to treat seizures associated with Lennox-Gastaut syndrome (LGS), Dravet  
16 syndrome or tuberous sclerosis complex (TSC) in patients 1 year of age and over.  
17  
18  
19

20  
21 Our previous study, a real-world open label retrospective study of the impact of medical  
22 cannabis in ten patients found whole plant extracts to be superior to CBD isolate and a mean  
23 80% reduction in seizure frequency in a range of intractable childhood epilepsies where  
24 standard treatment had failed<sup>3</sup>.  
25

## 26 27 Methods

### 28 29 *Study design*

30 We recruited participants through two charities, MedCann Support and End Our Pain, which  
31 represent children who are using medical cannabis to treat their intractable epilepsies. At the  
32 time of the study there were a total of 40 participants across both charities that were using  
33 whole-plant medical cannabis products to treat their epilepsies. The study team liaised with  
34 these charities to disseminate the research proposal and participant information sheets to  
35 potential participants via the charities email database and social media pages. A total of 26  
36 participants subsequently provided consent for involvement in the study and provided data on  
37 study outcome measures. Ten of these are reported in Zafar et al. 2020. Of the remaining 16  
38 participants, only ten participants are involved in this current study. The attrition of six  
39 participants were due to missing data (n=5) and being over the age of 18 (n=1). Participant's  
40 data were collected from their parents or carers via telephone or video conference calls for  
41 the period January 2021 to May 2021.  
42  
43  
44

### 45 46 *Patient and Public involvement*

47 Participants, parents, and clinicians helped to design the variables and information collected  
48 in the study. Working closely with patient groups will ensure the results are disseminated to  
49 relevant stakeholders, including patient representative groups and clinical governance bodies.  
50

### 51 52 *Participants*

53 We engaged carers of patients, following their consent to engage in the study, to provide  
54 information on patients age, diagnoses, current AED's, previous AEDs, previous CBMPs,  
55 current CBMPs, monthly seizure frequency pre and post initiation of CBMPs, dose of THC  
56 and CBD and cost of CBMPs. Data were confirmed with clinician reports where available.  
57

### 58 59 *Study medication*

All participants received whole plant extract CBMPs either through private prescription or through the NHS. The CBMPs used included Bedrolite (<1% THC and 9% CBD), Bedica (14% THC and <1% CBD), Celixir 20 (<1% THC and 20% CBD), Sweet pink CBD (<1% THC and 10.6% CBD), Althea 100 (<1% CBD and 10% CBD). The prescription of these medicines was initiated by clinicians and all participants continued to use these medicines at the last follow up call. Individual dosing regimens are described in Table 1.

### Statistical analysis

Descriptive analysis on group percentage change in seizure outcome are provided. Other variables including mean AED use pre and post initiation of CBMP and mean cost are also described. Appropriate Spearman's correlational analysis was used to analyse the relationship between the ratio of prescribed THC: CBD to changes in seizure frequency. No significance testing was performed due to the lack of randomisation<sup>9</sup>.

### Ethics approval

The study was approved by Imperial College Research Ethics Committee (20IC5830 ICREC Committee (01/05/2020).

## Results

### Clinical and demographic details

A total of 10 patients were included in the current study. The mean age of participants was 6.2 years old (range 1-13). All clinical and demographic details can be viewed in the table.

Table 1: Demographic and clinical data from 10 patients enrolled in the study

Patient	Age	Previous CBMP Medication	Current CBMP Medication	Daily Dose of CBMP Medication (ml)	Daily dose of THC (mg)	Daily dose of CBD (mgs)	Monthly seizures Pre CBMP	Monthly seizures Post CBMP	% Reduction in monthly seizure frequency	Monthly CBMP Cost
1	6	Epidilox, Bedrolite, Bedica, Bedrocan, THC-A, Charlottes web	Sweet Pink CBD	2 ml	3.8	200	28	5	82	£1600
2	3	Charlottes Web / Hayleighs Hope / Bedrolite and Bedica	Celixir20	2.2ml	6	225	2,800	560	80	£500
3	7	Epidilox	Bedrolite	1.4ml	4.2	140	600	0	100	£995.97
4	5	ND	Sweet Pink CBD	1.8ml	5.4	180	120	45	62.5	£200
5	4	ND	Bedrolite	1.2ml	3.6	120	2250	225	90	£1300
6	9	Charlottes webb, Hayleighs hope, over the counter CBD	Bedrolite + Bedrocan	3.6ml Bedrolite	14	360	600	10	98	0
7	13	Bedrolite	Celixir20 and Althea100	0.9 ml Celixir20, 0.2ml Althea100	2.9	110	305	42	86	£1389
8	9	Bedrolite and Bedica	Celixir20	0.75ml	2	75	45	5	89	£400
9	5	ND	Bedrolite	1.4ml	4.2	140	800	100	87.5	£730
10	1	Haleighs Hope	Bedrolite + Bedica	1.68ml Bedrolite, 0.1ml Bedica	5.4	168	130	15	88	£750



### *Epileptic Aetiologies*

The patients presented with a range of epileptic aetiologies including predefined syndromes, rare genetic disorders and undiagnosed epileptic encephalopathies. Two patients presented genetic aetiologies (PCDH19 mutation, chromosome deletion), one with Dravets syndrome, one with Doose syndrome, two with CDKL5 deficiency disorder, one with West syndrome, one with Rett Syndrome, one with Aicardi syndrome and one with undiagnosed refractory epilepsy.

### *Comorbid diagnosis*

Three of the participants presented with multiple comorbid diagnoses. The most reported being Infantile spasms (N=2), learning disabilities (N=1) and global developmental delay (N=1)

### *Medication*

Patients reported a mean of 7 ( $\pm$  4.58) anti-epileptic drugs prior to initiation of CBMPs which reduced to a mean of 1 ( $\pm$  1.23) per patient with 7 patients managing to completely wean off all AEDs. The most common secondary intervention in the cohort was a ketogenic diet (N=4) prior to initiation of CBMP which was not effective in any patient and was subsequently discontinued. One patient had a current vagal nerve stimulation implant.

Two patients using Epidyolex had failed to respond to this NICE recommended CBMP for treatment resistant epilepsy.

One patient saw a significant worsening of symptoms including an increase in seizure frequency when switching from Bedrolite and Bedica products to other whole-plant CBMPs. The other three patients that changed CBMPs from Bedrolite and Bedica to other products noted burden of cost as the primary reason for switching product, though all these patients reported the efficacy of Bedrolite and Bedica in reducing seizure frequency.

### *Seizure frequency*

Figure 1 shows the findings from the ten participants enrolled in this case-series. Here we show individual and mean changes in seizure frequency pre and post initiation of CBMP (Note log 10 scale).

The monthly seizure frequency reduced for all 10 patients with an overall mean of 86%.

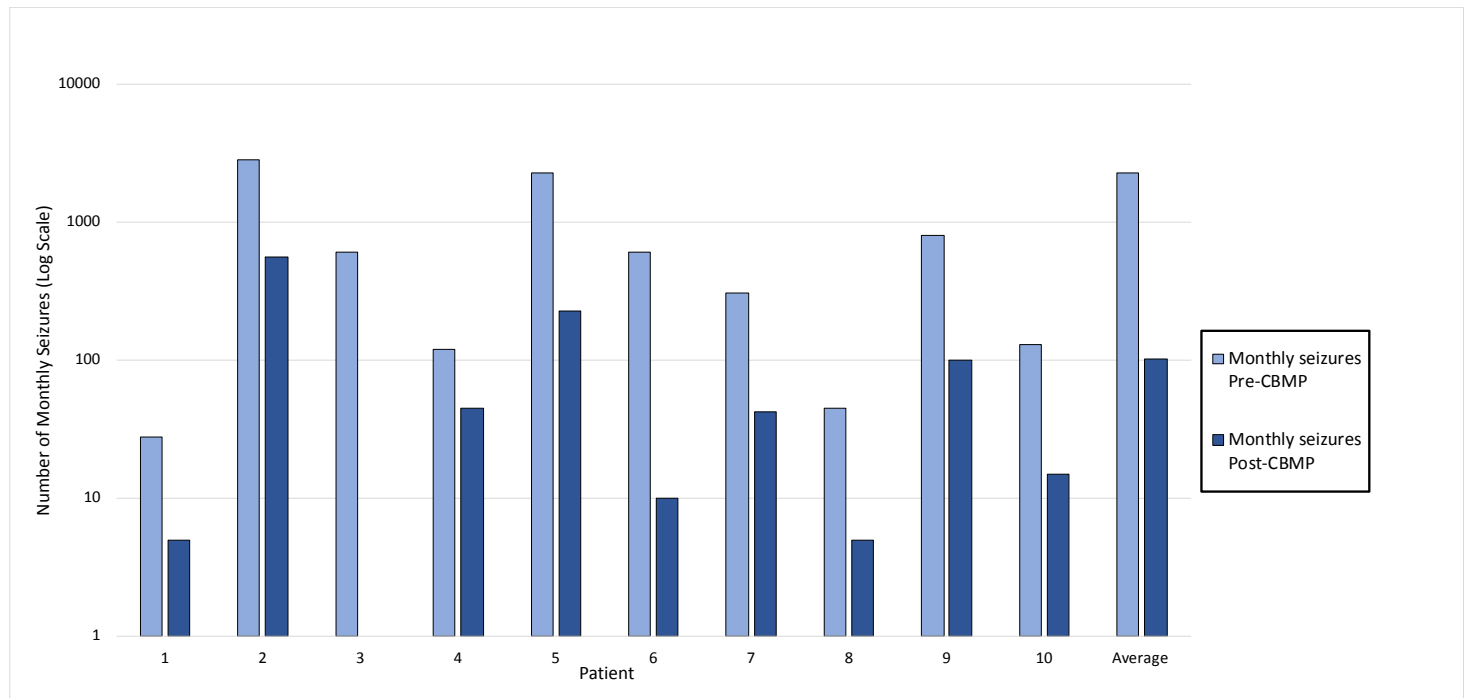


Figure 1. Monthly seizure frequency pre and post CBMP in ten patients suffering with childhood-onset severe intractable epilepsies

#### *Dose of CBMP*

All patients were using whole-plant cannabis products which contain a range of terpenes, flavonoids and minor phytocannabinoids. We are currently in process of analysing the respective components of each medication in this study which we plan to report on. For this study we are only able to report on the respective doses of THC and CBD. For THC dosage, patients consumed a mean (SD) of 5.15(± 6.8) mg of THC a day and for CBD 171.8 (± 153.3) mg of CBD daily.

#### *Correlational analysis of CBMP*

We correlated the THC: CBD dose ratio against the percent reduction in monthly seizure frequency to see if there were any effects of dosage on reported outcomes. Spearman's rho revealed a non-significant relationship between THC:CBD ratio and changes in seizure frequency ( $r_s = 0.271$ ,  $9 = 0.292$ ). However, a non-significant trend in the data indicated higher THC dose to be associated with greater reductions in seizure frequency.

#### *Cost*

The mean cost for participants medical cannabis prescription was £874 per month. One participant had obtained their medical cannabis prescription for free on the NHS.

#### *Other symptoms*

Parents and carers reported significant improvements in health and wellbeing of their children following initiation of whole-plant CBMPs. Particularly, these improvements were noted in sleep, eating, behaviour and cognition. A subset of eleven of these patients across this study and our previous one<sup>3</sup> qualitatively analysed these improvements which are reported in Schlag et al, 2021 (in press). We did not specifically ask for adverse effects, we

1  
2  
3 asked parents to note if there were any adverse effects in these interviews, but none were  
4 reported.  
5

## 6 7 Discussion

8 This study shows the effectiveness of whole-plant medical cannabis in a group of patients  
9 suffering with severe intractable childhood-onset epilepsies. The finding of a mean reduction  
10 of 86% in monthly seizure frequency in our (N=10) group demonstrates the feasibility for  
11 this medication in such patients. There were no adverse effects reported in response to  
12 medical cannabis treatment, and carers reported sustained and significant improvements in  
13 behavioural, psychological and cognitive faculties associated with medical cannabis use.  
14  
15

16 Our findings are in line with several observational and controlled interventional studies that  
17 have seen significant reductions in seizure frequency following treatment with medical  
18 cannabis. Nonetheless, our data, unlike others in the field, suggest that whole-plant medical  
19 cannabis products are superior to isolated CBD products in the patients we examined. To  
20 date, double-blind placebo controlled RCT evidence is only available for isolate CBD in  
21 three rare forms of epilepsy; Lennox Gastaut syndrome (LG), Dravet syndromes and  
22 Tuberous Sclerosis complex<sup>10, 11, 12, 13</sup>. One such study showed a reduction of 22.8% in  
23 seizures in children with Dravet syndrome<sup>10</sup> while another study by the same author in LG  
24 patients using CBD isolate reported a 42% reduction in drop seizures<sup>11</sup>. To expand on this  
25 Thiele et al (2018)<sup>12</sup> conducted a similar double-blind placebo controlled RCT in patients  
26 with LG and similarly reported a 44% decrease in drop seizure frequency in the CBD isolate  
27 group. A more recent interim analysis of a study by Thiele et al (2019)<sup>13</sup> sought to examine  
28 the effects of add-on CBD isolate to standardised treatment for seizures associated with  
29 Tuberous Sclerosis Complex, finding a 48% reduction in seizures versus 27% for placebo.  
30 From the RCT evidence alone it is clear that CBD isolate is a safe but not especially effective  
31 intervention for seizures in LG, Dravet and Tuberous Sclerosis Complex.  
32  
33  
34  
35

36 As noted by Rawlings<sup>7</sup> there are several limitations of RCTs in assessing evidence for novel  
37 medical interventions. For example, the strict inclusion and exclusion criteria of such studies  
38 limits the generalisability of findings. This is of particular importance in the case of  
39 paediatric-onset intractable epilepsies where the majority of epilepsies diagnosed under the  
40 age of 15 are of idiopathic origin<sup>14</sup>. Thus, observational retrospective studies such as ours  
41 allow for a wider participation and a broader patient pool to aid in understanding the scope of  
42 medical cannabis as an intervention.  
43  
44

45 Further, placebo-controlled designs fail to show clinicians the value of the intervention  
46 relative to standard AEDs or previous care. Moreover, observational studies allow physicians  
47 to understand the prescribing history of patients and reflect the effects of clinical decisions  
48 rather than RCT driven research interventions with stringent, mildly clinically translatable  
49 and often biasedly selected primary endpoints<sup>15</sup>.  
50  
51

52 There are also significant risk and ethical implications associated with randomising children  
53 suffering with epilepsy to placebo arms and delaying their treatment. One meta-analysis of  
54 placebo controlled randomised trials with AEDs reported a 7-fold increase in risk of sudden  
55 unexpected death in epilepsy (SUDEP) in those randomised to a placebo arm<sup>16</sup>.  
56  
57

58 Current NICE guidance, limiting prescribing for medical cannabis for this patient group to  
59 cannabidiol in the form of Epidyolex, has relied on just a few RCTs in a limited range of  
60 diagnoses. Both of the children in our sample had failed on Epidyolex. For this reason, NICE

guidance has recently been updated to clarify that this should not deter clinicians from prescribing off-license medical cannabis products such as the whole-plant cannabis medicines of which our data give clear support for such prescribing.

Further research is required to elucidate the mechanisms by which the respective additive constituents of whole-plant products lead to superior clinical results. Several encouraging pre-clinical lines of work highlight the anti-convulsive and neuroprotective roles of several minor phytocannabinoids including CBDV, D9-THCV and CBG<sup>17</sup>. THC exerts its anticonvulsant effects via activation of the CB1 receptor and subsequent modulation of glutamatergic excitatory activity in the brain<sup>18</sup>. Nonetheless, the investigation of the putative anti-convulsant effects of these cannabinoids needs to be investigated in-vivo to gain a full appreciation for their therapeutic efficacy.

Mitigating risk is the cornerstone of clinical judgement and there are some opponents of the therapeutic use of THC in children and adolescence. Concern over the deleterious effects of whole-plant medical cannabis must be compared with the known iatrogenic effects of mainline AEDs. One randomised clinical trial of phenobarbital when used chronically for seizure prophylaxis found significant impairment of developmental trajectories<sup>19</sup> as well as a large decrease in global IQ and verbal learning<sup>20</sup>. In another double blind RCT valproate was seen to be associated with poorer attentional performance compared with other AEDs<sup>21</sup>.

Additionally, adverse effects from AEDs are the leading cause of treatment discontinuation and after seizure frequency, the major determinant of impaired health-related quality of life in people suffering with epilepsy. Our patient group almost universally reported highly improved cognitive and behavioural outcomes, likely due both to reduced seizure frequency and reduced use of other AEDs.

Finally, we should make it clear that in other medical indications, data obtained other than from RCTs can and does get used by medical regulators. A recent systematic review found that between 1999 and 2014 over 76 unique marketing authorisations were granted without RCT results<sup>22</sup>. Very recently one such drug, Zolgensma<sup>23</sup> for the severe paediatric condition Spinal Muscular Atrophy gained approval on a single-arm open label design with 15 patients.

We believe that our data on whole-plant medical cannabis in childhood-onset severe treatment-resistant epilepsy, provides evidence to encourage its introduction into the NHS within current NICE prescribing guidelines. Such a move would be hugely beneficial to the families, who in addition to having the psychological distress of looking after their chronically ill children, have also to cover the crippling financial burden of their medication.

### Data Sharing statement

All the Individual participant data will be available after de-identification and is presented in the table of the manuscript for access by researchers or interested parties.

### Author's contributions

RRZ, DJN and LDP analysed the data. All authors developed the initial manuscript and all authors reviewed and agreed to the final manuscript

### Conflicts of Interest

AKS is Head of Research for the charity Drug Science, which receives an unrestricted educational grant from a consortium of medical cannabis companies. RRZ, LDP and DJN declare no competing interests.

## Funding

No funding was received for the writing of this article.

## References

1. O'Shaughnessy W. On the Preparations of the Indian Hemp, or Gunjah: Cannabis Indica Their Effects on the Animal System in Health, and their Utility in the Treatment of Tetanus and other Convulsive Diseases. *BMJ*. 1843;s1-5(123):363-369.
2. Conservative Drug Policy Reform Group. UK Review of Medicinal Cannabis. 2020.
3. Zafar R, Schlag A, Nutt D. Ending the pain of children with severe epilepsy? An audit of the impact of medical cannabis in 10 patients. *Drug Science, Policy and Law*. 2020;6:205032452097448.
4. Nutt D. Why medical cannabis is still out of patients' reach—an essay by David Nutt. *BMJ*. 2019;:11903.
5. Nutt D, Bazire S, Phillips L, Schlag A. So near yet so far: why won't the UK prescribe medical cannabis?. *BMJ Open*. 2020;10(9):e038687.
6. National Institute of Health and Care Excellence. Cannabis-based medicinal products NICE guideline [NG144]. London; 2021.
7. The Royal College of physicians: Sir Michael Rawlins attacks traditional ways of assessing evidence, opinion former article [Internet]. Politics. 2008 [cited 30 April 2021]. Available from: <https://www.politics.co.uk/opinion-formers/royal-college-of-physicians/article/royal-college-of-physicians-sirmichael-rawlins-attacks-trad>
8. National Institute of Health and Care Excellence. Widening the evidence base: use of broader data and applied analytics in NICE's work. London; 2020.
9. Byar D, Schoenfeld D, Green S, Amato D, Davis R, De Gruttola V et al. Design Considerations for AIDS Trials. *N Engl J Med*. 1990;323(19):1343-1348.
10. Devinsky O, Cross J, Laux L, Marsh E, Miller I, Nabbout R et al. Trial of Cannabidiol for Drug-Resistant Seizures in the Dravet Syndrome. *N Engl J Med*. 2017;376(21):2011-2020.
11. Devinsky O, Patel A, Cross J, Villanueva V, Wirrell E, Privitera M et al. Effect of Cannabidiol on Drop Seizures in the Lennox-Gastaut Syndrome. *N Engl J Med*. 2018;378(20):1888-1897.
12. Thiele E, Marsh E, French J, Mazurkiewicz-Beldzinska M, Benbadis S, Joshi C et al. Cannabidiol in patients with seizures associated with Lennox-Gastaut syndrome (GWPCARE4): a randomised, double-blind, placebo-controlled phase 3 trial. *Lancet*. 2018;391(10125):1085-1096.

13. Thiele E, Marsh E, Mazurkiewicz-Beldzinska M, Halford J, Gunning B, Devinsky O et al. Cannabidiol in patients with Lennox-Gastaut syndrome: Interim analysis of an open-label extension study. *Epilepsia*. 2019;60(3):419-428.
14. Dragoumi P, Tzetzis O, Vargiami E, Pavlou E, Krikonis K, Kontopoulos E et al. Clinical course and seizure outcome of idiopathic childhood epilepsy: determinants of early and long-term prognosis. *BMC Neurology*. 2013;13(1).
15. Shorvon S, Schmidt D. The right and the wrong with epilepsy and her science. *Epilepsia Open*. 2016;1(3-4):76-85.
16. Ryvlin P, Cucherat M, Rheims S. Risk of sudden unexpected death in epilepsy in patients given adjunctive antiepileptic treatment for refractory seizures: a meta-analysis of placebo-controlled randomised trials. *Lancet Neuro*. 2011;10(11):961-968.
17. Farrelly A, Vlachou S, Grintzalis K. Efficacy of Phytocannabinoids in Epilepsy Treatment: Novel Approaches and Recent Advances. *International Journal of Environmental Research and Public Health*. 2021;18(8):3993.
18. Monory K, Massa F, Egertová M, Eder M, Blaudzun H, Westenbroek R et al. The Endocannabinoid System Controls Key Epileptogenic Circuits in the Hippocampus. *Neuron*. 2006;51(4):455-466.
19. Farwell J, Lee Y, Hirtz D, Sulzbacher S, Ellenberg J, Nelson K. Phenobarbital for Febrile Seizures — Effects on Intelligence and on Seizure Recurrence. *N Engl J Med*. 1990;322(6):364-369.
20. Loring D, Meador K. Cognitive side effects of antiepileptic drugs in children. *Neurology*. 2004;62(6):872-877.
21. Glauser T, Cnaan A, Shinnar S, Hirtz D, Dlugos D, Masur D et al. Ethosuximide, Valproic Acid, and Lamotrigine in Childhood Absence Epilepsy. *N Engl J Med*. 2010;362(9):790-799.
22. Hatswell A, Baio G, Berlin J, Irs A, Freemantle N. Regulatory approval of pharmaceuticals without a randomised controlled study: analysis of EMA and FDA approvals 1999–2014. *BMJ Open*. 2016;6(6):e011666.
23. Mendell J, Al-Zaidy S, Shell R, Arnold W, Rodino-Klapac L, Prior T et al. Single-Dose Gene-Replacement Therapy for Spinal Muscular Atrophy. *N Engl J Med*. 2017;377(18):1713-1722.

# BMJ Paediatrics Open

## Medical cannabis for severe treatment resistant epilepsy in children – A case series of ten patients

Journal:	<i>BMJ Paediatrics Open</i>
Manuscript ID	bmjpo-2021-001234.R1
Article Type:	Original research
Date Submitted by the Author:	21-Sep-2021
Complete List of Authors:	Zafar, Rayyan; Imperial College London, Brain Sciences; DrugScience Schlag, Anne; Imperial College London, Department of Brain Sciences; DrugScience Phillips, Lawrence; The London School of Economics and Political Science; DrugScience Nutt, David; Imperial College London, Department of Brain Sciences; DrugScience
Keywords:	Neurology, Pharmacology

SCHOLARONE™  
Manuscripts





I, the Submitting Author has the right to grant and does grant on behalf of all authors of the Work (as defined in the below author licence), an exclusive licence and/or a non-exclusive licence for contributions from authors who are: i) UK Crown employees; ii) where BMJ has agreed a CC-BY licence shall apply, and/or iii) in accordance with the terms applicable for US Federal Government officers or employees acting as part of their official duties; on a worldwide, perpetual, irrevocable, royalty-free basis to BMJ Publishing Group Ltd ("BMJ") its licensees and where the relevant Journal is co-owned by BMJ to the co-owners of the Journal, to publish the Work in this journal and any other BMJ products and to exploit all rights, as set out in our [licence](#).

The Submitting Author accepts and understands that any supply made under these terms is made by BMJ to the Submitting Author unless you are acting as an employee on behalf of your employer or a postgraduate student of an affiliated institution which is paying any applicable article publishing charge ("APC") for Open Access articles. Where the Submitting Author wishes to make the Work available on an Open Access basis (and intends to pay the relevant APC), the terms of reuse of such Open Access shall be governed by a Creative Commons licence – details of these licences and which [Creative Commons](#) licence will apply to this Work are set out in our licence referred to above.

Other than as permitted in any relevant BMJ Author's Self Archiving Policies, I confirm this Work has not been accepted for publication elsewhere, is not being considered for publication elsewhere and does not duplicate material already published. I confirm all authors consent to publication of this Work and authorise the granting of this licence.



# Medical cannabis for severe treatment resistant epilepsy in children – A case series of ten patients

Rayyan Raja Zafar<sup>1,3</sup>, Anne Katrin Schlag<sup>1,3</sup>, Lawrence Phillips<sup>2,3</sup>,  
David Nutt<sup>1,3</sup>

<sup>1</sup> Centre for Neuropsychopharmacology and Psychedelic research, Department of Brain Sciences, Faculty of Medicine, Imperial College London, Hammersmith Hospital Campus, Du Cane Road London W12 0NN

<sup>2</sup> London School of Economics and Political Science, Houghton Street, London, WC2A 2AE

<sup>3</sup> Drug Science, London, UK

\*Corresponding author

Professor David Nutt DM FRCP FRCPsych FMedSci DLaws

Edmond J Safra Chair and Head

Centre for Neuropsychopharmacology and Psychedelic research

Department of Brain Sciences

Faculty of Medicine

Imperial College London

Hammersmith Hospital Campus

Du Cane Road

London W12 0NN

Tel: +44 (0)20 7594 6628/7047

Fax: +44 (0)20 7594 6548

d.nutt@imperial.ac.uk

Word count: 2521

## Abstract

### Objectives

To report the findings of a case series of ten children suffering with intractable epilepsies in the UK to determine the feasibility for using whole-plant cannabis medicines to treat seizures in children.

### Setting

This study was conducted retrospectively through collecting clinical data from caretakers and clinicians on study outcome variables. Participants were recruited through the MedCann Support and End our Pain charity groups which are patient representative groups that support children who are using medical cannabis to treat their epilepsies. Medicines were prescribed to patients by clinicians in both NHS and private medical practices. Follow up calls were conducted throughout the period January 2021 to May 2021 to keep data recorded up to date.

### Participants

Ten children, 18 years old or under, with intractable epilepsies were recruited from two charities. There were no limitations on diagnosis, sex or ethnic origin.

### Interventions

Participants were treated with a range of whole-plant medical cannabis oils. Individual dosing regimens were determined by clinicians.

### Primary outcome measure

The primary outcome measure was seizure frequency

### Results

Seizure frequency across all ten participants reduced by 86% with no significant adverse events. Participants reduced use of anti-epileptic drugs from an average of seven to one following treatment with medical cannabis. We also noted significant financial costs of £874 per month to obtain these medicines through private prescriptions.

### Conclusions

This study establishes the feasibility of whole-plant medical cannabis as an effective and well-tolerated medicine for reducing seizure frequency in children suffering with intractable epilepsies. These findings justify the potential value of further research into the reported therapeutic benefit of whole-plant medicinal cannabis products

### Key words

Epilepsy, Neurology, Paediatric neurology, Clinical Pharmacology, Medical Cannabis, Cannabis based medicinal products (CBMPs)

## Key Messages

What is known about the subject?

- Since the 1800s there has been significant anecdotal evidence of the value of medicinal cannabis in treating childhood epilepsies
- There have been 4 successful RCTs showing the therapeutic efficacy of cannabidiol (CBD) for the treatment of Lennox-Gastaut, Dravet's and Tuberous sclerosis syndrome
- There is limited scientific evidence available that has investigated whole-plant cannabis medicines containing THC in paediatric epilepsies.

What does this study add?

- The reduction of seizures in all 10 children demonstrates feasibility for this form of treatment in patients with paediatric intractable epilepsies
- These findings justify the potential value of further research into the reported therapeutic benefit of whole-plant medicinal cannabis products

## Introduction

Though used for millennia in eastern medicine, the advent of medical cannabis as a therapeutic tool to treat seizures in the west was first noted in 1843 by an Irish physician, Dr O'Shaughnessy. He observed that cannabis tinctures resolved seizures in a febrile infant, thus claiming that medicine had found an anticonvulsant of the highest order<sup>1</sup>. In 1971 both recreational and medical cannabis were made illegal in the UK under the Misuse of Drugs Act 1971 and so cannabis research largely ceased. Led by parents whose children had responded well to whole-plant medical cannabis extracts but who had failed on conventional anti-epileptic drugs (AEDs) and purified cannabidiol (Epidiolex), medical cannabis was re-initiated as a medicine in the British pharmacopeia in 2018.

Cannabis-based medical products (CBMPs) comprise a broad range of medicines. They can be plant-based or synthetic and vary from purified single compounds (often THC or CBD) to complex mixtures of hundreds of molecules, in multiple formulations (oils, solutions, sublingual sprays, tablets and capsules), with multiple delivery mechanisms (oral, nasal, rectal, and inhalation)<sup>2</sup>.

Of the products licensed in the UK, Epidyolex (licensed for the treatment of epilepsy) is an isolate, Sativex (recommended for spasticity associated with Multiple Sclerosis) comprises a 1:1 CBD:THC isolate ratio, and Nabilone (e.g., used to treat nausea and vomiting due to cancer chemotherapy) is a THC analogue.

Zafar et al (2020) previously noted that a combination of both THC and CBD from whole plant extracts were necessary for reducing seizure frequency and superior to CBD alone in children suffering from various forms of epilepsy<sup>3</sup>.

Despite the change in legal status of medical cannabis, most of these children have not benefited as to date there has been only 3 NHS CBMPs prescriptions made in total and only 2 in children<sup>4</sup>. Many patients are thus forced to resort to private treatment which costs up to £2000 per month<sup>3</sup>.

Reasons for this resistance are multifactorial<sup>5,6</sup>. One of the most argued by clinicians who might be prescribers is the lack of evidence for efficacy of medical cannabis. By this they usually mean that there are no randomised controlled trials (RCTs) that prove efficacy and without these they are not prepared to prescribe. To a lesser extent this has also limited National Institute for Clinical and Healthcare Excellence (NICE) support<sup>7</sup>. It is generally accepted that RCTs though powerful are not the only means to generate evidence for the value of treatments. The previous head of NICE and the Medicines Healthcare Regulatory Agency (MHRA) Sir Michael Rawlins in his 2008 Royal College of Physicians Harveian lecture argued that there are many other ways of collecting useful clinical evidence highlighting:

‘Randomised controlled trials, long regarded at the ‘gold standard’ of evidence, have been put on an undeserved pedestal. Their appearance at the top of ‘hierarchies’ of evidence is inappropriate; and hierarchies, themselves, are illusory tools for assessing evidence. They should be replaced by a diversity of approaches that involve analysing the totality of the evidence-base’<sup>8</sup>.

In a recent position statement, NICE declared their willingness to acknowledge additional data sources including ‘real world’ data and ‘relevant data collected outside of the context of traditional trials’<sup>9</sup>. One of these other sources of data, real world evidence (RWE) comes from patient case series with before and after outcome measures. These are particularly useful for conditions where RCTs are unlikely or impossible to perform in examples of rare and idiopathic conditions and especially in paediatric medicine. For this reason, we have conducted an outcome assessment of the use of medical cannabis in 10 children with severe treatment-resistant epilepsy who have all failed on multiple traditional anti-epileptic drugs (AEDs) and many of whom have failed on the licensed cannabidiol (CBD) preparation Epidyolex. Epidyolex is a licensed, pharmaceutical grade, purified CBD medicinal product that is produced by GW Pharma. It is the first and only approved prescription CBD. It is approved to treat seizures associated with Lennox-Gastaut syndrome (LGS), Dravet syndrome or tuberous sclerosis complex (TSC) in patients 1 year of age and over.

Our previous study, a real-world open label retrospective study of the impact of medical cannabis in ten patients found whole plant extracts to be superior to CBD isolate and a mean 80% reduction in seizure frequency in a range of intractable childhood epilepsies where standard treatment had failed<sup>3</sup>. A subsequent qualitative follow-up study highlighted the various benefits patients and their families experienced as a result of treatment with CBMPs<sup>2</sup>.

## Methods

### *Study design*

We recruited participants through two charities, MedCann Support and End Our Pain, which represent children who are using medical cannabis to treat their intractable epilepsies. At the time of the study there were a total of 40 participants across both charities that were using whole-plant medical cannabis products to treat their epilepsies. The study team liaised with these charities to disseminate the research proposal and participant information sheets to potential participants via the charities email database and social media pages. A total of 26 participants subsequently provided consent for involvement in the study and provided data on study outcome measures. Ten of these are reported in Zafar et al. 2020<sup>3</sup>. Of the remaining 16 participants, only ten participants are involved in this current study. The attrition of six

1  
2  
3 participants were due to missing data (n=5) and being over the age of 18 (n=1). Participants'  
4 data were collected from their parents or carers via telephone or video conference calls for  
5 the period January 2021 to May 2021.  
6

### 7 *Study outcomes*

8 The primary study outcome was to assess the percentage change in monthly seizure  
9 frequency in participants following initiation of medical cannabis. The secondary study  
10 outcomes were to assess the impact of medical cannabis on changes in AED use, to report the  
11 concentrations and doses of medical cannabis used by these patients and to document the  
12 costs incurred from attaining these prescriptions.  
13  
14

### 15 *Patient and Public involvement*

16 Participants, parents, and clinicians helped to design the variables and information collected  
17 in the study. Working closely with patient groups will ensure the results are disseminated to  
18 relevant stakeholders, including patient representative groups and clinical governance bodies.  
19  
20

### 21 *Participants*

22 We engaged carers of patients, following their consent to engage in the study, to provide  
23 information on patients age, diagnoses, current AED's, previous AEDs, previous CBMPs,  
24 current CBMPs, monthly seizure frequency pre and post initiation of CBMPs, dose of THC  
25 and CBD and cost of CBMPs. Data were confirmed with clinician reports where available.  
26  
27

### 28 *Study medication*

29 All participants received whole plant extract CBMPs either through private prescription or  
30 through the NHS. The CBMPs used included Bedrolite (<1% THC and 9% CBD), Bedica  
31 (14% THC and <1% CBD), Celixir 20 (<1% THC and 20% CBD), Sweet pink CBD (<1%  
32 THC and 10.6% CBD), Althea 100 (<1% THC and 10% CBD). The prescription of these  
33 medicines was initiated by clinicians and all participants continued to use these medicines at  
34 the last follow up call. Individual dosing regimens are described in Table 1.  
35  
36

### 37 *Statistical analysis*

38 Descriptive analysis on group percentage change in seizure outcome are provided. Other  
39 variables including mean AED use pre and post initiation of CBMP and mean cost are also  
40 described. Appropriate Spearman's correlational analysis was used to analyse the relationship  
41 between the ratio of prescribed THC: CBD to changes in seizure frequency. No significance  
42 testing was performed due to the lack of randomisation<sup>10</sup>.  
43  
44

### 45 *Ethics approval*

46 The study was approved by Imperial College Research Ethics Committee (20IC5830 ICREC  
47 Committee (01/05/2020).  
48  
49

## 50 **Results**

### 51 *Clinical and demographic details*

52 A total of 10 patients were included in the current study. The mean age of participants was  
53 6.2 years old (range 1-13). All clinical and demographic details can be viewed in table 1.  
54  
55  
56  
57  
58  
59  
60

Table 1: Demographic and clinical data from 10 patients enrolled in the study

Patient	Age	Previous CBMP Medication	Current CBMP Medication	Daily Dose of CBMP Medication (ml)	Daily dose of THC (mg)	Daily dose of CBD (mgs)	Monthly seizures Pre CBMP	Monthly seizures Post CBMP	% Reduction in monthly seizure frequency	Monthly CBMP Cost
1	6	Epidilox, Bedrolite, Bedica, Bedrocan, THC-A, Charlottes web	Sweet Pink CBD	2 ml	3.8	200	28	5	82	£1600
2	3	Charlottes Web / Hayleighs Hope / Bedrolite and Bedica	Celixir20	2.2ml	6	225	2,800	560	80	£500
3	7	Epidilox	Bedrolite	1.4ml	4.2	140	600	0	100	£995.97
4	5	ND	Sweet Pink CBD	1.8ml	5.4	180	120	45	62.5	£200
5	4	ND	Bedrolite	1.2ml	3.6	120	2250	225	90	£1300
6	9	Charlottes webb, Hayleighs hope, over the counter CBD	Bedrolite + Bedrocan	3.6ml Bedrolite	14	360	600	10	98	0
7	13	Bedrolite	Celixir20 and Althea100	0.9 ml Celixir20, 0.2ml Althea100	2.9	110	305	42	86	£1389
8	9	Bedrolite and Bedica	Celixir20	0.75ml	2	75	45	5	89	£400
9	5	ND	Bedrolite	1.4ml	4.2	140	800	100	87.5	£730
10	1	Haleighs Hope	Bedrolite + Bedica	1.68ml Bedrolite, 0.1ml Bedica	5.4	168	130	15	88	£750

### *Epileptic Aetiologies*

The patients presented with a range of epileptic aetiologies including predefined syndromes, rare genetic disorders and undiagnosed epileptic encephalopathies. Two patients presented genetic aetiologies (PCDH19 mutation, chromosome deletion), one with Dravets syndrome, one with Doose syndrome, two with CDKL5 deficiency disorder, one with West syndrome, one with Rett Syndrome, one with Aicardi syndrome and one with undiagnosed refractory epilepsy.

### *Comorbid diagnosis*

Three of the participants presented with multiple comorbid diagnoses. The most reported being Infantile spasms (N=2), learning disabilities (N=1) and global developmental delay (N=1)

### *Medication*

Patients reported a mean of 7 ( $\pm$  4.58) anti-epileptic drugs prior to initiation of CBMPs which reduced to a mean of 1 ( $\pm$  1.23) per patient with 7 patients managing to completely wean off all AEDs. The most common secondary intervention in the cohort was a ketogenic diet (N=4) prior to initiation of CBMP which was not effective in any patient and was subsequently discontinued. One patient had a current vagal nerve stimulation implant.

Two patients using Epidyolex had failed to respond to this NICE recommended CBMP for treatment resistant epilepsy.



1  
2  
3  
4 One patient saw a significant worsening of symptoms including an increase in seizure  
5 frequency when switching from Bedrolite and Bedica products to other whole-plant CBMPs.  
6 The other three patients that changed CBMPs from Bedrolite and Bedica to other products  
7 noted burden of cost as the primary reason for switching product, though all these patients  
8 reported the efficacy of Bedrolite and Bedica in reducing seizure frequency.  
9

### 10 11 *Seizure frequency*

12 Figure 1 shows the findings from the ten participants enrolled in this case-series. Here we  
13 show individual and mean changes in seizure frequency pre and post initiation of CBMP  
14 (Note log 10 scale).  
15

16  
17 The monthly seizure frequency reduced for all 10 patients with an overall mean of 86%.  
18

19 \*Insert FIG 1\*

20  
21 Figure 1. Monthly seizure frequency pre and post CBMP in ten patients suffering with  
22 childhood-onset severe intractable epilepsies  
23  
24

### 25 *Dose of CBMP*

26 All patients were using whole-plant cannabis products which contain a range of terpenes,  
27 flavonoids and minor phytocannabinoids. We are currently in process of analysing the  
28 respective components of each medication in this study which we plan to report on. For this  
29 study we are only able to report on the respective doses of THC and CBD. For THC dosage,  
30 patients consumed a mean (SD) of 5.15(± 6.8) mg of THC a day and for CBD 171.8 (±  
31 153.3) mg of CBD daily.  
32  
33

### 34 *Correlational analysis of CBMP*

35 We correlated the THC: CBD dose ratio against the percent reduction in monthly seizure  
36 frequency to see if there were any effects of dosage on reported outcomes. Spearman's rho  
37 revealed a moderate correlation between THC:CBD ratio and changes in seizure frequency  
38 ( $r_s = 0.271$ ). The trend in the data indicated higher THC dose to be associated with greater  
39 reductions in seizure frequency.  
40  
41

### 42 *Cost*

43 The mean cost for participants medical cannabis prescription was £874 per month. One  
44 participant had obtained their medical cannabis prescription on the NHS.  
45  
46

### 47 *Other symptoms*

48 Parents and carers reported significant improvements in health and wellbeing of their  
49 children following initiation of whole-plant CBMPs. Particularly, these improvements were  
50 noted in sleep, eating, behaviour and cognition. We did not specifically ask for adverse  
51 effects here, but in Schlag et al's (2021) follow up qualitative study (comprising a subset of  
52 eleven of these patients across the current study and our previous one<sup>2,3</sup>) parents were asked  
53 about adverse effects specifically. Only few minor adverse effects, such as tiredness before  
54 exact dosing were reported. Our patient group almost universally reported highly improved  
55 cognitive and behavioural outcomes, likely due both to reduced seizure frequency and  
56 reduced use of other AEDs.  
57  
58  
59  
60

## Discussion

This study shows the effectiveness of whole-plant medical cannabis in a group of patients suffering with severe intractable childhood-onset epilepsies. The finding of a mean reduction of 86% in monthly seizure frequency in our (N=10) group demonstrates the feasibility for this medication in such patients.

Carers reported sustained and significant improvements in behavioural, psychological and cognitive faculties associated with medical cannabis use.

Our findings are in line with several observational and controlled interventional studies that have seen significant reductions in seizure frequency following treatment with medical cannabis. Moreover, our data suggest that whole-plant medical cannabis products are superior to isolated CBD products in the patients examined. To date, double-blind placebo controlled RCT evidence is only available for isolate CBD in three rare forms of epilepsy: Lennox Gastaut syndrome (LG), Dravet syndromes and Tuberous Sclerosis complex<sup>11, 12, 13, 14</sup>. One such study showed a reduction of 22.8% in seizures in children with Dravet syndrome<sup>11</sup> while another study by the same author in LG patients using CBD isolate reported a 42% reduction in drop seizures<sup>12</sup>. To expand on this Thiele et al (2018)<sup>13</sup> conducted a similar double-blind placebo controlled RCT in patients with LG and similarly reported a 44% decrease in drop seizure frequency in the CBD isolate group. A more recent interim analysis of a study by Thiele et al (2019)<sup>14</sup> sought to examine the effects of add-on CBD isolate to standardised treatment for seizures associated with Tuberous Sclerosis Complex, finding a 48% reduction in seizures versus 27% for placebo. From the RCT evidence alone it is clear that CBD isolate is a safe but not especially effective intervention for seizures in LG, Dravet and Tuberous Sclerosis Complex.

As noted by Rawlings<sup>8</sup> there are several limitations of RCTs in assessing evidence for novel medical interventions. For example, the strict inclusion and exclusion criteria of such studies limits the generalisability of findings. This is of particular importance in the case of paediatric-onset intractable epilepsies where the majority of epilepsies diagnosed under the age of 15 are of idiopathic origin<sup>15</sup>. Thus, observational retrospective studies such as ours allow for a wider participation and a broader patient pool to aid in understanding the scope of medical cannabis as an intervention. We acknowledge that retrospective observational research is subject to recall, and this is an inherent limitation of such designs. Given the rarity of such patient populations with these rare forms of epilepsy prospective studies would be very difficult to undertake.

Further, placebo-controlled designs fail to show clinicians the value of the intervention relative to standard AEDs or previous care. Moreover, observational studies allow physicians to understand the prescribing history of patients and reflect the effects of clinical decisions rather than RCT driven research interventions with stringent, mildly clinically translatable and often biasedly selected primary endpoints<sup>16</sup>.

There are also significant risk and ethical implications associated with randomising children suffering with epilepsy to placebo arms and delaying their treatment. One meta-analysis of placebo controlled randomised trials with AEDs reported a 7-fold increase in risk of sudden unexpected death in epilepsy (SUDEP) in those randomised to a placebo arm<sup>17</sup>.

Current NICE guidance, limiting prescribing for medical cannabis for this patient group to CBD in the form of Epidyolex, has relied on four RCTs in a limited range of diagnoses. Two



1  
2  
3 of the children in our sample had failed on Epidyolex. For this reason, NICE guidance has  
4 recently been updated to clarify that this should not deter clinicians from prescribing off-  
5 license medical cannabis products such as the whole-plant cannabis medicines of which our  
6 data support for such prescribing.  
7

### 8 9 Limitations

10 Further research is required to elucidate the mechanisms by which the respective additive  
11 constituents of whole-plant products lead to superior clinical results. Several encouraging  
12 pre-clinical lines of work highlight the anti-convulsive and neuroprotective roles of several  
13 minor phytocannabinoids including CBDV, D9-THCV and CBG<sup>18</sup>. THC exerts its  
14 anticonvulsant effects via activation of the CB1 receptor and subsequent modulation of  
15 glutamatergic excitatory activity in the brain<sup>19</sup>. Nonetheless, the investigation of the putative  
16 anti-convulsant effects of these cannabinoids needs to be investigated in-vivo to gain a full  
17 appreciation for their therapeutic efficacy. Whilst we note the difficulty in conducting  
18 prospective studies, these could be designed to identify children who are most likely to  
19 benefit from medical cannabis and those that are not in order to stratify treatment packages  
20 earlier during their disorders. Such a study would serve to ameliorate the current poor  
21 prognosis within this severely ill population.  
22  
23

24  
25 Mitigating risk is the cornerstone of clinical judgement and there are some opponents of the  
26 therapeutic use of THC in children and adolescence. Concern over the deleterious effects of  
27 whole-plant medical cannabis must be compared with the known iatrogenic effects of  
28 mainline AEDs. One randomised clinical trial of phenobarbital when used chronically for  
29 seizure prophylaxis found significant impairment of developmental trajectories<sup>20</sup> as well as a  
30 large decrease in global IQ and verbal learning<sup>21</sup>. In another double blind RCT valproate was  
31 associated with poorer attentional performance compared with other AEDs<sup>22</sup>.  
32  
33

34 Additionally, adverse effects from AEDs are the leading cause of treatment discontinuation  
35 and after seizure frequency, the major determinant of impaired health-related quality of life in  
36 people suffering with epilepsy.  
37  
38

39 Finally, in other medical indications, data obtained other than from RCTs can and does get  
40 used by medical regulators. A recent systematic review found that between 1999 and 2014  
41 over 76 unique marketing authorisations were granted without RCT results<sup>23</sup>. Very recently  
42 one such drug, Zolgensma<sup>24</sup> for the severe paediatric condition Spinal Muscular Atrophy  
43 gained approval on a single-arm open label design with 15 patients.  
44  
45

46 We believe that our data on whole-plant medical cannabis in childhood-onset severe  
47 treatment-resistant epilepsy, provides evidence to encourage its introduction into the NHS  
48 within current NICE prescribing guidelines. Such a move would be hugely beneficial to the  
49 families, who in addition to having the psychological distress of looking after their  
50 chronically ill children, have also to cover the crippling financial burden of their medication.  
51  
52

### 53 Data Sharing statement

54 All the Individual participant data will be available after de-identification and is presented in  
55 the table of the manuscript for access by researchers or interested parties.  
56  
57

### 58 Author's contributions

59  
60

RRZ, DJN and LDP analysed the data. AKS added sections of medical cannabis. All authors developed the initial manuscript and all authors reviewed and agreed to the final manuscript

## Conflicts of Interest

AKS is Head of Research for the charity Drug Science, which receives an unrestricted educational grant from a consortium of medical cannabis companies. RRZ, LDP and DJN declare no competing interests.

## Funding

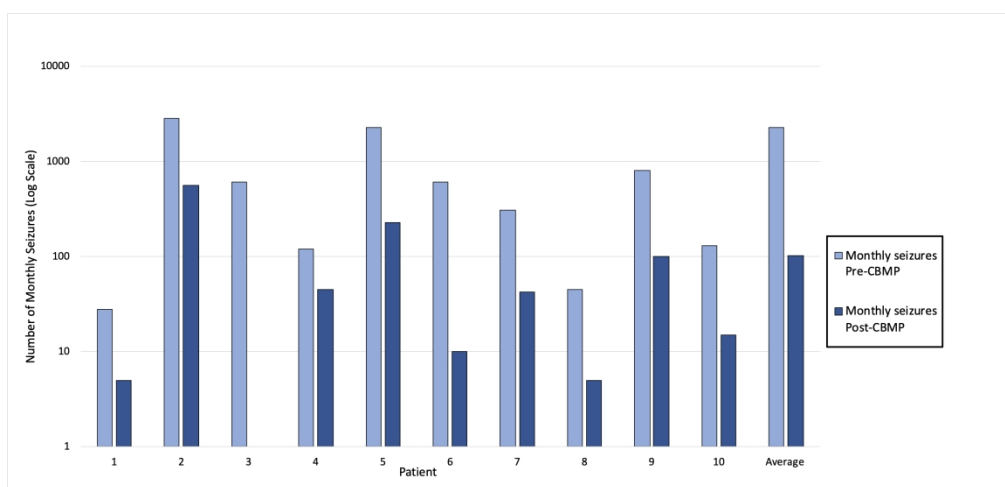
No funding was received for the writing of this article.

## References

1. O'Shaughnessy W. On the Preparations of the Indian Hemp, or Gunjah: Cannabis Indica Their Effects on the Animal System in Health, and their Utility in the Treatment of Tetanus and other Convulsive Diseases. *BMJ*. 1843;s1-5(123):363-369.
2. Schlag AK, O'Sullivan SE, Zafar RR, et al. (2021) Current controversies in medical cannabis: Recent developments in human clinical applications and potential therapeutics. *Neuropharmacology* 191: 108586.
3. Zafar R, Schlag A, Nutt D. Ending the pain of children with severe epilepsy? An audit of the impact of medical cannabis in 10 patients. *Drug Science, Policy and Law*. 2020;6:205032452097448.
4. Conservative Drug Policy Reform Group. UK Review of Medicinal Cannabis. 2020.
5. Nutt D. Why medical cannabis is still out of patients' reach—an essay by David Nutt. *BMJ*. 2019;:l1903.
6. Nutt D, Bazire S, Phillips L, Schlag A. So near yet so far: why won't the UK prescribe medical cannabis?. *BMJ Open*. 2020;10(9):e038687.
7. National Institute of Health and Care Excellence. Cannabis-based medicinal products NICE guideline [NG144]. London; 2021.
8. The Royal College of physicians: Sir Michael Rawlins attacks traditional ways of assessing evidence, opinion former article [Internet]. Politics. 2008 [cited 30 April 2021]. Available from: <https://www.politics.co.uk/opinion-formers/royal-college-of-physicians/article/royal-college-of-physicians-sirmichael-rawlins-attacks-trad>
9. National Institute of Health and Care Excellence. Widening the evidence base: use of broader data and applied analytics in NICE's work. London; 2020.
10. Byar D, Schoenfeld D, Green S, Amato D, Davis R, De Gruttola V et al. Design Considerations for AIDS Trials. *N Engl J Med*. 1990;323(19):1343-1348.
11. Devinsky O, Cross J, Laux L, Marsh E, Miller I, Nabbout R et al. Trial of Cannabidiol for Drug-Resistant Seizures in the Dravet Syndrome. *N Engl J Med*. 2017;376(21):2011-2020.
12. Devinsky O, Patel A, Cross J, Villanueva V, Wirrell E, Privitera M et al. Effect of Cannabidiol on Drop Seizures in the Lennox–Gastaut Syndrome. *N Engl J Med*. 2018;378(20):1888-1897.
13. Thiele E, Marsh E, French J, Mazurkiewicz-Beldzinska M, Benbadis S, Joshi C et al. Cannabidiol in patients with seizures associated with Lennox-Gastaut syndrome (GWPCARE4): a randomised, double-blind, placebo-controlled phase 3 trial. *Lancet*. 2018;391(10125):1085-1096.

14. Thiele E, Marsh E, Mazurkiewicz-Beldzinska M, Halford J, Gunning B, Devinsky O et al. Cannabidiol in patients with Lennox-Gastaut syndrome: Interim analysis of an open-label extension study. *Epilepsia*. 2019;60(3):419-428.
15. Dragoumi P, Tzetzis O, Vargiami E, Pavlou E, Krikonis K, Kontopoulos E et al. Clinical course and seizure outcome of idiopathic childhood epilepsy: determinants of early and long-term prognosis. *BMC Neurology*. 2013;13(1).
16. Shorvon S, Schmidt D. The right and the wrong with epilepsy and her science. *Epilepsia Open*. 2016;1(3-4):76-85.
17. Ryvlin P, Cucherat M, Rheims S. Risk of sudden unexpected death in epilepsy in patients given adjunctive antiepileptic treatment for refractory seizures: a meta-analysis of placebo-controlled randomised trials. *Lancet Neuro*. 2011;10(11):961-968.
18. Farrelly A, Vlachou S, Grintzalis K. Efficacy of Phytocannabinoids in Epilepsy Treatment: Novel Approaches and Recent Advances. *International Journal of Environmental Research and Public Health*. 2021;18(8):3993.
19. Monory K, Massa F, Egertová M, Eder M, Blaudzun H, Westenbroek R et al. The Endocannabinoid System Controls Key Epileptogenic Circuits in the Hippocampus. *Neuron*. 2006;51(4):455-466.
20. Farwell J, Lee Y, Hirtz D, Sulzbacher S, Ellenberg J, Nelson K. Phenobarbital for Febrile Seizures — Effects on Intelligence and on Seizure Recurrence. *N Engl J Med*. 1990;322(6):364-369.
21. Loring D, Meador K. Cognitive side effects of antiepileptic drugs in children. *Neurology*. 2004;62(6):872-877.
22. Glauser T, Cnaan A, Shinnar S, Hirtz D, Dlugos D, Masur D et al. Ethosuximide, Valproic Acid, and Lamotrigine in Childhood Absence Epilepsy. *N Engl J Med*. 2010;362(9):790-799.
23. Hatswell A, Baio G, Berlin J, Irs A, Freemantle N. Regulatory approval of pharmaceuticals without a randomised controlled study: analysis of EMA and FDA approvals 1999–2014. *BMJ Open*. 2016;6(6):e011666.
24. Mendell J, Al-Zaidy S, Shell R, Arnold W, Rodino-Klapac L, Prior T et al. Single-Dose Gene-Replacement Therapy for Spinal Muscular Atrophy. *N Engl J Med*. 2017;377(18):1713-1722.

1  
2  
3  
4  
5  
6  
7  
8  
9  
10  
11  
12  
13  
14  
15  
16  
17  
18  
19  
20  
21  
22  
23  
24  
25  
26  
27  
28  
29  
30  
31  
32  
33  
34  
35  
36  
37  
38  
39  
40  
41  
42  
43  
44  
45  
46  
47  
48  
49  
50  
51  
52  
53  
54  
55  
56  
57  
58  
59  
60



496x237mm (144 x 144 DPI)

# BMJ Paediatrics Open

## Medical cannabis for severe treatment resistant epilepsy in children – A case series of ten patients

Journal:	<i>BMJ Paediatrics Open</i>
Manuscript ID	bmjpo-2021-001234.R2
Article Type:	Original research
Date Submitted by the Author:	15-Oct-2021
Complete List of Authors:	Zafar, Rayyan; Imperial College London, Brain Sciences; DrugScience Schlag, Anne; Imperial College London, Department of Brain Sciences; DrugScience Phillips, Lawrence; The London School of Economics and Political Science; DrugScience Nutt, David; Imperial College London, Department of Brain Sciences; DrugScience
Keywords:	Neurology, Pharmacology

SCHOLARONE™  
Manuscripts



I, the Submitting Author has the right to grant and does grant on behalf of all authors of the Work (as defined in the below author licence), an exclusive licence and/or a non-exclusive licence for contributions from authors who are: i) UK Crown employees; ii) where BMJ has agreed a CC-BY licence shall apply, and/or iii) in accordance with the terms applicable for US Federal Government officers or employees acting as part of their official duties; on a worldwide, perpetual, irrevocable, royalty-free basis to BMJ Publishing Group Ltd ("BMJ") its licensees and where the relevant Journal is co-owned by BMJ to the co-owners of the Journal, to publish the Work in this journal and any other BMJ products and to exploit all rights, as set out in our [licence](#).

The Submitting Author accepts and understands that any supply made under these terms is made by BMJ to the Submitting Author unless you are acting as an employee on behalf of your employer or a postgraduate student of an affiliated institution which is paying any applicable article publishing charge ("APC") for Open Access articles. Where the Submitting Author wishes to make the Work available on an Open Access basis (and intends to pay the relevant APC), the terms of reuse of such Open Access shall be governed by a Creative Commons licence – details of these licences and which [Creative Commons](#) licence will apply to this Work are set out in our licence referred to above.

Other than as permitted in any relevant BMJ Author's Self Archiving Policies, I confirm this Work has not been accepted for publication elsewhere, is not being considered for publication elsewhere and does not duplicate material already published. I confirm all authors consent to publication of this Work and authorise the granting of this licence.

# Medical cannabis for severe treatment resistant epilepsy in children – A case series of ten patients

Rayyan Raja Zafar<sup>1,3</sup>, Anne Katrin Schlag<sup>1,3</sup>, Lawrence Phillips<sup>2,3</sup>,  
David Nutt<sup>1,3</sup>

<sup>1</sup> Centre for Neuropsychopharmacology and Psychedelic research, Department of Brain Sciences, Faculty of Medicine, Imperial College London, Hammersmith Hospital Campus, Du Cane Road London W12 0NN

<sup>2</sup> London School of Economics and Political Science, Houghton Street, London, WC2A 2AE

<sup>3</sup> Drug Science, London, UK

\*Corresponding author

Professor David Nutt DM FRCP FRCPsych FMedSci DLaws

Edmond J Safra Chair and Head

Centre for Neuropsychopharmacology and Psychedelic research

Department of Brain Sciences

Faculty of Medicine

Imperial College London

Hammersmith Hospital Campus

Du Cane Road

London W12 0NN

Tel: +44 (0)20 7594 6628/7047

Fax: +44 (0)20 7594 6548

d.nutt@imperial.ac.uk

Word count: 2521

## Abstract

### Objectives

To report the findings of a case series of ten children suffering with intractable epilepsies in the UK to determine the feasibility for using whole-plant cannabis medicines to treat seizures in children.

### Setting

This study was conducted retrospectively through collecting clinical data from caretakers and clinicians on study outcome variables. Participants were recruited through the MedCann Support and End our Pain charity groups which are patient representative groups that support children who are using medical cannabis to treat their epilepsies. Medicines were prescribed to patients by clinicians in both NHS and private medical practices. Follow up calls were conducted throughout the period January 2021 to May 2021 to keep data recorded up to date.

### Participants

Ten children, 18 years old or under, with intractable epilepsies were recruited from two charities. There were no limitations on diagnosis, sex or ethnic origin.

### Interventions

Participants were treated with a range of whole-plant medical cannabis oils. Individual dosing regimens were determined by clinicians.

### Primary outcome measure

The primary outcome measure was seizure frequency

### Results

Seizure frequency across all ten participants reduced by 86% with no significant adverse events. Participants reduced use of anti-epileptic drugs from an average of seven to one following treatment with medical cannabis. We also noted significant financial costs of £874 per month to obtain these medicines through private prescriptions.

### Conclusions

This study establishes the feasibility of whole-plant medical cannabis as an effective and well-tolerated medicine for reducing seizure frequency in children suffering with intractable epilepsies. These findings justify the potential value of further research into the reported therapeutic benefit of whole-plant medicinal cannabis products

### Key words

Epilepsy, Neurology, Paediatric neurology, Clinical Pharmacology, Medical Cannabis, Cannabis based medicinal products (CBMPs)



## Key Messages

What is known about the subject?

- Since the 1800s there has been significant anecdotal evidence of the value of medicinal cannabis in treating childhood epilepsies
- There have been 4 successful RCTs showing the therapeutic efficacy of cannabidiol (CBD) for the treatment of Lennox-Gastaut, Dravet's and Tuberous sclerosis syndrome
- There is limited scientific evidence available that has investigated whole-plant cannabis medicines containing THC in paediatric epilepsies.

What does this study add?

- The reduction of seizures demonstrates feasibility for this form of treatment in patients with paediatric intractable epilepsies
- The potential value of further research into the reported therapeutic benefit of whole-plant medicinal cannabis products

## Introduction

Though used for millennia in eastern medicine, the advent of medical cannabis as a therapeutic tool to treat seizures in the west was first noted in 1843 by an Irish physician, Dr O'Shaughnessy. He observed that cannabis tinctures resolved seizures in a febrile infant, thus claiming that medicine had found an anticonvulsant of the highest order<sup>1</sup>. In 1971 both recreational and medical cannabis were made illegal in the UK under the Misuse of Drugs Act 1971 and so cannabis research largely ceased. Led by parents whose children had responded well to whole-plant medical cannabis extracts but who had failed on conventional anti-epileptic drugs (AEDs) and purified cannabidiol (Epidiolex), medical cannabis was re-initiated as a medicine in the British pharmacopeia in 2018.

Cannabis-based medical products (CBMPs) comprise a broad range of medicines. They can be plant-based or synthetic and vary from purified single compounds (often THC or CBD) to complex mixtures of hundreds of molecules, in multiple formulations (oils, solutions, sublingual sprays, tablets and capsules), with multiple delivery mechanisms (oral, nasal, rectal, and inhalation)<sup>2</sup>.

Of the products licensed in the UK, Epidyolex (licensed for the treatment of epilepsy) is an isolate, Sativex (recommended for spasticity associated with Multiple Sclerosis) comprises a 1:1 CBD:THC isolate ratio, and Nabilone (e.g., used to treat nausea and vomiting due to cancer chemotherapy) is a THC analogue.

A combination of both THC and CBD from whole plant extracts were **superior** to CBD alone in children suffering from various forms of epilepsy<sup>3</sup>.

Despite the change in legal status of medical cannabis, most of these children have not benefited as to date there has been only 3 NHS CBMPs prescriptions made in total and only 2 in children<sup>4</sup>. Many patients are thus forced to resort to private treatment which costs up to £2000 per month<sup>3</sup>.

Reasons for this resistance are multifactorial<sup>5,6</sup>. One of the most argued by clinicians who might be prescribers is the lack of evidence for efficacy of medical cannabis. By this they

usually mean that there are no randomised controlled trials (RCTs) that prove efficacy and without these they are not prepared to prescribe. To a lesser extent this has also limited National Institute for Clinical and Healthcare Excellence (NICE) support<sup>7</sup>. It is generally accepted that RCTs though powerful are not the only means to generate evidence for the value of treatments. The previous head of NICE and the Medicines Healthcare Regulatory Agency (MHRA) Sir Michael Rawlins in his 2008 Royal College of Physicians Harveian lecture argued that there are many other ways of collecting useful clinical evidence highlighting:

‘Randomised controlled trials, long regarded at the ‘gold standard’ of evidence, have been put on an undeserved pedestal. Their appearance at the top of ‘hierarchies’ of evidence is inappropriate; and hierarchies, themselves, are illusory tools for assessing evidence. They should be replaced by a diversity of approaches that involve analysing the totality of the evidence-base’<sup>8</sup>.

In a recent position statement, NICE declared their willingness to acknowledge additional data sources including ‘real world’ data and ‘relevant data collected outside of the context of traditional trials’<sup>9</sup>. One of these other sources of data, real world evidence (RWE) comes from patient case series with before and after outcome measures. These are particularly useful for conditions where RCTs are unlikely or impossible to perform in examples of rare and idiopathic conditions and especially in paediatric medicine. For this reason, we have conducted an outcome assessment of the use of medical cannabis in 10 children with severe treatment-resistant epilepsy who have all failed on multiple traditional anti-epileptic drugs (AEDs) and many of whom have failed on the licensed cannabidiol (CBD) preparation Epidyolex. Epidyolex is a licensed, pharmaceutical grade, purified CBD medicinal product that is produced by GW Pharma. It is the first and only approved prescription CBD. It is approved to treat seizures associated with Lennox-Gastaut syndrome (LGS), Dravet syndrome or tuberous sclerosis complex (TSC) in patients 1 year of age and over.

Our previous study, an open label retrospective study of the impact of medical cannabis in ten patients found whole plant extracts to be superior to CBD isolate and a mean 80% reduction in seizure frequency in a range of intractable childhood epilepsies where standard treatment had failed<sup>3</sup>. A subsequent qualitative follow-up study highlighted the various benefits patients and their families experienced as a result of treatment with CBMPs<sup>2</sup>.

## Methods

### *Study design*

We recruited participants through two charities, MedCann Support and End Our Pain, which represent children who are using medical cannabis to treat their intractable epilepsies. At the time of the study there were a total of 40 participants across both charities that were using whole-plant medical cannabis products to treat their epilepsies. The study team liaised with these charities to disseminate the research proposal and participant information sheets to potential participants via the charities email database and social media pages. A total of 26 participants subsequently provided consent for involvement in the study and provided data on study outcome measures (see appendix). Ten of these have been previously reported<sup>3</sup>. Of the remaining 16 participants, only ten participants are involved in this current study. The attrition of six participants were due to missing data (n=5) and being over the age of 18

(n=1). Participants' data were collected from their parents or carers via telephone or video conference calls for the period January 2021 to May 2021.

### *Study outcomes*

The primary study outcome was to assess the percentage change in monthly seizure frequency in participants following initiation of medical cannabis. The secondary study outcomes were to assess the impact of medical cannabis on changes in AED use, to report the concentrations and doses of medical cannabis used by these patients and to document the costs incurred from attaining these prescriptions.

### *Patient and Public involvement*

Participants, parents, and clinicians helped to design the variables and information collected in the study. Working closely with patient groups will ensure the results are disseminated to relevant stakeholders, including patient representative groups and clinical governance bodies.

### *Participants*

We engaged carers of patients, following their consent to engage in the study, to provide information on patients age, diagnoses, current AED's, previous AEDs, previous CBMPs, current CBMPs, monthly seizure frequency pre and post initiation of CBMPs, dose of THC and CBD and cost of CBMPs. Data were confirmed with clinician reports where available.

### *Study medication*

All participants received whole plant extract CBMPs either through private prescription or through the NHS. The CBMPs used included Bedrolite (<1% THC and 9% CBD), Bedica (14% THC and <1% CBD), Celixir 20 (<1% THC and 20% CBD), Sweet pink CBD (<1% THC and 10.6% CBD), Althea 100 (<1% THC and 10% CBD). The prescription of these medicines was initiated by clinicians and all participants continued to use these medicines at the last follow up call. Individual dosing regimens are described in Table 1.

### *Statistical analysis*

Descriptive analysis on group percentage change in seizure outcome are provided. Other variables including mean AED use pre and post initiation of CBMP and mean cost are also described. No significance testing was performed due to no predefined terminal period for data collection.

### *Ethics approval*

The study was approved by Imperial College Research Ethics Committee (20IC5830 ICREC Committee (01/05/2020).

## Results

### *Clinical and demographic details*

A total of 10 patients were included in the current study. The mean age of participants was 6.2 years old (range 1-13). All clinical and demographic details can be viewed in table 1.

Table 1: Demographic and clinical data from 10 patients enrolled in the study

Patient	Age	Previous CBMP Medication	Current CBMP Medication	Daily Dose of CBMP Medication (ml)	Daily dose of THC (mg)	Daily dose of CBD (mgs)	Monthly seizures Pre CBMP	Monthly seizures Post CBMP	% Reduction in monthly seizure frequency	Monthly CBMP Cost

1	6	Epidioloex, Bedrolite, Bedica, Bedrocan, THC-A, Charlottes web	Sweet Pink CBD	2 ml	3.8	200	28	5	82	£1600
2	3	Charlottes Web / Hayleighs Hope / Bedrolite and Bedica	Celixir20	2.2ml	6	225	2,800	560	80	£500
3	7	Epidioloex	Bedrolite	1.4ml	4.2	140	600	0	100	£995.97
4	5	ND	Sweet Pink CBD	1.8ml	5.4	180	120	45	62.5	£200
5	4	ND	Bedrolite	1.2ml	3.6	120	2250	225	90	£1300
6	9	Charlottes webb, Hayleighs hope, over the counter CBD	Bedrolite + Bedrocan	3.6ml Bedrolite	14	360	600	10	98	0
7	13	Bedrolite	Celixir20 and Althea100	0.9 ml Celixir20, 0.2ml Althea100	2.9	110	305	42	86	£1389
8	9	Bedrolite and Bedica	Celixir20	0.75ml	2	75	45	5	89	£400
9	5	ND	Bedrolite	1.4ml	4.2	140	800	100	87.5	£730
10	1	Haleighs Hope	Bedrolite + Bedica	1.68ml Bedrolite, 0.1ml Bedica	5.4	168	130	15	88	£750

### *Epileptic Aetiologies*

The patients presented with a range of epileptic aetiologies including predefined syndromes, rare genetic disorders and undiagnosed epileptic encephalopathies. Two patients presented genetic aetiologies (PCDH19 mutation, chromosome deletion), one with Dravets syndrome, one with Doose syndrome, two with CDKL5 deficiency disorder, one with West syndrome, one with Rett Syndrome, one with Aicardi syndrome and one with undiagnosed refractory epilepsy.

### *Comorbid diagnosis*

Three of the participants presented with multiple comorbid diagnoses. The most reported being Infantile spasms (N=2), learning disabilities (N=1) and global developmental delay (N=1)

### *Medication*

Patients reported a mean of 7 ( $\pm$  4.58) anti-epileptic drugs prior to initiation of CBMPs which reduced to a mean of 1 ( $\pm$  1.23) per patient with 7 patients managing to completely wean off all AEDs. The most common secondary intervention in the cohort was a ketogenic diet (N=4) prior to initiation of CBMP which was not effective in any patient and was subsequently discontinued. One patient had a current vagal nerve stimulation implant.

Two patients using Epidyoloex had failed to respond to this NICE recommended CBMP for treatment resistant epilepsy.

One patient saw a significant worsening of symptoms including an increase in seizure frequency when switching from Bedrolite and Bedica products to other whole-plant CBMPs. The other three patients that changed CBMPs from Bedrolite and Bedica to other products

1  
2  
3 noted burden of cost as the primary reason for switching product, though all these patients  
4 reported the efficacy of Bedrolite and Bedica in reducing seizure frequency.  
5

### 6 *Seizure frequency*

7 Figure 1 shows the findings from the ten participants enrolled in this case-series. Here we  
8 show individual and mean changes in seizure frequency pre and post initiation of CBMP  
9 (Note log 10 scale).  
10

11  
12 The monthly seizure frequency reduced for all 10 patients with an overall mean of 86%.  
13

14 \*Insert FIG 1\*

15  
16  
17 Figure 1. Monthly seizure frequency pre and post CBMP in ten patients suffering with  
18 childhood-onset severe intractable epilepsies  
19

### 20 *Dose of CBMP*

21 All patients were using whole-plant cannabis products which contain a range of terpenes,  
22 flavonoids and minor phytocannabinoids. We are currently in process of analysing the  
23 respective components of each medication in this study which we plan to report on. For this  
24 study we are only able to report on the respective doses of THC and CBD. For THC dosage,  
25 patients consumed a mean (SD) of 5.15(± 6.8) mg of THC a day and for CBD 171.8 (±  
26 153.3) mg of CBD daily.  
27  
28

### 29 *Cost*

30 The mean cost for participants medical cannabis prescription was £874 per month. One  
31 participant had obtained their medical cannabis prescription on the NHS.  
32  
33

### 34 *Other symptoms*

35 Parents and carers reported significant improvements in health and wellbeing of their  
36 children following initiation of whole-plant CBMPs. Particularly, these improvements were  
37 noted in sleep, eating, behaviour and cognition. We did not specifically ask for adverse  
38 effects here, but in a follow up qualitative study (comprising a subset of eleven of these  
39 patients across the current study and our previous one<sup>2,3</sup>) parents were asked about adverse  
40 effects specifically. Only few minor adverse effects, such as tiredness before exact dosing  
41 were reported. Our patient group almost universally reported highly improved cognitive and  
42 behavioural outcomes, likely due both to reduced seizure frequency and reduced use of other  
43 AEDs.  
44  
45

## 46 **Discussion**

47 This study shows the effectiveness of whole-plant medical cannabis in a group of patients  
48 suffering with severe intractable childhood-onset epilepsies. The reduction in monthly  
49 seizure frequency in our group demonstrates the feasibility for this medication in such  
50 patients.  
51  
52

53  
54 Carers reported sustained and significant improvements in behavioural, psychological and  
55 cognitive faculties associated with medical cannabis use.  
56

57 Our findings are in line with several observational and controlled interventional studies that  
58 have seen significant reductions in seizure frequency following treatment with medical  
59 cannabis. Moreover, our data suggest that whole-plant medical cannabis products are superior  
60



1  
2  
3 to isolated CBD products in the patients examined. To date, double-blind placebo controlled  
4 RCT evidence is only available for isolate CBD in three rare forms of epilepsy: Lennox  
5 Gastaut syndrome (LG), Dravet syndromes and Tuberous Sclerosis complex<sup>10, 11, 12, 13</sup>. One  
6 such study showed a reduction of 22.8% in seizures in children with Dravet syndrome<sup>10</sup> while  
7 another study by the same author in LG patients using CBD isolate reported a 42% reduction  
8 in drop seizures<sup>11</sup>. To expand on this another study<sup>12</sup> conducted a similar double-blind  
9 placebo controlled RCT in patients with LG and similarly reported a 44% decrease in drop  
10 seizure frequency in the CBD isolate group. A more recent interim analysis of another study<sup>13</sup>  
11 sought to examine the effects of add-on CBD isolate to standardised treatment for seizures  
12 associated with Tuberous Sclerosis Complex, finding a 48% reduction in seizures versus 27%  
13 for placebo. From the RCT evidence alone it is clear that CBD isolate is a safe but not  
14 especially effective intervention for seizures in LG, Dravet and Tuberous Sclerosis Complex.  
15  
16  
17

18 As noted by Rawlings<sup>8</sup> there are several limitations of RCTs in assessing evidence for novel  
19 medical interventions. For example, the strict inclusion and exclusion criteria of such studies  
20 limits the generalisability of findings. This is of particular importance in the case of  
21 paediatric-onset intractable epilepsies where the majority of epilepsies diagnosed under the  
22 age of 15 are of idiopathic origin<sup>14</sup>. Thus, observational studies allow for a wider  
23 participation and a broader patient pool to aid in understanding the scope of medical cannabis  
24 as an intervention. We acknowledge that retrospective observational research is subject to  
25 recall, and this is an inherent limitation of such designs. Given the rarity of such patient  
26 populations with these forms of epilepsy prospective studies would be challenging and take a  
27 long time to complete.  
28  
29  
30

31 Current NICE guidance, limiting prescribing for medical cannabis for this patient group to  
32 CBD in the form of Epidyolex, has relied on four RCTs in a limited range of diagnoses. Two  
33 of the children in our sample had failed on Epidyolex. For this reason, NICE guidance has  
34 recently been updated to clarify that this should not deter clinicians from prescribing off-  
35 license medical cannabis products such as the whole-plant cannabis medicines of which our  
36 data support for such prescribing.  
37  
38

### 39 Limitations

40 Our data has number of limitations. First, the data collection was retrospective based on  
41 parental recall (though these often-contained seizure diaries). Second, there was no  
42 randomisation or placebo and so there was no comparator or placebo group. Thirdly, there  
43 may be bias in that the parents that agreed to provide the data were the ones in which the  
44 children had had the largest clinical impact from their medical cannabis. Fourthly there was  
45 no assessment of the impact of removing the intervention to validate the enduring need for  
46 treatment. Finally, the patient number was small, but it did accord with previously reported  
47 outcomes in a previous study<sup>3</sup>.  
48  
49

50 Further research is required to elucidate the mechanisms by which the respective additive  
51 constituents of whole-plant products lead to superior clinical results. Several encouraging  
52 pre-clinical lines of work highlight the anti-convulsive and neuroprotective roles of several  
53 minor phytocannabinoids including CBDV, D9-THCV and CBG<sup>15</sup>. THC exerts its  
54 anticonvulsant effects via activation of the CB1 receptor and subsequent modulation of  
55 glutamatergic excitatory activity in the brain<sup>16</sup>. Nonetheless, the investigation of the putative  
56 anti-convulsant effects of these cannabinoids needs to be investigated in-vivo to gain a full  
57 appreciation for their therapeutic efficacy. Whilst we note the difficulty in conducting  
58 prospective studies, these could be designed to identify children who are most likely to  
59  
60

benefit from medical cannabis and those that are not in order to stratify treatment packages earlier during their disorders. Such a study would serve to ameliorate the current poor prognosis within this severely ill population.

Mitigating risk is the cornerstone of clinical judgement and there are some opponents of the therapeutic use of THC in children and adolescence. Concern over the deleterious effects of whole-plant medical cannabis must be compared with the known iatrogenic effects of mainline AEDs. One randomised clinical trial of phenobarbital when used chronically for seizure prophylaxis found significant impairment of developmental trajectories<sup>17</sup> as well as a large decrease in global IQ and verbal learning<sup>18</sup>. In another double blind RCT valproate was associated with poorer attentional performance compared with other AEDs<sup>19</sup>.

Additionally, adverse effects from AEDs are the leading cause of treatment discontinuation and after seizure frequency, the major determinant of impaired health-related quality of life in people suffering with epilepsy. Adverse events are commonly reported with AEDs with one such study reporting 1139 adverse drug reactions in 124 young people using antiepileptic drugs<sup>20</sup> while another study reported that behavioural problems and somnolence were the most common adverse drug reactions and that AED polytherapy significantly increase the likelihood of children developing such reactions<sup>21</sup>.

We believe that our data on whole-plant medical cannabis in childhood-onset severe treatment-resistant epilepsy, provides evidence to support its introduction into the NHS within current NICE prescribing guidelines. Such a move would be hugely beneficial to the families, who in addition to having the psychological distress of looking after their chronically ill children, have also to cover the crippling financial burden of their medication.

## Data Sharing statement

All the Individual participant data will be available after de-identification and is presented in the table of the manuscript for access by researchers or interested parties.

## Author's contributions

RRZ, DJN and LDP analysed the data. AKS added sections of medical cannabis. All authors developed the initial manuscript and all authors reviewed and agreed to the final manuscript

## Conflicts of Interest

AKS is Head of Research for the charity Drug Science, which receives an unrestricted educational grant from a consortium of medical cannabis companies. RRZ, LDP and DJN declare no competing interests.

## Funding

No funding was received for the writing of this article.

## References

1. O'Shaughnessy W. On the Preparations of the Indian Hemp, or Gunjah: Cannabis Indica Their Effects on the Animal System in Health, and their Utility in the Treatment of Tetanus and other Convulsive Diseases. *BMJ*. 1843;s1-5(123):363-369.

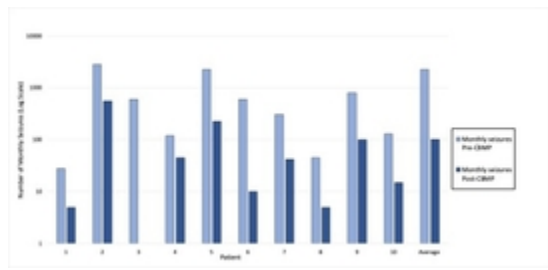
2. Schlag AK, O'Sullivan SE, Zafar RR, et al. (2021) Current controversies in medical cannabis: Recent developments in human clinical applications and potential therapeutics. *Neuropharmacology* 191: 108586.
3. Zafar R, Schlag A, Nutt D. Ending the pain of children with severe epilepsy? An audit of the impact of medical cannabis in 10 patients. *Drug Science, Policy and Law*. 2020;6:205032452097448.
4. Conservative Drug Policy Reform Group. UK Review of Medicinal Cannabis. 2020.
5. Nutt D. Why medical cannabis is still out of patients' reach—an essay by David Nutt. *BMJ*. 2019;:l1903.
6. Nutt D, Bazire S, Phillips L, Schlag A. So near yet so far: why won't the UK prescribe medical cannabis?. *BMJ Open*. 2020;10(9):e038687.
7. National Institute of Health and Care Excellence. Cannabis-based medicinal products NICE guideline [NG144]. London; 2021.
8. The Royal College of physicians: Sir Michael Rawlins attacks traditional ways of assessing evidence, opinion former article [Internet]. Politics. 2008 [cited 30 April 2021]. Available from: <https://www.politics.co.uk/opinion-formers/royal-college-of-physicians/article/royal-college-of-physicians-sirmichael-rawlins-attacks-trad>
9. National Institute of Health and Care Excellence. Widening the evidence base: use of broader data and applied analytics in NICE's work. London; 2020.
10. Devinsky O, Cross J, Laux L, Marsh E, Miller I, Nabbout R et al. Trial of Cannabidiol for Drug-Resistant Seizures in the Dravet Syndrome. *N Engl J Med*. 2017;376(21):2011-2020.
11. Devinsky O, Patel A, Cross J, Villanueva V, Wirrell E, Privitera M et al. Effect of Cannabidiol on Drop Seizures in the Lennox–Gastaut Syndrome. *N Engl J Med*. 2018;378(20):1888-1897.
12. Thiele E, Marsh E, French J, Mazurkiewicz-Beldzinska M, Benbadis S, Joshi C et al. Cannabidiol in patients with seizures associated with Lennox-Gastaut syndrome (GWPCARE4): a randomised, double-blind, placebo-controlled phase 3 trial. *Lancet*. 2018;391(10125):1085-1096.
13. Thiele E, Marsh E, Mazurkiewicz-Beldzinska M, Halford J, Gunning B, Devinsky O et al. Cannabidiol in patients with Lennox-Gastaut syndrome: Interim analysis of an open-label extension study. *Epilepsia*. 2019;60(3):419-428.
14. Dragoumi P, Tzetzzi O, Vargiami E, Pavlou E, Krikonis K, Kontopoulos E et al. Clinical course and seizure outcome of idiopathic childhood epilepsy: determinants of early and long-term prognosis. *BMC Neurology*. 2013;13(1).
15. Farrelly A, Vlachou S, Grintzalis K. Efficacy of Phytocannabinoids in Epilepsy Treatment: Novel Approaches and Recent Advances. *International Journal of Environmental Research and Public Health*. 2021;18(8):3993.
16. Monory K, Massa F, Egertová M, Eder M, Blaudzun H, Westenbroek R et al. The Endocannabinoid System Controls Key Epileptogenic Circuits in the Hippocampus. *Neuron*. 2006;51(4):455-466.
17. Farwell J, Lee Y, Hirtz D, Sulzbacher S, Ellenberg J, Nelson K. Phenobarbital for Febrile Seizures — Effects on Intelligence and on Seizure Recurrence. *N Engl J Med*. 1990;322(6):364-369. (DELETE and update)



- 1  
2  
3  
4  
5  
6  
7  
8  
9  
10  
11  
12  
13  
14  
15  
16  
17  
18  
19  
20  
21  
22  
23  
24  
25  
26  
27  
28  
29  
30  
31  
32  
33  
34  
35  
36  
37  
38  
39  
40  
41  
42  
43  
44  
45  
46  
47  
48  
49  
50  
51  
52  
53  
54  
55  
56  
57  
58  
59  
60
18. Loring D, Meador K. Cognitive side effects of antiepileptic drugs in children. *Neurology*. 2004;62(6):872-877. (update his paper)
  19. Glauser T, Cnaan A, Shinnar S, Hirtz D, Dlugos D, Masur D et al. Ethosuximide, Valproic Acid, and Lamotrigine in Childhood Absence Epilepsy. *N Engl J Med*. 2010;362(9):790-799.
  20. Egunsola O, Choonara I, Sammons HM, Whitehouse WP. Safety of antiepileptic drugs in children and young people: a prospective cohort study. *British Epilepsy Associate* 2018. doi.org/10.1016/j.seizure.2018.01.018.
  21. Anderson M, Egunsola O, Cherrill J, Millward C, Fakis A, Choonara I. A prospective study of adverse drug reactions in antiepileptic drugs in children. *BMJ Open* 2015; 5: e008298.

Confidential: For Review Only

1  
2  
3  
4  
5  
6  
7  
8  
9  
10  
11  
12  
13  
14  
15  
16  
17  
18  
19  
20  
21  
22  
23  
24  
25  
26  
27  
28  
29  
30  
31  
32  
33  
34  
35  
36  
37  
38  
39  
40  
41  
42  
43  
44  
45  
46  
47  
48  
49  
50  
51  
52  
53  
54  
55  
56  
57  
58  
59  
60



22x11mm (300 x 300 DPI)

## Appendix A. Interview topic guide

Remind interviewees that this interview is about telling their story, that there are not right or wrong answers, and that they can withdraw from the interview at any time should they wish to or decline to answer a question at any time.

- Can you give us some background to your child's medical cannabis use?
- Can you provide us detail on the following: Age, Diagnosis, Frequency of medical cannabis use, dose of medical cannabis use, company and product of medical cannabis use?
- Can you provide us detail on seizure frequency before medical cannabis use and tell us about the effects of medical cannabis on seizure frequency?
- Could you tell us about your child's previous and current use of anti-epileptic drugs
- Present- what are you are doing now?
  
- What (if anything) has changed since using medical cannabis?
  
- What do you like most about the medical cannabis treatment you are receiving?
  
- What do you dislike most about the medical cannabis treatment you are receiving?
  
- Can you sum up your thoughts and feelings about the treatment?
  
- How do previous drugs compare to medical cannabis and/or medical cannabis and other drugs?
  
- Can you describe the patient's quality of life before and after medical cannabis treatment?
  
- Can you describe your/your family's quality of life before and after medical cannabis treatment?
  
- What do your friends and family think about your choice of treatment?
  
- Future- how do you see your child's future? What are your hopes in terms of medical cannabis treatment?
  
- What are your worries related to medical cannabis treatment?
  
- What (if anything) would you like to change about the current approach, e.g. in terms of the medications, regulations, costs, access, etc.?
  
- Do you feel well provided by your doctor? Does your doctor understand your child's needs in relation to medical cannabis?
  
- Where would you like to have/have had (more) help and support? From whom?
  
- What (if anything) has been the impact of COVID-19 on your situation?
  
- Is there anything you would like to add?

Thank you!