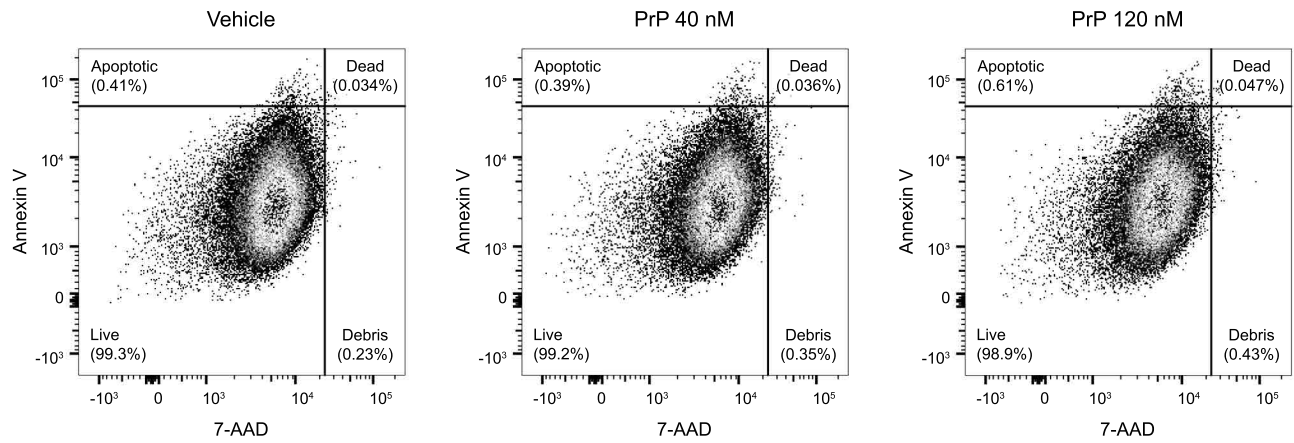
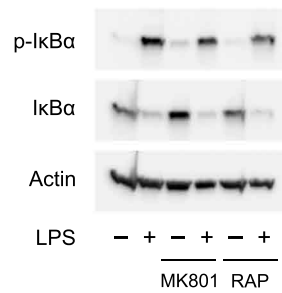


Supplemental Figure S1



Supplemental Figure S1. S-PrP does not affect BMDM viability. BMDMs were treated with S-PrP (40 - 120 nM) or vehicle for 6 h. Representative flow cytometry analyses to detect apoptotic cells are shown. Apoptotic BMDMs were detected as cells that capture high levels of cell-surface Annexin V (y-axis, top of graph). 7-AAD uptake is shown on the x-axis. 7-AAD exclusion is a property of viable cells and also may be used to distinguish early apoptotic cells from late apoptotic or dead cells.

Supplemental Figure S2



Supplemental Figure S2. MK801 and DXM do not affect the ability of LPS to induce IκBα phosphorylation in the absence of S-PrP. BMDMs were pre-treated with MK801 (1.0 μM), DXM (10 μM), or vehicle for 30 min, and then with LPS (0.1 μg/mL) for 1 h, as indicated. Immunoblot analysis was performed to detect phospho-IκBα, total IκBα, and β-actin.