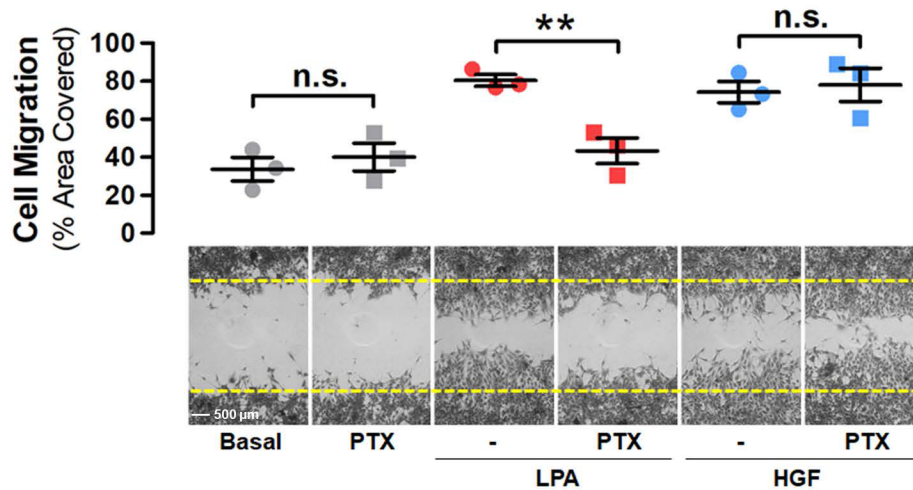


Supplementary Figure 1.

A) Expression of LPA receptors (RNAseq) in NSCLC TCGA datasets analyzed at the cBioPortal platform. Graph represents mean±SEM; ** p<0.05, **** p<0.0001.

B) Maximally separated Kaplan-Meier plots represent overall survival of stage II-IV NSCLC patients with high and low ENPP2 expression.

C) ENPP2:ARHGEF17 expression in stage II-IV NSCLC TCGA patients. Coexpression was analyzed at the cBioPortal platform.



Supplementary Figure 2.

LPA-induced LAP0297 cell migration was inhibited with persussis toxin (PTX), but HGF-induced migration was not. Before wound closure assays, cells were preincubated overnight with 100ng/mL PTX. Cell migration was stimulated with 5μM LPA or 10ng/mL HGF. Data represent 3 independent experiments, t-test.