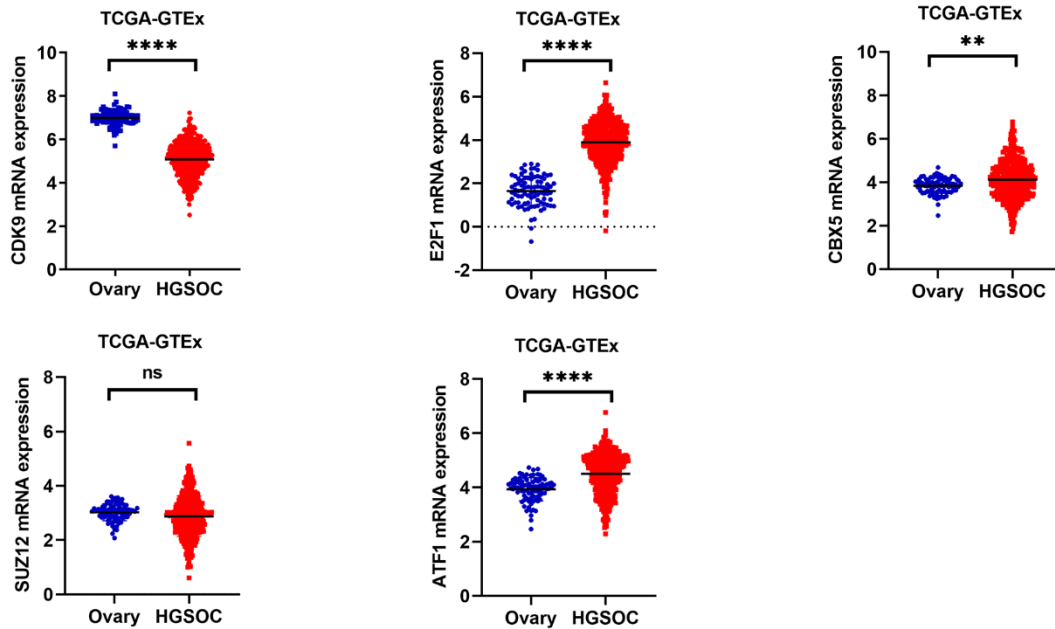
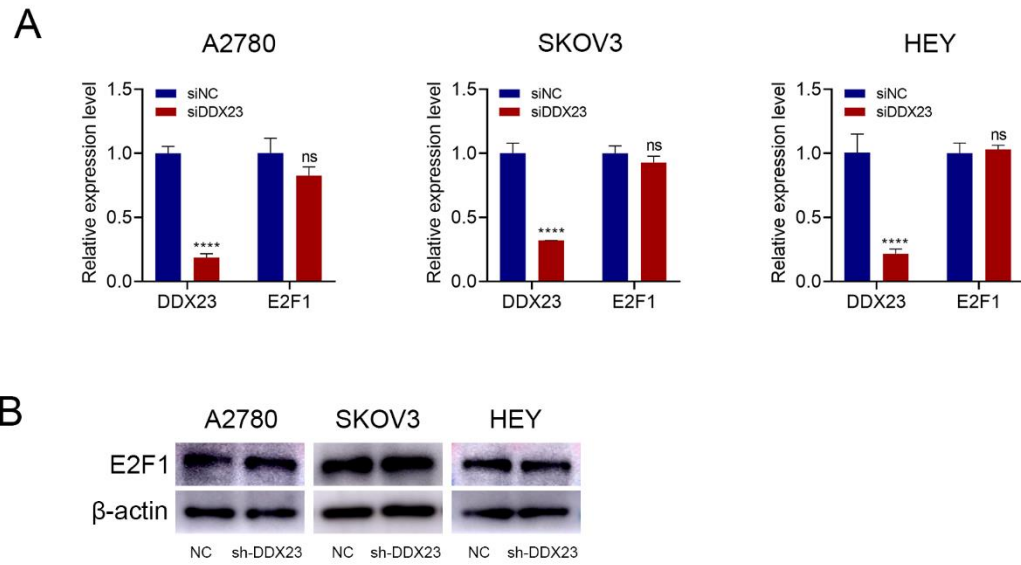


Supplementary Material



Supplementary Figure S1 | Relative mRNA expression of CDK9, E2F1, CBX5, SUZ12, and ATF1 in HGSOC and normal ovarian tissues using data from TCGA-GTEX. ns, no significant, $**P < 0.01$, $****P < 0.0001$.



Supplementary Figure S2 | (A,B) The mRNA and protein levels of E2F1 in ovarian cancer cells with or without DDX23 knockdown were measured by qRT-PCR (A) and Western blotting (B). ns, no significant, **** $P < 0.0001$.