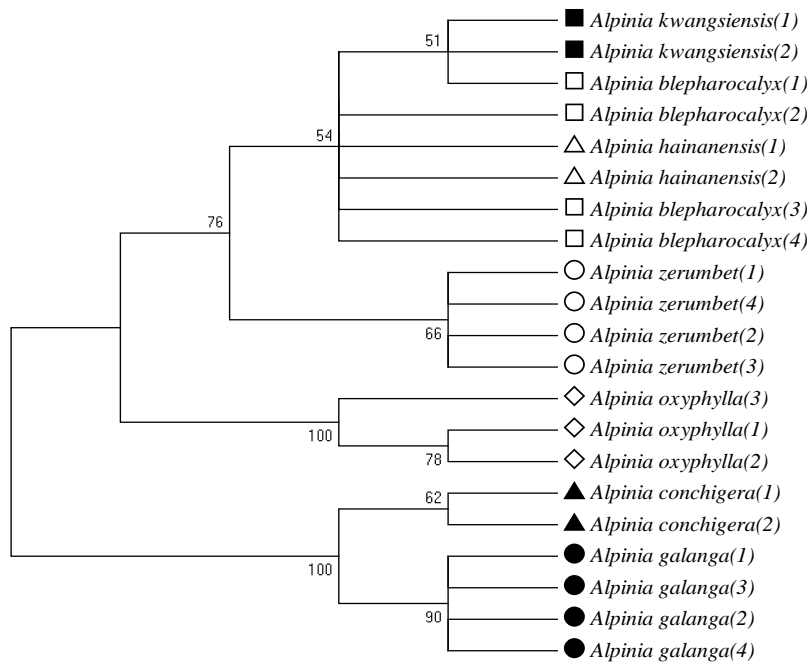
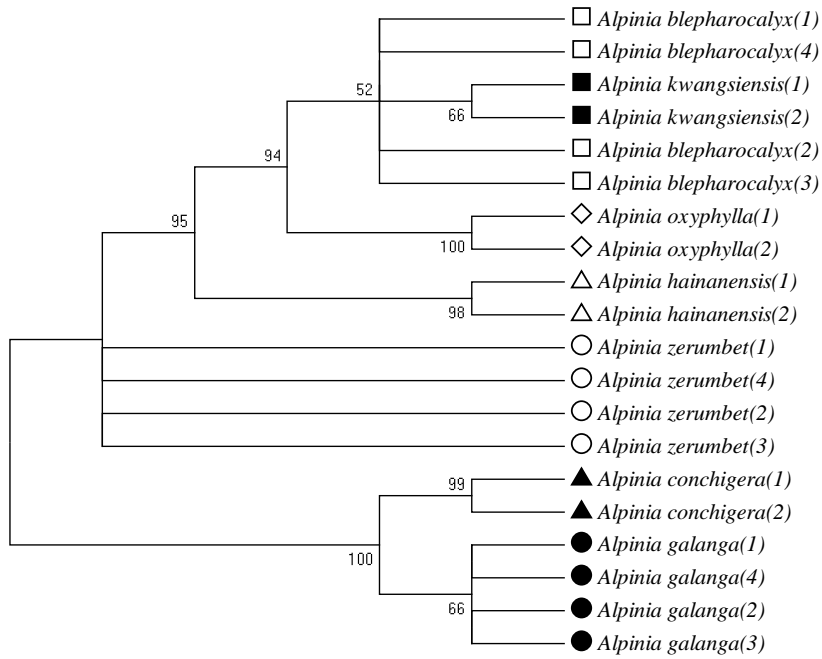


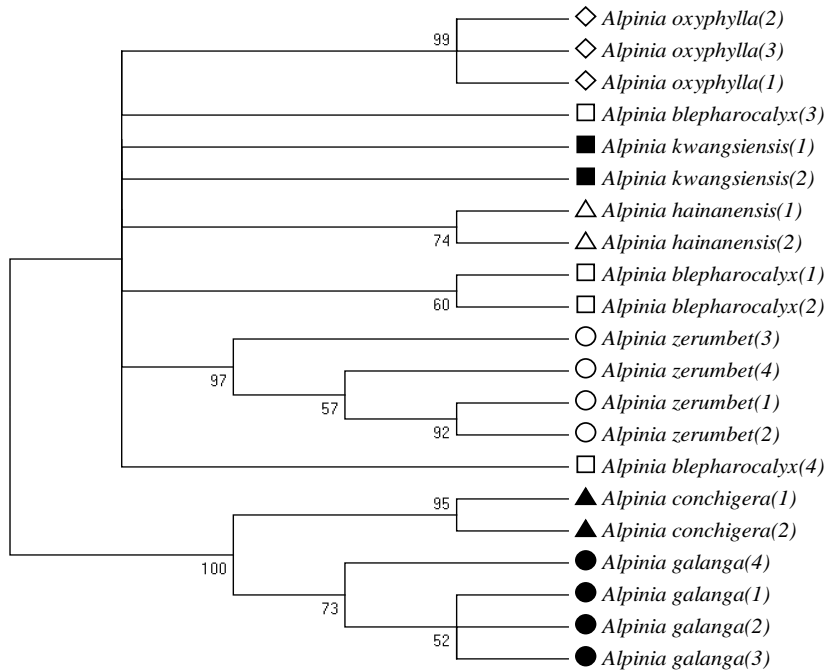
NJ phylogenetic tree of seven *Alpinia* species based on the concatenated sequences of *ndhC-trnV*.



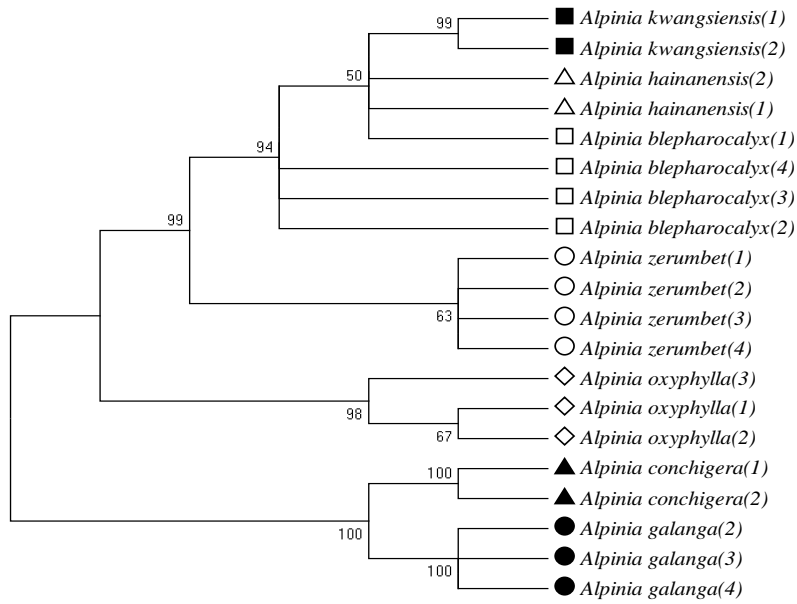
NJ phylogenetic tree of seven *Alpinia* species based on the concatenated sequences of *psaC-ndhE*.



NJ phylogenetic tree of seven *Alpinia* species based on the concatenated sequences of *rpl32-trnL*.



NJ phylogenetic tree of seven *Alpinia* species based on the concatenated sequences of *trnC-petN*.



NJ phylogenetic tree of seven *Alpinia* species based on the concatenated sequences of *trnS-trnG*.

Supplementary Figure 1 Phylogenetic tree constructed using neighbor-joining based on the 5 Barcode Markers of seven *Alpinia* species. Numbers above the branches are the bootstrap support values.