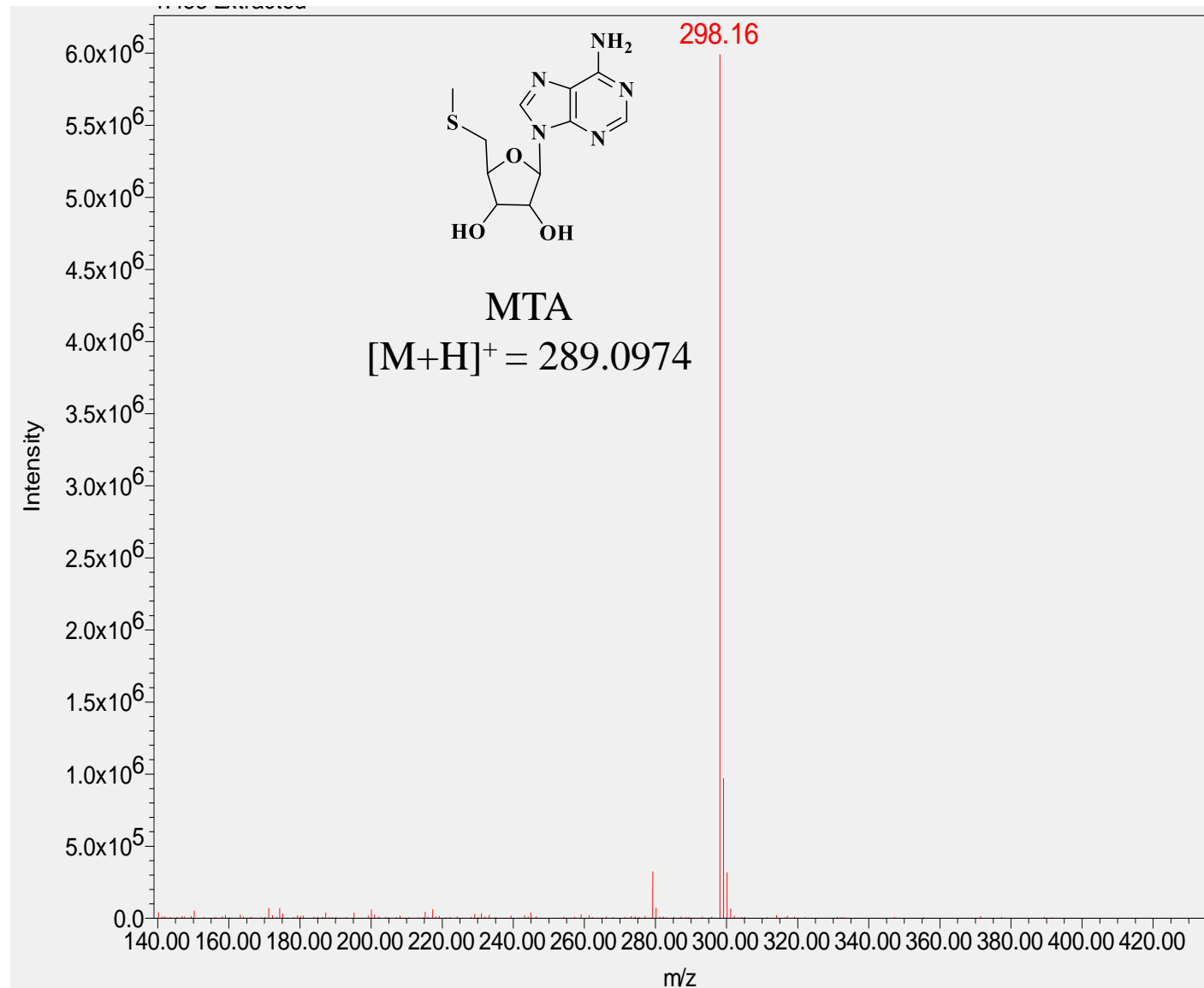
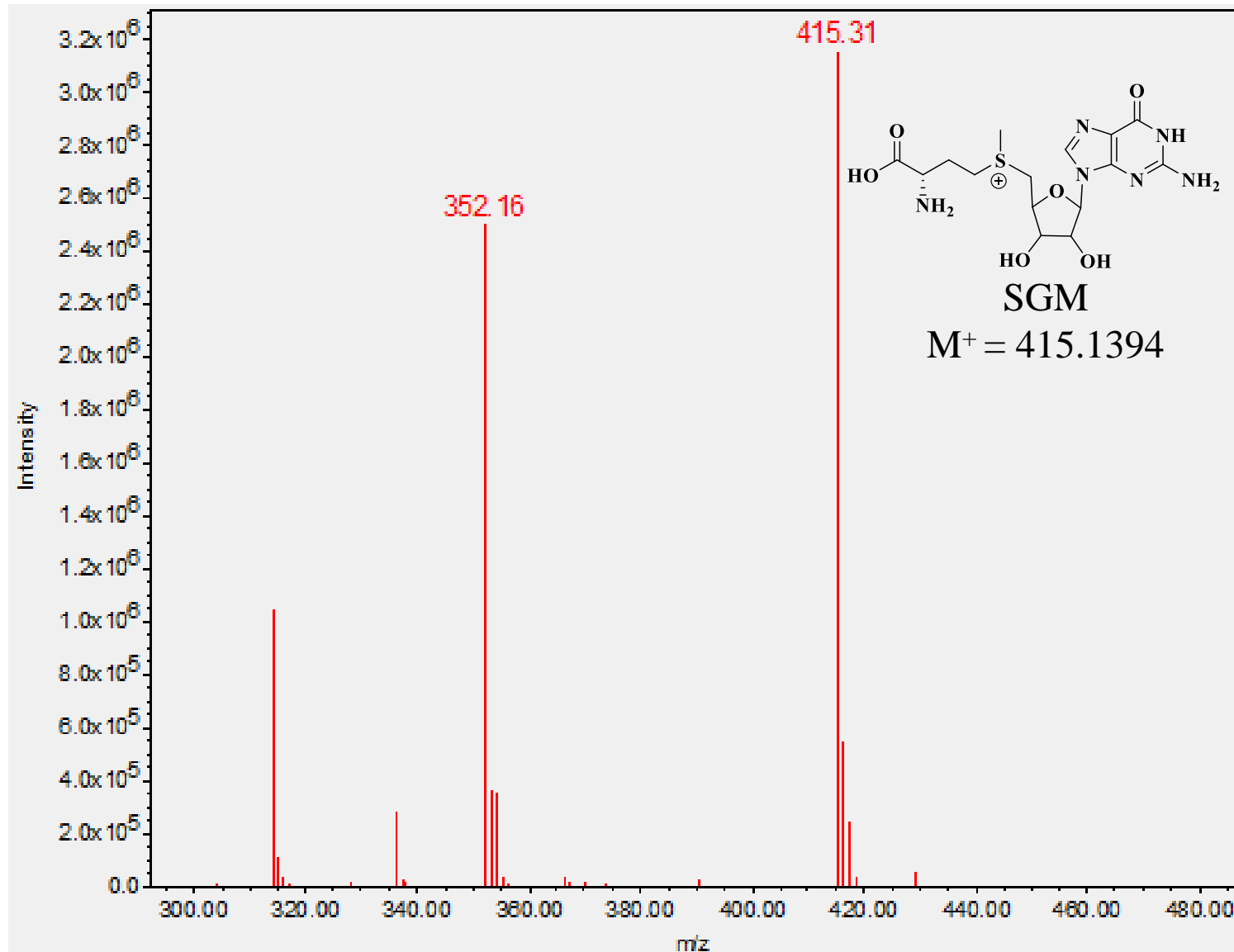


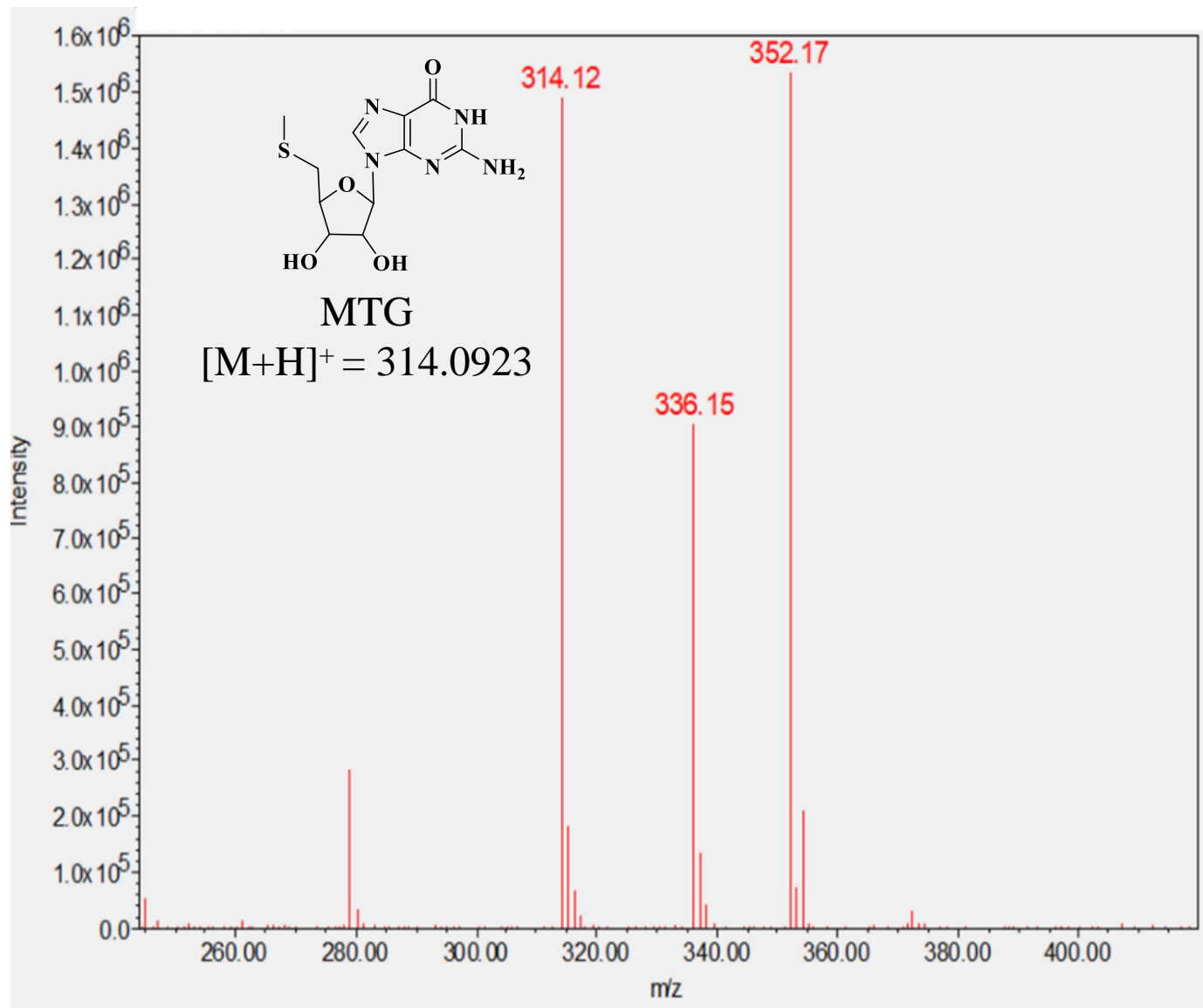
Mass spectrum of SAM using Acquity UPLC H-Class System with Acquity QDa Detector. Mass of SAM extracted at retention time 4.1 min, showing expected 399.31 mass.



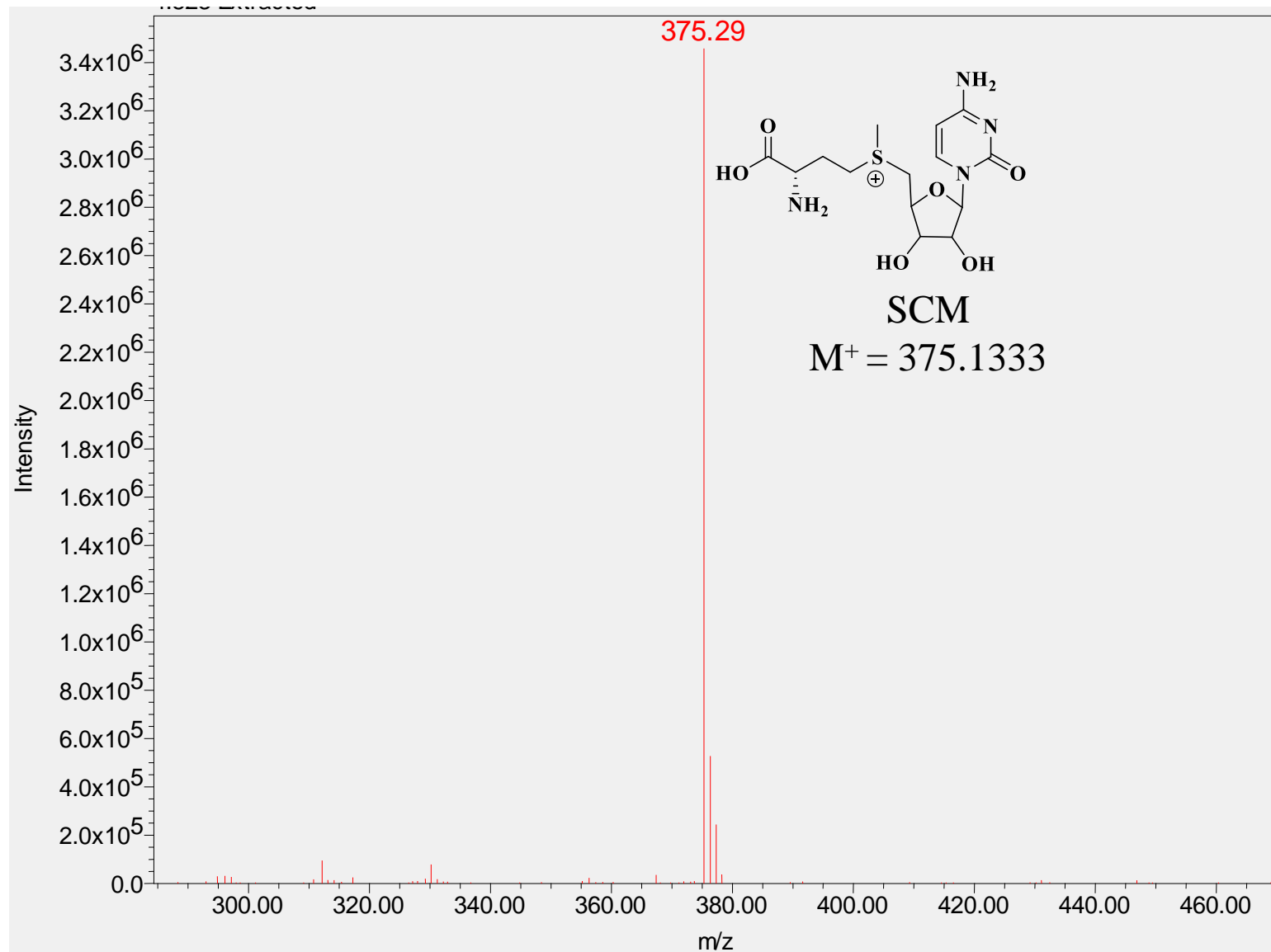
Mass spectrum of MTA using Acquity UPLC H-Class System with Acquity QDa Detector. Mass of MTA extracted at retention time 1.3 min, showing expected mass 298.16 [M+H]⁺.



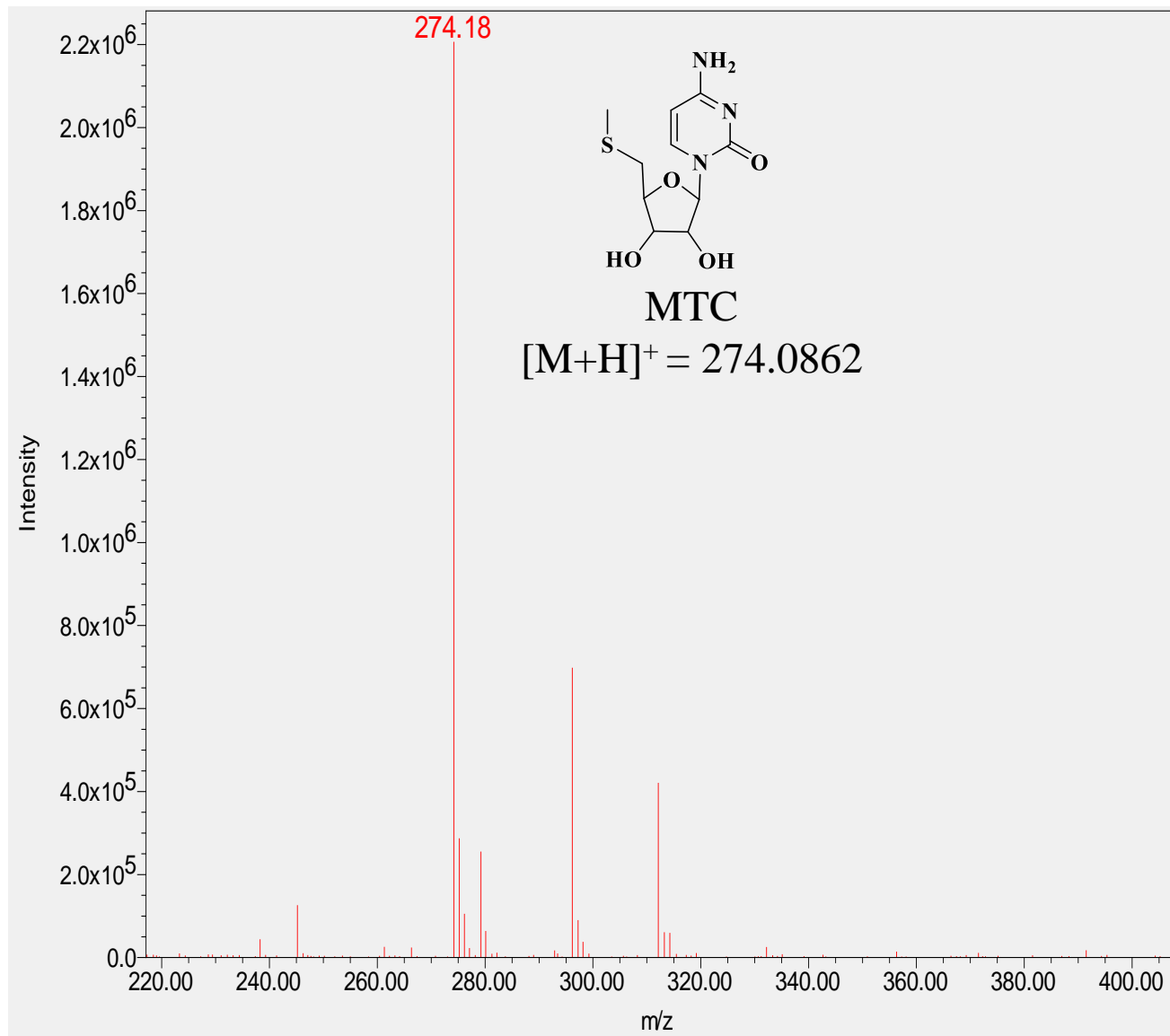
Mass spectrum of SGM using Acquity UPLC H-Class System with Acquity QDa Detector. Mass of SGM extracted at retention time 5.3 min, showing expected mass 415.31.



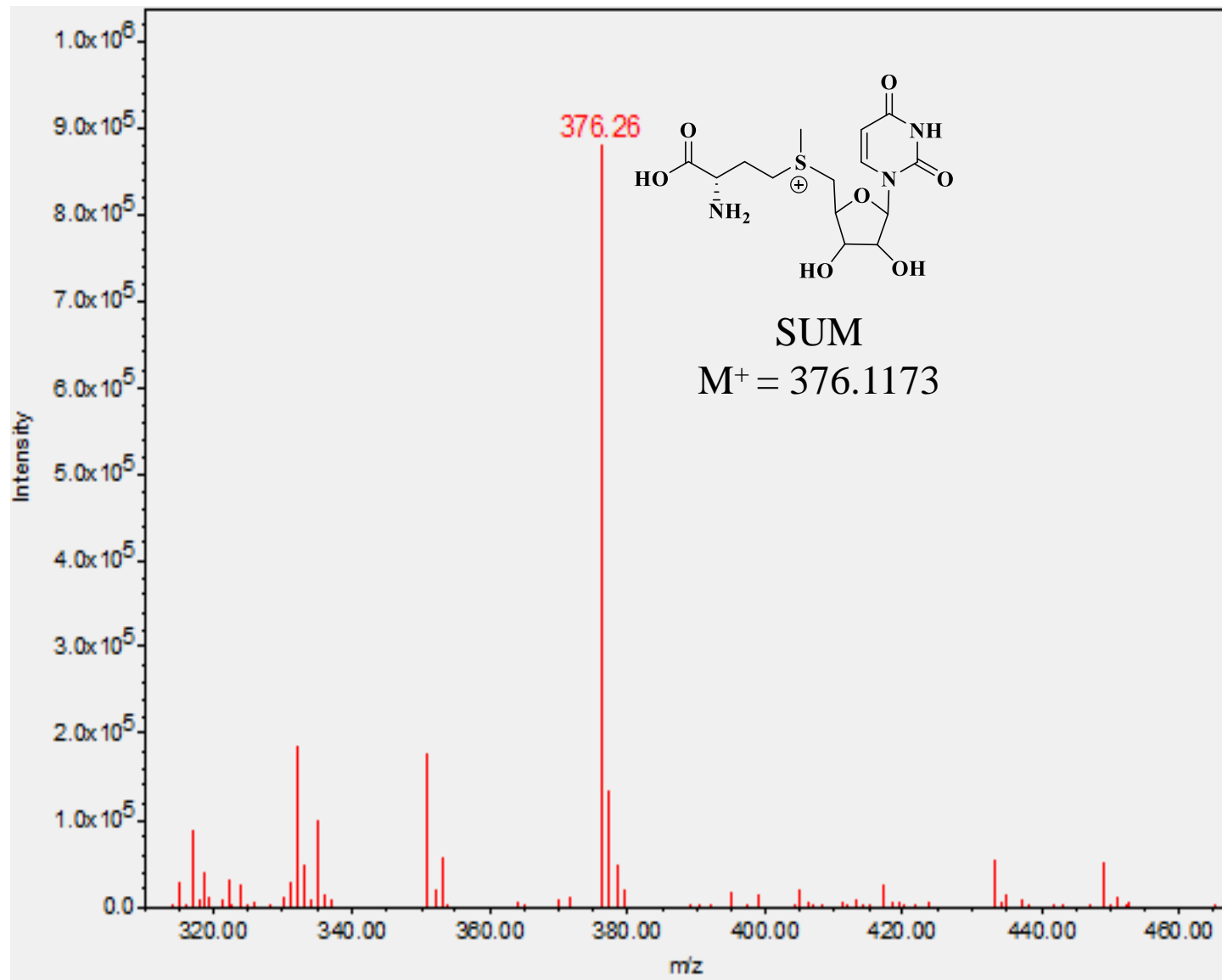
Mass spectrum of MTG using Acquity UPLC H-Class System with Acquity QDa Detector. Mass of MTG extracted at retention time 1.5 min, showing expected mass 314.12 [M+H]⁺.



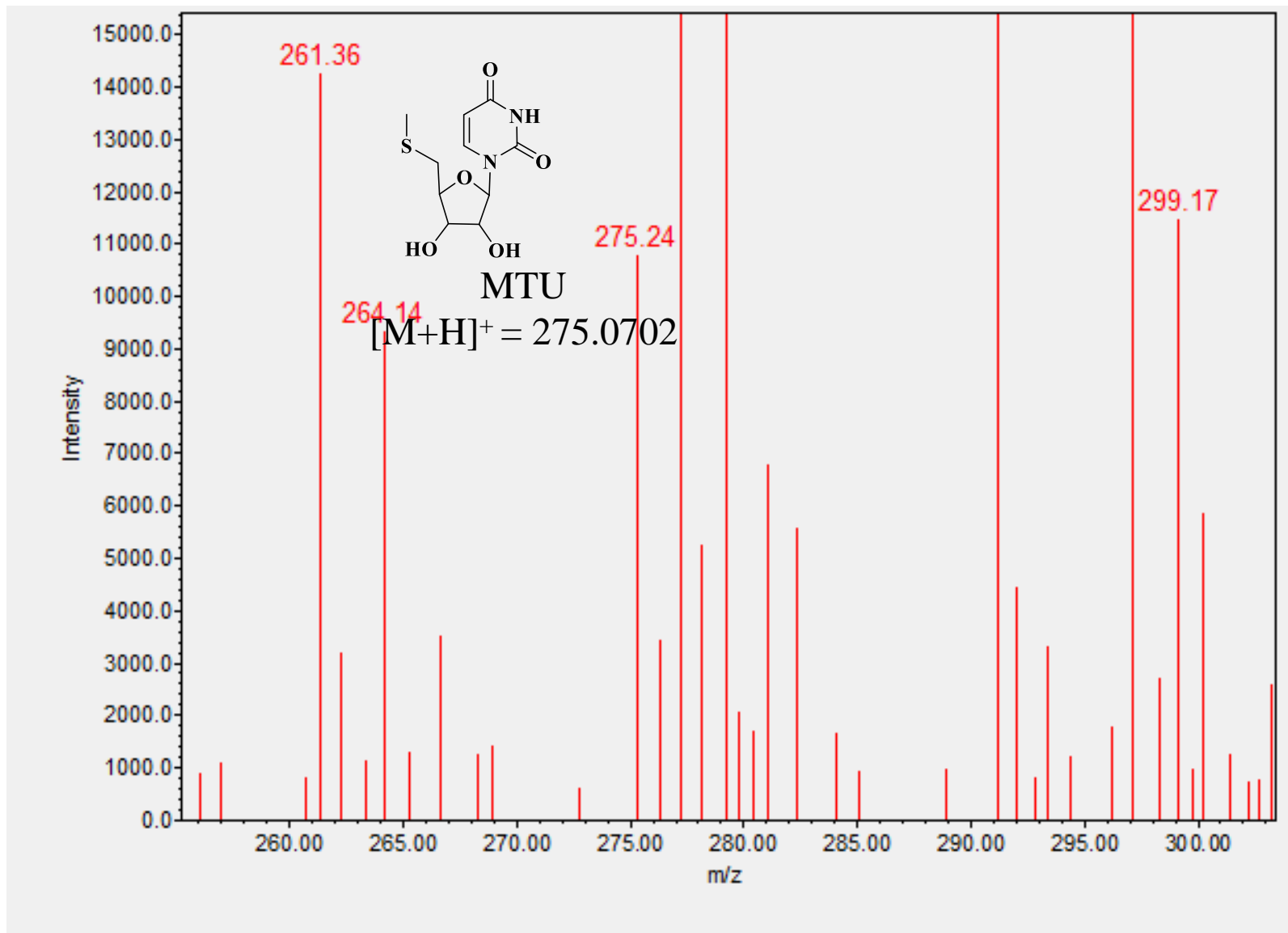
Mass spectrum of SCM using Acquity UPLC H-Class System with Acquity QDa Detector. Mass of SCM extracted at retention time 4.6 min, showing expected mass 375.29.



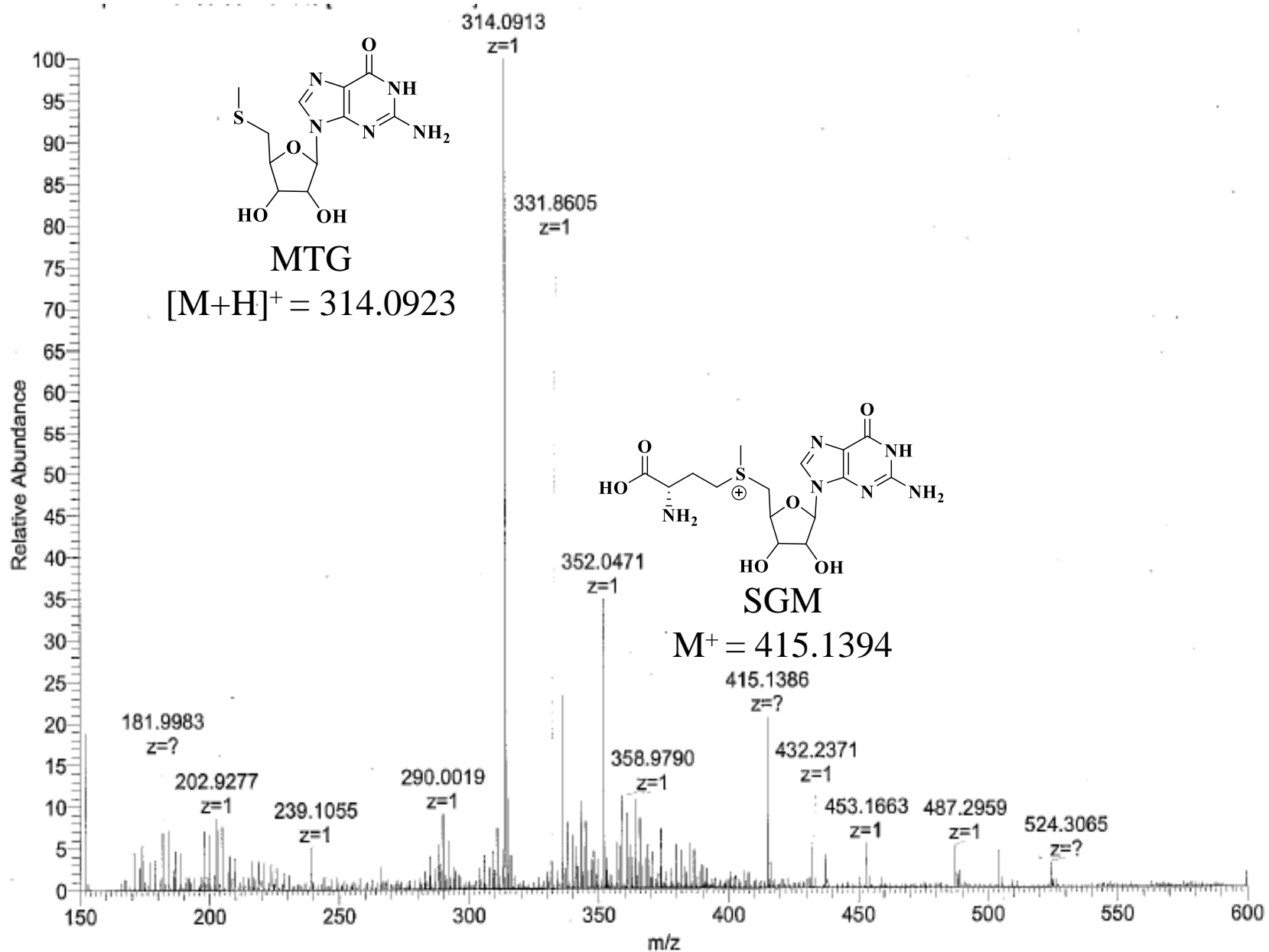
Mass spectrum of MTC using Acquity UPLC H-Class System with Acquity QDa Detector. Mass of MTC extracted at retention time 1.4 min, showing expected mass 274.18 $[M+H]^+$.



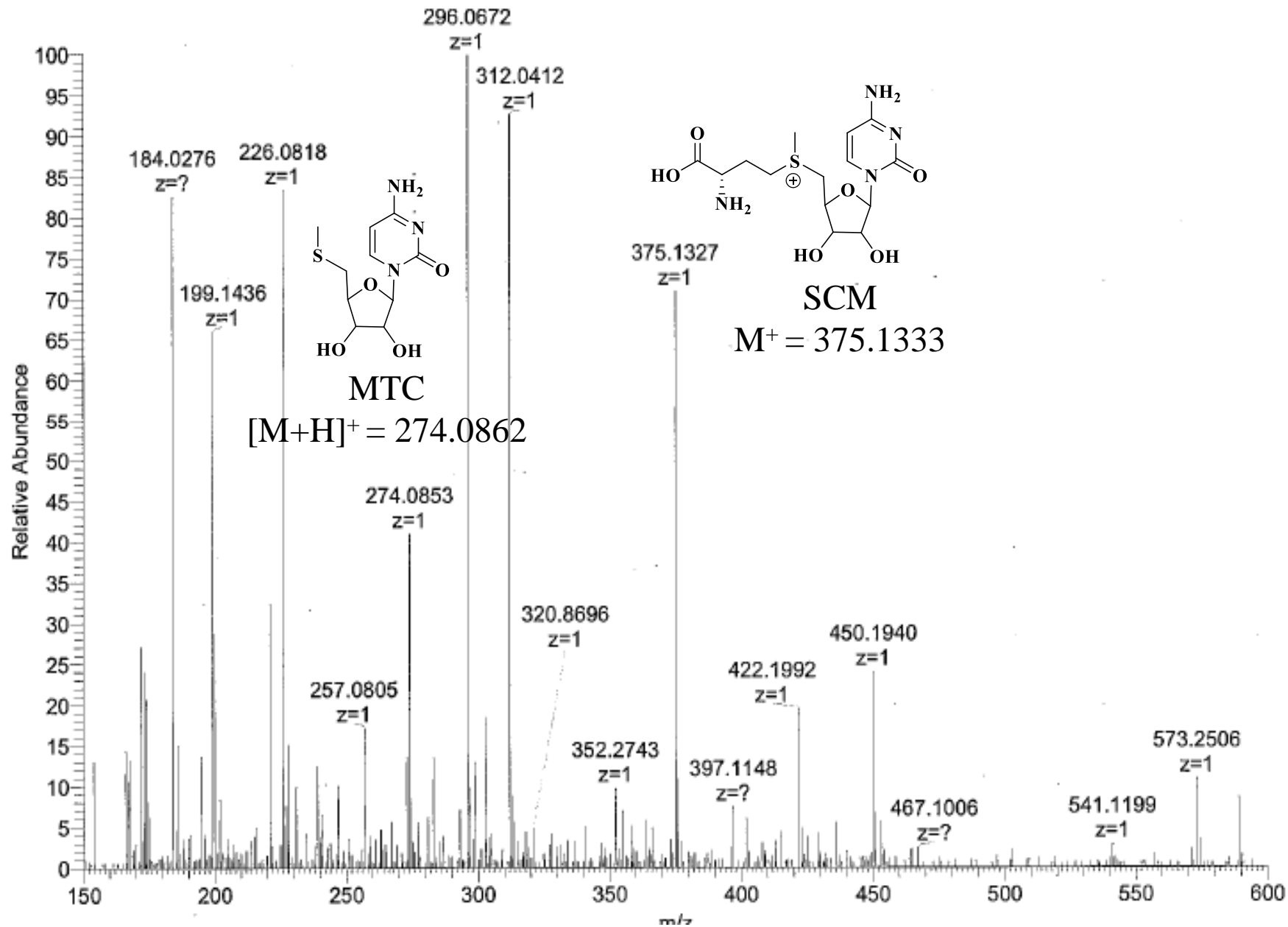
Mass spectrum of SUM using Acquity UPLC H-Class System with Acquity QDa Detector. Mass of SUM extracted at retention time 4.6 min, showing expected mass 376.26.



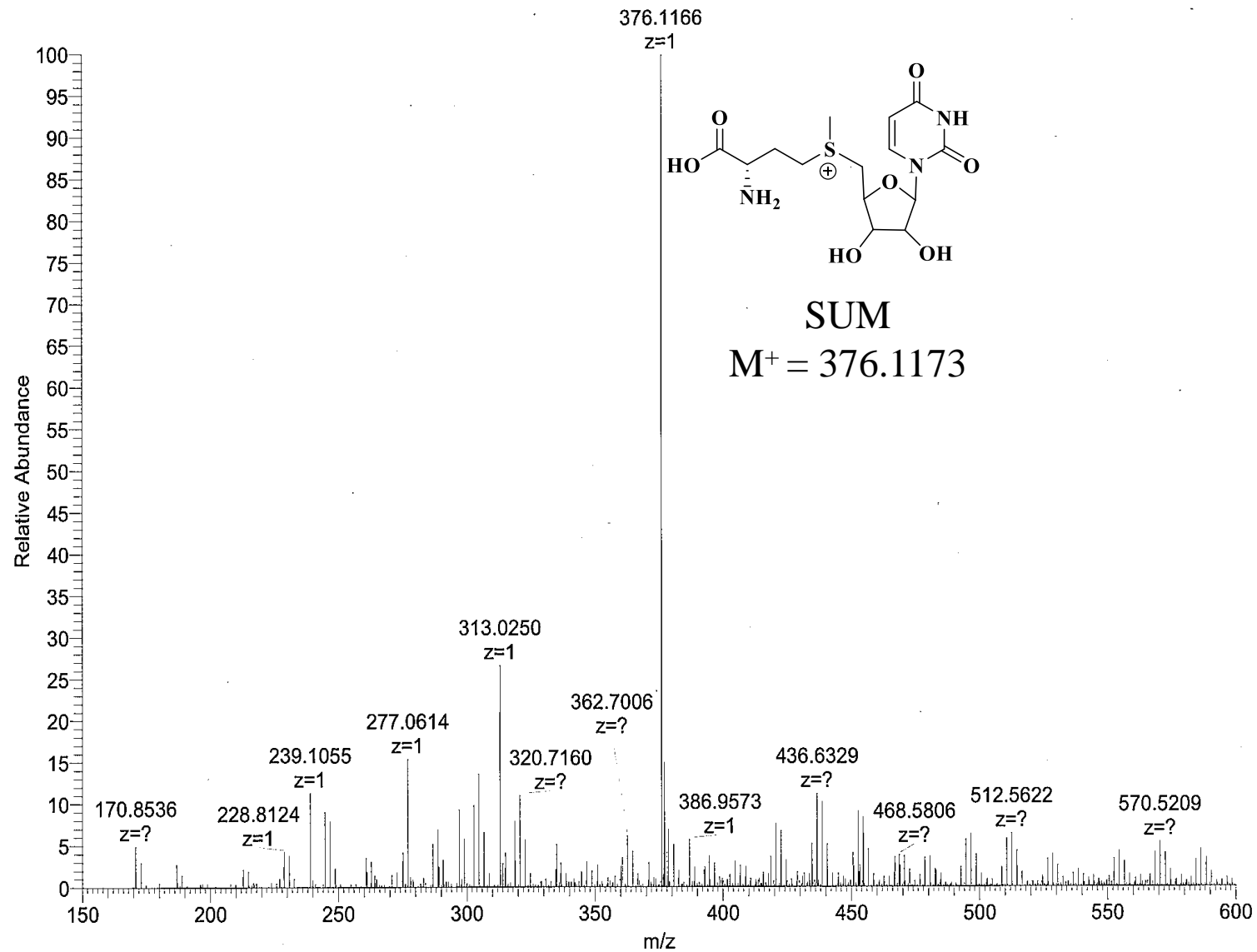
ESI-MS mass spectrum of MTU. Mass of MTU extracted at retention time 1.3 min, showing expected 275.24 mass.



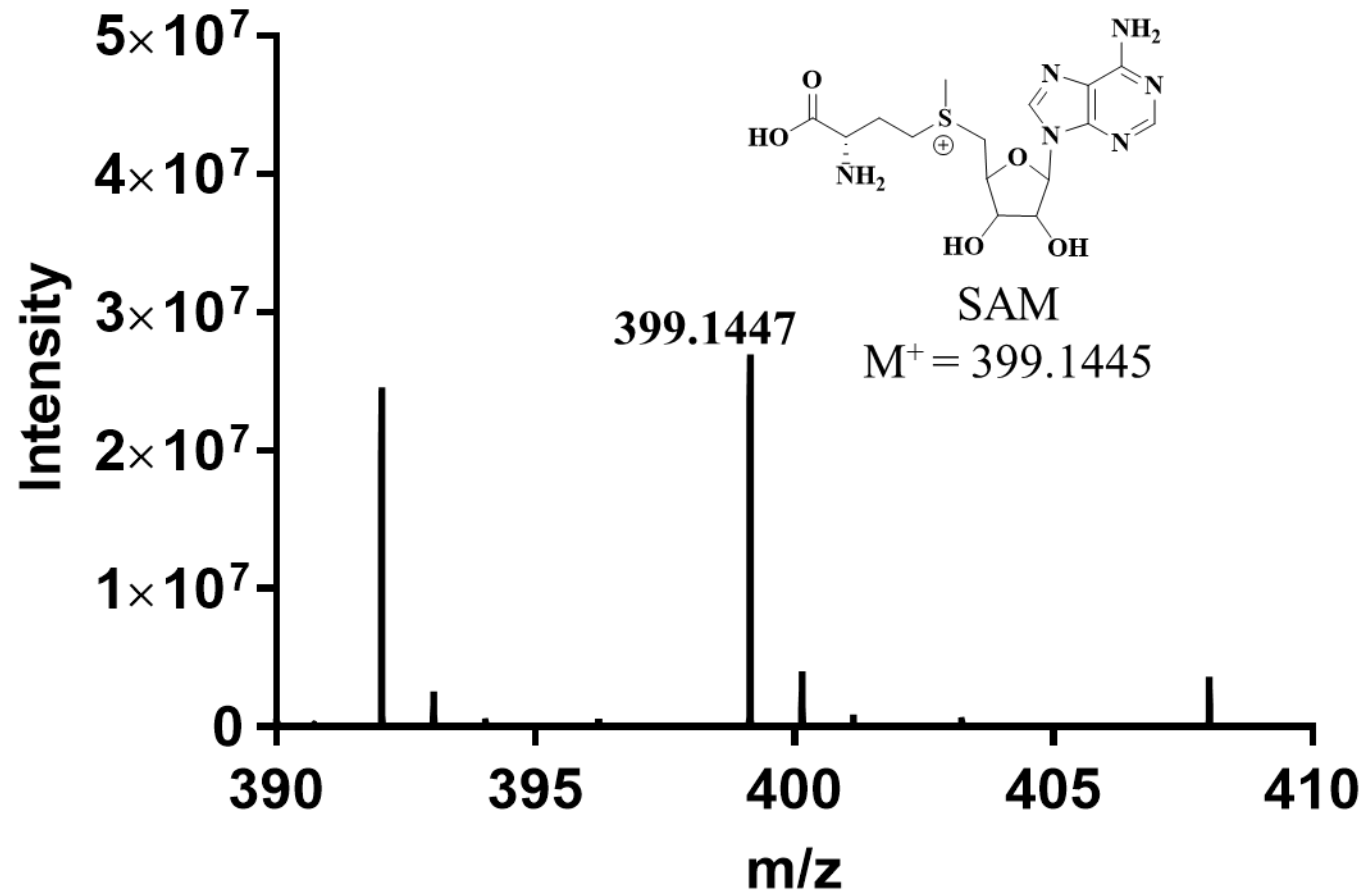
ESI-MS spectrum of SGM after purification. Purified SGM showing expected mass 415.1386 and degradation product MTG mass 314.0913 $[M+H]^+$.



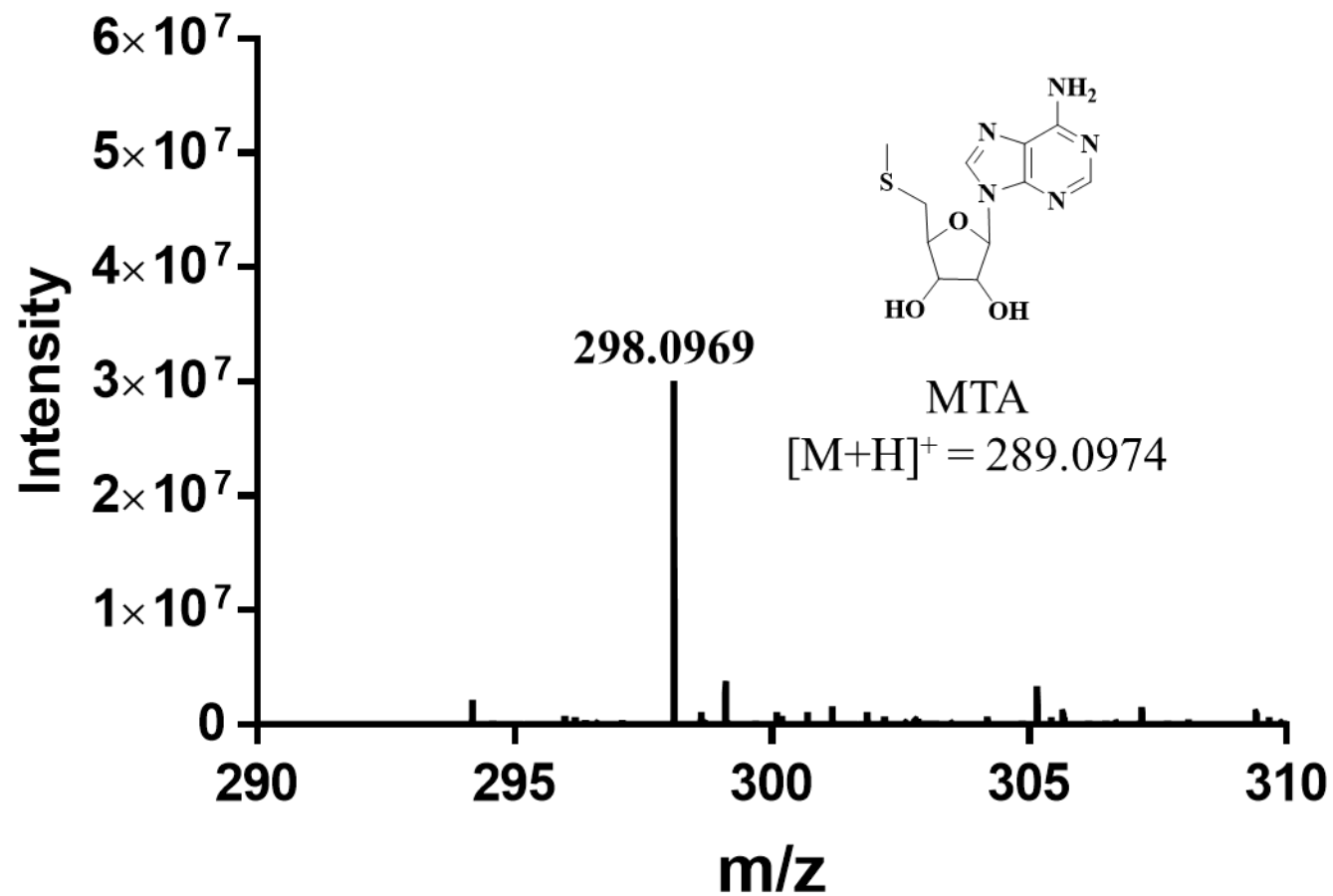
ESI-MS spectrum of SCM after purification. Purified SCM showing expected mass 375.1327 and degradation product MTC mass 274.0853 $[M+H]^+$.



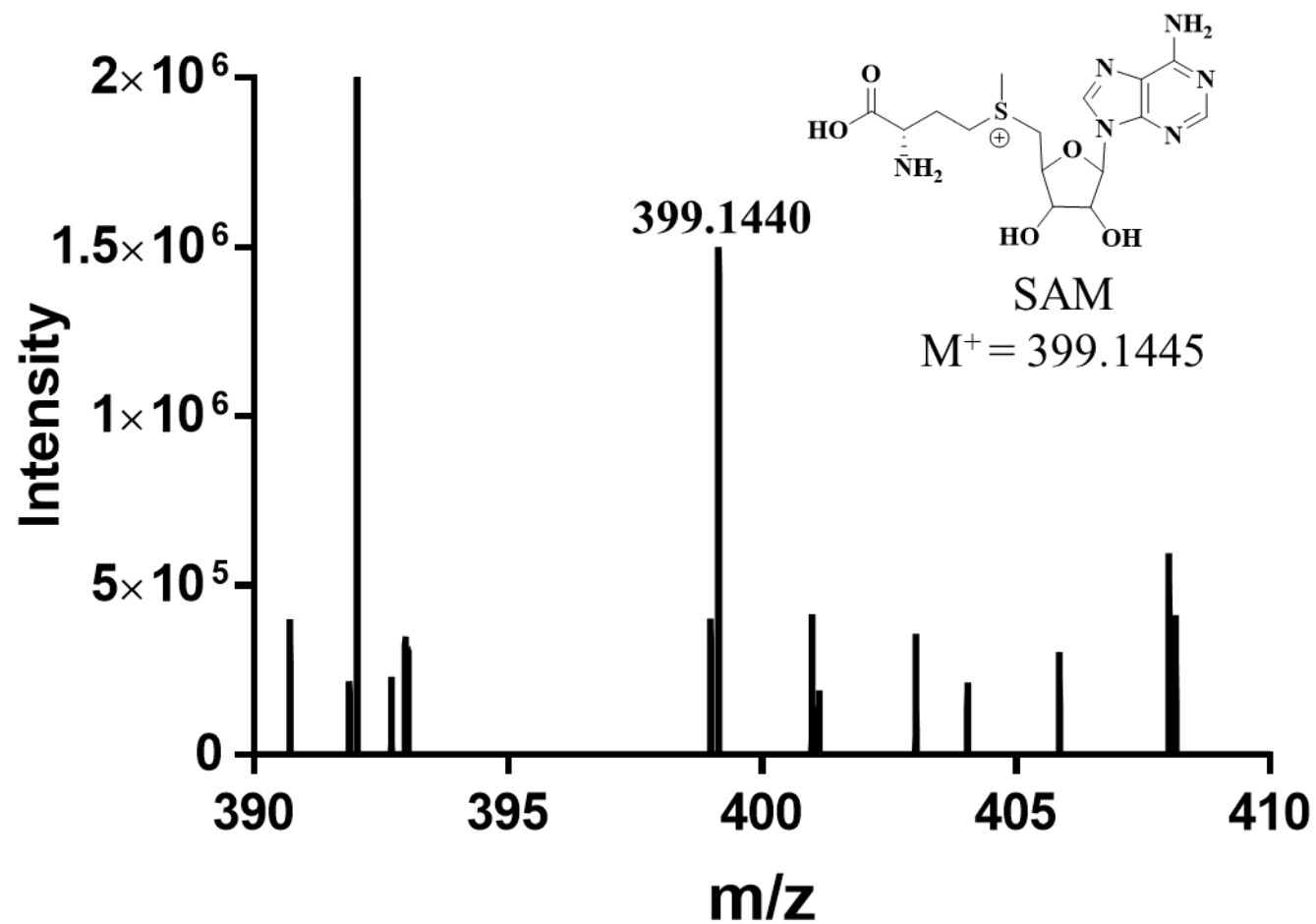
ESI-MS spectrum of SUM after purification. Purified SUM showing expected mass 376.1166.



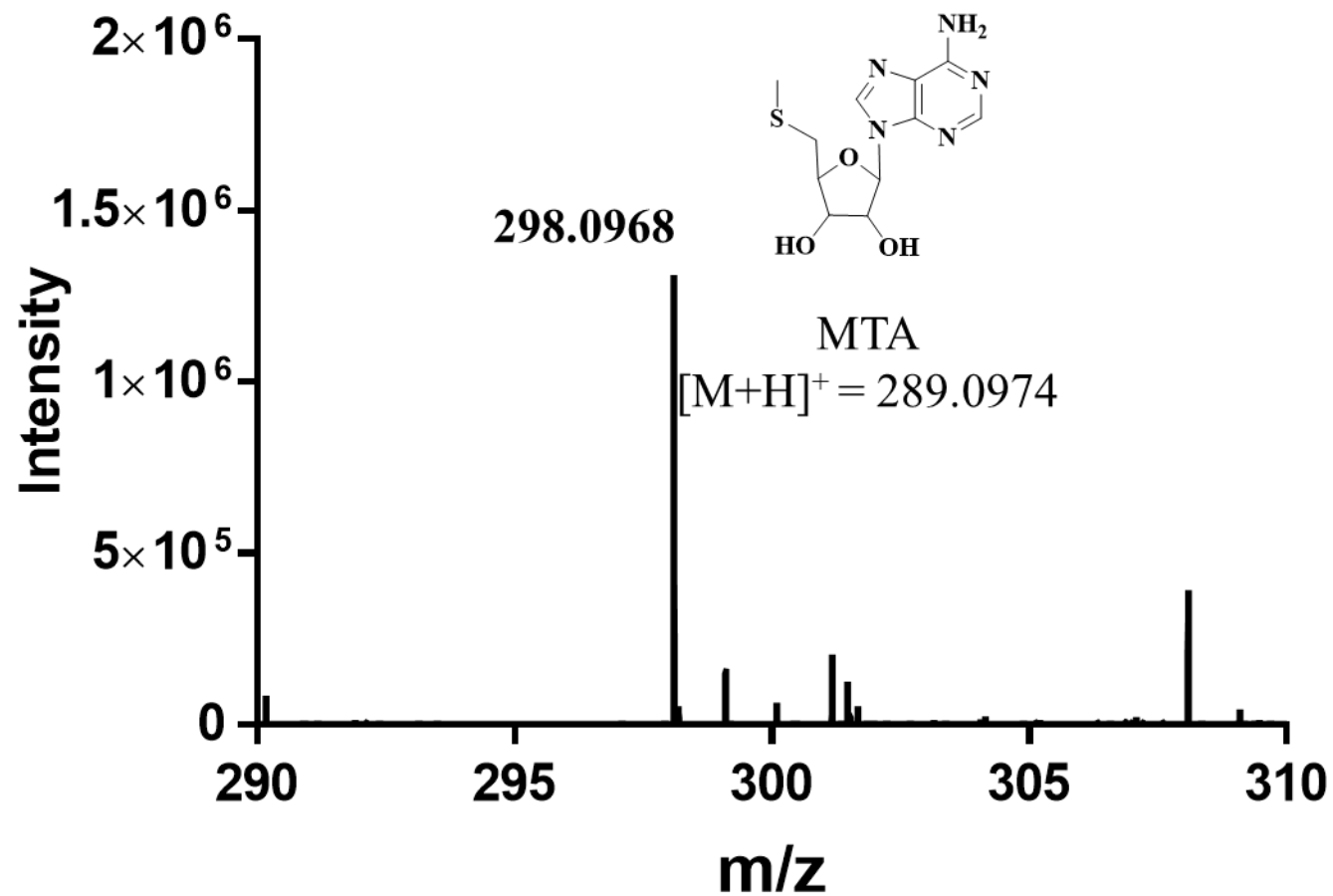
Mass spectrum of HepG2 extract showing the mass of SAM⁺ 399.1445



Mass spectrum of HepG2 extract showing the mass of MTA $[M+H]^+ 298.0974$



Mass spectrum of THLE-2 extract showing the mass of SAM⁺ 399.1445



Mass spectrum of THLE-2 extract showing the mass of MTA $[M+H]^+$ 298.0974