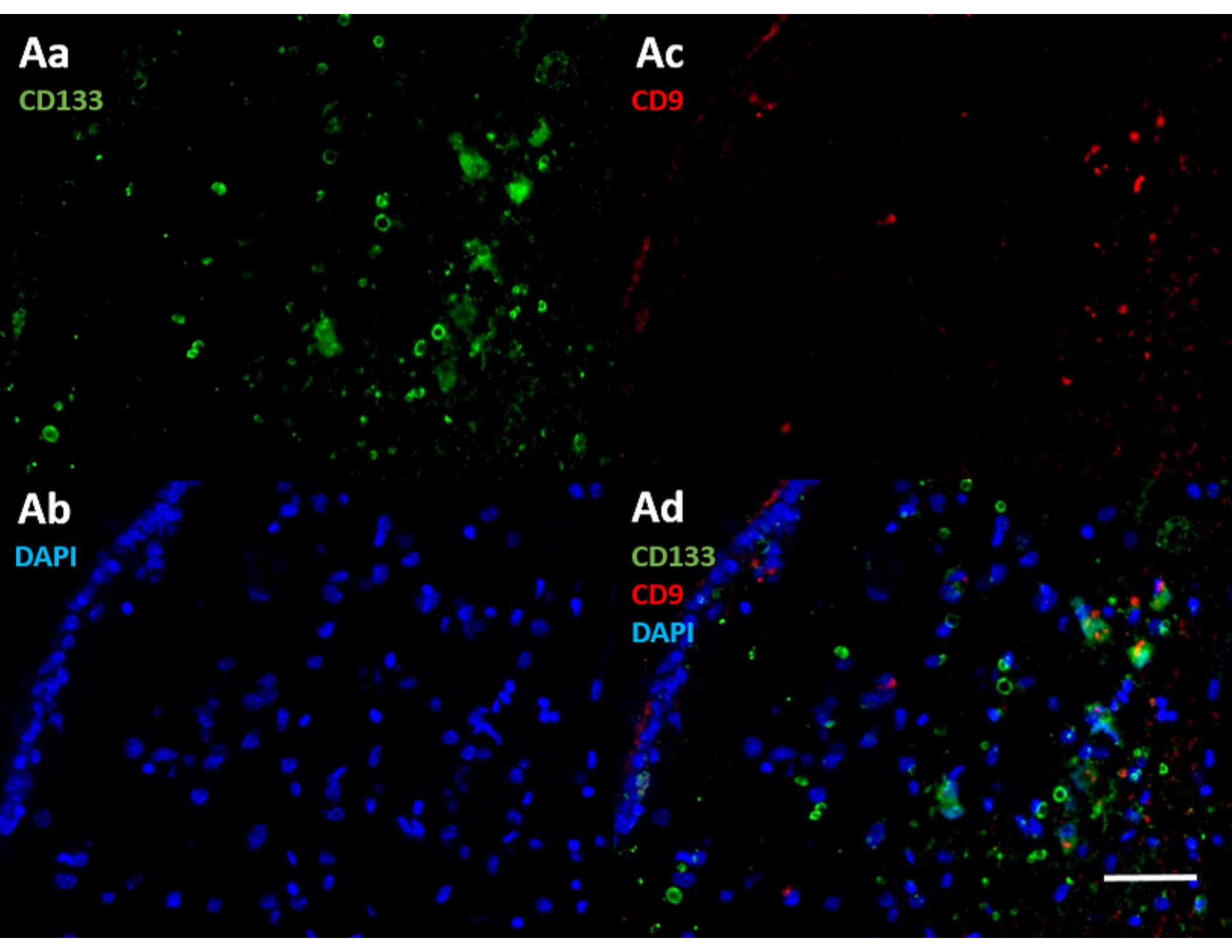


Supplemental Figure 1A-1B

Suppl. Fig. 1. Monochrome immunofluorescence images of a human SVZ containing NSCs and GSCs (**A**) and a peri-arteriolar GSC niche in a human glioblastoma tumor (**B**). CD133 is stained in green (**Aa** and **Ba**), DAPI staining of cell nuclei in blue (**Ab** and **Bb**), and CD9 is stained in red (**Ac** and **Bc**). The composition images which were the basis for the construction of the pseudocolor images in Figure 1 are shown in **Ad** and **Bd**. Bars, 100 μm .



Aa
CD133

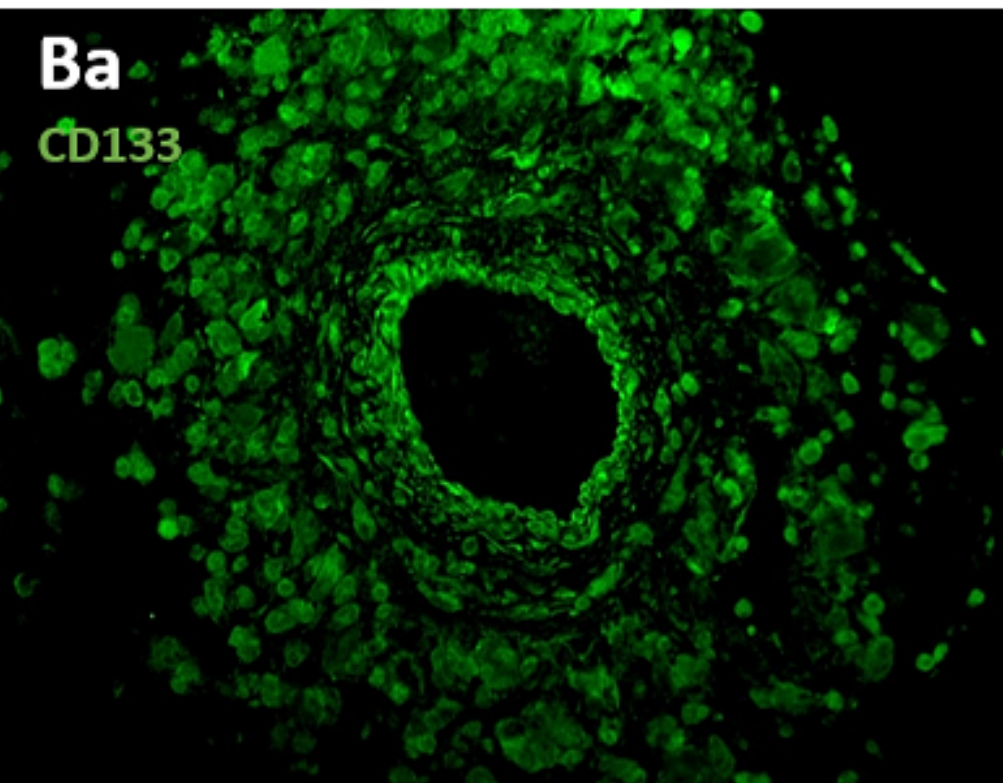
Ac
CD9

Ab
DAPI

Ad
CD133
CD9
DAPI

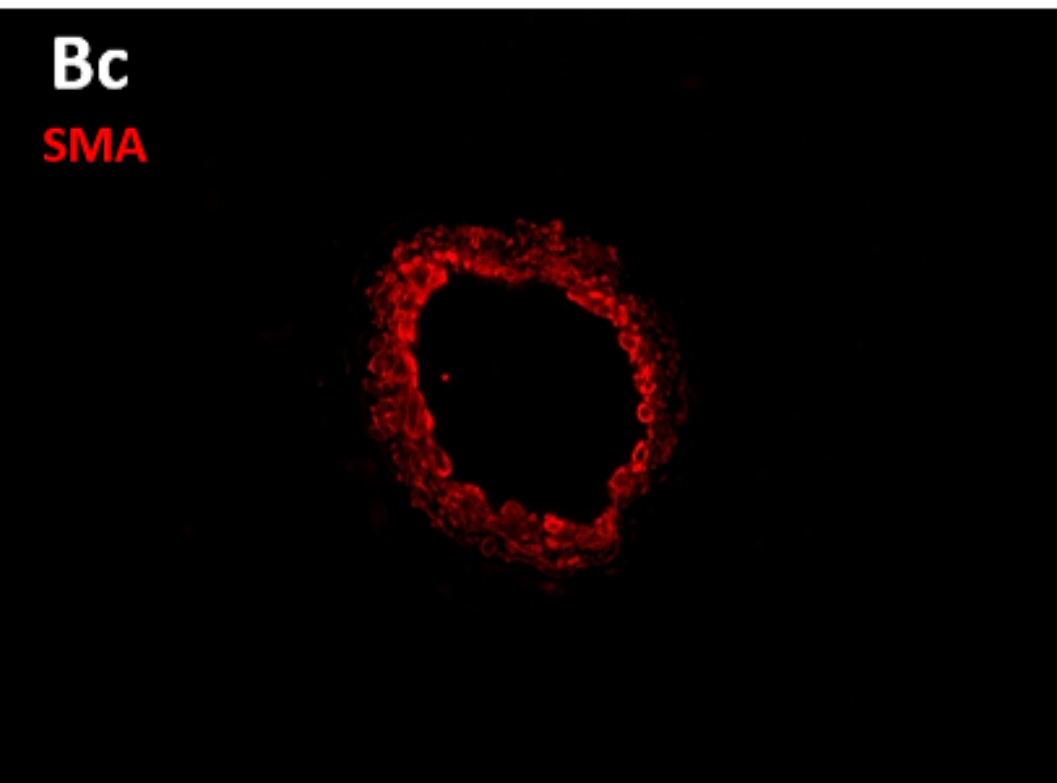
Ba

CD133



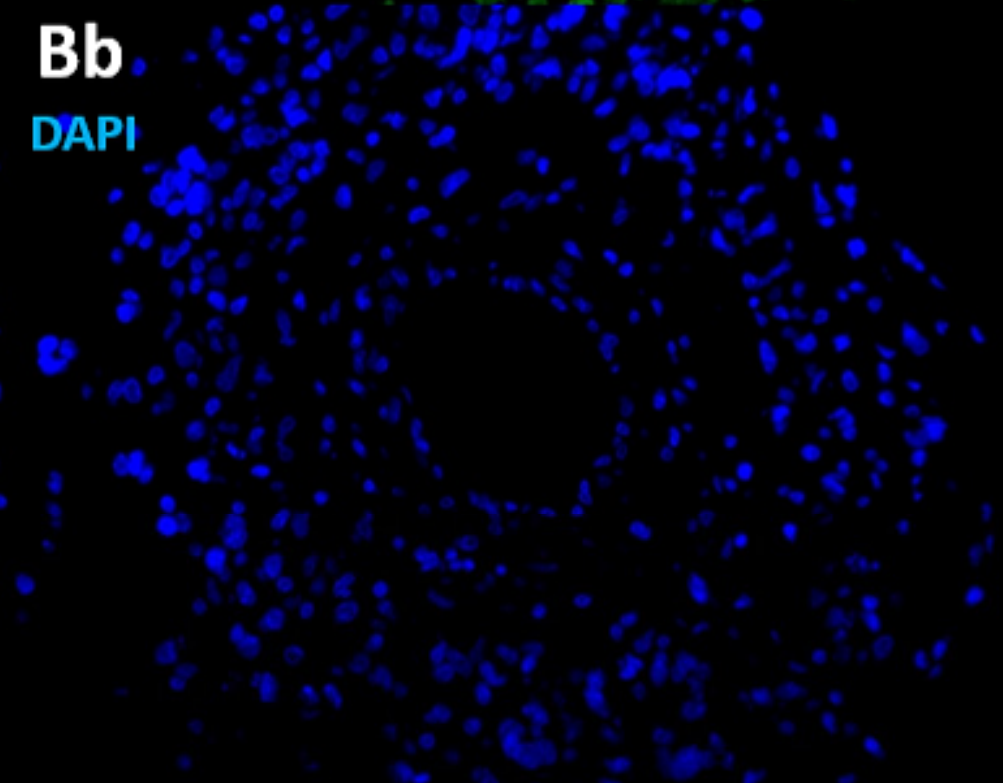
Bc

SMA



Bb

DAPI



Bd

CD133
SMA
DAPI

