

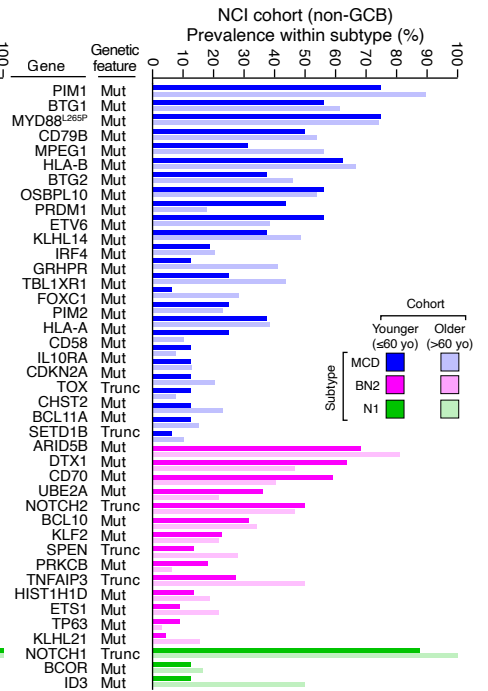
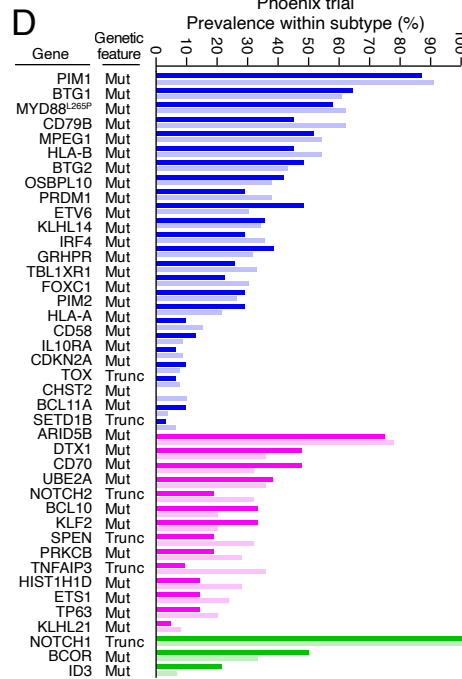
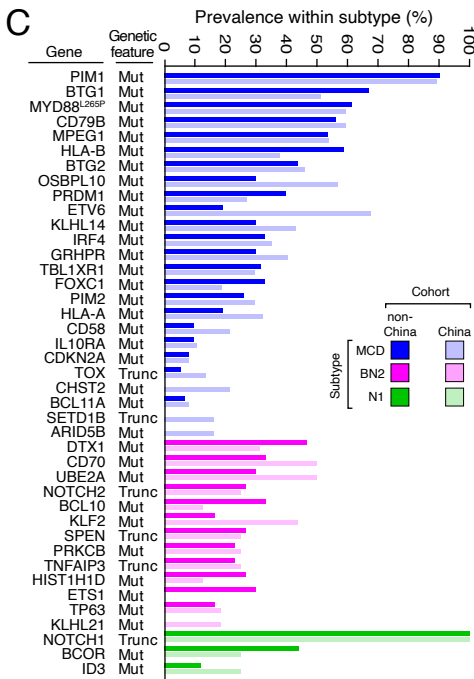
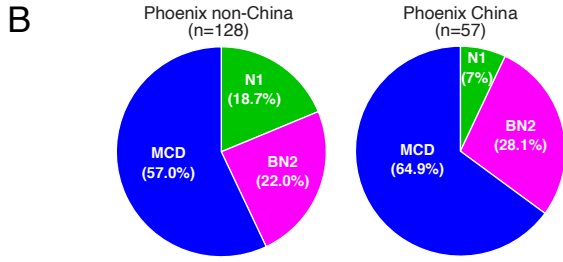
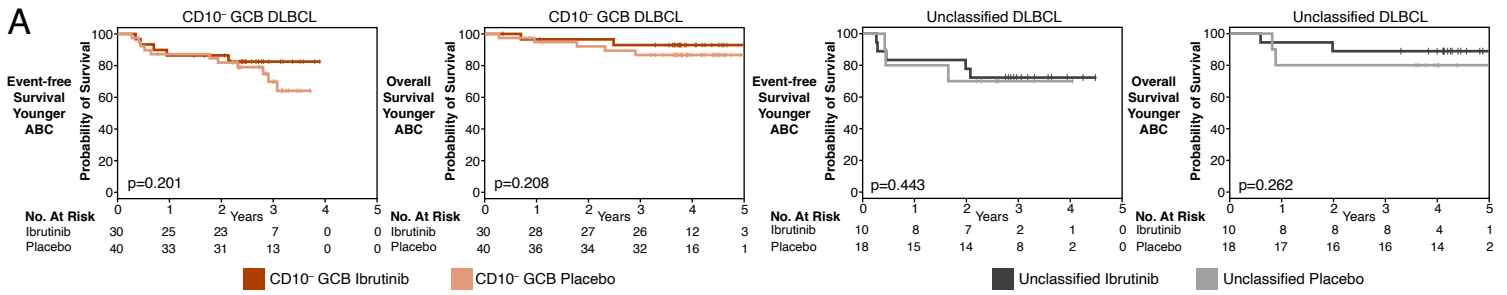
**Cancer Cell, Volume 39**

**Supplemental information**

**Effect of ibrutinib with R-CHOP chemotherapy  
in genetic subtypes of DLBCL**

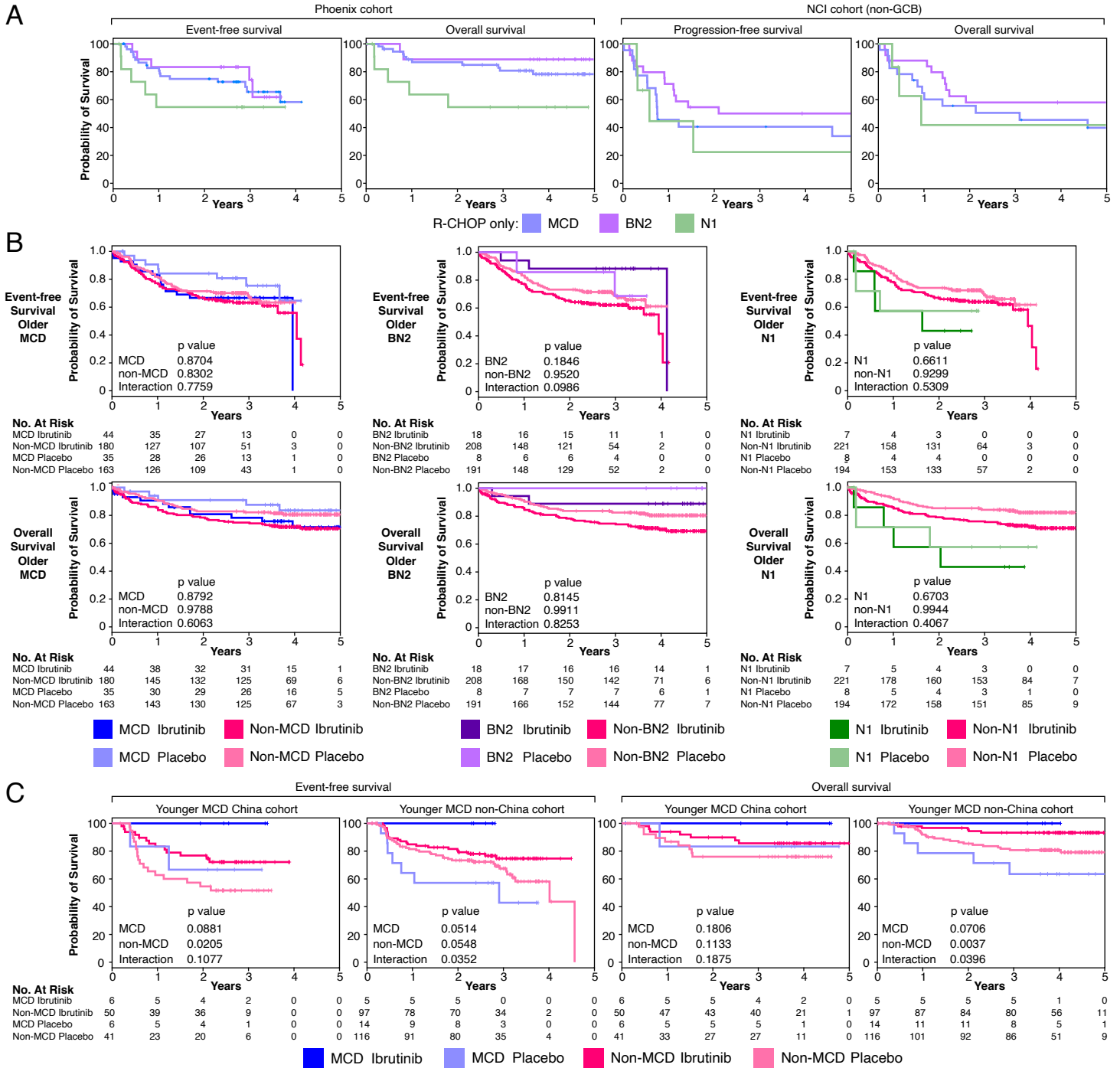
**Wyndham H. Wilson, George W. Wright, Da Wei Huang, Brendan Hodgkinson, Sriram Balasubramanian, Yue Fan, Jessica Vermeulen, Martin Shreeve, and Louis M. Staudt**

Figure S1



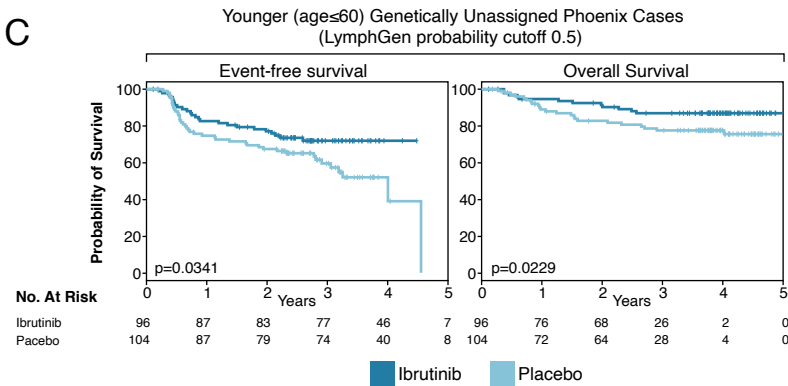
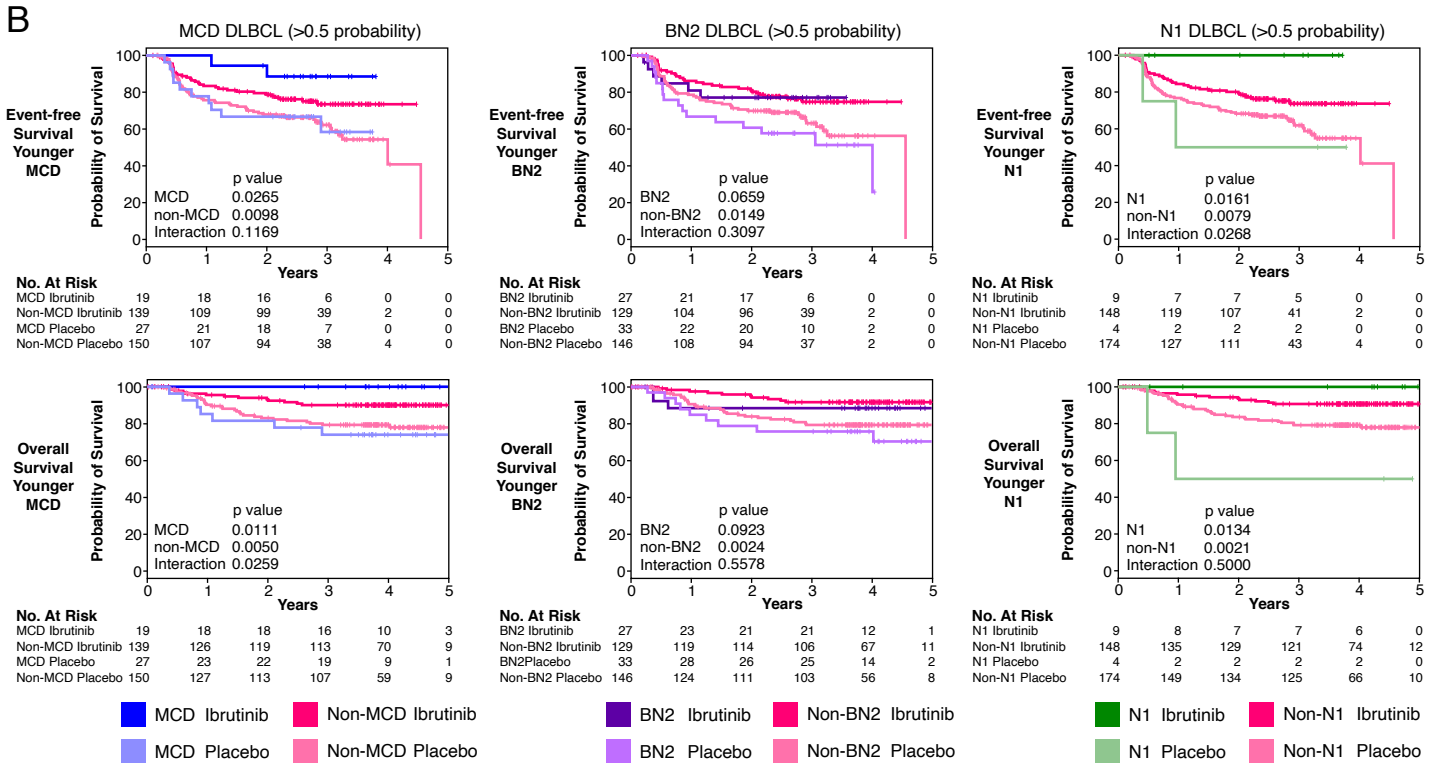
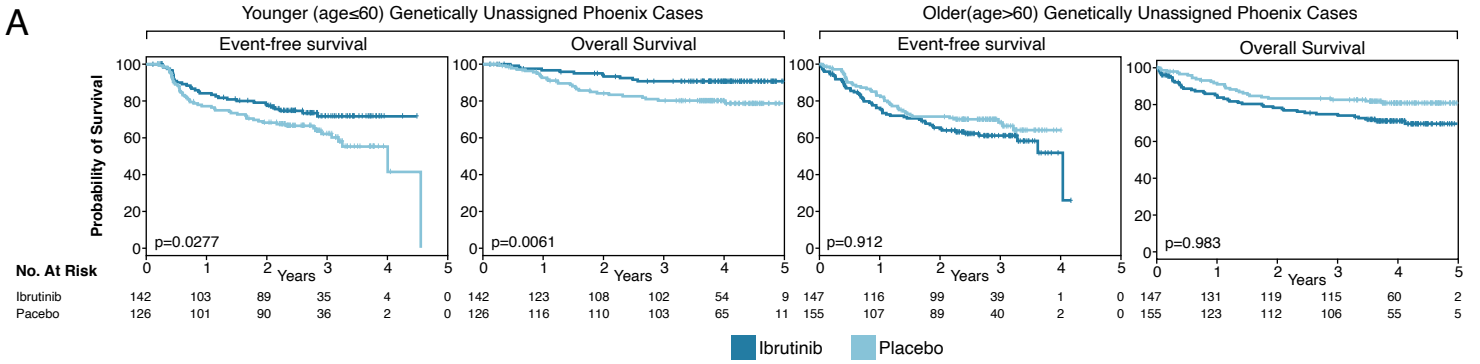
**Figure S1 Genetic and clinical analysis of patient subsets in the Phoenix clinical trial, related to Figure 1** **A.** Kaplan-Meier plots of event-free and overall survival of patients with CD10<sup>-</sup> GCB DLBCL or Unclassified DLBCL in the indicated Phoenix trial arms. **B.** Prevalence of subtype-defining genetic aberrations in the China and non-China cohorts from the Phoenix trial. **C.** Contribution of the indicated genetic subtypes to the China and non-China cohorts. **D.** Prevalence of subtype-defining genetic aberrations among younger (age≤60) and older (age>60) patients.

Figure S2



**Figure S2 Extended survival analysis, related to Figure 3** **A.** Kaplan-Meier plots of event-free and overall survival for all patients enrolled on the Phoenix trial compared with Kaplan-Meier plots of progression-free and overall survival for all patients in the NCI cohort. **B.** Kaplan-Meier plots of event-free and overall survival in older (age>60) patients enrolled on the Phoenix trial. **C.** Kaplan-Meier plots of event-free and overall survival in younger (age  $\leq$  60) patients assigned to the MCD subtype compared with non-MCD patients in the China and non-China cohorts. Shown are log-rank p values for the difference in survival in the indicated genetic subtype treated with R-CHOP plus ibrutinib or placebo. The interaction p value indicates the significance of the difference in ibrutinib benefit within the indicated genetic subtype compared with all other DLBCLs.

# Figure S3



**Figure S3 Analysis of survival in genetically unassigned Phoenix trial cases and in extended LymphGen subtypes, related to Figure 3**

**A.** Kaplan-Meier plots of event-free and overall survival in genetically unassigned (non-MCD, non-BN2, non-N1) cases, in younger and older patients on the ibrutinib or placebo arms, as indicated.

**B.** Kaplan-Meier plots of event-free and overall survival in younger MCD, BN2 and N1 patients using a less stringent LymphGen probability cutoff (>50%), in the ibrutinib or placebo arms, as indicated.

**C.** Kaplan-Meier plots of event-free and overall survival in cases that were genetically unassigned using the less stringent probability cutoff (>50%), in younger patients on the ibrutinib or placebo arms, as indicated