

Supplemental Figure 1

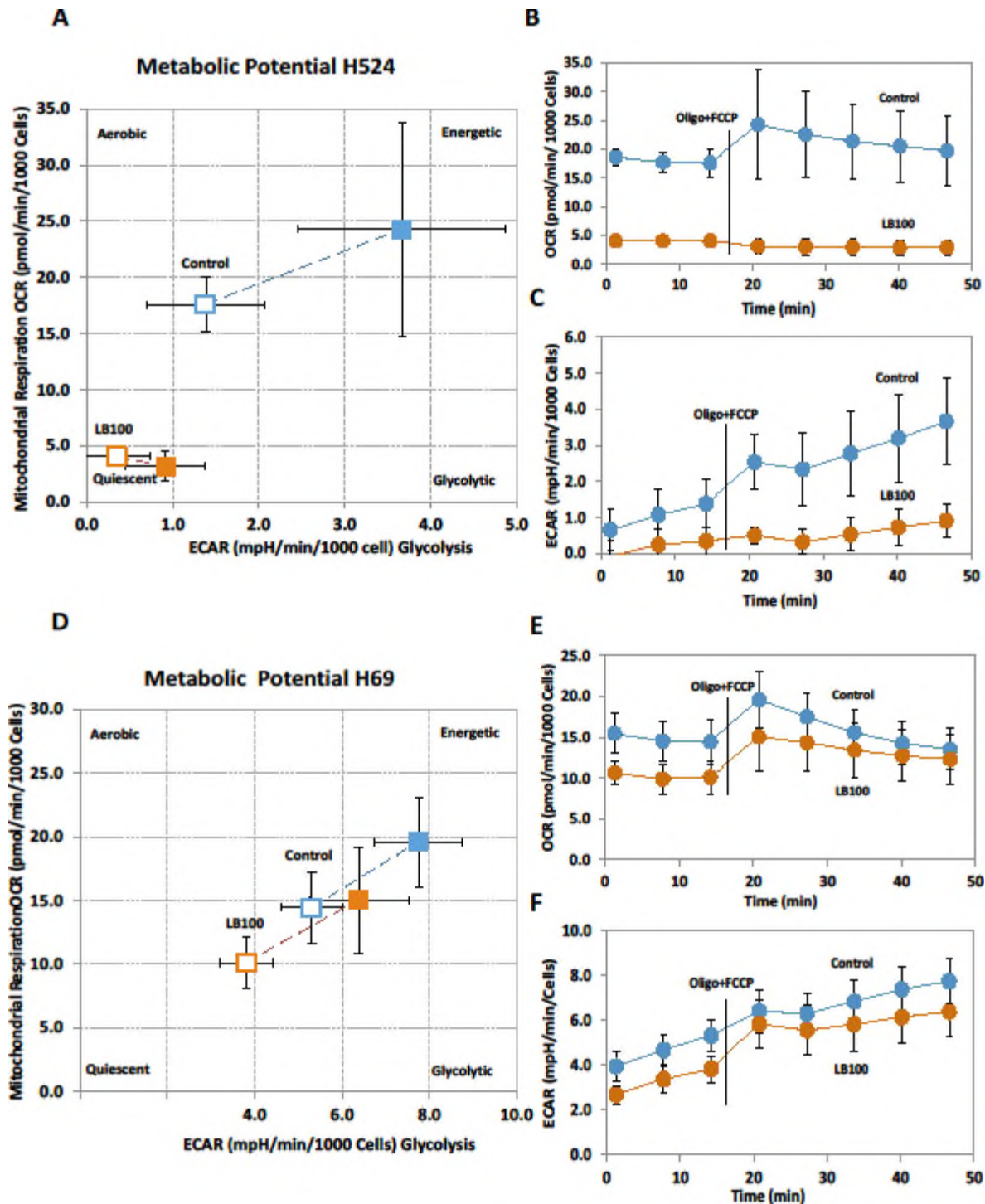


Fig. S1. Effect of LB100 on cell energy phenotype in SCLC cells. (A) LB100 treatment (2.5 μ M) induced metabolic switch in H524 cells. Cell energy phenotype was obtained by using XF Cell Energy Phenotype Reporter Generator. Empty squares indicate baseline energy phenotype, solid squares represent stressed energy phenotype measured after oligomycin/FCCP injection. (B, C) OCR and ECAR in control (blue circles) and LB100 (orange circles) H524 cells were measured over time. (n=2, six different wells for each study participant). (D) Effect of LB100 (10 μ M) on H69 cell energy phenotype. (E, F) Effect of mitochondrial stressor on OCR and ECAR in H69 cells. Blue circles indicate control and orange circles show LB100 treatment. (n=2, six technical replicates).