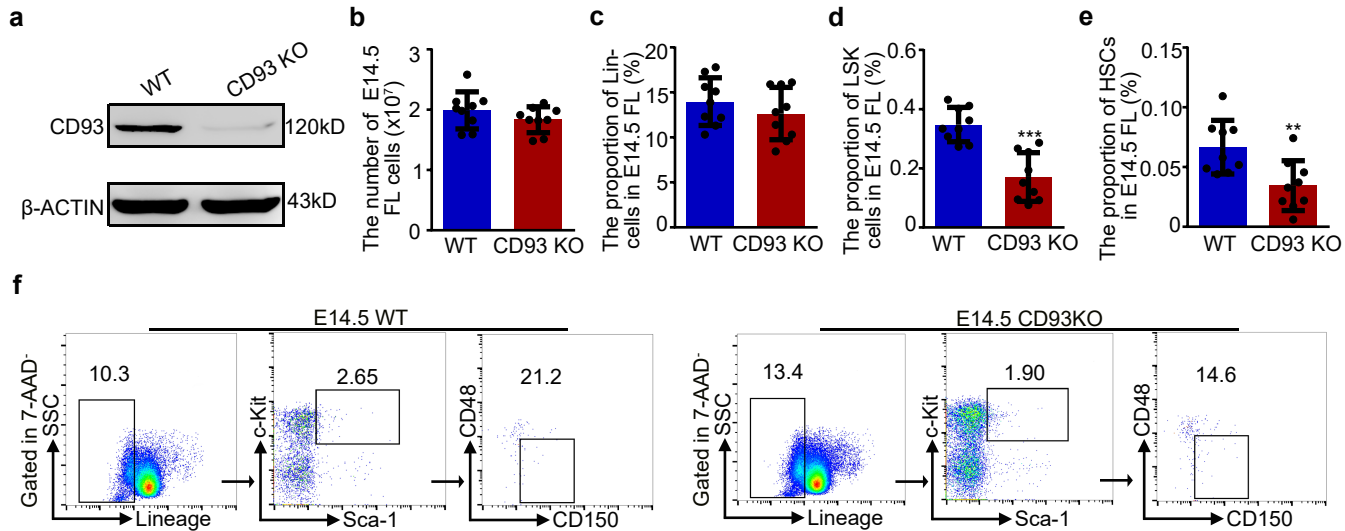


Supplementary information, Fig. S4



Supplementary information, Fig. S4. CD93 is required for FL HSC/MPP development. a

The protein level of CD93 in the E14.5 WT and CD93 KO FL examined by western blotting. **b**

Total cellularity of E14.5 FL in WT and CD93 KO mice. $n > 3$ biological replicates. **c** The

proportion of E14.5 FL Lineage⁻ (Lin⁻) cells in WT and CD93 KO mice. $n > 3$ biological

replicates. **d** The proportion of E14.5 FL LSK cells in WT and CD93 KO mice. $n > 3$ biological

replicates. **e** The proportion of E14.5 FL HSCs (SLAM-LSK cells) in WT and CD93 KO mice.

$n > 3$ biological replicates. **f** Flow cytometry analysis showing the proportions of E14.5 FL Lin⁻,

LSK, SLAM-LSK cells in in WT and CD93 KO mice. The statistical results are presented as

mean \pm SEM. Student's t test: **, $P < 0.01$; ***, $P < 0.001$.