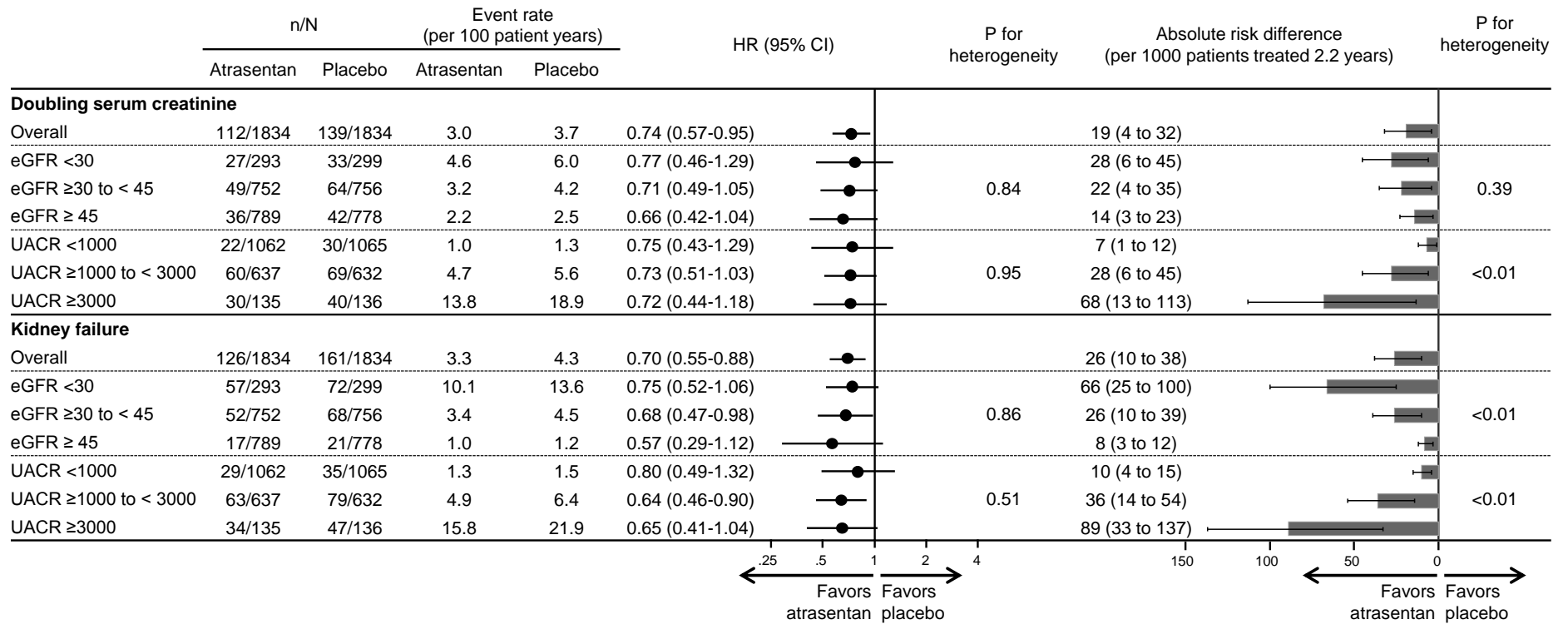


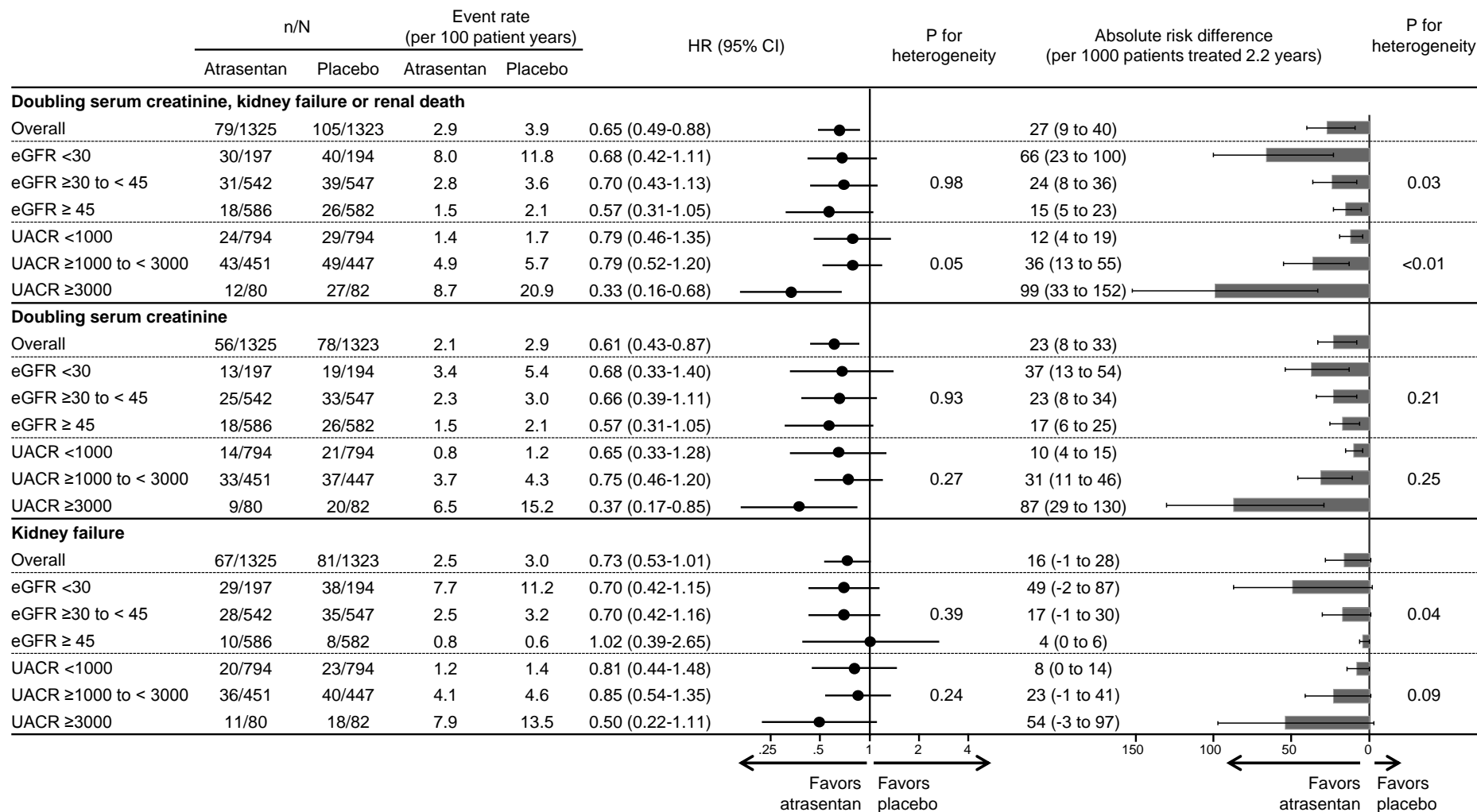
Supplementary Material – Table of contents

- Supplemental Figure 1: effect of atrasentan on the doubling of serum creatinine and kidney failure across baseline eGFR and UACR categories
- Supplemental Figure 2: The effect of atrasentan on kidney endpoints across baseline eGFR and UACR categories in the atrasentan responder population.
- Supplemental Figure 3: The effect of atrasentan on heart failure and cardiovascular death across baseline eGFR and UACR categories.
- Supplemental Figure 4: The effect of atrasentan on heart failure, and heart failure and cardiovascular death, across baseline eGFR and UACR categories in the atrasentan responder population.

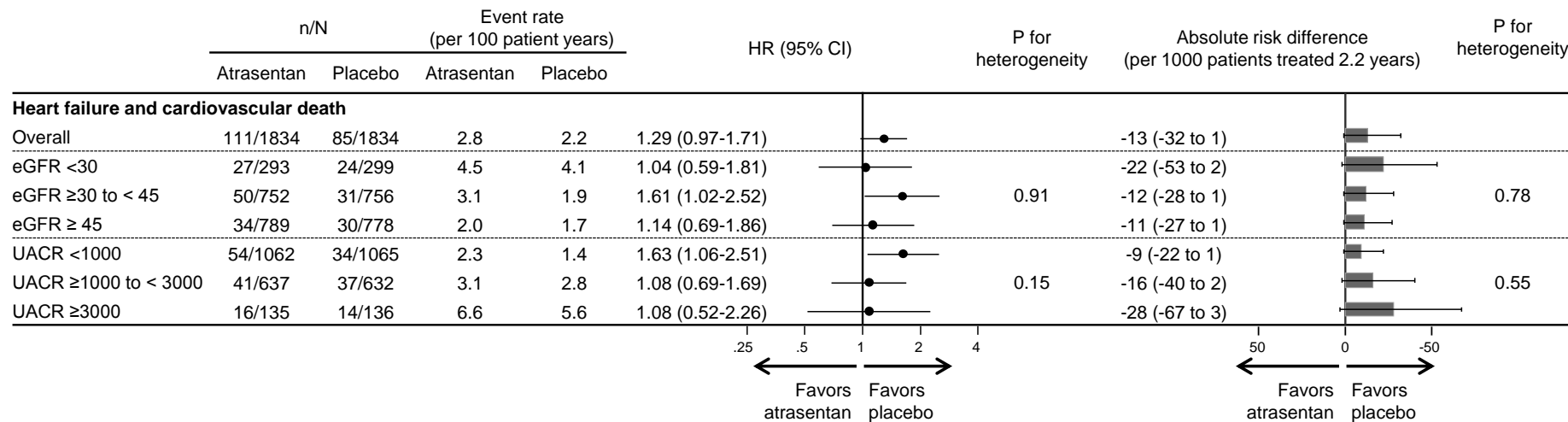
Supplemental Figure 1: effect of atrasentan on the doubling of serum creatinine and kidney failure across baseline eGFR and UACR categories. Figure shows the relative effect and absolute risk difference.



Supplemental Figure 2: The effect of atrasentan on kidney endpoints across baseline eGFR and UACR categories in the atrasentan responder population. Figure shows the relative effect and absolute risk difference.



Supplemental Figure 3: The effect of atrasentan on heart failure and cardiovascular death across baseline eGFR and UACR categories. Figure shows the relative effect and absolute risk difference



Supplemental Figure 4: The effect of atrasentan on heart failure, and heart failure and cardiovascular death, across baseline eGFR and UACR categories in the atrasentan responder population. Figure shows the relative effect and absolute risk difference.

