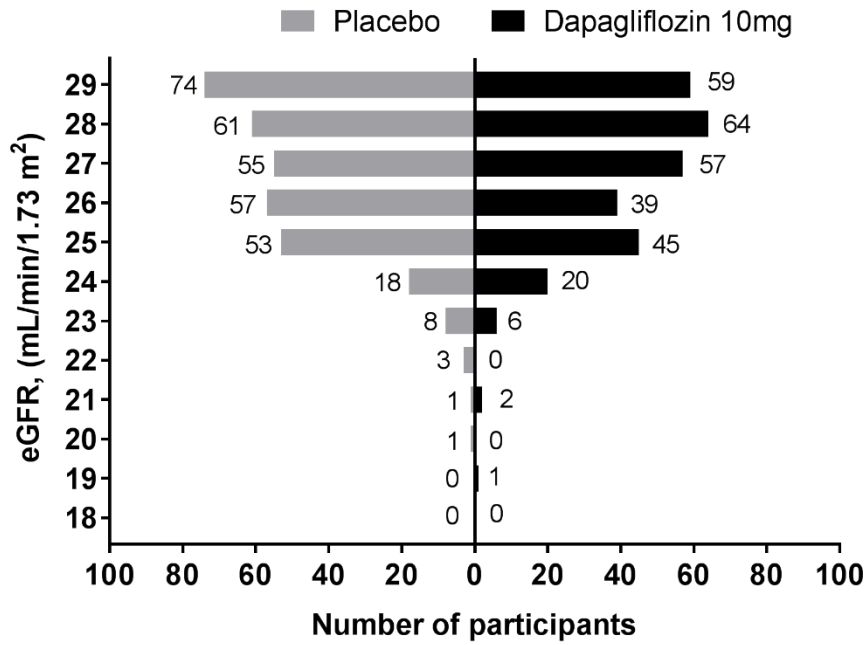


SUPPLEMENTAL MATERIALS

TABLE OF CONTENTS

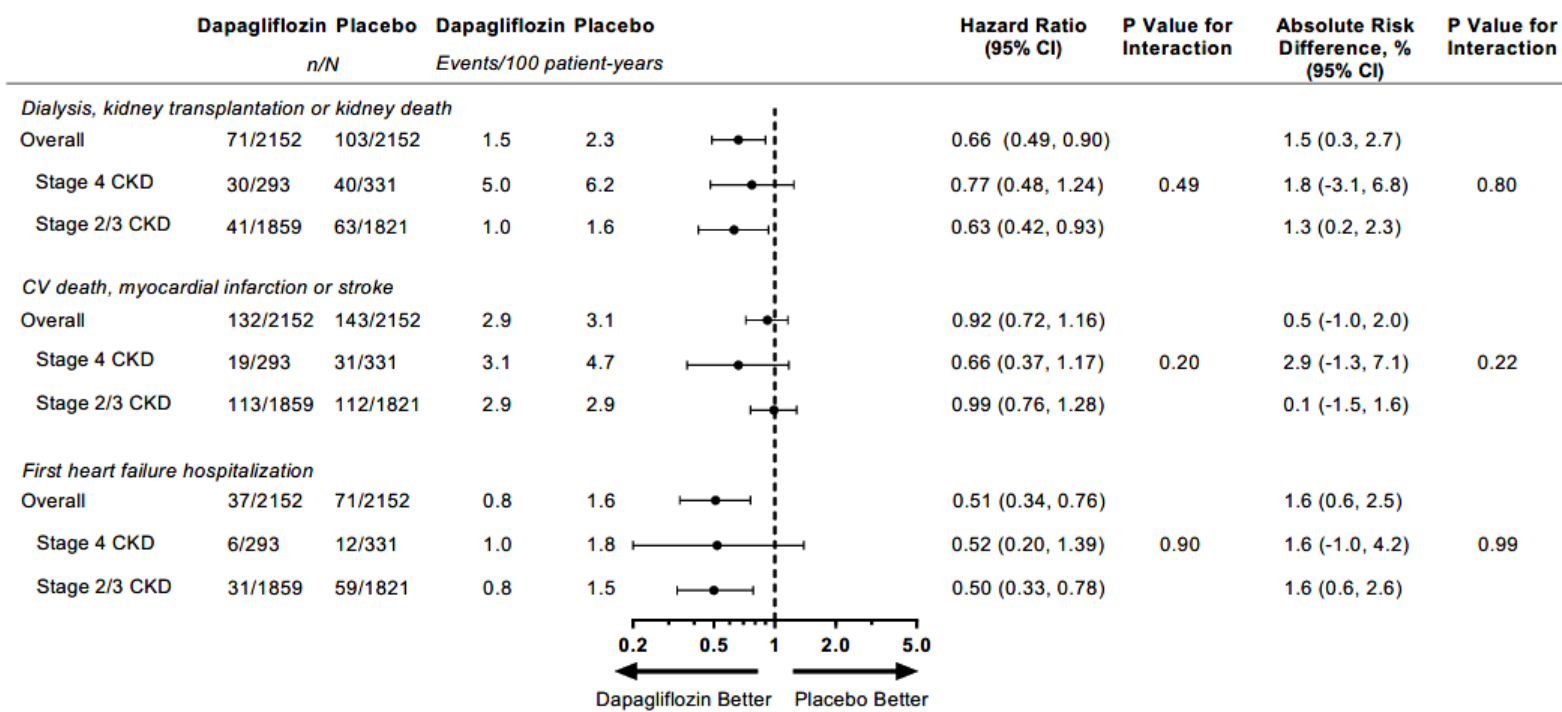
Figure S1. Distribution of eGFR values at baseline in patients with baseline eGFR <30 mL/min/1.73m ²	2
Figure S2. Forest plots for the prespecified exploratory endpoints by baseline CKD stage	3
Figure S3. Forest plots for the <i>post-hoc</i> exploratory endpoints by baseline CKD stage	4

Figure S1. Distribution of eGFR values at baseline in patients with baseline eGFR <30 mL/min/1.73m²



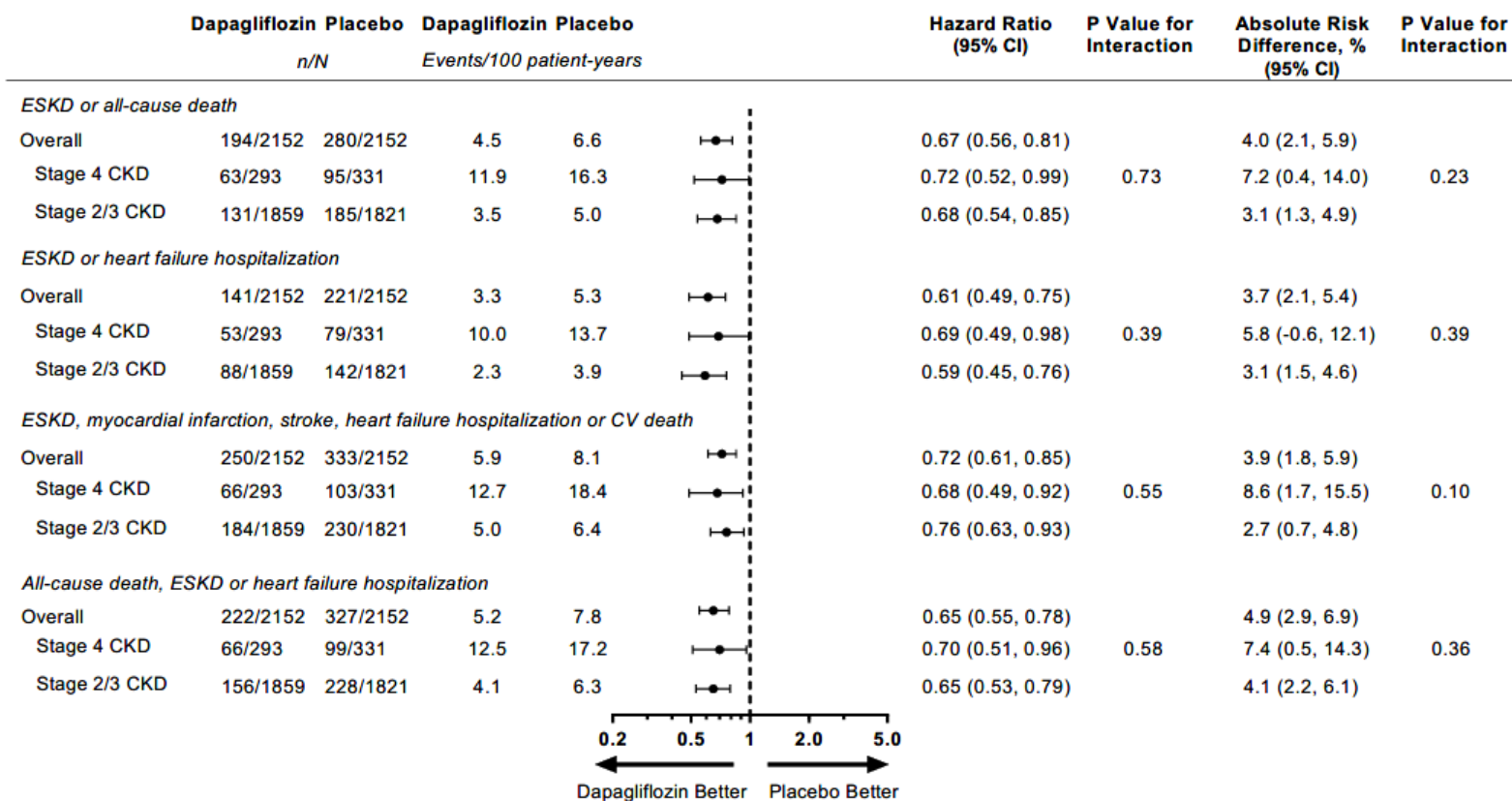
All participants whose baseline eGFR was <25 mL/min/1.73m² (n=60) had screening eGFR 25-75 mL/min/1.73m² as per the inclusion criteria.

Figure S2. Forest plots for the prespecified exploratory endpoints by baseline CKD stage



CI, confidence intervals; CV, cardiovascular; ESKD, end-stage kidney disease; n, number with events; N, total number.

Figure S3. Forest plots for the *post-hoc* exploratory endpoints by baseline CKD stage



CI, confidence intervals; CV, cardiovascular; ESKD, end-stage kidney disease; n, number with events; N, total number.