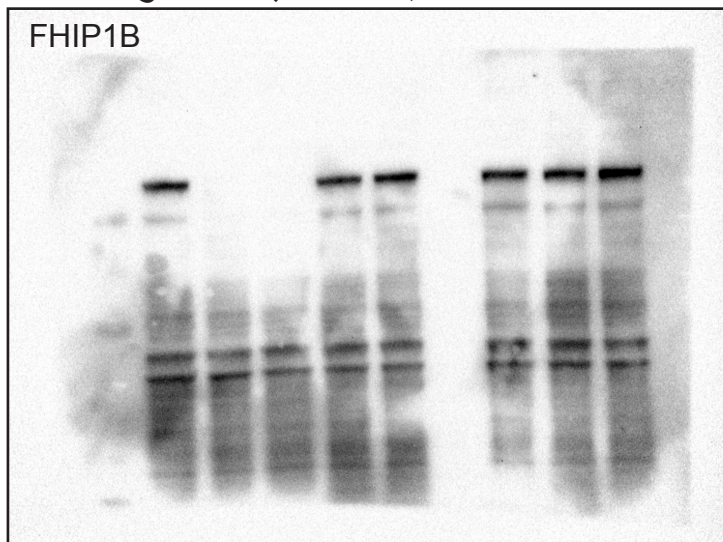
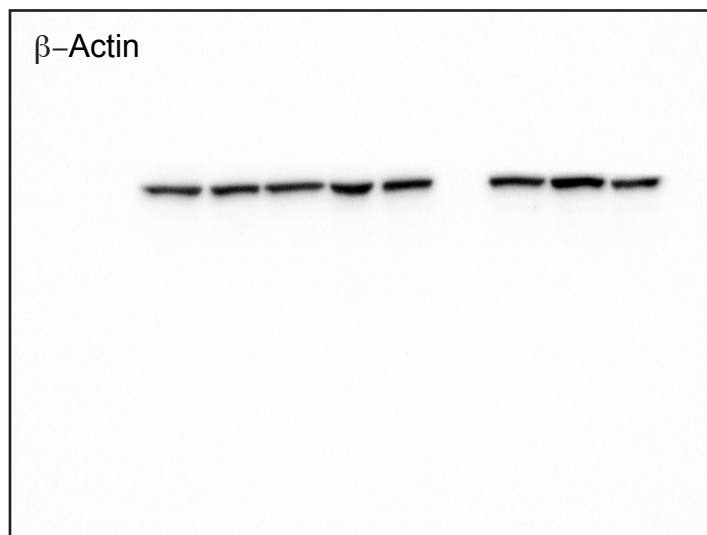


CTRL  
FHIP1B KO #1  
FHIP1B KO #2  
FHIP2A KO #1  
FHIP2A KO #2



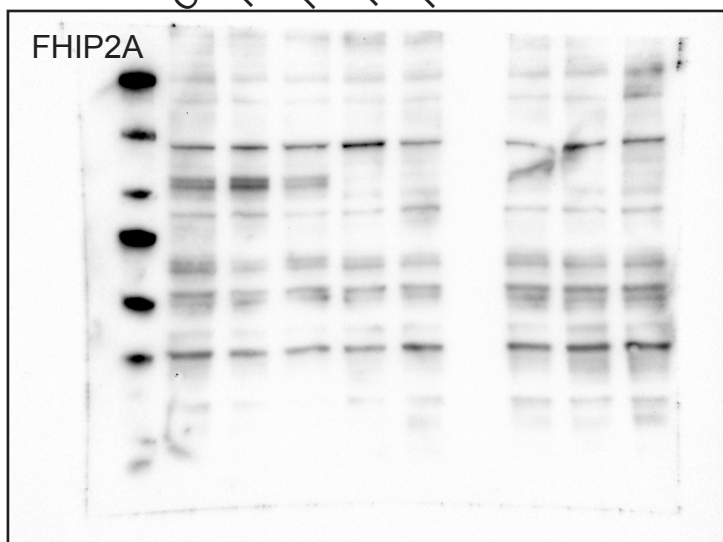
Raw image: Fig4B\_FHIP1B.scn

CTRL  
FHIP1B KO #1  
FHIP1B KO #2  
FHIP2A KO #1  
FHIP2A KO #2



Raw image: Fig4B\_Actin.scn

CTRL  
FHIP1B KO #1  
FHIP1B KO #2  
FHIP2A KO #1  
FHIP2A KO #2



Raw image: Fig4B\_FHIP2A.scn