

Supplemental Table 1. Baseline characteristics by study arm

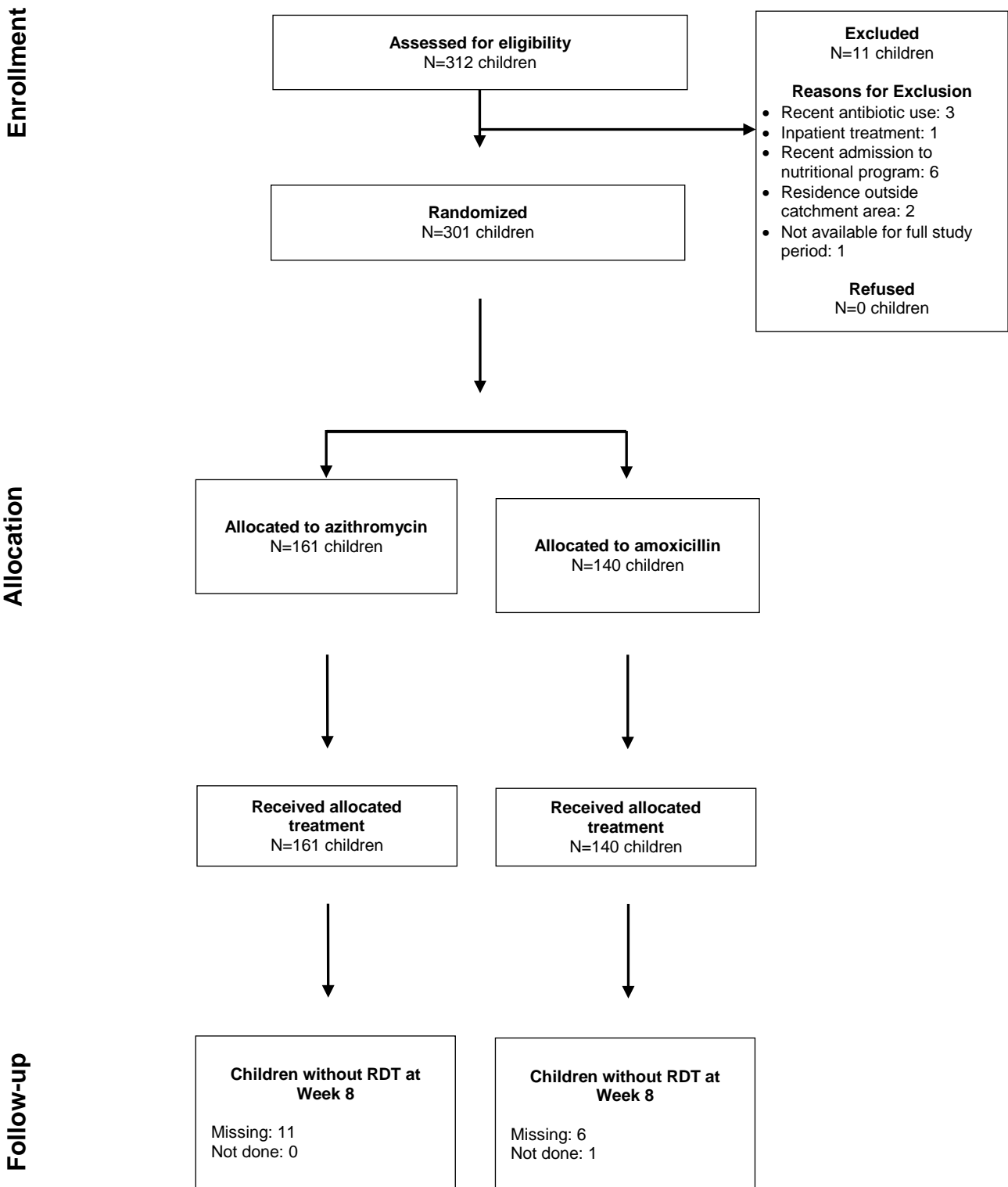
	Azithromycin	Amoxicillin
N	161	140
Age, months, mean (SD)	16.9 (8.4)	16.5 (8.2)
Female sex, N (%)	92 (57.1%)	77 (55.0%)
Weight-for-height Z-score		
Mean (SD)	-3.0 (1.1)	-3.1 (1.0)
WHZ<-3, N (%)	84 (52.2%)	80 (57.1%)
Mid-upper arm circumference		
Mean (SD)	11.2 (0.4)	11.2 (0.5)
MUAC<115 mm, N (%)	136 (84.5%)	107 (76.4%)
Weight-for-age Z-score		
Mean (SD)	-3.4 (1.0)	-3.5 (1.1)
WAZ<-3, N (%)	115 (71.4%)	96 (68.6%)
Height-for-age Z-score		
Mean (SD)	-2.4 (1.5)	-2.5 (1.6)
HAZ<-3, N (%)	55 (34.2%)	58 (41.4%)
Hemoglobin (N=164)		
Mean (SD)	8.7 (1.5)	8.8 (1.6)
<11.0 g/dl, N (%)	81 (94.2%)	71 (91.0%)
Positive rapid diagnostic test for malaria, N (%)	19 (11.8%)	17 (12.1%)
Tympanic temperature >37.5°C	6 (3.7%)	12 (8.6%)

Supplementary Table 2. Malaria outcomes at 8 weeks by study arm among children with a negative baseline malaria rapid diagnostic test (N=250)

	Azithromycin (N=134)	Amoxicillin (N=117)	Odds Ratio or Mean Difference (95% CI)	<i>P</i> -value
Positive rapid diagnostic test for malaria	12 (9.0%)	15 (12.9%)	0.66 (0.29 to 1.48)	0.32
Fever (tympanic temperature >37.5°C)	7 (5.2%)	5 (4.3%)	1.23 (0.38 to 4.27)	0.73
Positive RDT plus fever (>37.5°C)	6 (4.5%)	4 (3.4%)	1.32 (0.37 to 5.29)	0.67
Hemoglobin, g/dl ¹	9.2 (1.1)	9.3 (1.5)	-0.07 (-0.5 to 0.3)	0.71
Anemia (<11.0 g/dl) ¹	85 (93.4%)	68 (87.2%)	2.08 (0.74 to 6.39)	0.18

¹In subset with hemoglobin measurements (N=169)

Supplemental Figure 1. CONSORT flow diagram



Analysis

