

Supplemental Figures

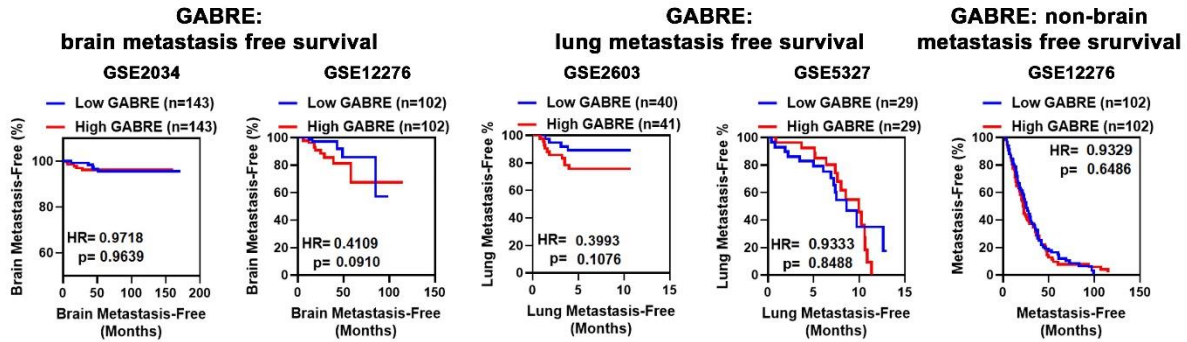


Figure S1. GABRE expression does not correlate with metastasis development in breast cancer patients. High and low expression of GABRE was categorized based on median expression for Kaplan-Meier metastasis-free survival analysis to the brain, lungs or to sites other than the brain for GSE2034 (Affymetrix Human Genome U133A Array log₂ expression from primary tumours of 286 lymph node negative breast cancer patients); GSE12276 (Affymetrix Human Genome U133 Plus 2.0 Array log₂ expression of 204 primary breast tumours from patients all of whom experienced local or distant relapse), GSE2603 (Affymetrix Human Genome U133A Array log₂ expression from primary tumours of 81 breast cancer patients), and GSE5327 (Affymetrix Human Genome U133A Array log₂ expression from 48 primary ER- breast tumours). HR = hazard ratio, p value calculated by log-rank test.