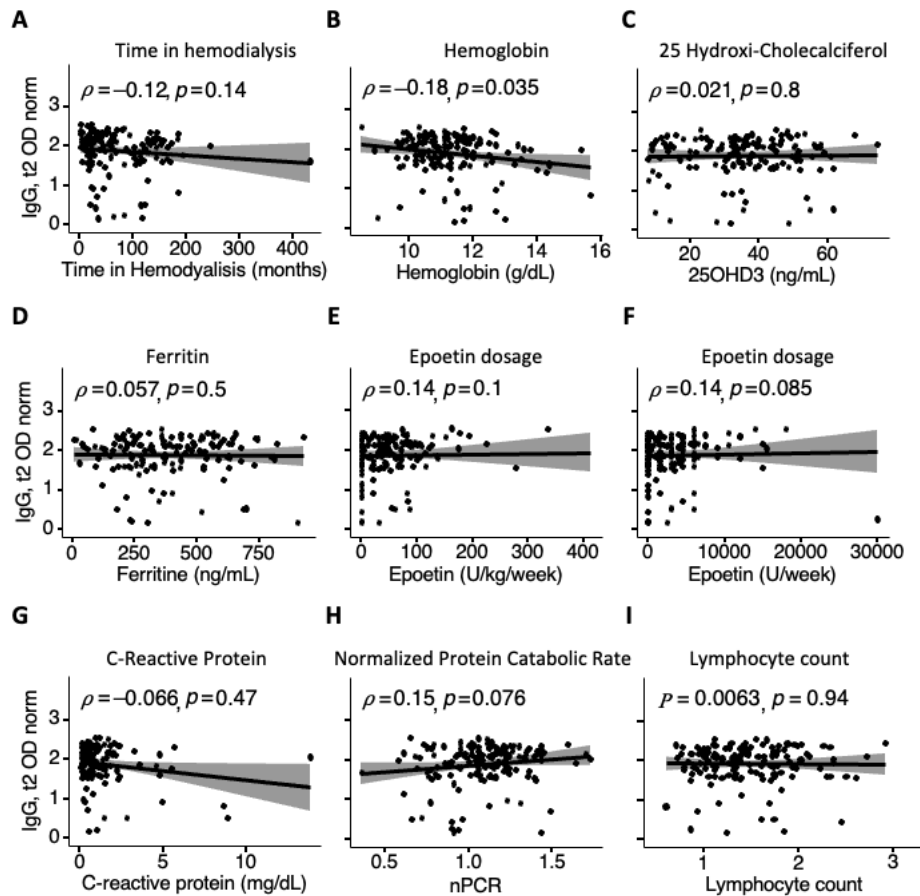


## Supplementary Figure S1



**Supplementary Figure S1.** Spearman rank correlation coefficient analysis of anti-Spike IgG at t2 with relevant pathology indicators (n=142). Correlation with time in hemodialysis (A); with Hemoglobin levels (B); with 25 hydroxi-cholecalciferol (C); with Ferritin (D); with Epoetin/Kg (E) and Epoetin/U per week (F); with C-reactive protein (G); with normalized Protein Catabolic Rate (nPCR) (H); and with peripheral blood lymphocyte count ( $\times 10^9/L$ ) (I). In panel (I) 2 outliers were excluded for abnormally high counts (9 and  $50 \times 10^9/L$ ), both from patients diagnosed with leukemia.