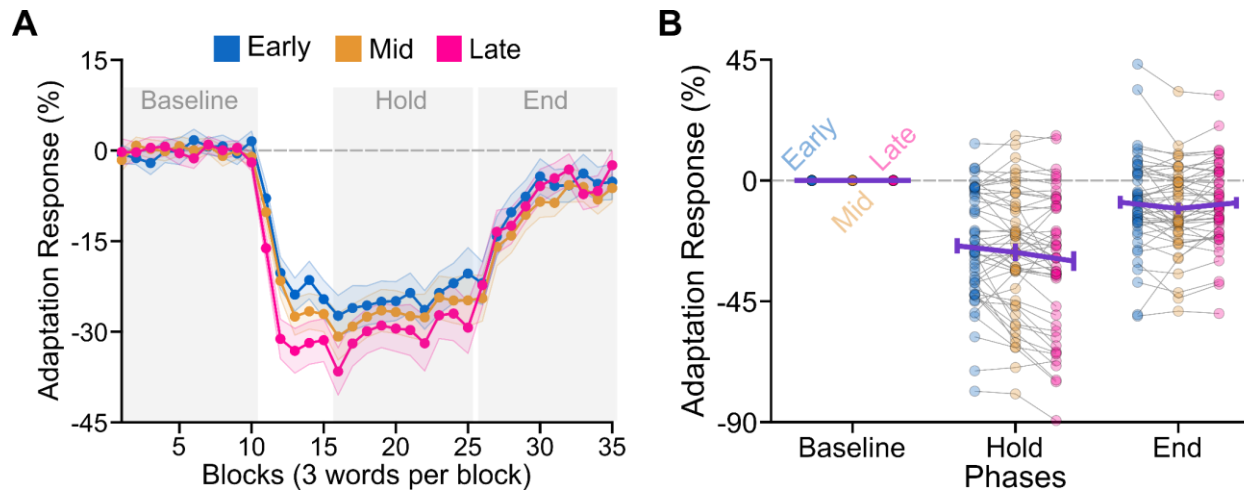


**Supplemental Material S1.** Adaptation responses in early, mid, and late time-windows.



We extracted adaptive responses from an early time window (0–80 ms), a mid time-window (110–190 ms), and a late time window (220–300 ms). The early and late time-windows were most suited to test our hypotheses; however, we included the results for the mid time-window for consistency purposes. Panel A shows the group-average trajectories of the adaptation responses calculated from the early, mid, and late time-windows. Panel B shows the individual data in the three time-windows.