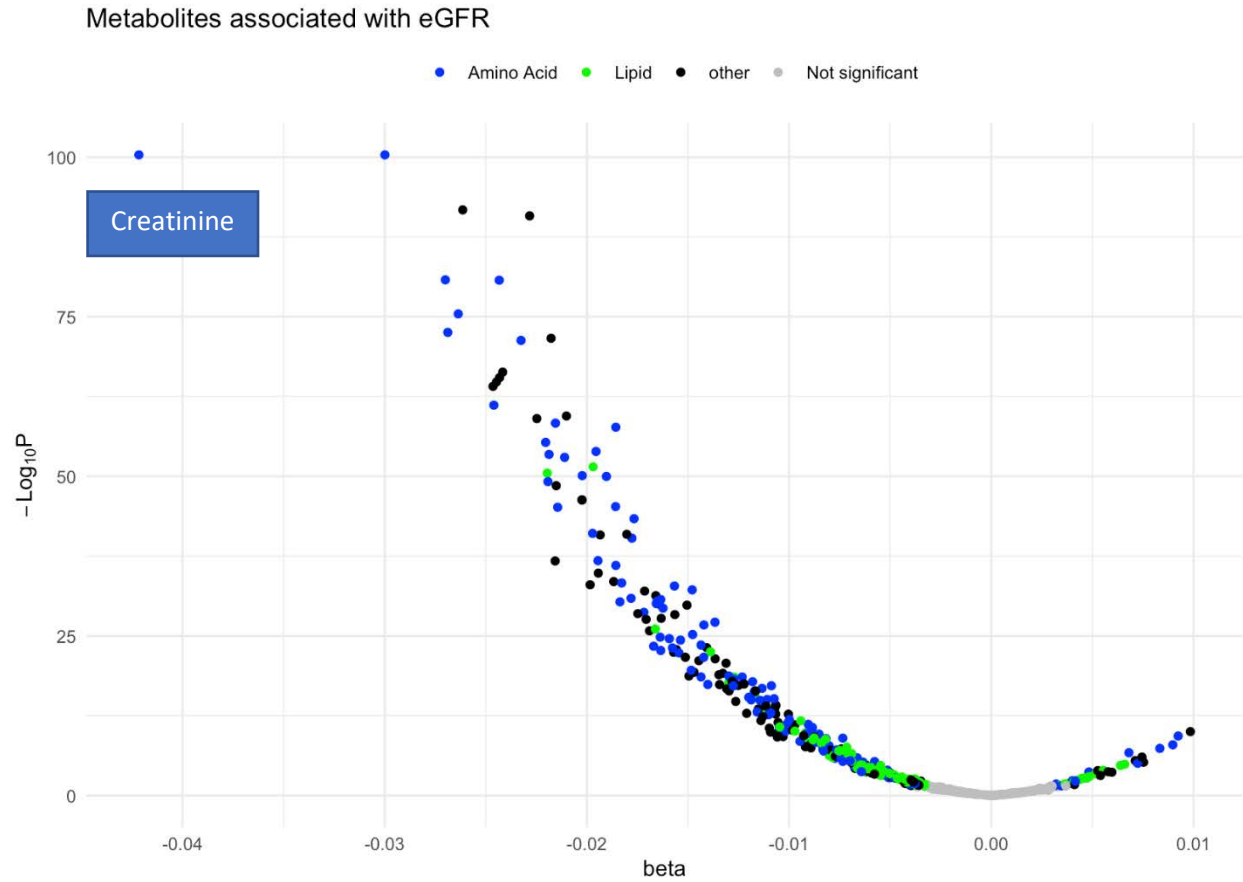
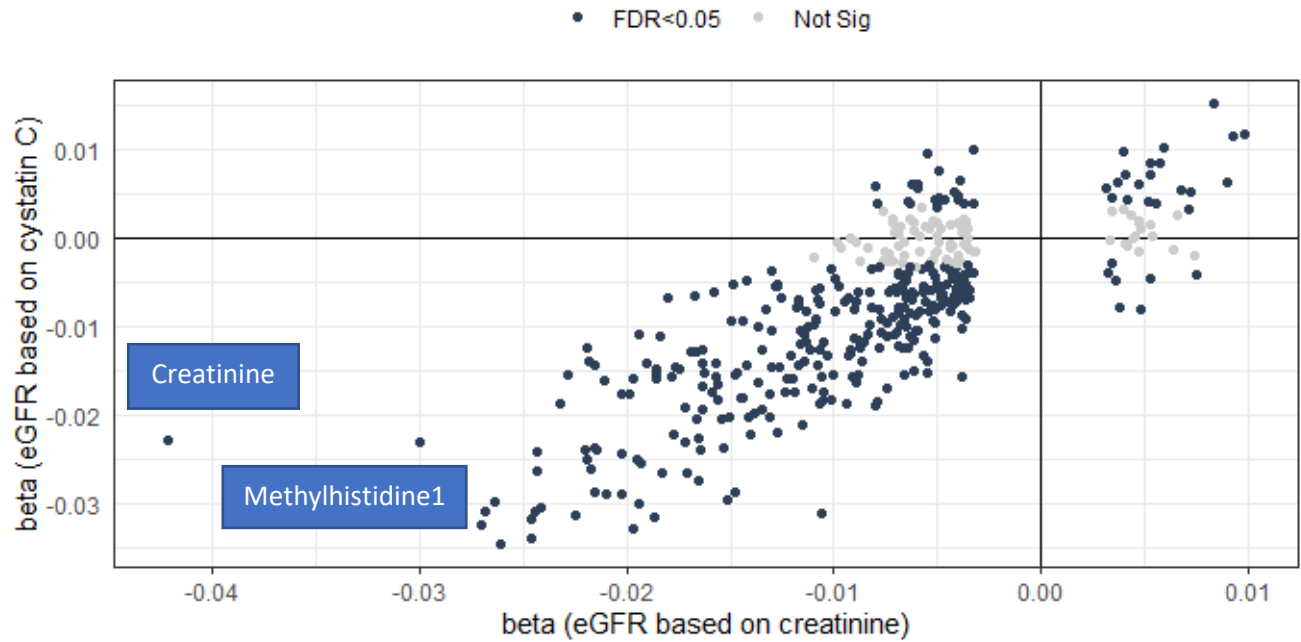


## Supplementary Figures

**Figure S1.** Volcano plot showing the association of metabolites with eGFR in models adjusted for age, gender, center and Hispanic Background (n=640 metabolites).

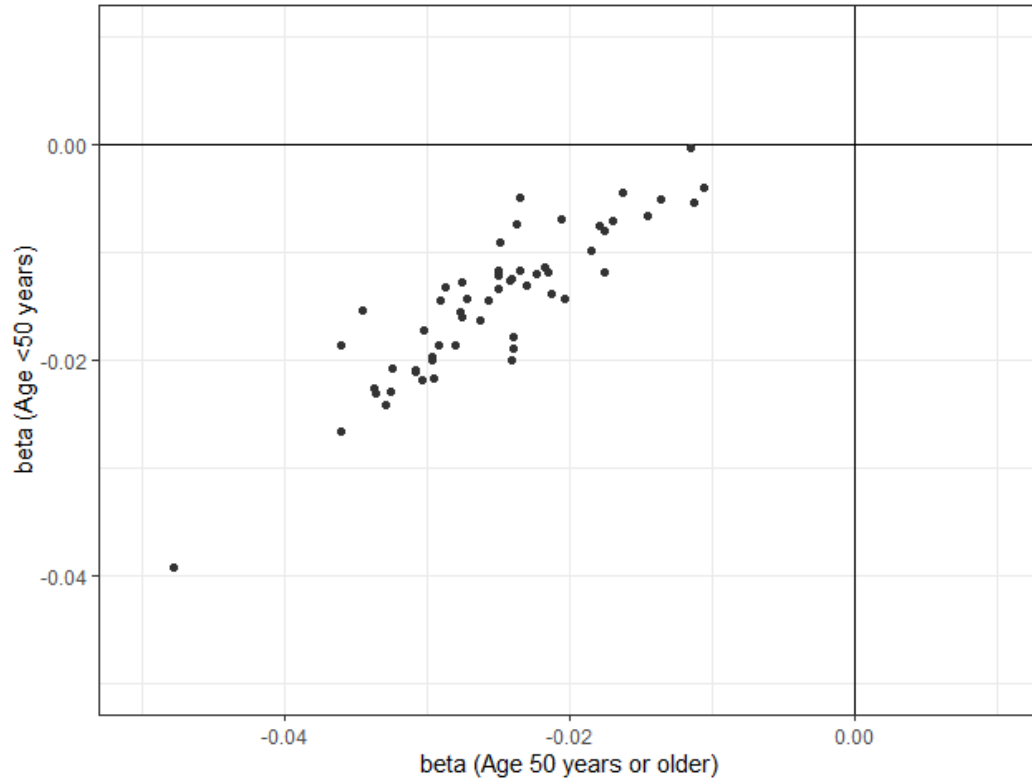


**Figure S2.** Comparison of betas of associations with metabolites when using eGFR based on serum creatinine and eGFR based on cystatin C. In grey, metabolites not significant in models using eGFR<sub>cys</sub>. Note the larger negative effect estimates for the association of creatinine and N-acetyl-1-methylhistidine (Methylhistidine1) in models using eGFR based on serum creatinine compared to models using eGFR based on cystatin C.

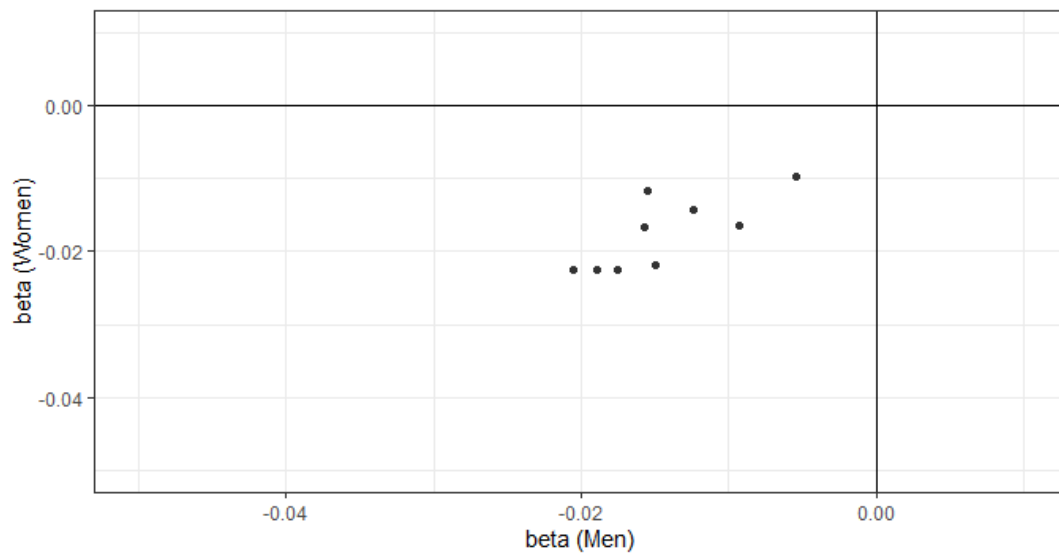


**Figure S3.** Comparison of betas across strata of lifestyle and clinical risk factors. For each metabolite results, see Tables S4-S9.

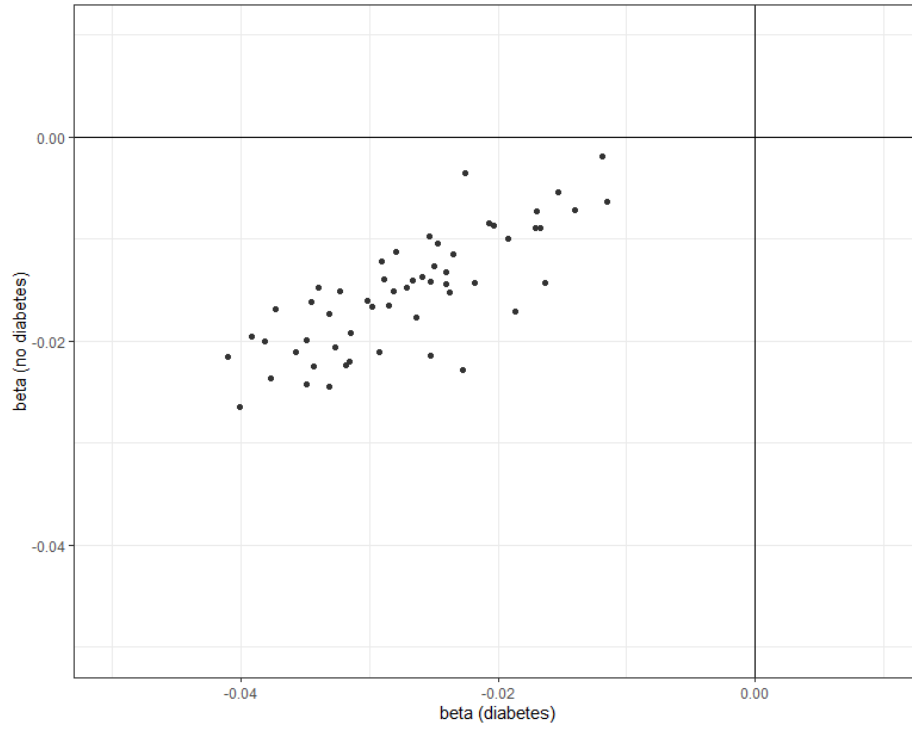
**a. Metabolites with age interaction**



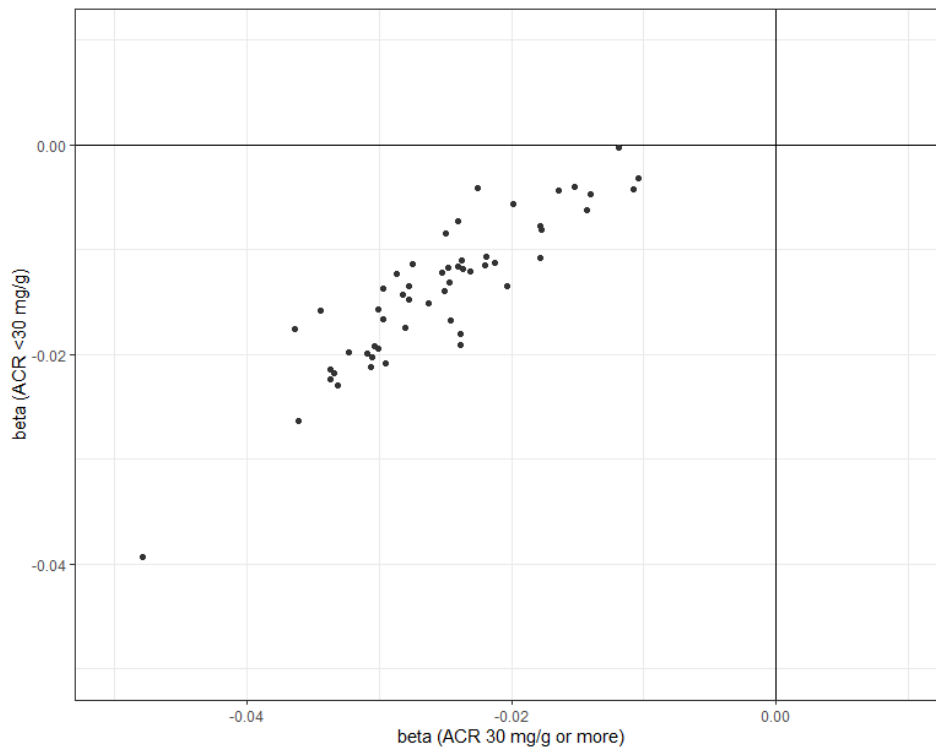
**b. Metabolites with gender interaction**



**c. Metabolites with diabetes interaction**



**d. Metabolites with ACR interaction**



**e. Metabolites with Hispanic/Latino background interaction**

